

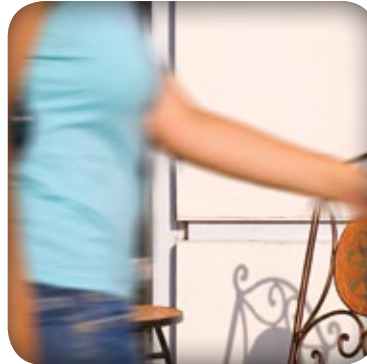
save



make



take



love

the **EveryDay** line

**JANOME**

[www.janome.com](http://www.janome.com)

Four value-priced machines with the power and precision to sew...

EveryWay.  
EveryDay.



## DC 2010

- Top loading bobbin with see-thru window
- Automatic thread tension control
- 1-step sensor type buttonhole
- Variable speed control
- Computerized control
- Memorized needle up/down setting
- Easy reverse stitch button
- Built-in needle threader
- Extra high presser foot
- Drop feed dog lever
- Maximum zigzag width: 7mm
- Maximum stitch length: 5mm
- 50 stitches including: stretch, quilting, appliqué, garment and utility
- Lock stitch button

## Sewist 500

- Auto declutch bobbin winder
- Built-in needle threader
- Top loading bobbin with see-thru window
- Automatic 1-step buttonhole
- Convertible free arm
- 1-hand thread cutter
- Easy snap-on presser feet
- Reverse stitch lever
- Drop feed dog
- Foot pressure adjustment
- Accessory storage
- 25 stretch & utility stitches

## Jem Gold 3

- Auto declutch bobbin winder
- 4-step built-in buttonhole
- 1-hand thread cutter
- Easy snap-on presser feet
- Reverse stitch lever
- Top loading bobbin with see-thru window
- 10 stitches
- Built-in needle threader
- Just 12 pounds
- PLUS FREE QUILTING KIT INCLUDING**
- Open toe even feed foot
- Open toe, see-thru craft foot
- Quilting guide
- Cloth guide
- Open toe darning foot
- 1/4" seam foot

## 3128

- Auto declutch bobbin winder
- Lightweight: 11 lbs
- 650 stitch per minute
- 4-step built-in buttonhole
- Maximum zigzag width: 5mm
- Maximum stitch length: 4mm
- Convertible free arm
- Reverse stitch lever
- Easy lay-in threading
- 8 stretch & utility stitches
- FREE Foot:**
- 1/4" seam foot included

\$60  
Retail  
Value!

© 2009 Janome America, Inc.

# JANOME

www.janome.com