



Decorative Jacket

Sew this decorative jacket with wonderful details along the neckline, front and pockets. Use Burda pattern 7634 as a basic pattern. We used View B and made a few changes in the pattern. Follow the step-by-step instructions below.

Sewing supplies

SMARTER BY PFAFF® C1100 Pro Sewing Machine
Robison Anton 40 wt. Rayon Embroidery Thread
Sewing thread to match your fabric
INSPIRA™ Twin needle 1.6mm size 80, 6200737-96
INSPIRA™ Tear Away Stabilizer

SMARTER BY PFAFF™ Accessories

Piping Foot 820532-096

Fabric and notions:

Light-colored linen for the jacket (see pattern)
Turquoise Thai-silk for the neckline 4" (10cm).
Embroidered silk for front, 4" (10cm).
Satin for the welt piping, 19.5" (50cm).
Cotton cord; 3mm diameter to use for piping, long enough for neck, front and sleeves.

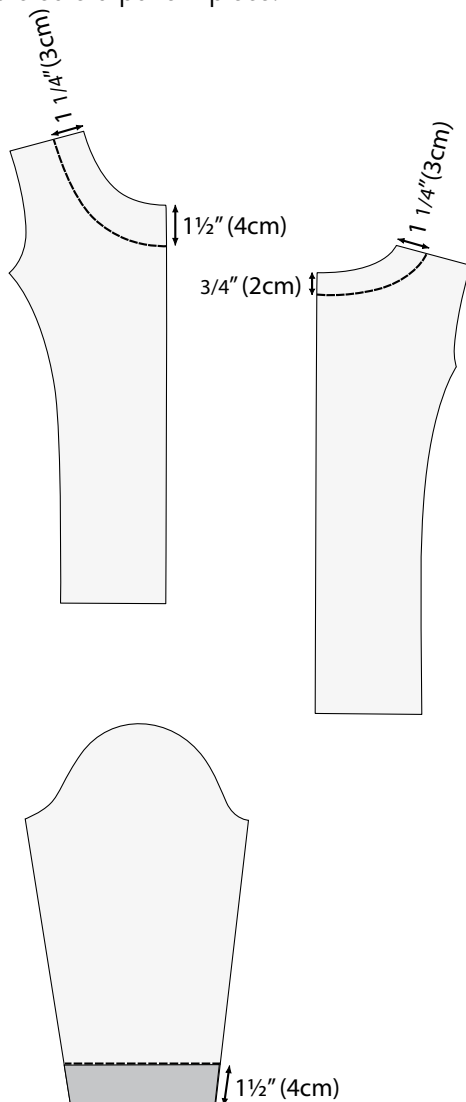
For more information regarding accessories please visit www.smarterbypfaff.com.

Preparation

- Trace the pattern in your size and cut.

Alter the front and back pieces:

- Measure from the neckline on the front piece $1\frac{1}{2}$ " (4cm) and $1\frac{1}{4}$ " (3 cm) at the shoulder line.
- Measure from the neckline on the back piece $\frac{3}{4}$ " (2 cm) and $1\frac{1}{4}$ " (3 cm) at the shoulder line.
- Draw a smooth line so the marking matches. Trace the new pattern pieces. Cut.
- Trace the center front of the front piece and measure $1\frac{1}{4}$ " (3cm) wide pattern piece.
- Draw a new pattern piece, same as the grey marked area of the sleeve below
- Measure 4" x 1" (10x 2 cm) for the pocket flap to create a pattern piece.



Cut

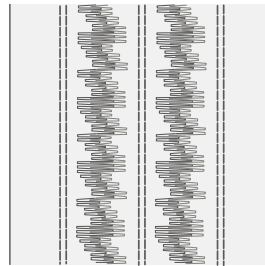
- Cut the fabric for your jacket base in white linen according to the pattern.

Cut the lining

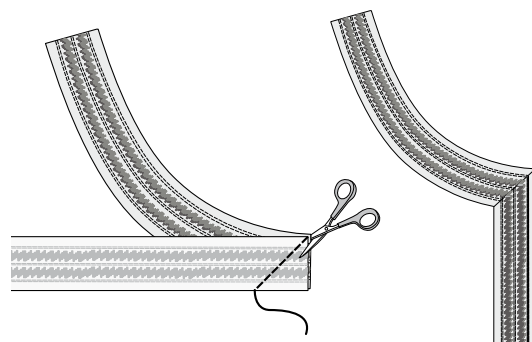
- Cut neck, sleeve and pocket edges in turquoise Thai-silk.
- Cut front edge in embroidered silk.
- Iron fusible interfacing to the wrong side of the front pieces, neck, sleeve, pocket and front edges.

Assembly instructions

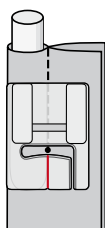
- Press the twin needle button on your sewing machine and change to the Inspira twin needle 1.6mm size 80.
- Thread your sewing machine with embroidery thread in two matching colors on top and bobbin thread in the bobbin.
- Test sew different stitches on a scrap piece. Use the Inspira Tear-A-way stabiliser and use the DFS™ (Dual Feed System) on your SMARTER BY PFAFF® C1100 Pro sewing machine. We have used stitch B 66 and combined that with a straight stitch. Once you have decided what stitch to use, decorate the neck, sleeve and pocket pieces to your liking.



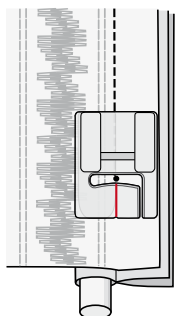
- Decorate the front edge with three lines of twin needle straight stitches. Press.
- Place the neck and front edge wrong sides together and stitch a straight stitch at a 45 degree angle.



6. Place the two neck/front edges right sides together. Pin and stitch a straight stitch at the center back. Press.
7. Measure along the neck/front edge, sleeve edge and pocket edge for the piping. Cut satin duchess fabrics on the bias 2" wide(5cm) and the length you measured, to cover the cotton cord plus seam allowance. Cut cotton cord same length as the bias.
8. Use the Piping Foot 820532-096 to make the trim. Wrap the bias fabric strip around the cord.
9. Place the fabric and the piping under the groove of the foot, have the raw edges to the right.
10. Select center needle straight stitch and stitch length 3.

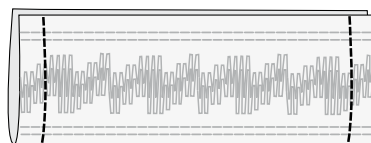


11. Stitch to cover the piping with the fabric.
12. Trim the seam allowance; leave ¼" (6mm).
13. Place the covered piping on the right side of the fabric along the seam line. Place it under the Piping Foot.

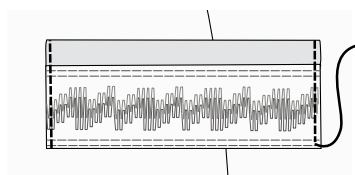


14. Sew the piping to the neck/front edge along the side that attaches to the front piece.
15. Sew the piping to the sleeve edge that attaches to the sleeve piece.
16. Sew the piping to the top of the pocket.
17. Trim the seam allowance of the piping at curves and corners.
18. Sew the decorated sleeve edge to the sleeve. Place wrong sides together and pin. Stitch a straight stitch. Press.

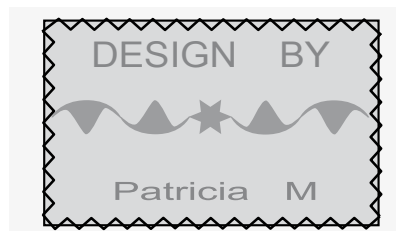
19. Finish sewing your jacket according to the pattern. Before attaching the sleeves sew the neck/front edge to the jacket. Right sides together, pin and stitch a straight stitch. Press.
20. Trim the seam allowance of the piping at curves and corners.
21. Add piping on one of the long sides of the pocket flap. Fold the pocket flap lengthwise with the right sides together.
22. Sew the short sides of the flap with a straight stitch.



23. Turn the flap to have the right side out, Press. Place the pocket flap as desired, and stitch it in place with a straight stitch.



24. To make your jacket even more special stitch a label. Program "Designed By" select a decorative stitch and your name by following the instructions in your manual.
25. Sew on a piece of fabric that matches your decorations. Make sure you have fusible interfacing on the label. Iron the label and fold the edges under. Attach it with a decorative stitch using a matching embroidery thread.



Finished!