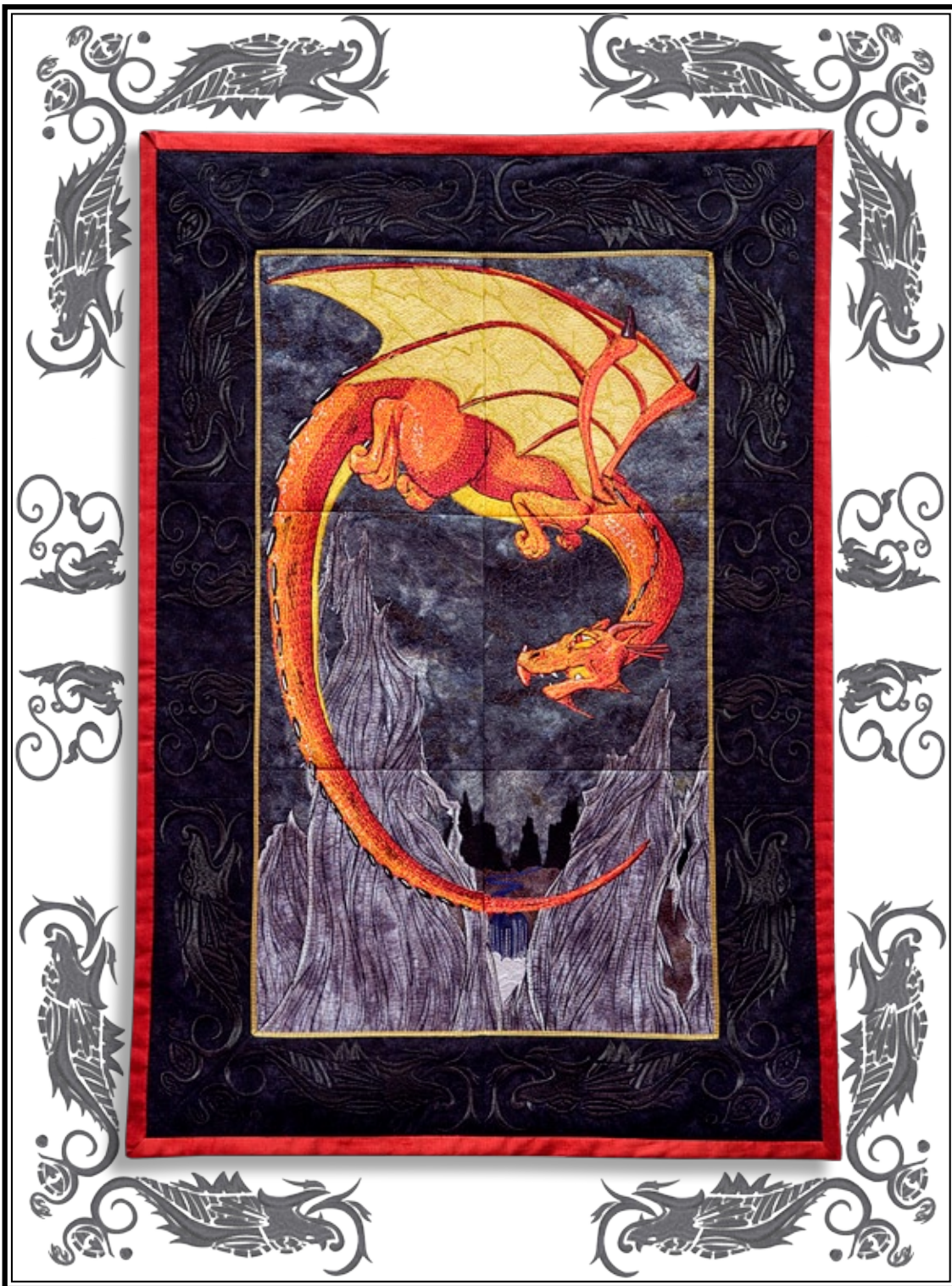




# Dragon Tile Scene

6 block Tile Scene  
in three sizes.

Full Collection



Recently, Anita Goodesign hosted an online survey and one of the questions we asked was "If you could choose the next theme for a new collection, what would it be?" There were thousands of different requests, but one that kept popping up was "realistic dragons". So, when we were discussing new ideas for upcoming releases at a company meeting it turns out that our newest artist loves dragons and immediately threw herself into this project. She created a fantastic painting of a dragon flying over a mountainous valley at night and needless to say, we were all quite impressed with her effort! Linda and I decided on batik fabrics for the project because they made a beautiful background sky effect with the mottled and tie-dyed colorations of grey and black. Then it came time to do the digitizing. I decided to stipple the whole background with three different layers of thread. This creates stability for the fabric as well as a great shimmering sky when using metallic thread. When digitizing the dragon, I began with a base fabric piqué. This keeps the stitch count down and gives the dragon a deep, saturated color base. Now, all of the additional hand done layers of colors for shading and scales will really pop! I used another piece of stone colored batik as appliqué base for the mountain and even more hand worked, free form stitches to texturize it with layers of color. The end result of all this work is stunning! It is not often that I get to create a really awesome piece of embroidery art! You will surely feel the same when you embroider it for yourself!

Reference back of page to view this design collection or visit our website at [www.anita-goodesign.com](http://www.anita-goodesign.com)

Anita Goodesign



# Dragon Tile Scene

6 Block Tile Scene in three sizes.

Designs with the letter "A" at the end are the large designs. You will need a hoop capable of embroidering 8.0" x 9.0". Total finished size 23" wide x 35" high.

Designs with the letter "B" at the end are the medium designs for a hoop that can embroider at least 6.8" x 7.8" Total finished size 20" wide x 30" high.

Designs with the letter "C" at the end are the small designs for a hoop that can embroider at least 5.8" x 6.8". Total finished size 17" wide x 25" high.



This is also the first tile scene we have created that includes an embroidered border to frame the finished design. The border consists of ten different segments to surround the dragon as a framed work of art. We did it tone on tone to simulate a carved effect when viewed from a distance. The border designs each have an outline/framing stitch so they are easy to piece together. We even included the framing stitches for the mitered corners!



10 optional border design elements (HDDR7 - HDDR16) in three sizes to use as a beautiful tonal border as seen in our sample project. Note: not all designs shown here.

Anita Goodesign

visit our website at [www.anita-goodesign.com](http://www.anita-goodesign.com)