

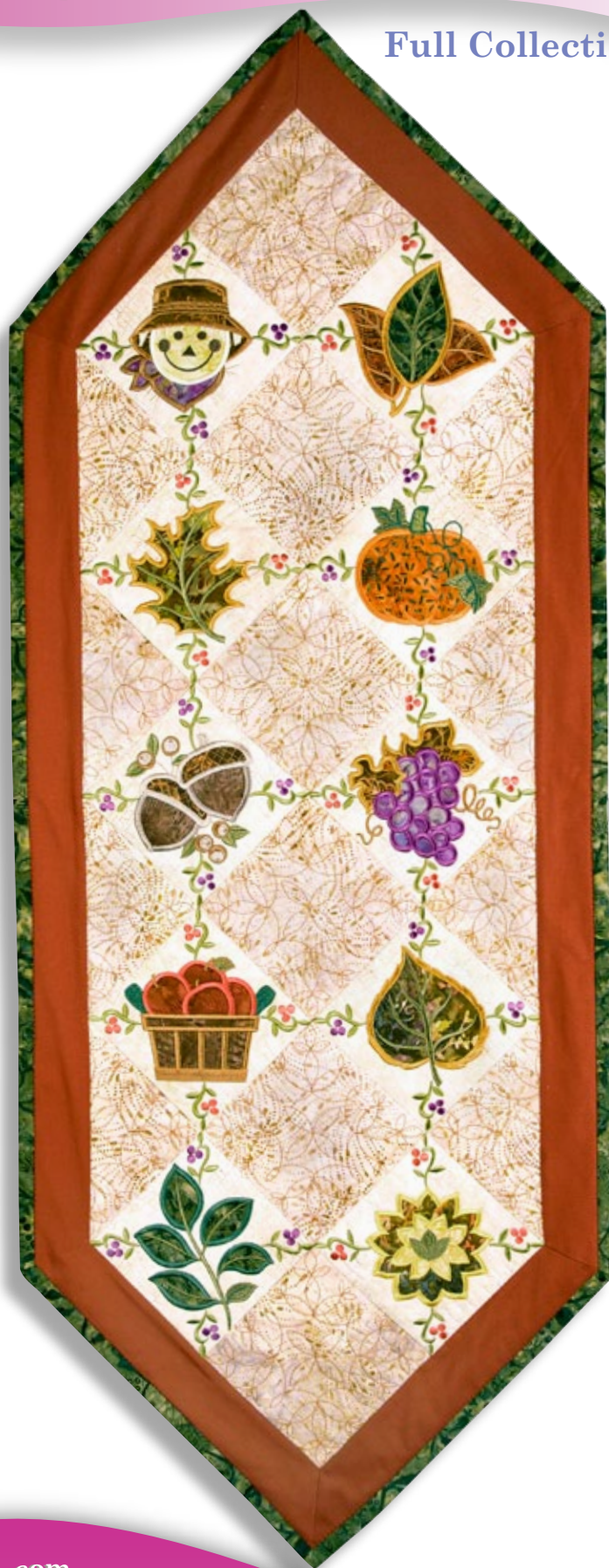


Connecting Autumn

56 Designs

Full Collection

Last year we created a collection called “Connecting Flowers” which combined beautiful applique flowers combines with quilting designs. We were inspired with that collection to bring you something new for autumn this year titled Connecting Autumn. The first part of the collection consists of connecting Autumn quilt blocks. There are 16 different designs in 2 different sizes each that include a unique squaring stitch making it much easier to create the perfect quilt. There are also 3 different running stitch blocks that you can use for checkerboard style quilts or to create the unique wall hanging that is showcased on the following pages. These designs are made to be rotated at a 45 degree angle for the finished project. We include all of the necessary pieces to make a square quilt with these designs. The second part of the collection consists of all the original designs edited and rotated so that they are straight.

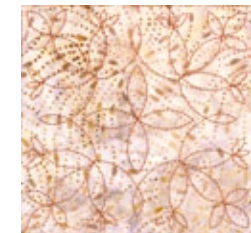
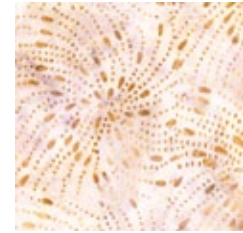


visit our website at www.anitagoodesignonline.com

Anita Goodesign™

Connecting Autumn

16 different connecting autumn designs in 2 different sizes - 5"x5" & 6"x6".



16 isolated
flowers for the
5"x 7" hoop

4 different
connecting
quilt designs



Anita Goodesign™

visit our website at www.anitagoodesignonline.com