



# Winter Scapes Tabletop Tree Skirt

This nostalgic embroidered tabletop tree skirt will be the center of attention at your holiday gatherings year after year. It features a series of proportional designs combined to create a serene winter landscape.

**Skill Level: Advanced**

*Finished diameter: approximately 28"*

**Required Software:**

- Amazing Designs® Winter Scapes Embroidery Designs CD with FREE Edit Express software for resizing, color editing, and printing templates (ADC-180)

**Supplies:**

- Embroidery machine with a 130mm x 180mm embroidery field or larger
- 1/2 yd. denim 60" wide
- 1-2/3 yd. heavy weight fusible interfacing
- 1 yd. red cotton fabric (lining and piping)
- Perfect Sew™ Spray or Best Press Starch Alternative
- Self Adhesive Tear-Away Stabilizer
- Water soluble fabric marker
- Assortment of Madeira Rayon and Metallic embroidery thread
- Fasturn®
- All purpose sewing thread
- Bamboo Pointer & Creaser

*Read all instructions before beginning.*

**INSTRUCTIONS:**

1. Stabilize the denim fabric with spray starch or a starch alternative such as Perfect Sew™ Spray or Best Press Starch Alternative.
2. Fuse interfacing to the wrong side of the denim. Interface the entire fabric to provide additional support.
3. Prepare the wedge pattern. Enlarge the half pattern pieces 137%. Cut out and tape pattern pieces together along dotted edge.
4. Position pattern on the right side of the denim. Using a water soluble fabric marker, outline six wedges; it's easier to embroider the designs on a larger piece of fabric before cutting them out.

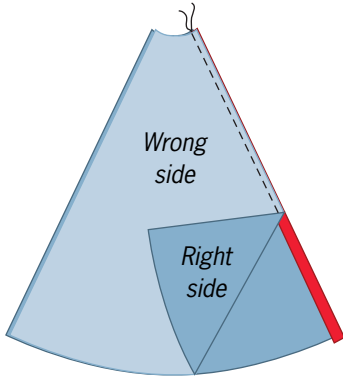


5. Use a Self Adhesive Tear-Away Stabilizer rather than hooping the fabric. Simply hoop the stabilizer release liner side up, score and peel away the release liner and adhere the fabric to the sticky area of the stabilizer.
6. Embroider wedges. All design components are pictured on the following pages. Each wedge grouping indicates the order in which the various designs making up that grouping should be stitched. In each instance, start with background designs and work toward foreground designs. Some designs are embroidered over portions of other designs.
7. Remove excess Self Adhesive Tear-Away Stabilizer according to stabilizer instructions before layering the tabletop tree skirt.

8. Assemble the tree skirt, using 1/4" seam allowances.
9. Add piping to each seam.
  - Cut three 3/4" straight grain strips parallel to one selvage on the lining fabric.
  - Press each strip in half, meeting lengthwise edges, wrong sides together, to form piping.



- Place piping on right side of one wedge, along side edge, meeting cut edges.
- Meet a second wedge to the first wedge, right sides together, meeting cut edges.
- Stitch, joining the two wedges, with piping sandwiched in between.

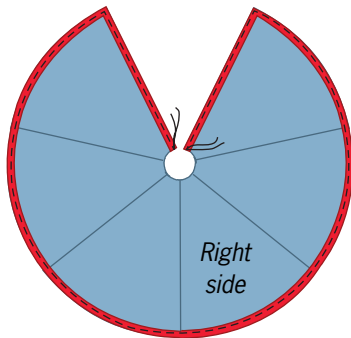


*Lining, piping and ties cutting guide on 36" x 45" cut of fabric*

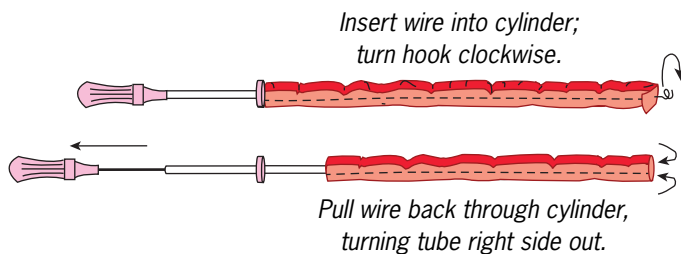
- Press seam flat, then to one side.
- Repeat until all wedges have been joined.

10. Place tree skirt, right side down, on one edge of the lining. Cut lining using the denim skirt as the pattern.
11. Add piping to outer edges of tree skirt.

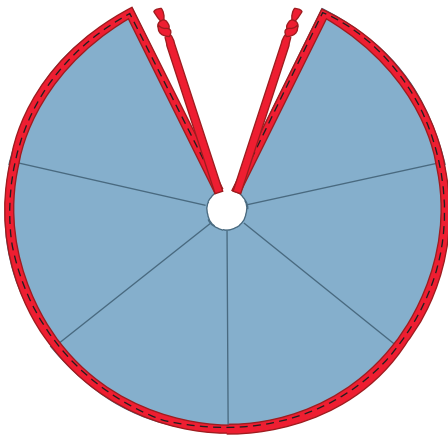
- From remaining lining fabric, cut 3/4" bias strips. Seam strips to form one continuous strip approximately 105" long.
- Press bias in half, wrong sides together meeting lengthwise edges.
- Baste piping to right side of tree skirt outer edges as shown. Do not add piping to inner center circle of tree skirt.



12. Add ties to inner edge.
  - Cut two 1" x 15" straight strips from the lining fabric.
  - Meet lengthwise edges, right side together; stitch a 1/4" seam, creating a tube.
  - Turn tube right side out using Fasturn®. Knot one end of each tube.

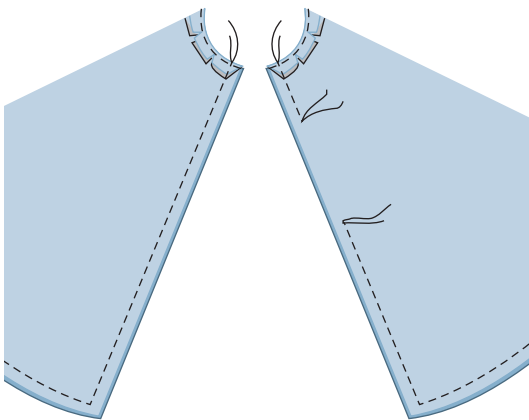


- Position ties at upper edges of the tree skirt. Pin or baste in place.

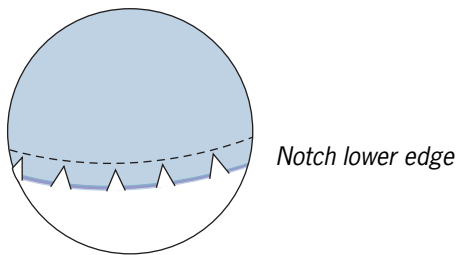


13. Join lining to tree skirt.

- Meet lining to tree skirt, right sides together. Keep loose ends of ties free from the stitching line. Stitch along center curved edge, sewing from cut edge to cut edge. Clip curve.
- Press seam flat; then wrap seam toward the inside of the tree skirt, folding along the stitching line.
- Stitch the adjoining straight edge of the skirt, beginning at the folded edge, continuing around the lower edge of the skirt, and leaving an opening on the final edge for turning. Press seam.



- Notch outer edge; angle-cut corners. Press tree skirt flat.




14. Turn skirt right side out, using the Bamboo Pointer & Creaser to smooth the edges. Press edges and hand stitch opening closed.

For other exciting projects like this one, visit our website at [www.AmazingDesigns.com](http://www.AmazingDesigns.com)


## Design Layout and Modifications


The guides on this and following pages indicate which designs were used, where those designs were placed on the tabletop tree skirt, and how the designs were modified (resized, rotated, mirror imaged, and thread colors modified from those indicated with the designs), as well as the design stitching order. If thread colors are not listed, use the colors specified in the color chart included on the CD.


 = Degrees to rotate left

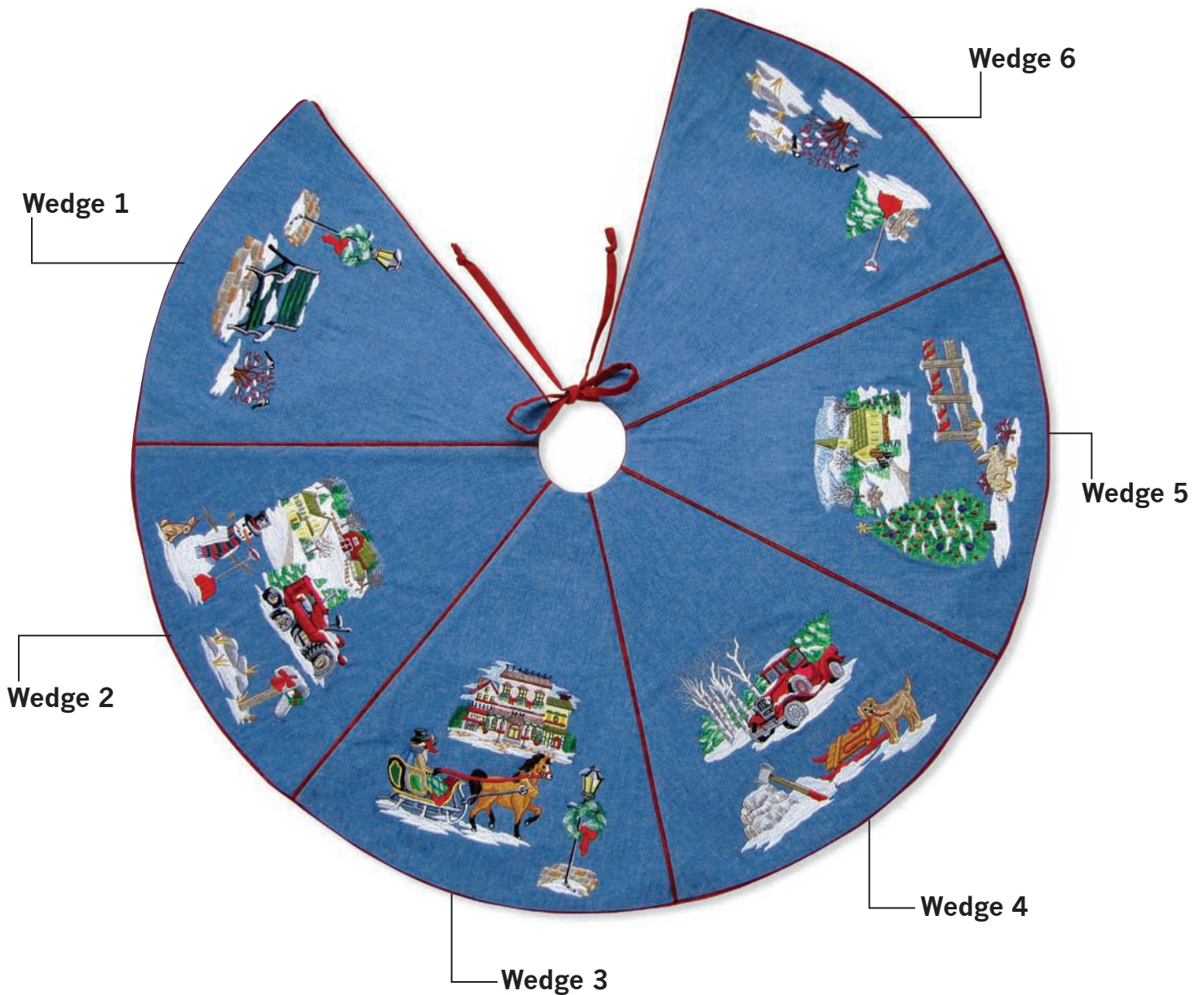
 = Mirror image horizontally

$\%$  = Percentage to resize design

 = Degrees to rotate right

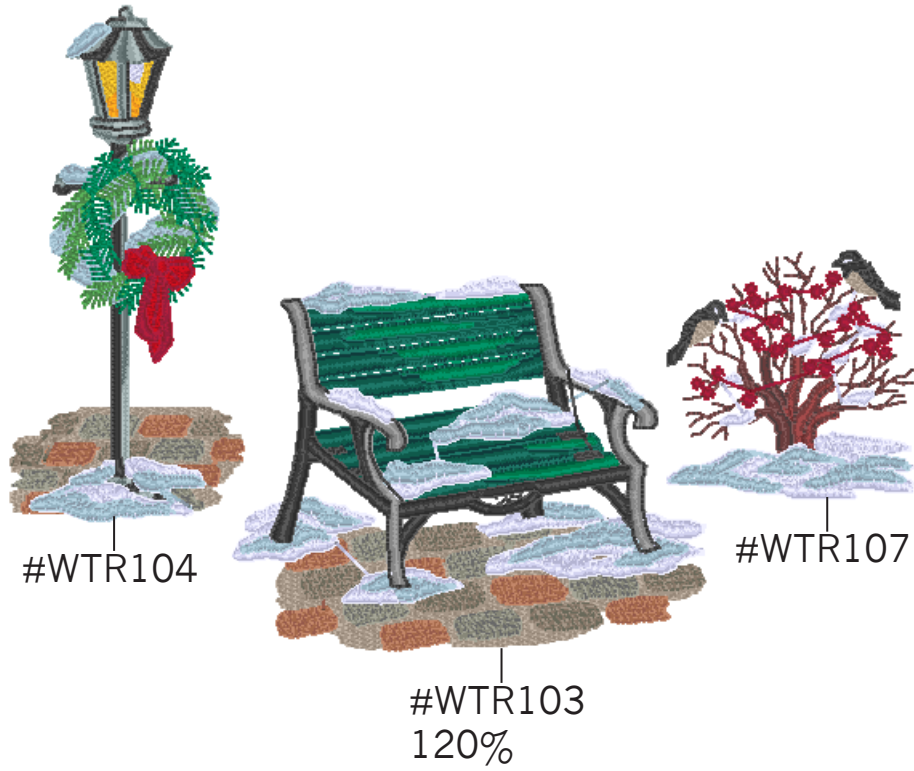
 = Mirror image vertically

 = Modified thread color



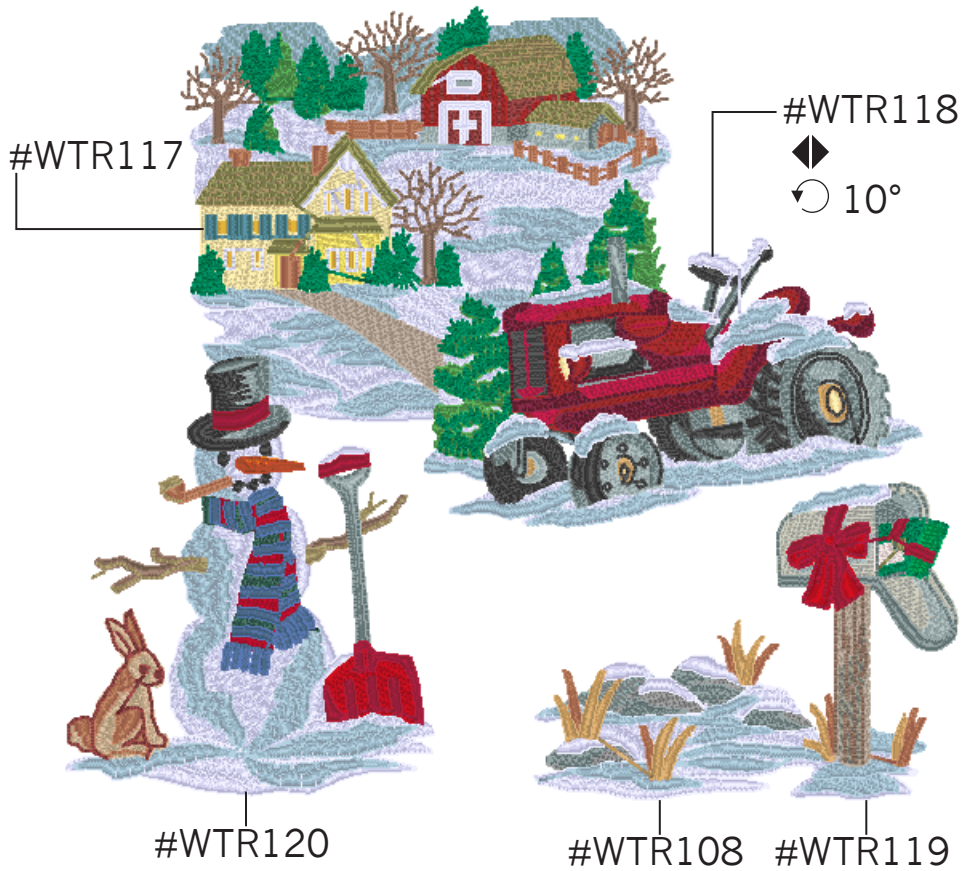
## Wedge 1

Design  
Stitching  
Order  
#WTR103  
#WTR104  
#WTR107



## Wedge 2

Design  
Stitching  
Order  
#WTR117  
#WTR118  
#WTR120  
#WTR108  
#WTR119



### Wedge 3

Design  
Stitching  
Order  
#WTR102  
#WTR101  
#WTR104



### Wedge 4

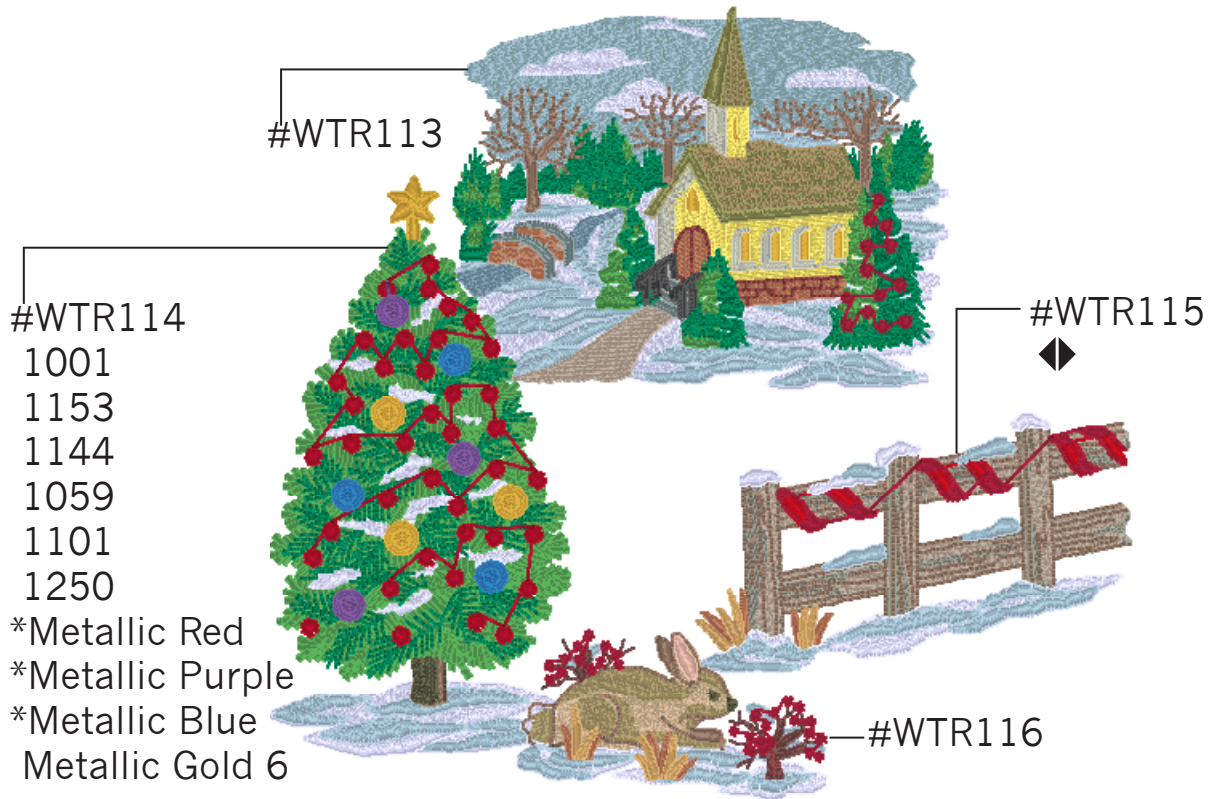
Design  
Stitching  
Order  
#WTR109  
#WTR110  
#WTR111  
#WTR112



# Wedge 5

Design  
Stitching  
Order

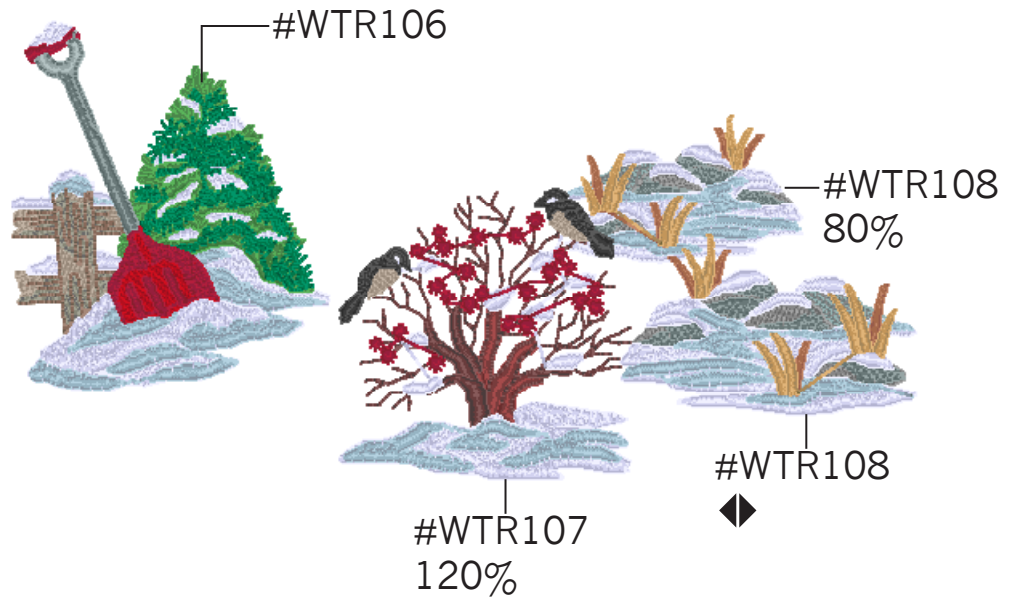
- #WTR113
- #WTR114
- #WTR115
- #WTR116

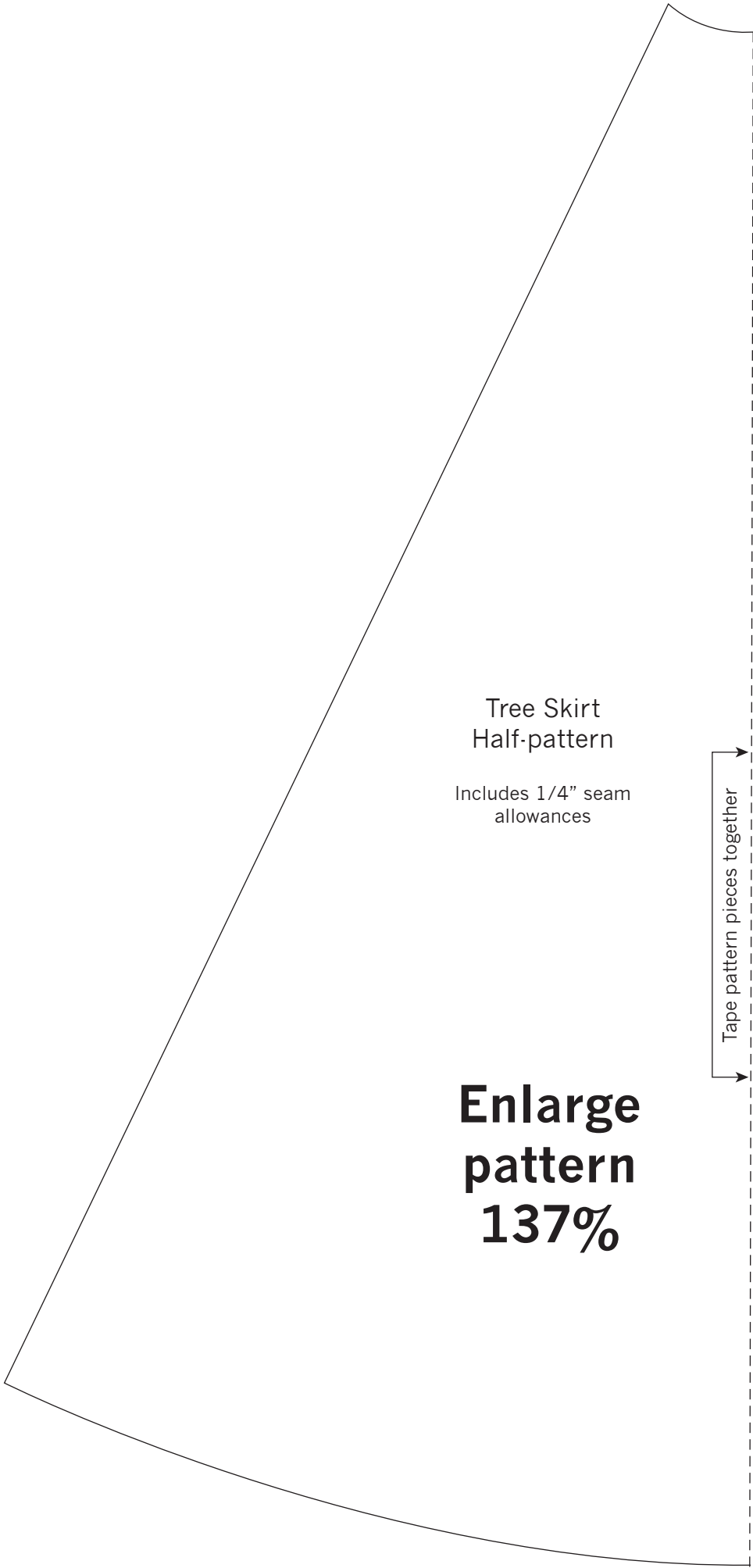


# Wedge 6

Design  
Stitching  
Order

- #WTR106
- #WTR108
- #WTR108
- #WTR107





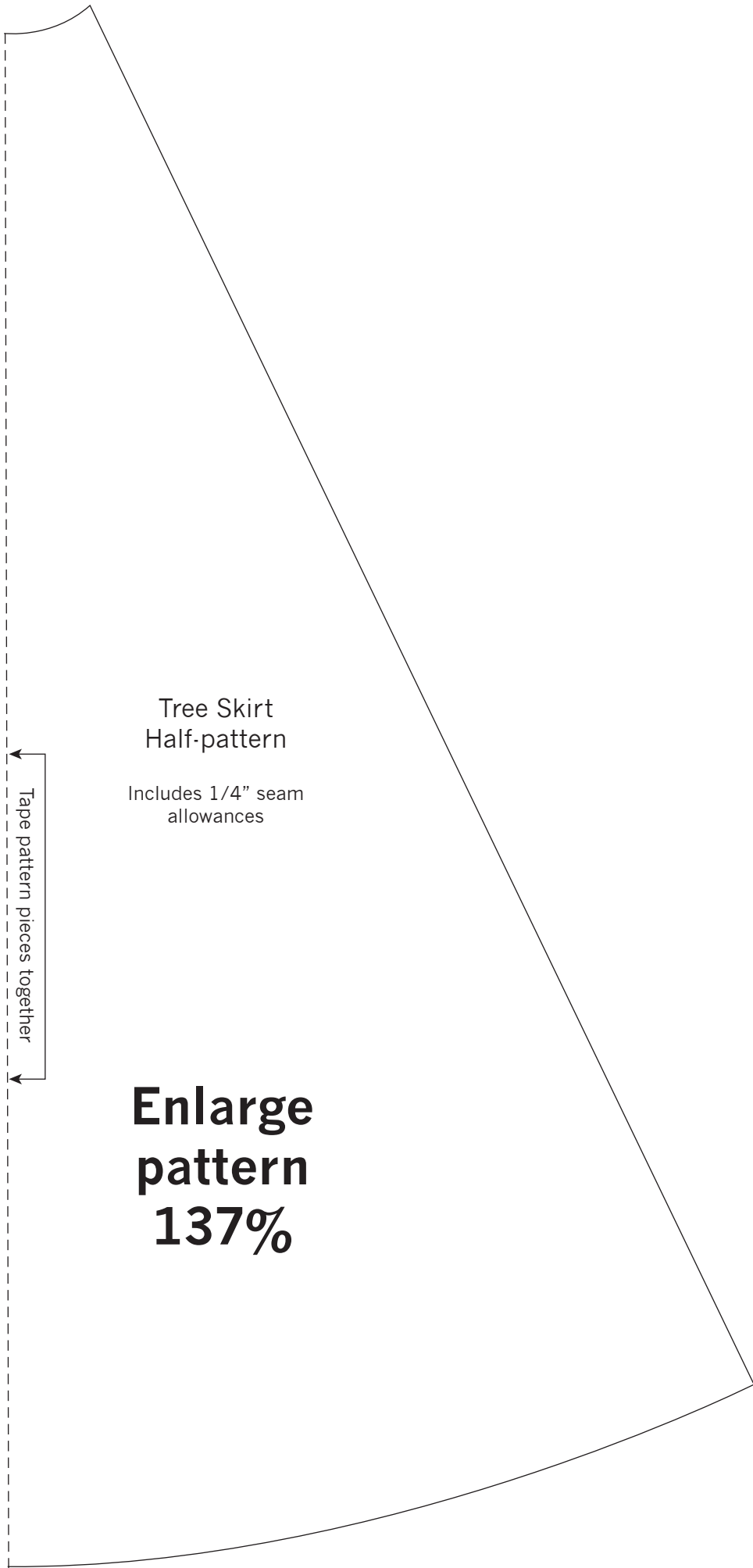
Tree Skirt  
Half-pattern

Includes 1/4" seam  
allowances

**Enlarge  
pattern  
137%**

Tape pattern pieces together





Tree Skirt  
Half-pattern

Includes 1/4" seam  
allowances

Tape pattern pieces together

**Enlarge  
pattern  
137%**