

# creative™ 4.0 Bag



## Sewing Supplies

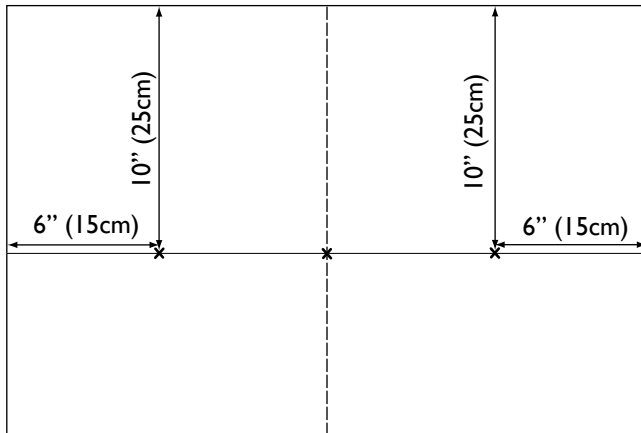
- PFAFF® creative™ 4.0 Sewing and Embroidery Machine
- ½ yd x 55" (50 x 140 cm) Linen fabric
- 8" x 55" (20 x 140 cm) lining
- ¾ yd x 55" (35 x 140 cm) heavy fusible interfacing
- Sewing thread to match the fabric
- Sulky Rayon Embroidery thread 30 weight, white and grey
- Bobbin thread
- Tear away stabilizer
- Two handles to sew on
- Separating Zipper 12" (30 cm)
- Rotary cutter, ruler and mat
- Water soluble marker

## PFAFF® Accessories

- Bi-Level Top Stitch Foot with (IDT™ compatible) 820676-096
- Zipper Foot 820248-096
- Narrow Edge Foot 820609-096
- Sewing Star Foot (IDT™ compatible) 820654-096
- creative™ MASTER HOOP (240 x 150 mm) 4129685-02
- creative™ 4.0 Embroidery Collection
- Topstitch Needle 620 07 15-96

## Embroider

- Cut linen fabric 1 - 17" x 25" (43 x 64 cm). Mark the starting positions for the embroideries as shown.



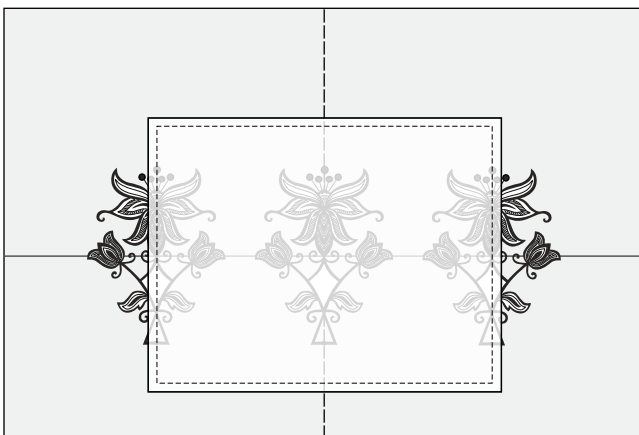
Hoop the fabric with tear away stabilizer underneath according to your markings. Start with the embroidery in the middle.

- Set your creative™ 4.0 sewing and embroidery machine for embroidery. Thread with white embroidery thread on top and bobbin thread in the bobbin. Choose design #9. Embroider. Continue to embroider the other two designs. Tear away the stabilizer.

## Cut

3/8" (1 cm) seam allowance included in all measurements.

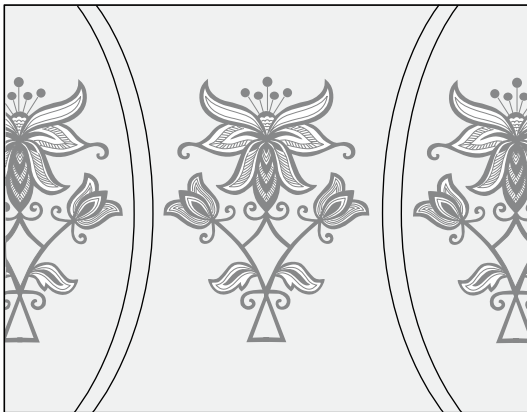
- Print out the pattern pieces. Cut out the pattern pieces.
- Place the pattern for the front piece (A1-A4) on top of the embroidered piece and cut.



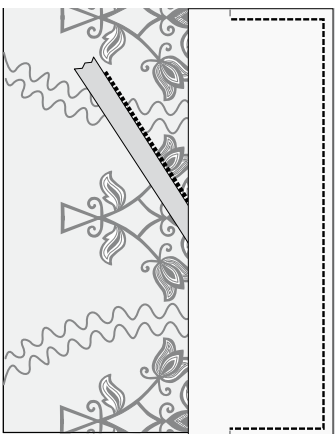
- Cut out from the linen fabric, the back piece(A1-A4), front and back facing(B1-B2), 2 side facings(C), base piece(D1-D2) and 2 side pieces(E).
- Cut out from the fusible interfacing, the front piece, back piece, base piece and 2 side pieces.
- Cut out from the lining fabric, the front and back lining pieces(F1-F2), 2 side lining pieces(G), and base piece(D1-D2).
- Transfer all the markings from the patterns to the fabric.

## Sew

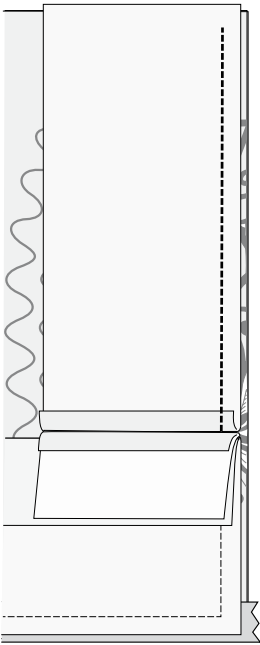
- Press fusible interfacing on the wrong side of the front piece, back piece, base piece and the side pieces.
- On the embroidered front piece, mark two lines between the embroideries with a water soluble marker.



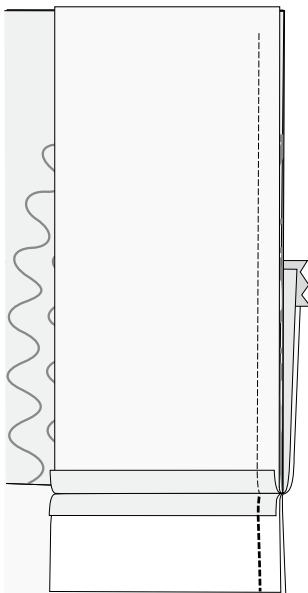
- Set your creative™ 4.0 sewing and embroidery machine for sewing. Select scallop stitch #4.5.24. Thread with dark grey embroidery thread, snap on Sewing Star Foot (IDT™ compatible) and sew along the lines.
- Place the zipper right sides together along the upper edge of the front piece, pin. Snap on the zipper foot. Thread with sewing thread on top and in the bobbin. Sew the zipper in place (find instructions on how to sew a zipper in the PFAFF® Accessory Catalogue).
- Place the facing piece on top, pin and sew along the top edge and down to the markings.



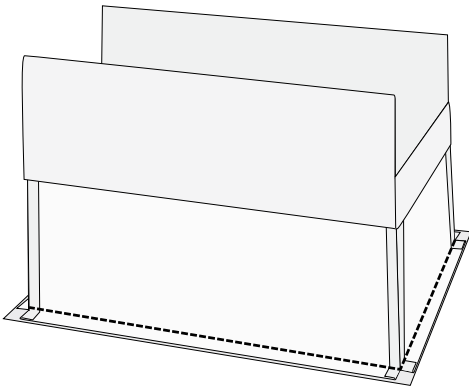
- Sew the other side of the zipper to the back piece in the same way.
- Turn to right side out and give the edge and corner a press. Turn back to the wrong side again.
- Pin the side facing to the top of the side piece, right sides together and sew. Press the edge.
- Pin the side pieces to the front and back piece, right sides together, be sure to match the markings. Start stitching from the top of the side piece where the facing was attached, down and stop stitching  $\frac{3}{8}$ " (1 cm) from bottom, back stitch. Press the seam allowances open.



- Sew the facing side seams together as shown.



- Pin the base to the bag, carefully matching the corners with the side seams. Sew with a straight stitch. Press the seams and turn to right side.

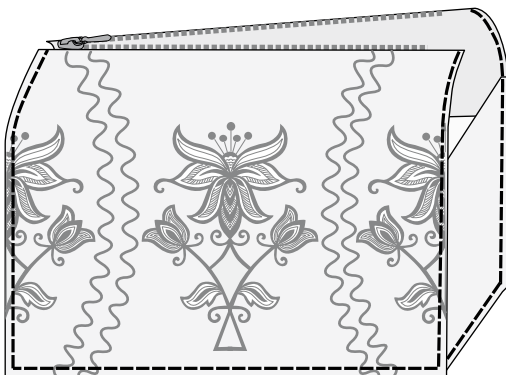


## Lining:

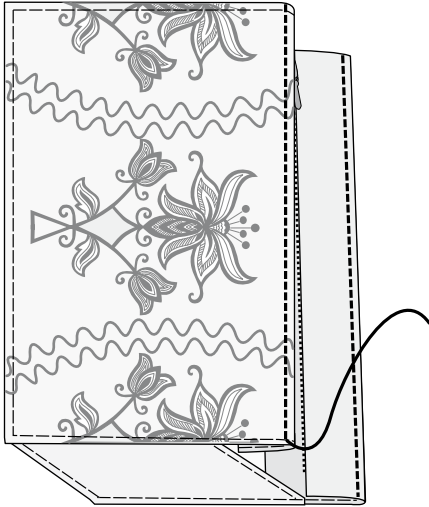
- Pin and sew the lining side pieces with the lining front and back piece right sides together. Pin and sew the lining base in the same way as with the bag but leave an 8" (20 cm) opening in one of the long sides.
- Pin and sew the upper edge of the lining to the edge of the facing, right sides together. Press. Turn the bag to the right side through the lining opening. Snap on Bi Level Top Stitch Foot. Top stitch the lining opening closed. Put the lining inside the bag and give your bag a final press.

## Topstitch:

- Fold sewn bag along each side edge and along each edge of base, wrong side facing in. Snap on Narrow Edge Foot. Change to Topstitch needle. Working from outer side, topstitch close to each fold edge, stitching into corners as far as possible.

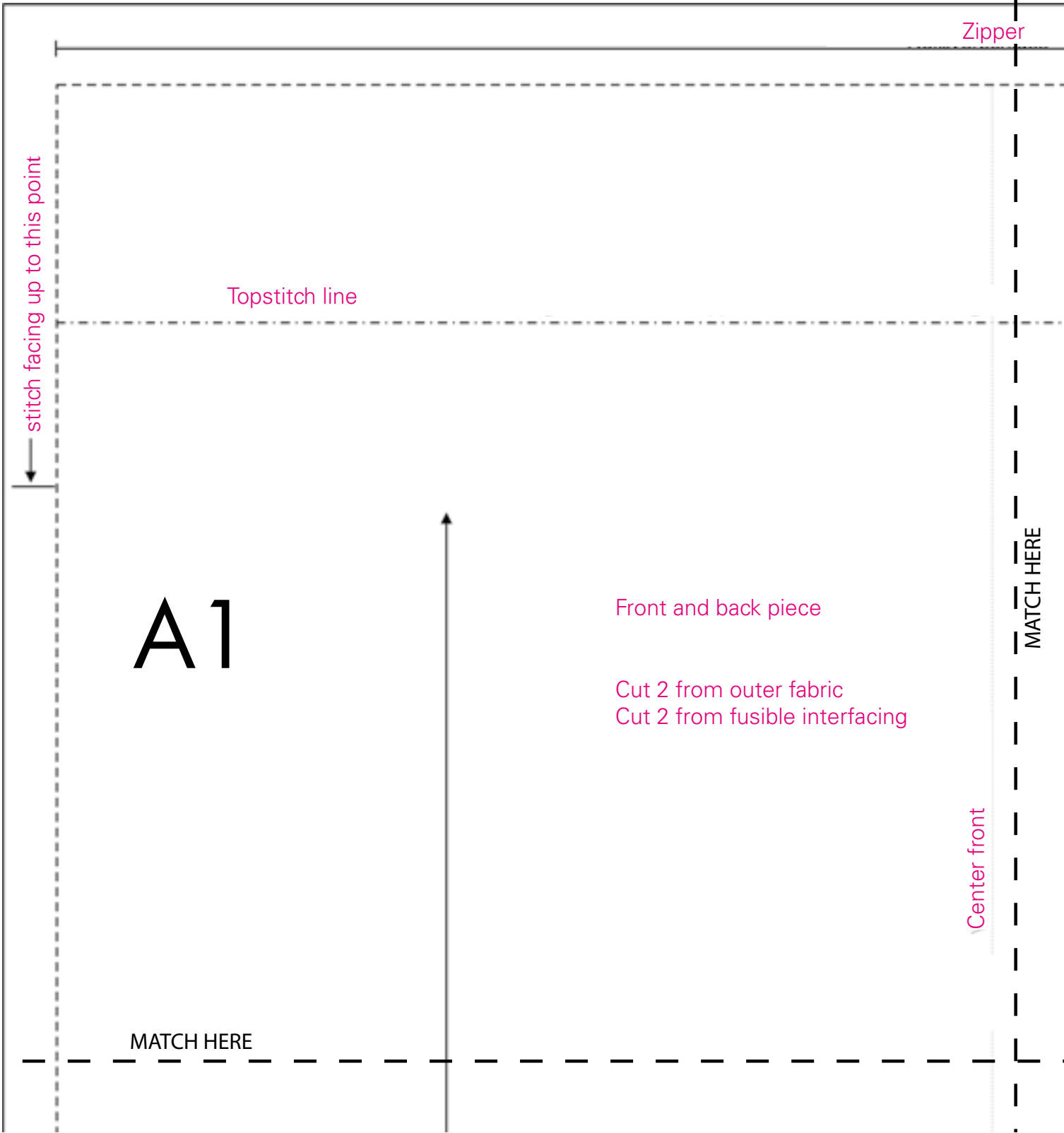


- Topstitch along the upper topstitch line, catching outer fabric and facing.  
Fold to inside along stitching, topstitch close to fold, working from outer side.



- Place the handles 2 cm from upper folded edge. Sew the handles in place.





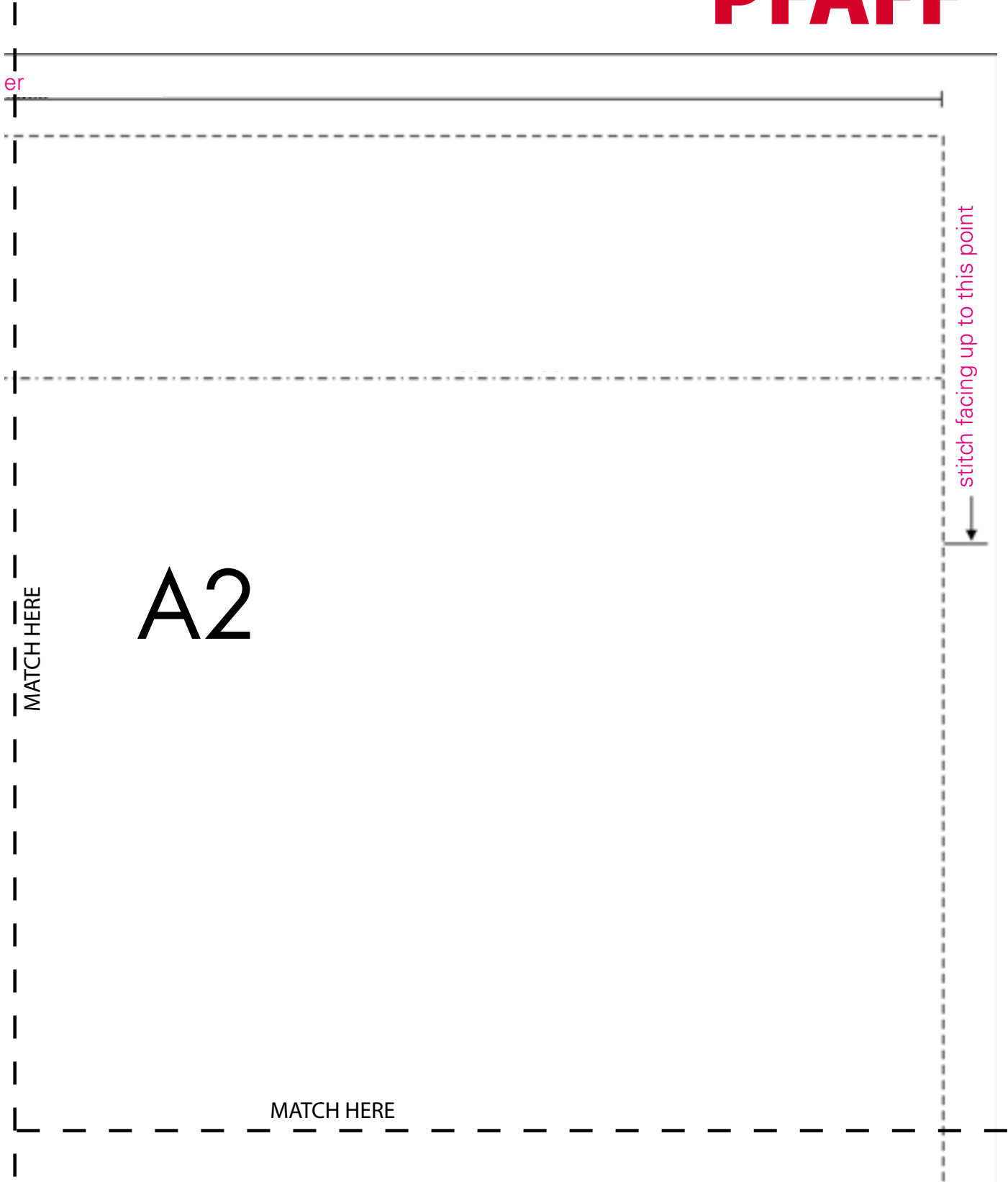
er

stitch facing up to this point

MATCH HERE

A2

MATCH HERE





MATCH HERE

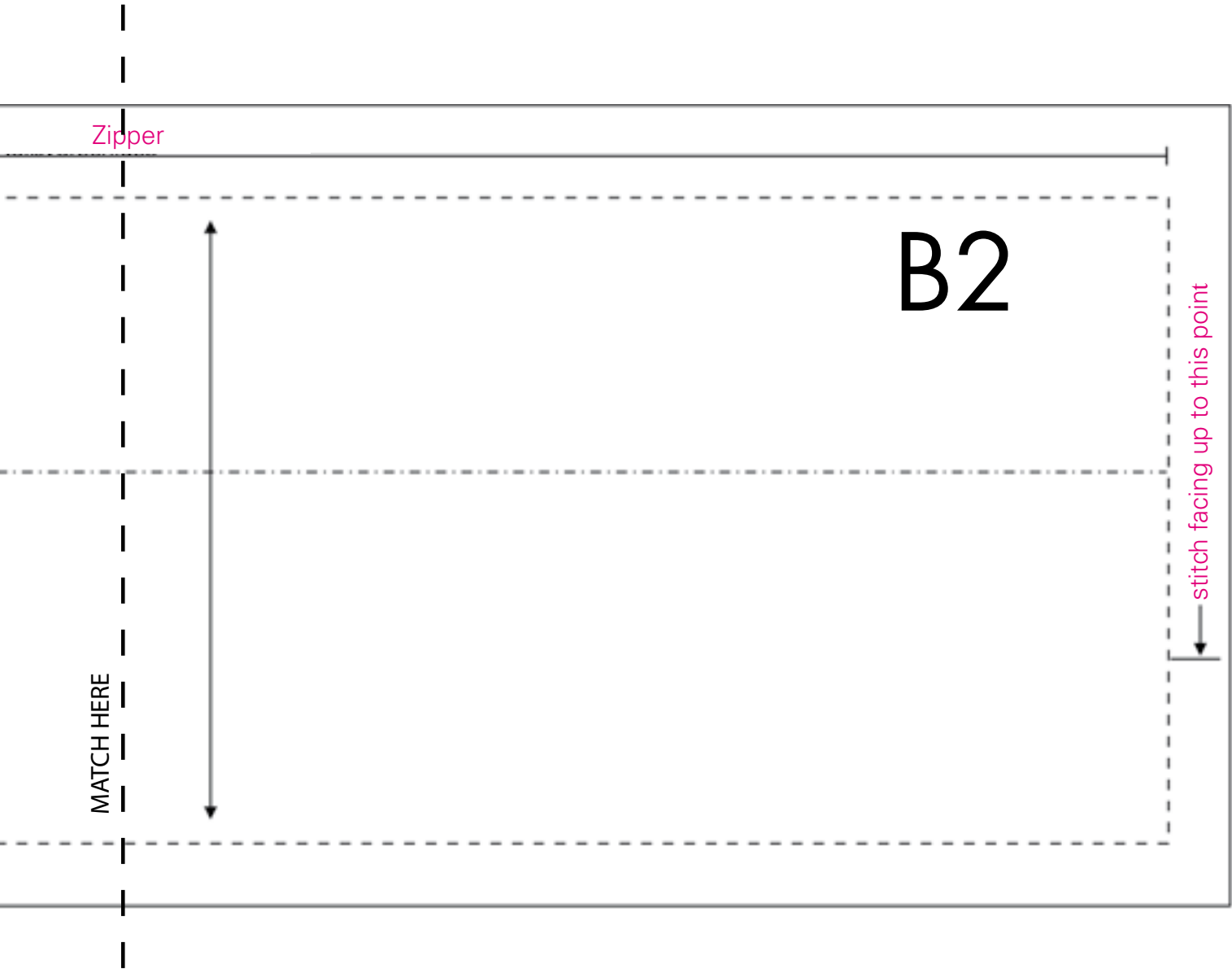
**A3**



MATCH HERE

**A4**





**D1**

Base

- Cut 1 from outer fabric
- Cut 1 from fusible interfacing
- Cut 1 from lining

MATCH HERE

MATCH HERE

D2

cing

**F1**

Lining front and back

MATCH HERE

F2

MATCH HERE





