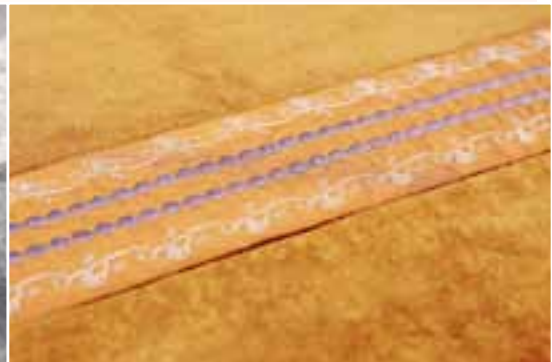


**PFAFF**<sup>®</sup>



creative sensation<sup>™</sup> Towels

## Supplies

- PFAFF® **creative sensation™** sewing and embroidery machine
- 3 Terry towels in colors of your own choice  
20" x 28" (51 x 71 cm)
- Fabric for decoration: 12" x 21" (30 x 53 cm) of each matching the color of your towels.
- Regular sewing thread matching the fabric and the towels.
- Rayon embroidery thread in a color collection that fits well with your towels
- Tear-a-way stabilizer
- Pins
- Fabric marker pen

## PFAFF® Accessories

- **creative™** Endless Hoop 180 x100 mm,  
# 820 893-096
- INSPIRA® Embroidery Needle, size 75,  
#620071796

You can find these and many other accessories in the PFAFF® Accessory on-line catalogue or on our website [www.pfaff.com](http://www.pfaff.com), for purchase at your nearest PFAFF® dealer.

## Decorate fabric for towel 1 (purple)

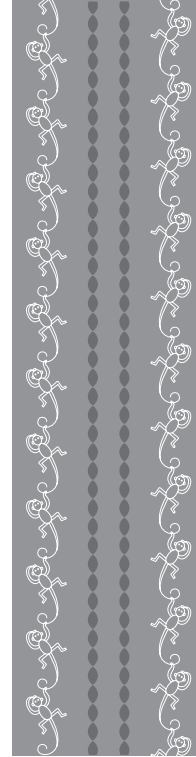
- Insert an INSPIRA® size 75 embroidery needle. Thread the machine with embroidery thread on top and bobbin thread in the bobbin. Attach on your embroidery foot.
- Use the fabric marker pen to mark the placement of the design. Draw one vertical and one horizontal center line.
- Hoop the fabric in the Endless Hoop with tear away stabilizer underneath. Match the lines on the fabric with the marks of the hoop.
- Set the machine for embroidery and select design CS\_025 from the design collection that comes with your **creative sensation™**. Rotate the design 90°.
- Select the mini design M\_60 from the design collection that comes with your **creative sensation™**.



- Go to Shaping, select the straight line. Set the line length to 160 mm. Add 12 repeats, to get a total of 13 designs on the line. Touch the Side-positioning icon and turn each design 90 degrees horizontal. Touch OK to close the Shaping pop-up. Make a copy of the border and place one border on each side of the first design.
- Embroider the design. Use Precise Positioning to repeat the design two times in the right position. In the Owner's Manual for your PFAFF® **creative sensation™** you can find a detailed description of how to use Precise Positioning.

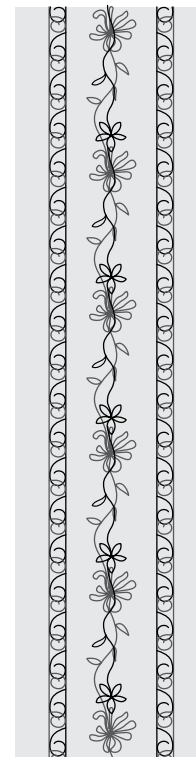
## Decorate fabric for towel 2 (orange)

- Change color of the embroidery thread and snap on your 2A - Fancy stitch foot, included with your machine. Set the machine for normal sewing.
- Select the Antique Hand Embroidery stitch no. 3.3.18. Place the fabric on a piece of tear away stabilizer.
- Stitch two seams in the center of the fabric with approximately 3/4" (2 cm) in between.
- Change color of the thread and select another decorative stitch, we used stitch 5.4.7 from the Maxi Fun stitches. Change to presser foot 8 - Maxi Stitch Foot. Stitch one seam on each side of the first stitches.



## Decorate fabric for towel 3 (grey)

- Change color of the embroidery thread and snap on your 8 - Maxi Stitch Foot. Set the machine for normal sewing.
- Place the fabric on a piece of tear away stabilizer. Select the Stacking stitch no. 6.4.7 and sew a seam in the center of the fabric.
- Change color of the thread, select stitch no. 6.4.8 and sew this seam on top of the first. Be sure to use the same starting point as the first stitch.
- Select another Stacking stitch no. 6.4.13 and sew this seam next to the first two stitches.
- Change color of the embroidery thread and change to your 2A - Fancy stitch foot. Select stitch no. 6.4.14 and sew this seam overlapping the previously sewn stitch. Be sure that the starting point is at the same horizontal line.



- Sew another row of the 6.4.13 and 6.4.14 Stacking stitches on the other side of the first two stitches.

## Sew the decorated fabric to the towels

- Tear away the stabilizer and cut the fabric to the height of 6" (15 cm) and the width of your towel plus seam allowance.
- Fold and press the raw edges to the wrong side.
- Thread the machine with a thread matching the color of the fabric.
- Pin the decorated fabric to the lower edge of the towel and sew a straight stitch near the edge on each side.

