

PFAFF®



expression™ Dress

You need

- PFAFF® expression™ sewing machine
- Your favourite dress pattern
- Fabric and lining according to dress pattern
- 20" x 45" (51 x 115 cm) purple silk fabric
- 20" x 36" (51 x 90 cm) fusible interfacing (optional, only if silk fabric is lightweight)
- Sewing thread to match the fabric
- Light grey embroidery thread
- Bobbin thread
- Invisible zipper
- Tear away stabilizer
- Water soluble marker
- Pins
- Decorative pearl buttons (52 leaves and 6 circles)
- Fabric glue

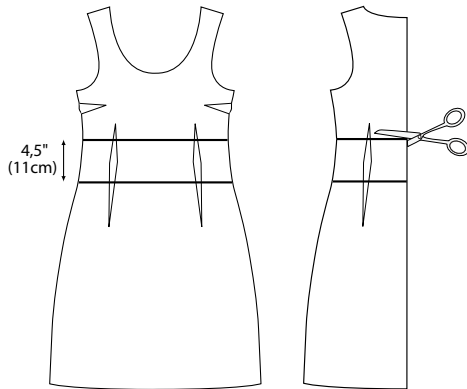
PFAFF® Accessories

- | | |
|----------------------------|------------|
| • Sewing Star Foot | 820654-096 |
| • Seam Guide Foot with IDT | 820772-096 |
| • Invisible Zipper Foot | 820474-096 |

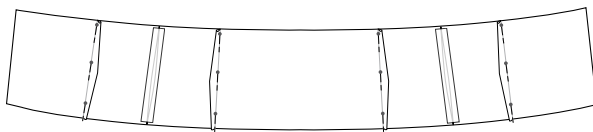
You will find these and many other accessories in the PFAFF® Accessory Catalogue, on the web site www.pfaff.com, and for purchase at your nearest PFAFF® Dealer.

Pattern change

To add the embellished band to your dress you will need to make a few pattern changes. Mark the placement line for the band right under the bust line on the front piece as illustrated. Mark the height of the band 4.5" (11 cm). Repeat on the back piece.



Cut out the pattern pieces for the band and pin the darts together on the back and front pieces. Tape the side seam together on the back and front band pieces to get a whole band pattern piece without darts and side seams.




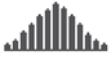
Cut

From dress fabric: front and back pieces according to pattern (not the band piece).
 From purple silk fabric: band with the new changes.
 From lining: front and back pieces according to pattern.

Sew

Embellished Band: If the fabric for the band is lightweight, press fusible interfacing on the wrong side of the band piece. Snap on the Sewing Star Foot and thread the top of your machine with embroidery thread and bobbin thread in the bottom.

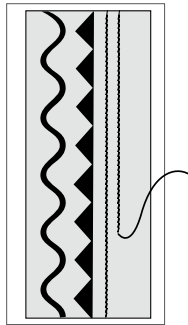
In order to evenly space the embellishment on the band you will need to stitch a sample of the stitches on a scrap of fabric and make photocopies of the stitched fabric and arrange them on the band.

- Mark a line on a scrap of  fabric and place tear away stabilizer underneath. Choose the following decorative  stitch and sew a line.

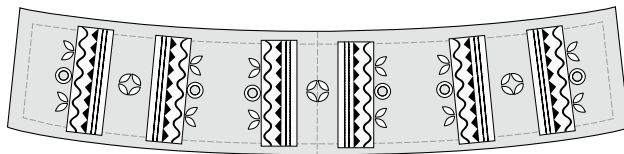
Sew the following decorative stitch to the right of the first stitch.





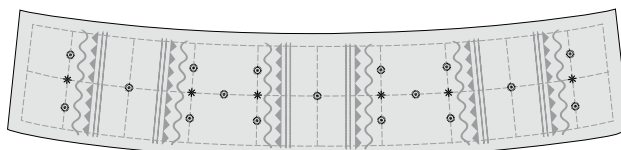
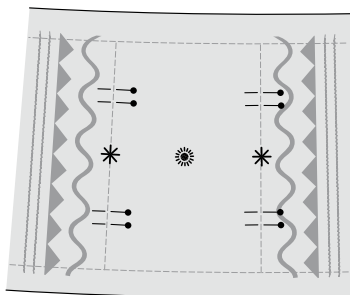
Sew two stretch tricot stitches to the right of the two stitches as shown in the illustration.



- Make five photocopies of the stitched fabric piece and arrange them together with the decorative pearl buttons as illustrated. You may need more copies depending on the size of the band.



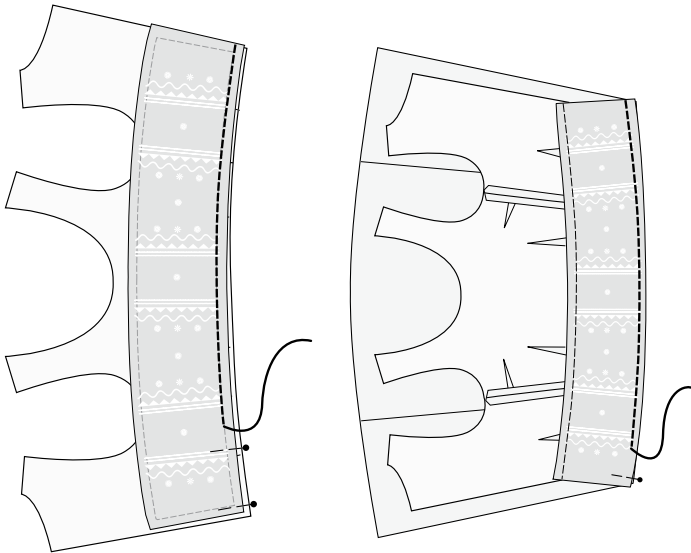
- Mark the placement of the stitches with a marking pen. Place Tear away stabilizer under the fabric band and sew all the stitches. Tear away the stabilizer and press.
- Arrange the buttons on the band and mark the placement of the small stitched flowers. We used a single stitch from the following stitches:  and  . Sew all the flowers on the band.



- Place the band on a flat surface and arrange all the buttons on the band and glue them in place to keep the buttons in the right position. Sew the buttons in place by hand.

Dress

- Sew the side seams on the dress using the Seam Guide Foot with IDT™. Pin and sew the decorative band to the dress.



- Continue to sew the dress according to the pattern instruction. Use the Invisible Zipper foot to insert the zipper into the dress.