



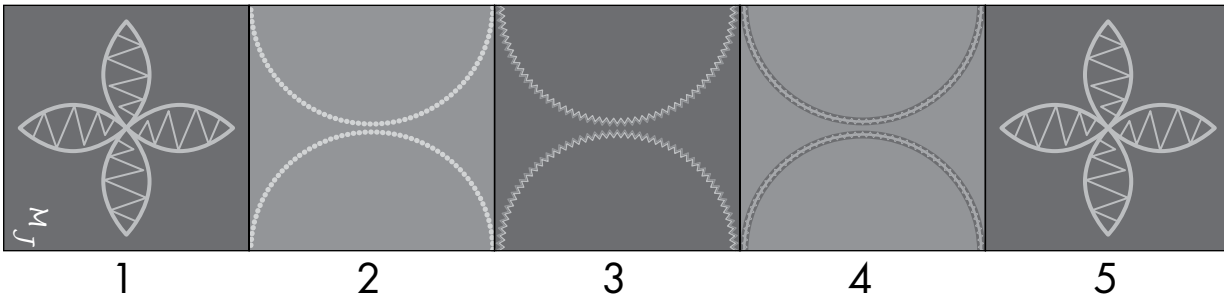
performance™ 5.0

Table runner

Supplies

PFAFF® performance™ 5.0 sewing machine
 Yarn Couching Feet set (820912096)
 Three Hole Yarn Foot for IDT™ system (820920096)
 Circular Attachment (821026096)
 Couching/Braiding Foot for IDT™ system (820607096)
 Twin Needle
 Assorted yarns

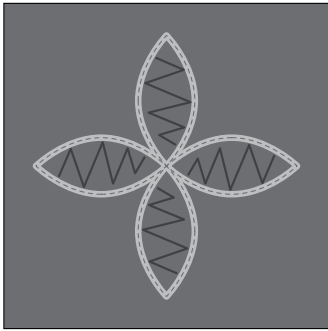
Decorative thread
 Fabric marking pen
 Cotton fabric in four different colors
 Lining
 Medium weight fusible interfacing
 Tear-Away Stabilizer



Preparations

You can find more information about the different accessories in the PFAFF® on-line Accessory Catalogue.

- Cut your fabric in 5 squares, 17" x 17" (43x43cm). Two of the 5 squares should be in the same color. Cut out your lining 17" x 82" (43x203cm).
- Iron medium quilt batting to the backside of all five squares.
- Mark the center of each square and seam allowance, 1" (3 cm) on all squares.
- Draw two semicircles on three of the squares, using your fabric marking pen.
- Place a layer of tear-away stabilizer unsquares to support your stitching.
- Try the different techniques on a scrap of fabric before starting to decorate the squares for the table runner.

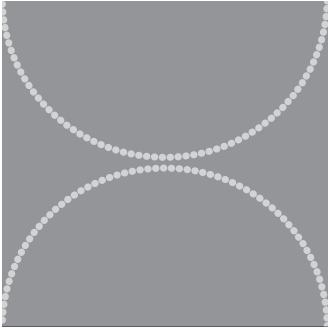


Squares 1 & 5

Choose yarn for the flower. Use the couching/braiding foot for IDT™ together with the Circular Attachment templates to make a 9 3/8" (24cm) flower. For more information see the instructions and CD that come with the Circular Attachment.

Draw lines inside the flower with a fabric marking pen. Embellish with the the Yarn Couching Foot Set.

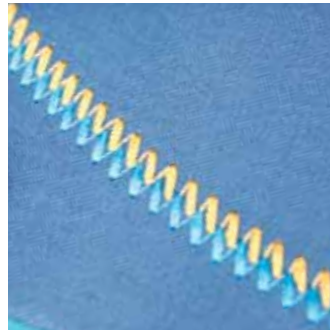
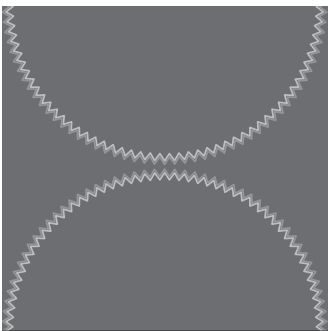
Place a MAXI monogram on one of the two squares.



Square 2

Thread your machine with regular sewing thread or decorative thread. Select stitch 4.3.6.

Sew the two semicircles.



Square 3

Insert a twin needle into the machine and thread with two different threads. Select stitch nr 3.3.17; adjust the stitch width to the maximum. Sew the two semicircles.



Square 4

Choose decorative thread that matches your fabric. Thread the machine. Select stitch 6.2.6. Thread yarn through the holes in the Three Hole Yarn Foot and snap the foot onto your machine. Make sure to engage the IDT™ system. Sew the two semicircles.

Assembly

Press the individual squares from the backside to protect the stitching. Sew the squares together and press the seam allowances. Place the pieced table runner and backing fabric right sides together. Stitch around all four sides, leaving an opening X" (10cm) for turning.

Trim the seam allowance in the corners to reduce the bulk (see illustration).

Turn the right side out. Press. Topstitch the opening closed.

