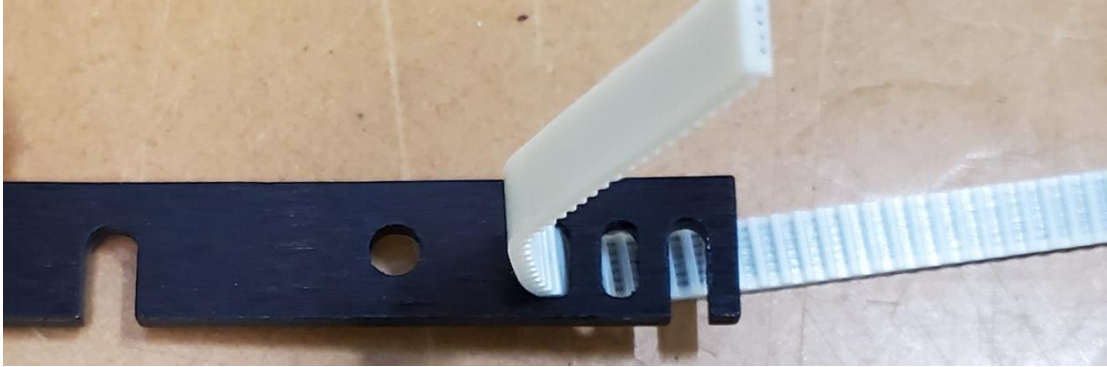


New Belt Installation Guide

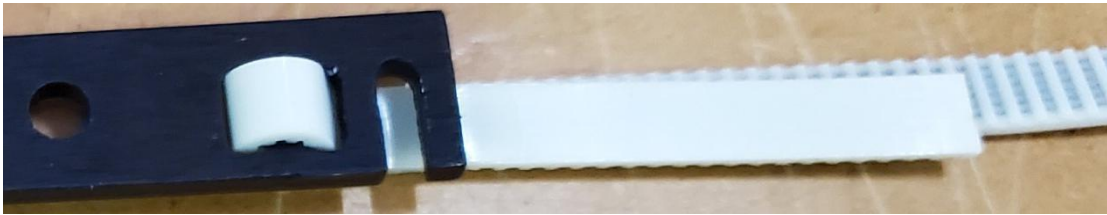
- A1 Y-Belt Bracket



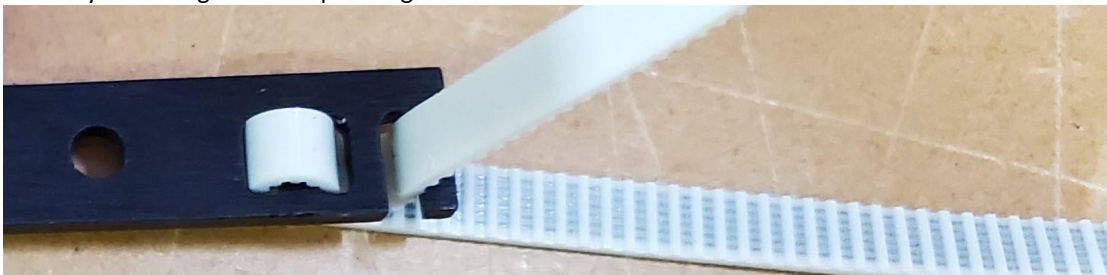
1. Thread the belt up the inner most slot



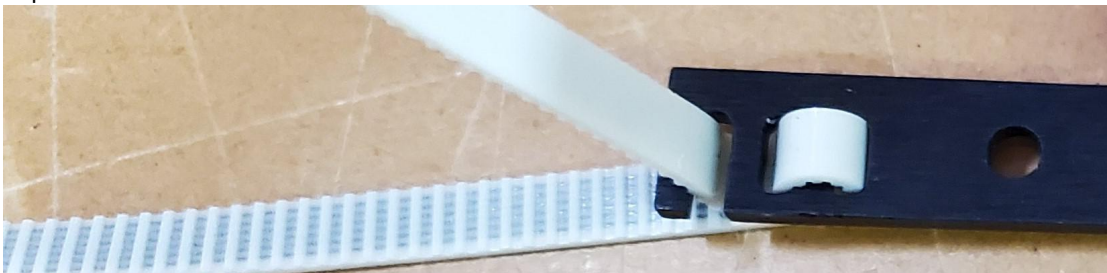
2. Thread the belt down the next outer slot



3. Finish by threading the belt up through the final slot

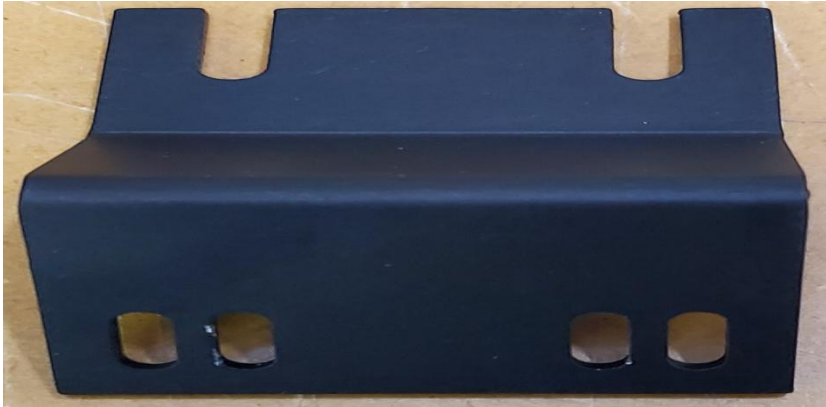


4. Repeat on other side

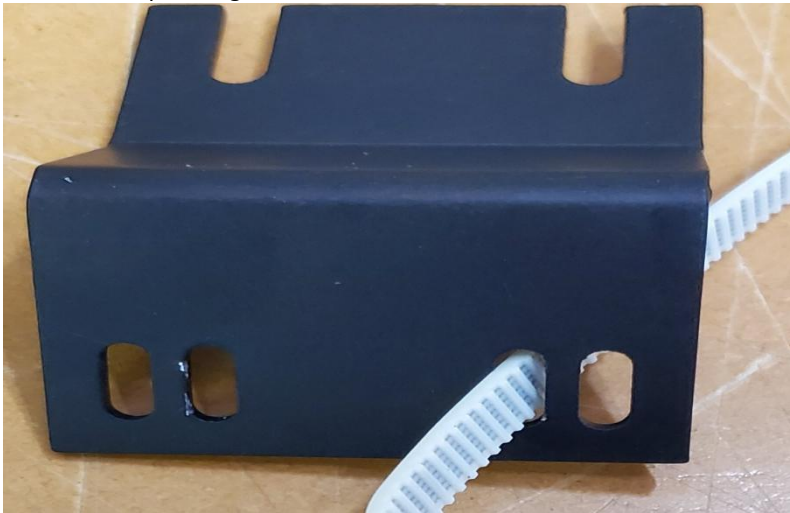


New Belt Installation Guide

- Phoenix Y-Belt Bracket



1. Thread belt up through inner slot



2. Thread belt down through the outer slot (Optional: you can add a zip tie to secure the belt together)



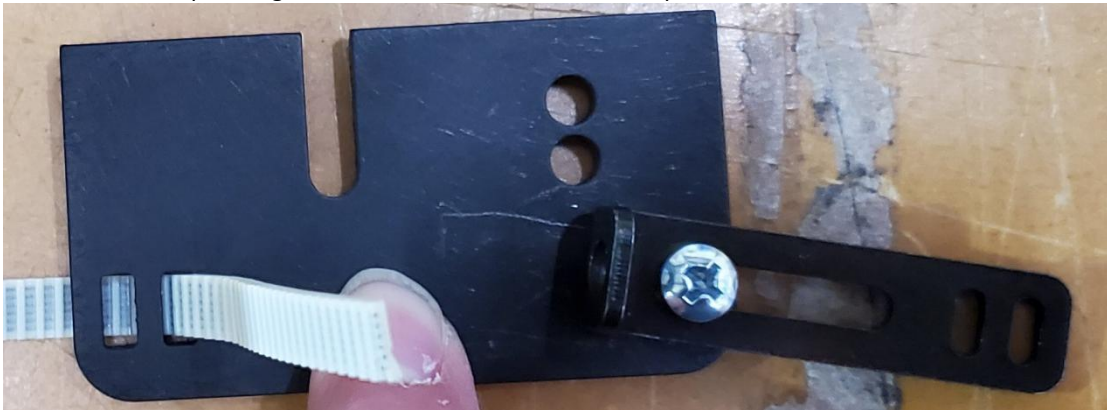
3. Repeat on other side and pull ends to tighten

New Belt Installation Guide

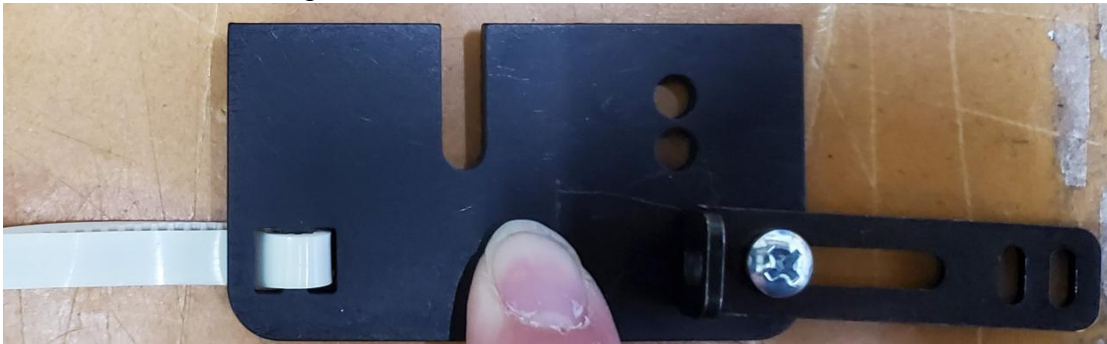
- Universal Y-Belt Bracket



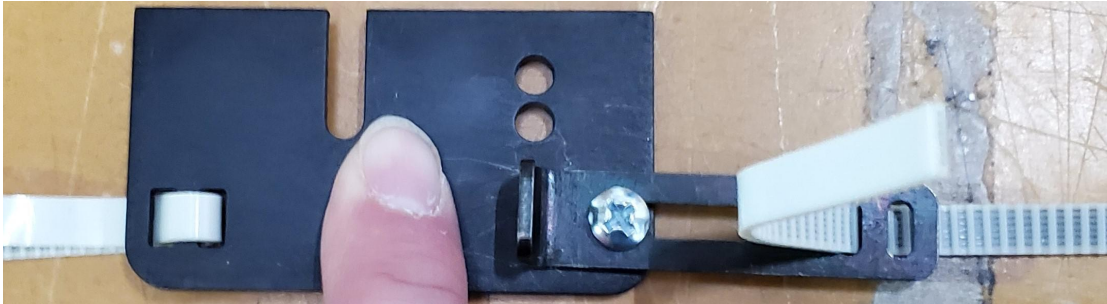
1. Thread the belt up through the inner slot that is on the main plate



2. Thread the belt down through the outer slot of the bracket to secure that end

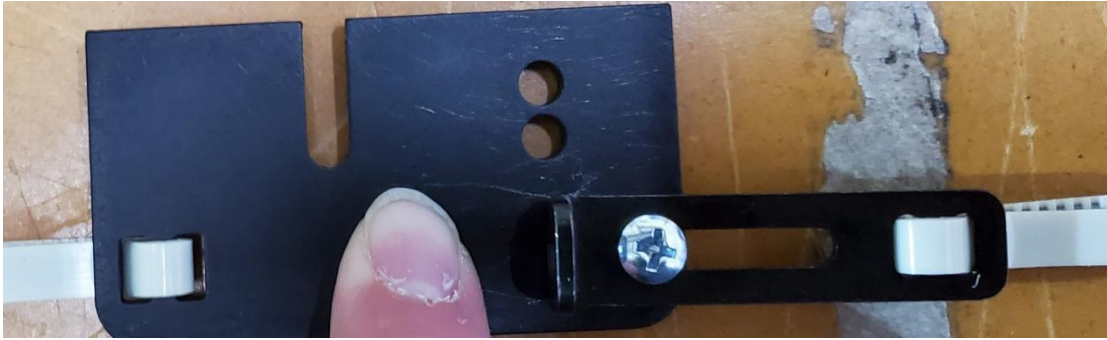


3. With the other end of the belt, thread it up through the inner vertical slot of the bracket arm

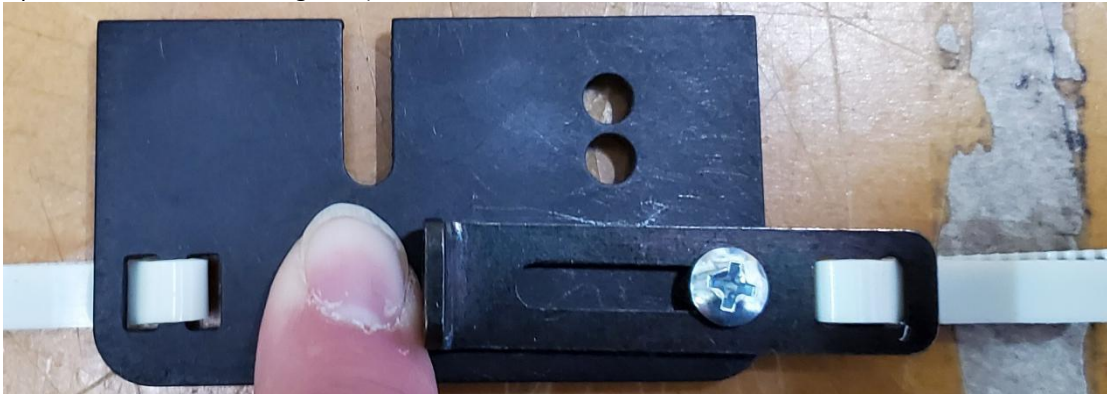


New Belt Installation Guide

4. Thread the belt back down through the outer slot of the arm and pull tight



5. Pull the arm towards the middle of the bracket to further tighten the belt (Optional: you can add a zip tie to secure the belt together)



New Belt Installation Guide

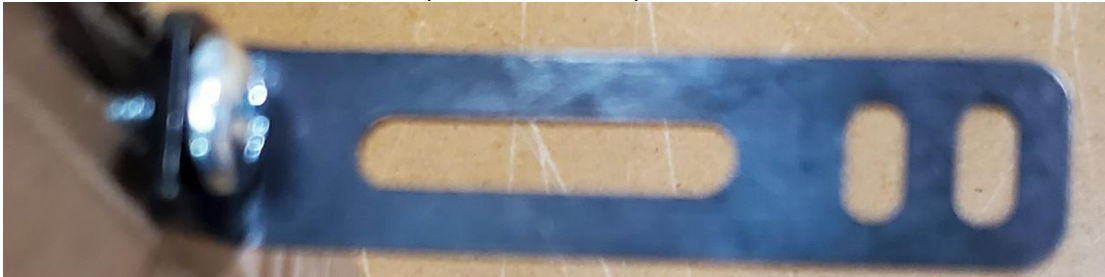
- Universal X-Belt Bracket



1. Use the screw provided through the circle hole at the base of the bracket



2. Use the screw to attach the bracket to your frame and/or your X-Belt Bracket



3. Thread the belt up through the inner paired slots



4. Then thread the belt through the outer slot and pull tight



5. Repeat on the other side of frame (Optional: you can add a zip tie to secure the belt together)

