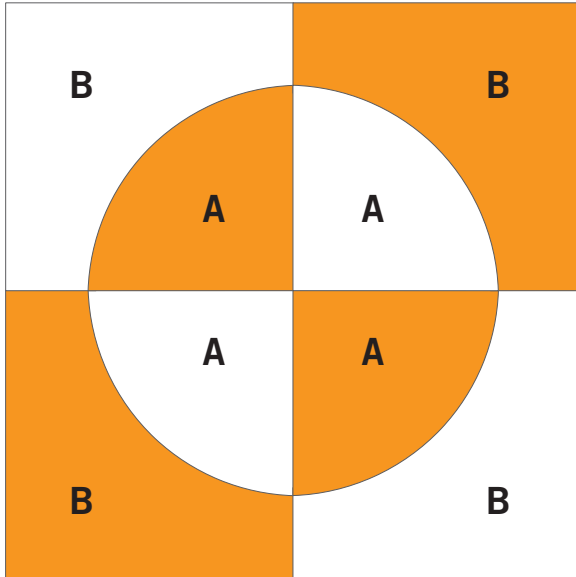




# GO!<sup>®</sup> Drunkard's Path-7" Finished

Item Number: 55034

## Fabric Cutting Tips for a 2-color, 14" finished Drunkard's Path block:

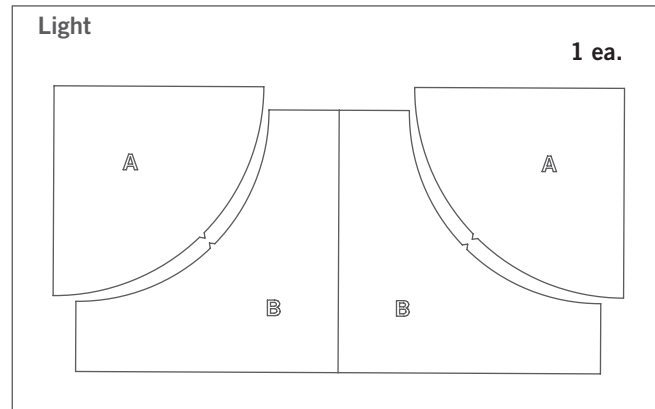
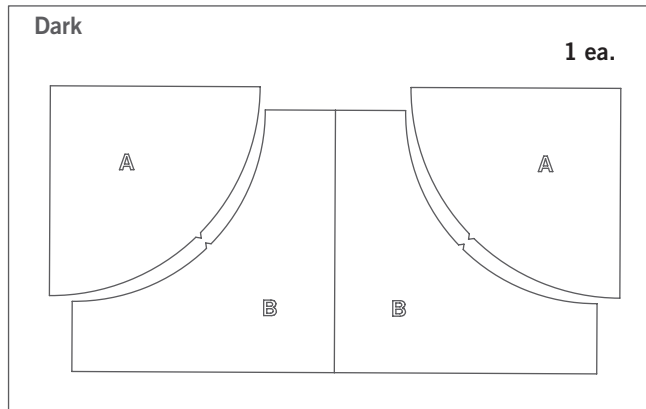


**Place fabric over shapes then run through the cutter:**

*For best cutting results, position fabric on the lengthwise grain (straight of grain) as it goes under the roller. Each set creates a 7" finished square. Four sets finish to an 14" block.*

- Cut a 17" strip across the width of fabric. Fanfold into 9" widths. Place on selected blade and cut. Cut eight Drunkard's Path Sets across the width of fabric. One yard of 40" wide fabric cuts 16 Drunkard's Path Sets.
- **TIP:** The die is specially designed to cut three complete 2-color, 14" finished Drunkard's Path blocks in one pass through the cutter. Cut three layers of one fabric color and three layers of a contrasting color over the shapes and cut.

## Shapes needed for 14" finished Drunkard's Path



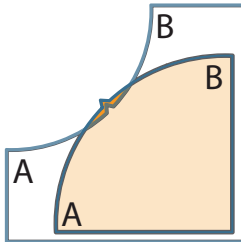


# GO!<sup>®</sup> Drunkard's Path-7" Finished

Item Number: 55034

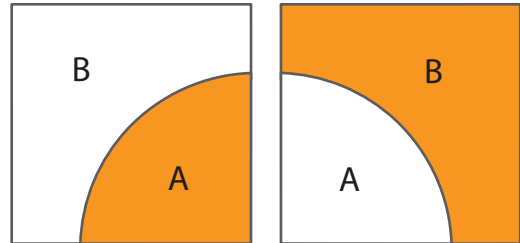
## How to Sew the Drunkard's Path Quilt Block:

**Step 1**



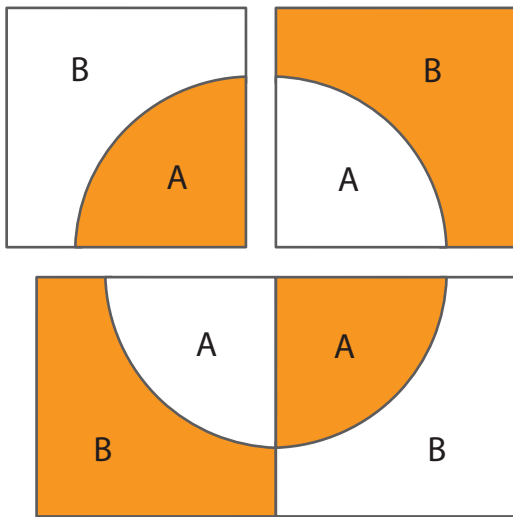
Lay Fabric #1 arc shape on top of Fabric #2 quarter circle shape, right sides together, matching notches. Pin together at notch. Aligning raw edges, match A corners and pin. Match B corners and pin. Matching raw edges; add pins, as needed to ensure a smooth seam.

**Step 2**



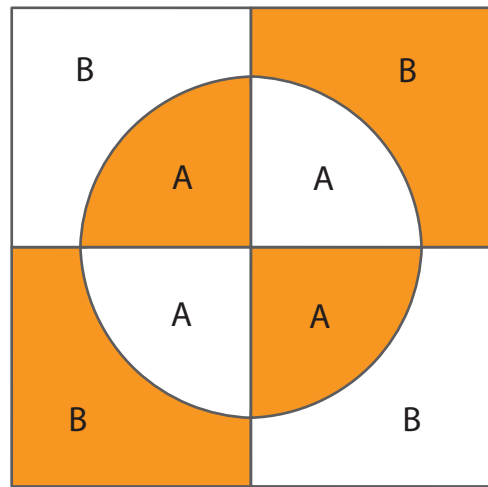
Using a consistent 1/4" seam allowance and stretch or ease both fabrics, as needed, sew piece A to piece B to make a Drunkard's Path quarter block/unit. The unit should measure 7 1/2" x 7 1/2".

**Step 3**



Lay out four units as shown.  
Pin and sew units into rows.  
Sew rows together to make a complete block.

**Step 4**



Drunkard's Path block should measure 14 1/2" x 14 1/2".



# GO!® Drunkard's Path-7" Finished

Item Number: 55034

## Drunkard's Path Quilt Block Coloring Page

Print out and color as desired to test out different color and fabric combinations.

