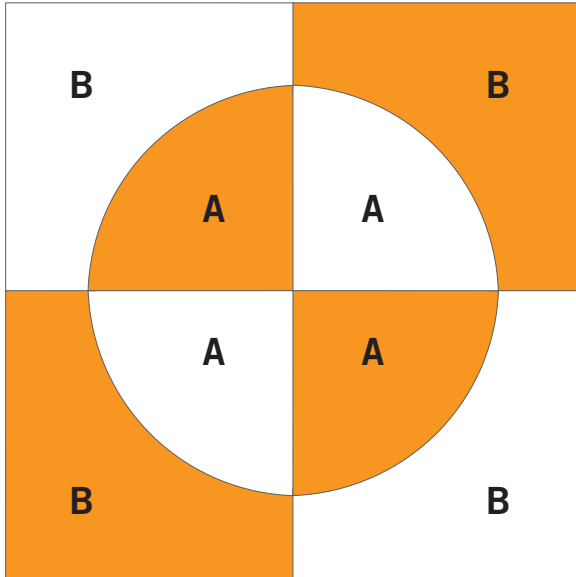




## GO!® Drunkard's Path-3½" Finished

Item Number: 55070

### Fabric Cutting Tips for a 2-color, 7" finished Drunkard's Path block:

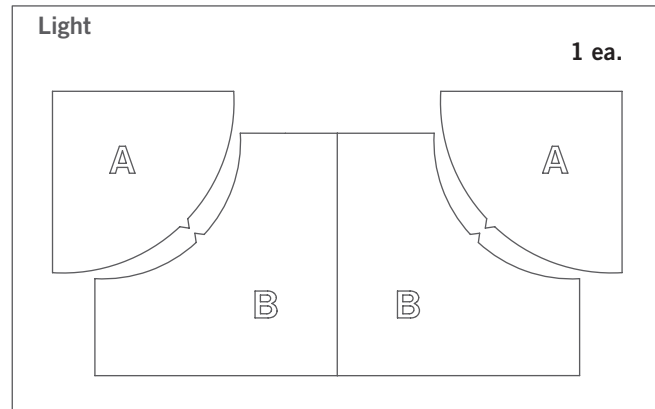
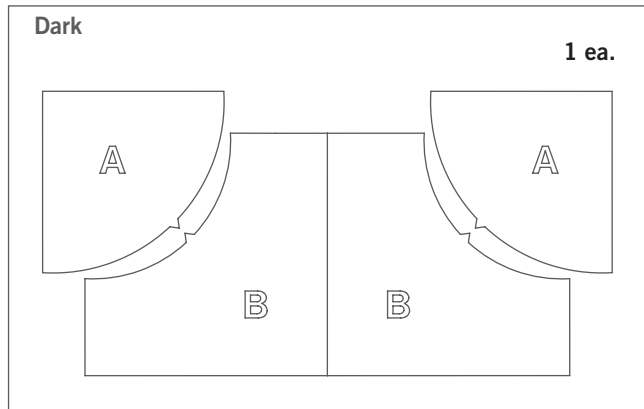


#### Place fabric over shapes then run through the cutter:

*For best cutting results, position fabric on the lengthwise grain (straight of grain) as it goes under the roller. Cut four layers at a time with two layers of the first fabric color and two layers of a second fabric color to cut two, 2-color blocks in one pass through the cutter.*

- **Quarter Circle:** Cut 3½" strips across the width of the fabric. Fanfold into 3½" widths. Place on selected blade and cut. Cut 11 quarter circles across the width of fabric. One yard of 40" wide fabric cuts 110 quarter circles.
- **Arc Shape:** Cut 4½" strips across the width of fabric. Fanfold into 4½" widths. Place on selected blade and cut. Cut 10 arc shapes across the width of fabric. One yard of 40" wide fabric cuts 64 arc shapes.

### Shapes needed for 7" finished Drunkard's Path



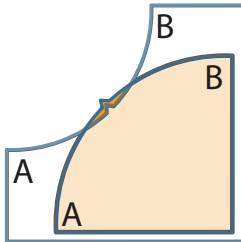


# GO!<sup>®</sup> Drunkard's Path-3½" Finished

Item Number: 55070

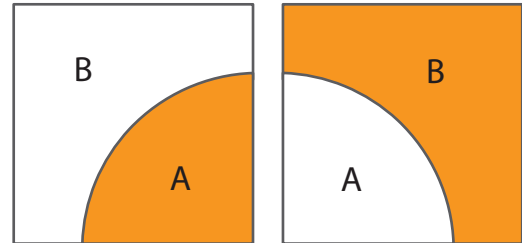
## How to Sew the Drunkard's Path Quilt Block:

**Step 1**



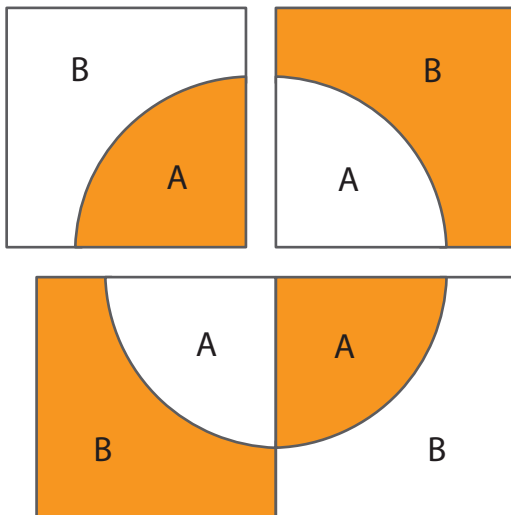
Lay Fabric #1 arc shape on top of Fabric #2 quarter circle shape, right sides together, matching notches. Pin together at notch. Aligning raw edges, match A corners and pin. Match B corners and pin. Matching raw edges; add pins, as needed to ensure a smooth seam.

**Step 2**



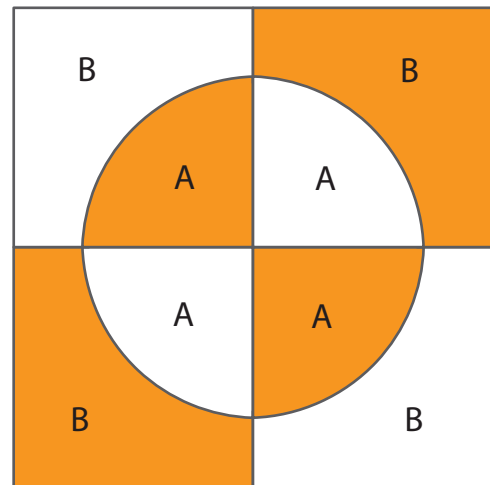
Using a consistent ¼" seam allowance and stretch or ease both fabrics, as needed, sew piece A to piece B to make a Drunkard's Path quarter block/unit. The unit should measure 4" x 4".

**Step 3**



Lay out four units as shown.  
Pin and sew units into rows.  
Sew rows together to make a complete block.

**Step 4**



Drunkard's Path block should measure 7½" x 7½".



# GO!® Drunkard's Path-3½" Finished

Item Number: 55070

## Drunkard's Path Quilt Block Coloring Page

Print out and color as desired to test out different color and fabric combinations.

