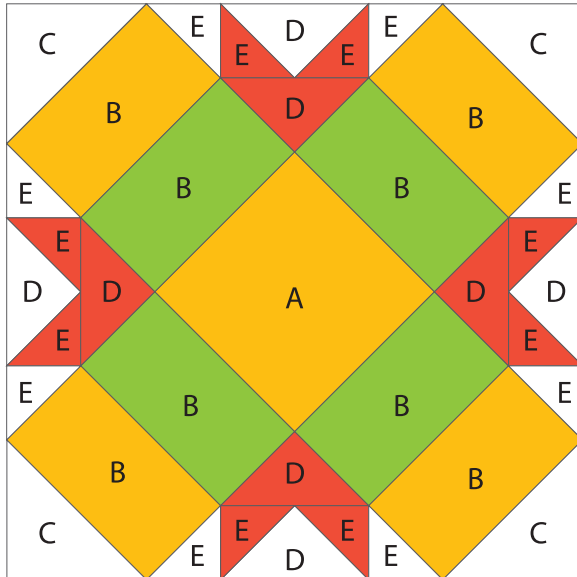




GO!® Turkey in the Straw-10" Finished

Item Number: 55628

Fabric Cutting Tips for one 4-color, 10" finished Turkey in the Straw block:

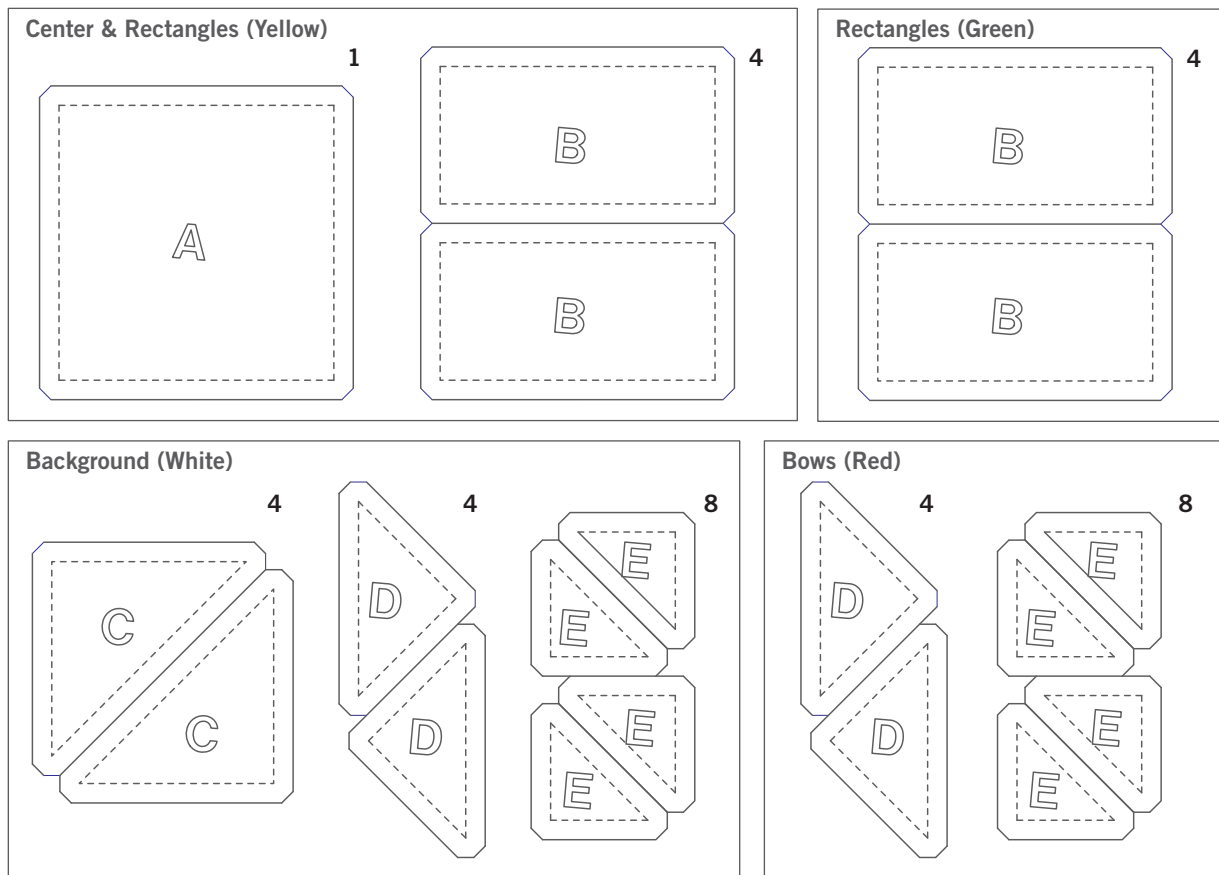


Place fabric over shapes then run through the cutter:

For best cutting results, position fabric on the lengthwise grain (straight of grain) as it goes under the roller. Tip: The die is specially designed to cut one complete 4-color 10" finished block in one pass through the cutter.

- **Fabric Color 1 (Yellow):** Cut one 4½" square. Place right side up over shape A to cut one shape.
 - Cut two 5" x 4½" rectangles. Place right side up over shapes B to cut four shapes.
- **Fabric Color 2 (Green):** Cut two 5" x 4½" rectangles. Place right side up over shapes B to cut four shapes.
- **Fabric Color 3 (Background/White):** Cut two 3⅞" squares. Place right side up over shapes C to cut four shapes.
 - Cut two 2⅜" x 5⅜" rectangles. Place right side up over shapes D to cut four shapes.
 - Cut two 2⅝" x 4¾" rectangles. Place right side up over shapes E to cut eight shapes.
- **Fabric Color 4 (Red):** Cut two 2⅜" x 5⅜" rectangles. Place right side up over shapes D to cut four shapes.
 - Cut two 2⅝" x 4¾" rectangles. Place right side up over shapes E to cut eight shapes.

Shapes needed for 10" finished Turkey in the Straw Block





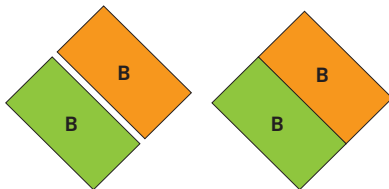
GO!® Turkey in the Straw-10" Finished

Item Number: 55628

How to Sew the 4-color, 10" finished Turkey in the Straw Block:

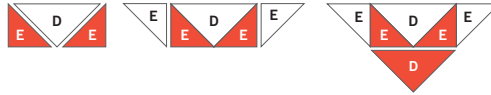
Read through assembly instructions before starting sewing. Use a 1/4" seam allowance. Press seams open unless otherwise directed in pattern.

Step 1



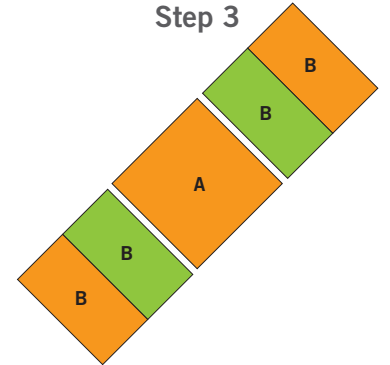
Sew two B pieces together as shown. Make 4 B/B units.

Step 2



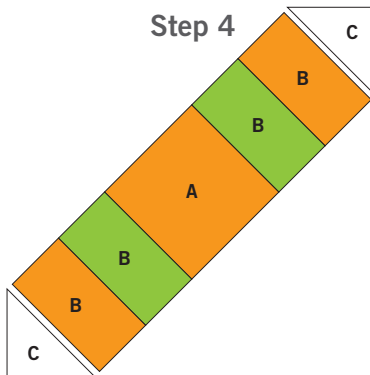
Sew an E piece to either side of piece D as shown. Then sew an E piece to either side of E/D/E unit to create E/E/D/E/E unit. Sew D piece to unit as shown. Make 4 E/E/D/E/E/D units.

Step 3



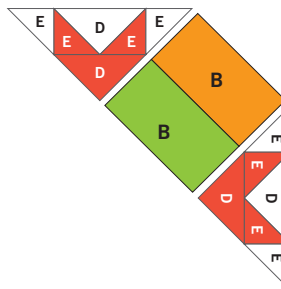
Sew two B/B units to either side of piece A as shown to make B/B/A/B/B unit.

Step 4



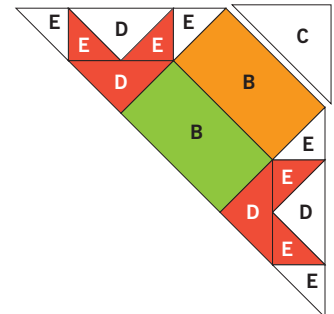
Sew a C piece to either side of B/B/A/B/B unit as shown.

Step 5



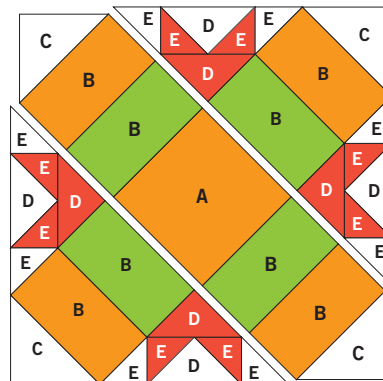
Sew an E/E/D/E/E/D unit (Step 2) to either side of B/B unit (Step 1) as shown. Make 2 units.

Step 6



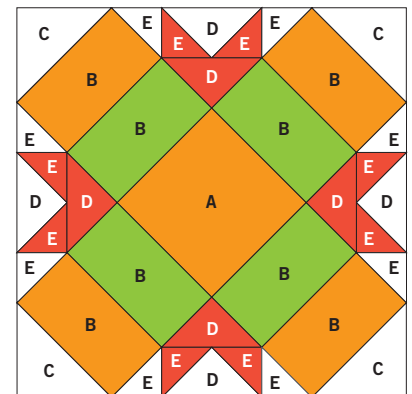
Sew a C piece to end of quarter unit as shown. Make 2 units.

Step 7



Sew units from Steps 4 and 6 as shown to create block.

Step 8



Block should measure 10 1/2" x 10 1/2".



GO!® Turkey in the Straw-10" Finished

Item Number: 55628

Turkey in the Straw Quilt Block Coloring Page

Print out and color as desired to test out different color and fabric combinations.

