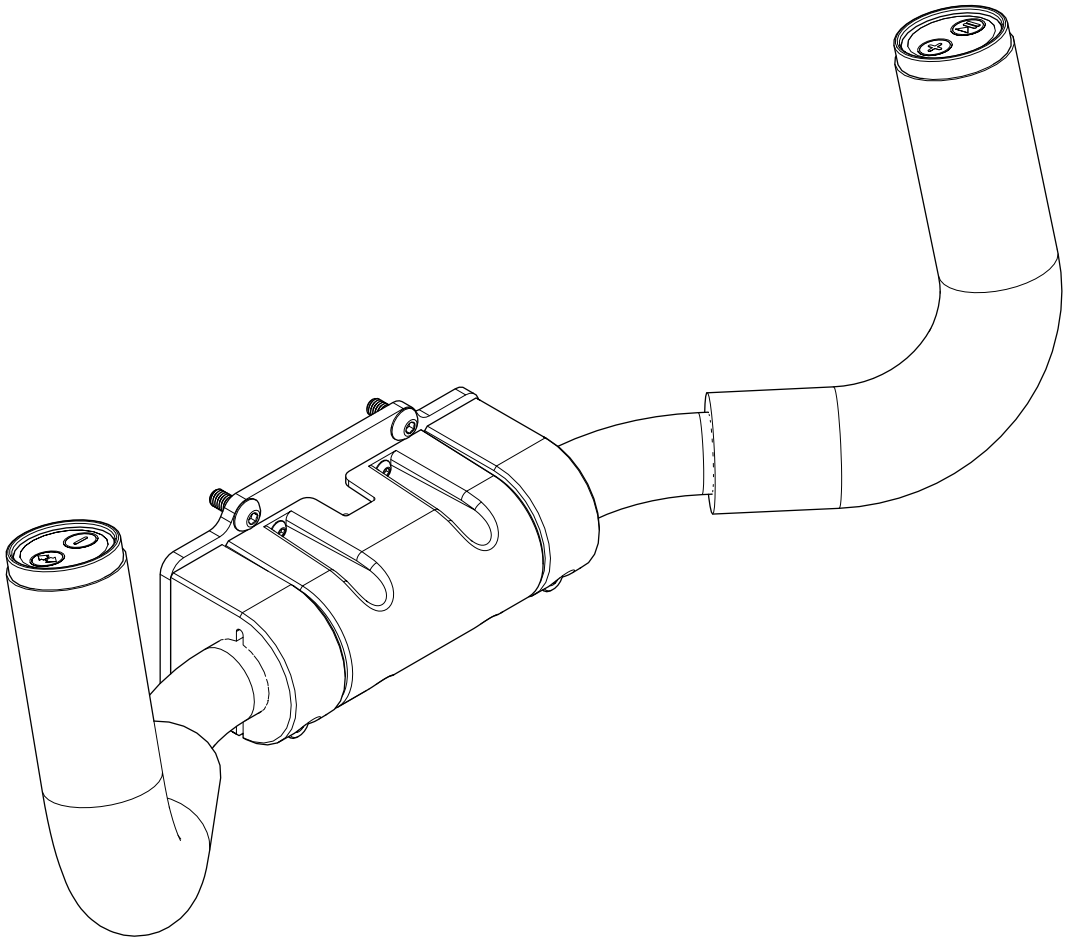
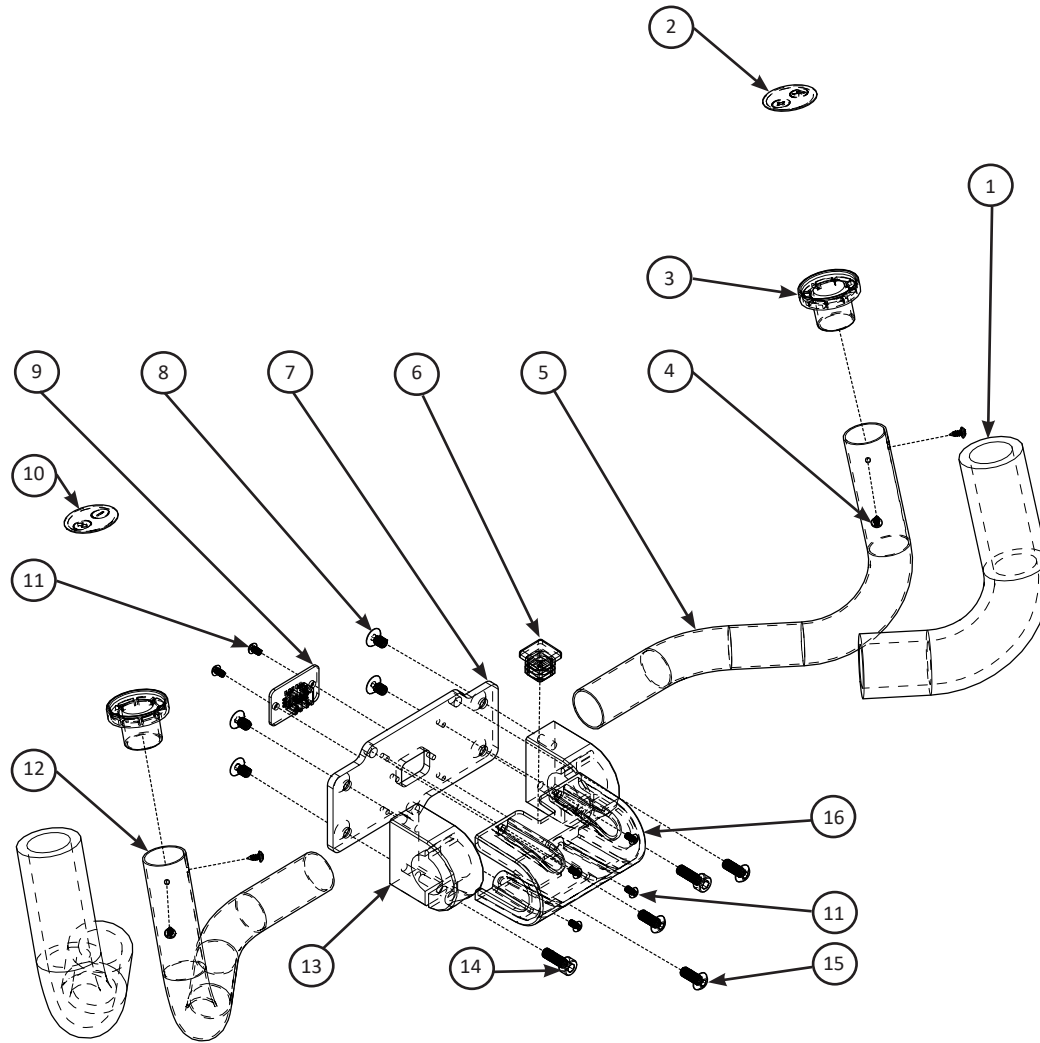


ECO	REV.	DESCRIPTION	DATE	APPROVED
IR	A	INITIAL RELEASE	08/31/20	GHS
NA	B	Corrected switch overlay from oval to circles	09/30/20	GHS



COMPANY NAME:	BABY LOCK
DRAWING NAME:	QM29421 - GALLANT REAR HANDLE BAR

ECO	REV.	DESCRIPTION	DATE	APPROVED
IR	A	INITIAL RELEASE	08/31/20	GHS
NA	B	Corrected switch overlay from oval to circles and corrected left to right on overlays and tubing.	09/30/20	GHS



ITEM	PART #	DESCRIPTION	QTY
1	QM11502	FOAM GRIP 14"	2
2	QM23104-07	SW & OVERLAY RIGHT HB GALLANT	1
3	QM13289	SWITCH CAP	2
4	QM10484	SCREW-#4X1/4 PHP SM ZN	4
5	QM11038	TUBING-RIGHT REAR 15"	1
6	QM10031	END PLUG-5/8" SQUARE	1
7	QM11029	REAR HB BRACKET GALLANT	1
8	QM11514	SCREW- M5X8 SKF ZN	4
9	QM20068	BOARD-REAR HB SIDE GALLANT	1
10	QM23104-08	SW & OVERLAY LEFT HB GALLANT	1
11	QM13273	SCREW-M3X5 PHP ZN	6
12	QM11037	TUBING-LEFT REAR 15"	1
13	QM10004	CLAMP HANDLE TUBE OPP	2
14	QM10176	SCREW-M5X14 SKC ZN	2
15	QM12017	SCREW-M5X12 SKB ZN	3
16	QM13119	COVER-HB CABLE	1
17	QM23013-01	CABLE- SWITCH TO BOARD*NS	2

NOTES:

1. Item 17, Not Shown.

COMPANY NAME:	BABY LOCK
DRAWING NAME:	QM29422 - GALLANT REAR HANDLE BAR