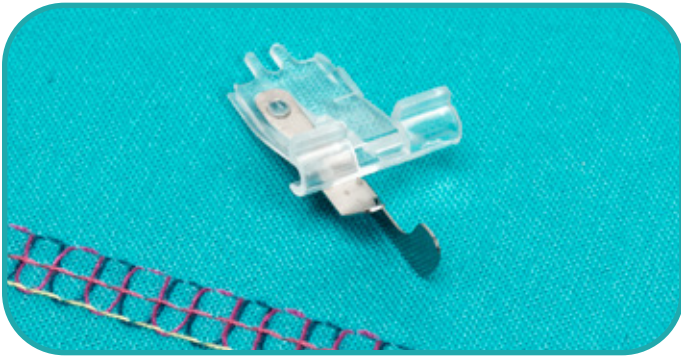


Stitch in the Ditch Micro Insert Feet (Center, Right, Left) BLP6-SDFEET

With three insert feet to select from, adding the Creative Cover Stitch to any project is a dream. The position of the guide makes stitching in a seam or along a fabric edge a breeze. Experience perfect alignment while creating a professional looking seam.



**Center Stitch in the Ditch
Micro Insert Foot**

Machine Settings:

Stitch Type:	Triple Cover Stitch and Cover Stitch Wide
Needle Position(s):	C1, C2 & C3 (Triple) and C1, C3 (Wide)
Stitch Length:	4.0-2.0 with overlock thread in the needles, looper, and wipers. 4.0 – 2.5 with overlock thread in the needles, and looper and texturized polyester/nylon thread in the wipers.
Differential Feed:	N
Speed Selector:	Medium
Needle Stop Position:	Up for threading and Up or Down when stitching
Wiper(s):	Right & Left (both wipers) or Left or Right (one wiper)
Presser Foot Pressure:	Standard

Supplies:

Needles: 2 or 3 spools of overlock thread

Chain Looper: 1 spool overlock thread

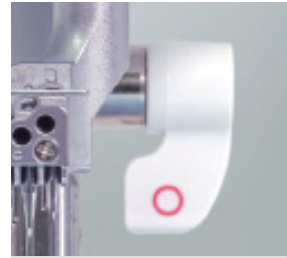
Needles: ELx705CF or ELx705 serger needles size 90/14 or 80/12

Wiper(s): 2 spools of overlock thread, texturized polyester/nylon, or decorative thread (12wt. cotton or rayon thread for example).

Optional: ¼” double-sided fusible web/tape, or ¼” basting tape (suggested for an overlapped seam)

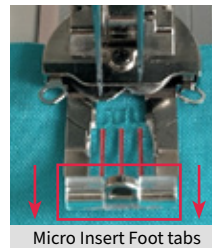
Changing the Micro Insert Foot:

We suggest removing and replacing a micro insert foot with the presser foot in the down position.

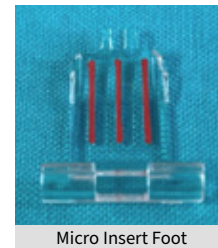


Wiper Position Lever - Down

1. Place the Wiper Positioning Lever down (the red circle should be visible). This will place the wipers in the open position.
2. Place fabric under the presser foot and lower the presser foot. Remove the micro insert foot by grasping the tabs on each side of the wiper threading guide (located at the toe of the presser foot) and gently pull the micro insert foot toward you. Place the micro insert foot in the accessory compartment.



Micro Insert Foot tabs



Micro Insert Foot

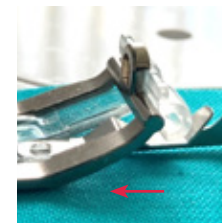


Micro Insert Foot removed

3. With the presser foot still in the down position place the Center Stitch in the Ditch Micro Insert Foot under the presser foot keeping the toe or front of the micro insert foot against the fabric and the back of the micro insert foot (end with the tabs) at a slight upward angle.



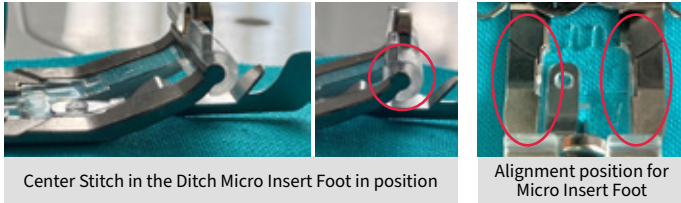
Center Stitch in the Ditch
Micro Insert Foot



Positioning the Center
Stitch in the Ditch Micro
Insert Foot

4. As the micro insert foot gets closer to the back of the presser foot the edges (left and right) will slide into the grooves on the underside of the presser foot. Once the micro insert foot reaches the end of the guide, near the needles, the micro insert foot will be in position placing the tabs at the toe of the presser foot. Slide your finger across the micro insert foot, where the insert and presser foot meet, the area should feel smooth. This step helps determine if the micro insert foot is in alignment with the presser foot.

Note: If the micro insert foot is in the correct position, it will slide and click into position, if not remove the micro insert foot and reposition it. When positioning the micro insert foot, it may be necessary to lift the guide/blade (slightly) until the micro insert foot is in position.

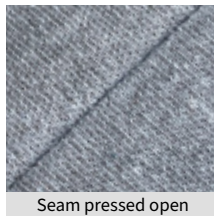


Instructions:

1. Following threading and set-up information in the Quick Reference Threading Guide and the Instruction and Reference Guide for the selected stitch, Triple or Wide Cover, thread the machine.
2. To finish the outside of a seam, for example, a side seam. The following are ways to prepare the seam for this micro insert foot.

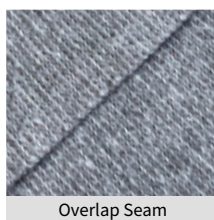
Option 1: Seam Pressed Open

Seam construction can be either a chain stitch or a straight stitch. Stitch and press open.

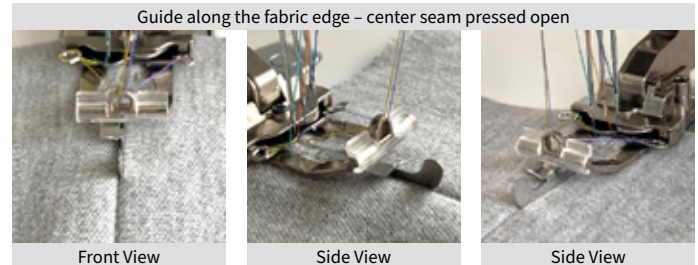


Option 2: Overlap Seam

Mark seam allowance on the fabric piece that is the back or underside. Overlap the front or top fabric piece aligning the fabric edge with the marking on the underside fabric piece. This will create an overlap seam (fabric pieces on top of one another with the fabric edges exposed). To secure the seam place a ¼” wide strip of double-sided basting tape or double-sided fusible tape between the two layers. For the fusible tape application fuse the fabric pieces (test the iron setting with the fabric type) together. The two fabric pieces can also be stitched together using the chain stitch with a stitch length of 4.0.



3. With the micro insert foot in place and the machine threaded place fabric under the presser foot (right side up) aligning the guide/blade on the micro insert foot with either the seam or the fabric edge. This will be determined by the selected seam type. If using the Triple Cover Stitch the C2 needle is along the seam or fabric edge with the C1 needle in the fabric on the left and the C3 needle in the fabric on the right. When using the Cover Wide the C1 needle will be on the left fabric piece with the C3 needle on the right fabric piece. The stitch will span the seam or overlap.

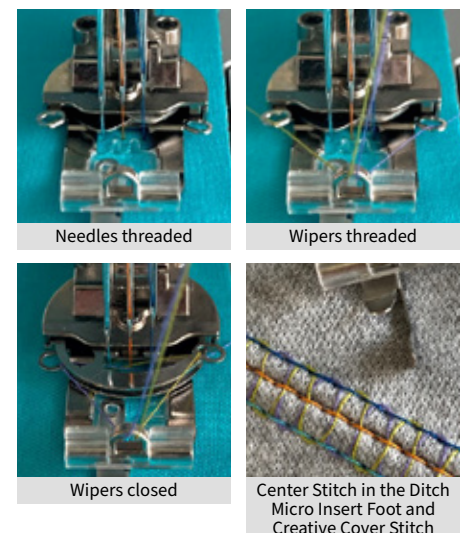


4. Thread either both or one wiper following pages 25 and 26 in the Instruction and Reference Guide. With the wiper(s) threaded place the Wiper Positioning Lever Up (horizontal position) to engage the wipers (page 24, step 1/photo A in the Instruction and Reference Guide). With the wiper thread tails in position, use the needle positioning button to take one or two stitches. With the needles in the down position either trim the wiper thread tails or bring them under and behind the presser foot. Refer to pages 63 step 2 (B/C/D photos) and 27 step 3 (A/B photos) in the Instruction and Reference Manual to view the steps for each method. Continue stitching and stitch off the fabric edge leaving a 2 ½” thread tail. Cut the thread tail about 1” from the fabric edge leaving a 1 ½” thread tail behind the presser foot.

Note: To create the look seen in activewear use overlock thread in the needles and chain looper and texturized polyester/nylon in the wiper(s). We suggest creating a stitch sample using the texturized polyester/nylon thread in one wiper and both wipers with various stitch length settings to determine the desired look. Consider using the texturized polyester/nylon in the chain looper for additional stretch. When using decorative threads in the wipers the Creative Cover Stitch can be used as a decorative accent to any seam.

5. Following the above instructions finish additional seams.

Tip: when working with stretch fabrics, adjust the stitch length to a short length for maximum stretch. Depending on the fabric and threads used the shortest stitch length will be 2.5 – 2.0.

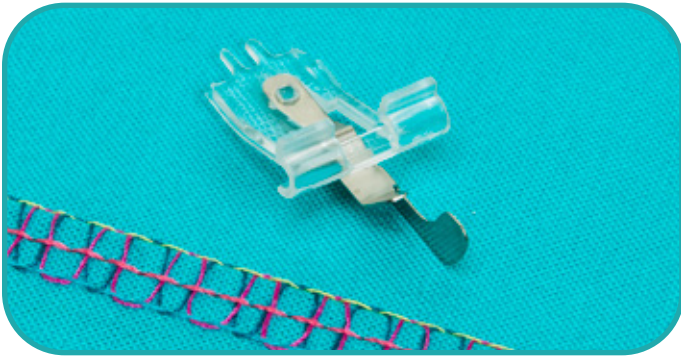


FOR THE LOVE OF SEWING

www.BabyLock.com

Stitch in the Ditch Micro Insert Feet (Center, Right, Left) BLP6-SDFEET

With three insert feet to select from, adding the Creative Cover Stitch to any project is a dream. The position of the guide makes stitching in a seam or along a fabric edge a breeze. Experience perfect alignment while creating a professional looking seam.



**Right Stitch in the Ditch
Micro Insert Foot**

Changing the Micro Insert Foot:

We suggest removing and replacing a micro insert foot with the presser foot in the down position.



Wiper Position Lever - Down

1. Place the Wiper Positioning Lever down (the red circle should be visible). This will place the wipers in the open position.
2. Place fabric under the presser foot and lower the presser foot. Remove the micro insert foot by grasping the tabs on each side of the wiper threading guide (located at the toe of the presser foot) and gently pull the micro insert foot toward you. Place the micro insert foot in the accessory compartment.

Machine Settings:

Stitch Type:	Triple Cover Stitch and Cover Stitch Wide
Needle Position(s):	C1, C2 & C3 (Triple) and C1, C3 (Wide)
Stitch Length:	4.0-2.0 with overlock thread in the needles, looper, and wipers. 4.0 – 2.5 with overlock thread in the needles, and looper and texturized polyester/nylon thread in the wipers.
Differential Feed:	N
Speed Selector:	Medium
Needle Stop Position:	Up for threading and Up or Down when stitching
Wiper(s):	Right & Left (both wipers) or Left or Right (one wiper)
Presser Foot Pressure:	Standard



3. With the presser foot still in the down position place the Right Stitch in the Ditch Micro Insert Foot under the presser foot keeping the toe or front of the micro insert foot against the fabric and the back of the micro insert foot (end with the tabs) at a slight upward angle.

Supplies:

Needles: 2 or 3 spools of overlock thread

Chain Looper: 1 spool overlock thread

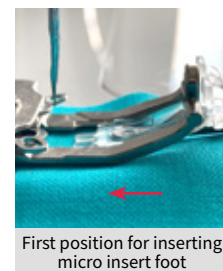
Needles: ELx705CF or ELx705 serger needles size 90/14 or 80/12

Wiper(s): 2 spools of overlock thread, texturized polyester/nylon, or decorative thread (12wt. cotton or rayon thread for example).

Optional: ¼” double-sided fusible web/tape, or ¼” basting tape (suggested for an overlapped seam)



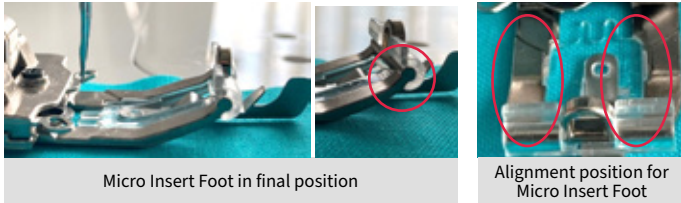
Right Stitch in the Ditch
Micro Insert Foot



First position for inserting
micro insert foot

4. As the micro insert foot gets closer to the back of the presser foot the edges (left and right) will slide into the grooves on the underside of the presser foot. Once the micro insert foot reaches the end of the guide, near the needles, the micro insert foot will be in position placing the tabs at the toe of the presser foot. Slide your finger across the micro insert foot, where the insert and presser foot meet, the area should feel smooth. This step helps determine if the micro insert foot is in alignment with the presser foot.

Note: If the micro insert foot is in the correct position, it will slide and click into position, if not remove the micro insert foot and reposition it. When positioning the micro insert foot, it may be necessary to lift the guide/blade (slightly) until the micro insert foot is in position.

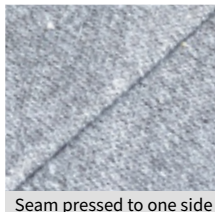


Instructions:

1. Following threading and set-up information in the Quick Reference Threading Guide and the Instruction and Reference Guide for the selected stitch, Triple or Wide Cover, thread the machine.
2. To finish the outside of a seam, for example, a side seam. The following are ways to prepare the seam for this micro insert foot.

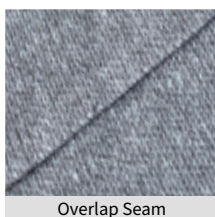
Option 1: Seam Pressed to One Side

The finished seam should be no less than ¼” in width. Seam construction – overlock, chain stitch, or straight stitch. Press seam allowance on both sides to set and then to one side.

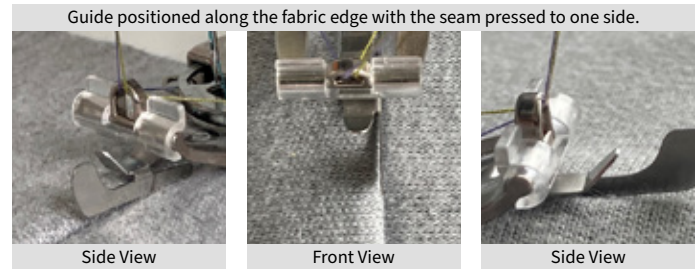


Option 2: Overlap Seam

Mark seam allowance on the fabric piece that is the back or underside. Overlap the front or top fabric piece aligning the fabric edge with the marking on the underside fabric piece. This will create an overlap seam (fabric pieces on top of one another with the fabric edges exposed). To secure the seam place a ¼” wide strip of double-sided basting tape or double-sided fusible tape between the two layers. For the fusible tape application fuse the fabric pieces (test the iron setting with the fabric type) together. The two fabric pieces can also be stitched together using the chain stitch with a stitch length of 4.0.



3. With the micro insert foot in place and the machine threaded place fabric under the presser foot (right side up) aligning the guide/blade on the micro insert foot with either the seam or the fabric edge. If using the Triple Cover Stitch the C3 needle is along the seam or fabric edge (to the right) with the C1 and C2 needle (to the left) and in the seam or overlap. When using the Cover Wide the C3 needle will be along the seam or fabric edge (to the right) with the C3 needle (to the left) and in the seam or overlap. The Cover Wide stitch will span the seam or overlap.

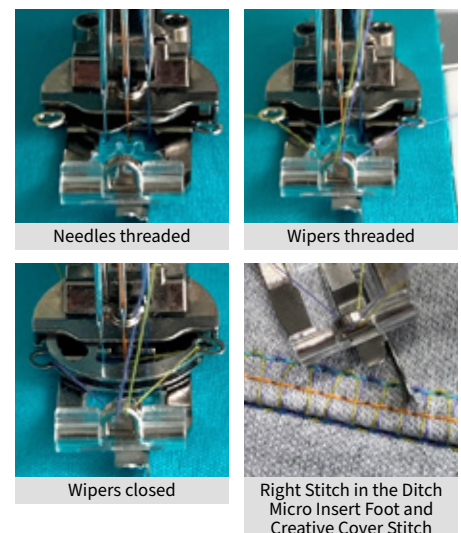


4. Thread either both or one wiper following pages 25 and 26 in the Instruction and Reference Guide. With the wiper(s) threaded place the Wiper Positioning Lever Up (horizontal position) to engage the wipers (page 24, step 1/photo A in the Instruction and Reference Guide). With the wiper thread tails in position, use the needle positioning button to take one or two stitches. With the needles in the down position either trim the wiper thread tails or bring them under and behind the presser foot. Refer to pages 63 step 2 (B/C/D photos) and 27 step 3 (A/B photos) in the Instruction and Reference Manual to view the steps for each method. Continue stitching and stitch off the fabric leaving a 2 ½” thread tail. Cut the thread tail about 1” from the fabric edge leaving a 1 ½” thread tail behind the presser foot.

Note: To create the look seen in activewear use overlock thread in the needles and chain looper and texturized polyester/nylon in the wiper(s). We suggest creating a stitch sample using the texturized polyester/nylon thread in one wiper and both wipers with various stitch length settings to determine the desired look. Consider using the texturized polyester/nylon in the chain looper for additional stretch. When using decorative threads in the wipers the Creative Cover Stitch can be used as a decorative accent to any seam.

5. Following the above instructions finish any other seams.

Tip: when working with stretch fabrics, adjust the stitch length to a short length for maximum stretch. Depending on the fabric and threads used the shortest stitch length will be 2.5 – 2.0.

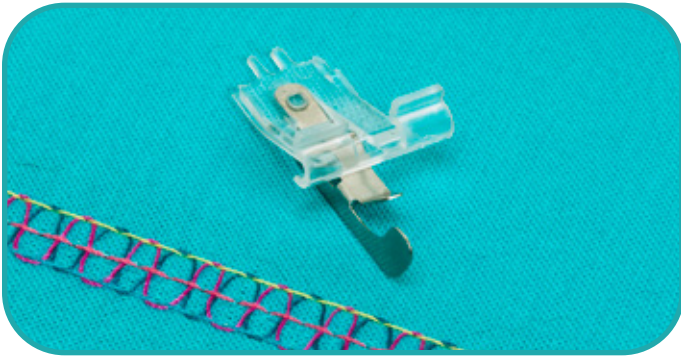


FOR THE LOVE OF SEWING

www.BabyLock.com

Stitch in the Ditch Micro Insert Feet (Center, Right, Left) BLP6-SDFEET

With three insert feet to select from, adding the Creative Cover Stitch to any project is a dream. The position of the guide makes stitching in a seam or along a fabric edge a breeze. Experience perfect alignment while creating a professional looking seam.



Left Stitch in the Ditch
Micro Insert Foot

Machine Settings:

Stitch Type:	Triple Cover Stitch and Cover Stitch Wide
Needle Position(s):	C1, C2 & C3 (Triple) and C1, C3 (Wide)
Stitch Length:	4.0-2.0 with overlock thread in the needles, looper, and wipers. 4.0 – 2.5 with overlock thread in the needles, and looper and texturized polyester/nylon thread in the wipers.
Differential Feed:	N
Speed Selector:	Medium
Needle Stop Position:	Up for threading and Up or Down when stitching
Wiper(s):	Right & Left (both wipers) or Left or Right (one wiper)
Presser Foot Pressure:	Standard

Supplies:

Needles: 2 or 3 spools of overlock thread

Chain Looper: 1 spool overlock thread

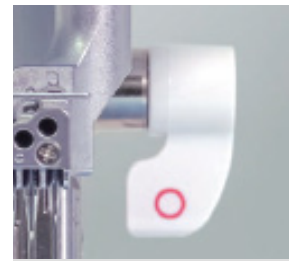
Needles: ELx705CF or ELx705 serger needles size 90/14 or 80/12

Wiper(s): 2 spools of overlock thread, texturized polyester/nylon, or decorative thread (12wt. cotton or rayon thread for example).

Optional: ¼” double-sided fusible web/tape, or ¼” basting tape (suggested for an overlapped seam)

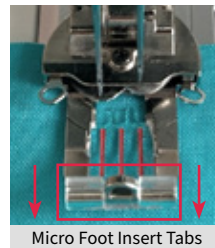
Changing the Micro Insert Foot:

We suggest removing and replacing a micro insert foot with the presser foot in the down position.

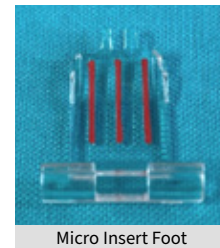


Wiper Position Lever - Down

1. Place the Wiper Positioning Lever down (the red circle should be visible). This will place the wipers in the open position.
2. Place fabric under the presser foot and lower the presser foot. Remove the micro insert foot by grasping the tabs on each side of the wiper threading guide (located at the toe of the presser foot) and gently pull the micro insert foot toward you. Place the micro insert foot in the accessory compartment.



Micro Foot Insert Tabs

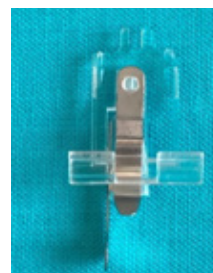


Micro Insert Foot

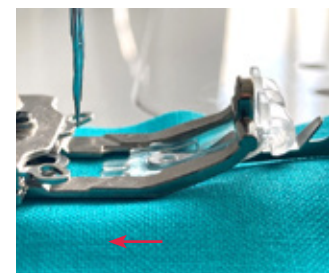


Micro Insert Foot removed

3. With the presser foot still in the down position place the Left Stitch in the Ditch Micro Insert Foot under the presser foot keeping the toe or front of the micro insert foot against the fabric and the back of the micro insert foot (end with the tabs) at a slight upward angle.



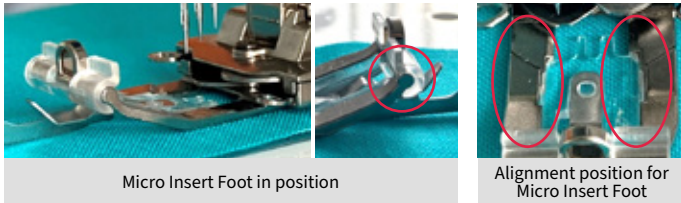
Left Stitch in the Ditch
Micro Insert Foot



First position for inserting
micro insert foot

4. As the micro insert foot gets closer to the back of the presser foot the edges (left and right) will slide into the grooves on the underside of the presser foot. Once the micro insert foot reaches the end of the guide, near the needles, the micro insert foot will be in position placing the tabs at the toe of the presser foot. Slide your finger across the micro insert foot, where the insert and presser foot meet, the area should feel smooth. This step helps determine if the micro insert foot is in alignment with the presser foot.

Note: If the micro insert foot is in the correct position, it will slide and click into position, if not remove the micro insert foot and reposition it. When positioning the micro insert foot, it may be necessary to lift the guide/blade (slightly) until the micro insert foot is in position.



Micro Insert Foot in position

Alignment position for Micro Insert Foot

Instructions:

1. Following threading and set-up information in the Quick Reference Threading Guide and the Instruction and Reference Guide for the selected stitch, Triple or Wide Cover, thread the machine.
2. To finish the outside of a seam, for example, a side seam. The following are ways to prepare the seam for this micro insert foot.

Option 1: Seam Pressed to One Side

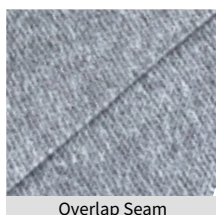
The finished seam should be no less than ¼” in width. Seam construction – overlock, chain stitch, or straight stitch. Press seam allowance on both sides to set and then to one side.



Seam pressed to one side

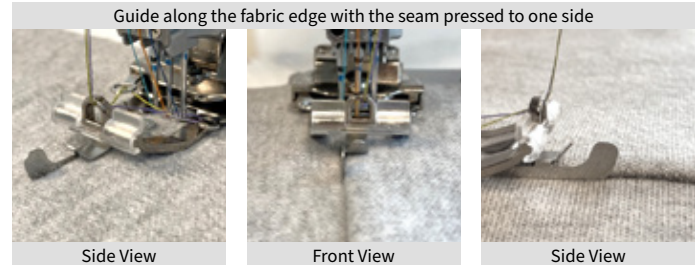
Option 2: Overlap Seam

Mark seam allowance on the fabric piece that is the back or underside. Overlap the front or top fabric piece aligning the fabric edge with the marking on the underside fabric piece. This will create an overlap seam (fabric pieces on top of one another with the fabric edges exposed). To secure the seam place a ¼” wide strip of double-sided basting tape or double-sided fusible tape between the two layers. For the fusible tape application fuse the fabric pieces (test the iron setting with the fabric type) together. The two fabric pieces can also be stitched together using the chain stitch with a stitch length of 4.0.



Overlap Seam

3. With the micro insert foot in place and the machine threaded place fabric under the presser foot (right side up) aligning the guide/blade on the micro insert foot with either the seam or the fabric edge. If using the Triple Cover Stitch the C3 needle is along the seam or fabric edge (to the right) with the C1 and C2 needle (to the left) and in the seam or overlap. When using the Cover Wide the C3 needle will be along the seam or fabric edge (to the right) with the C3 needle (to the left) and in the seam or overlap. The Cover Wide stitch will span the seam or overlap.



Guide along the fabric edge with the seam pressed to one side

Side View

Front View

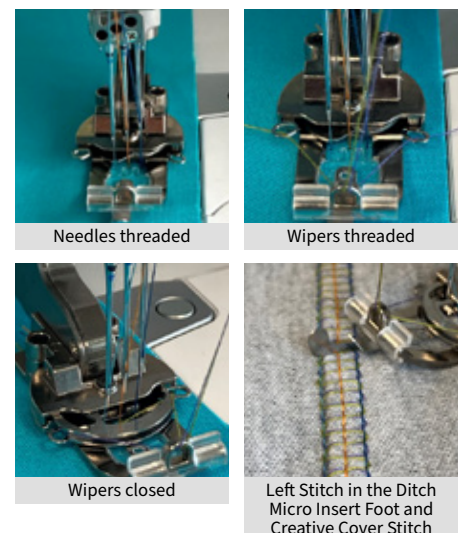
Side View

4. Thread either both or one wiper following pages 25 and 26 in the Instruction and Reference Guide. With the wiper(s) threaded place the Wiper Positioning Lever Up (horizontal position) to engage the wipers (page 24, step 1/photo A in the Instruction and Reference Guide). With the wiper thread tails in position, use the needle positioning button to take one or two stitches. With the needles in the down position either trim the wiper thread tails or bring them under and behind the presser foot. Refer to pages 63 step 2 (B/C/D photos) and 27 step 3 (A/B photos) in the Instruction and Reference Manual to view the steps for each method. Continue stitching and stitch off the fabric leaving a 2 ½” thread tail. Cut the thread tail about 1” from the fabric edge leaving a 1 ½” thread tail behind the presser foot.

Note: to create the look seen in activewear use overlock thread in the needles and chain looper and texturized polyester/nylon in the wiper(s). We suggest creating a stitch sample using the texturized polyester/nylon thread in one wiper and both wipers with various stitch length settings to determine the desired look. Consider using the texturized polyester/nylon in the chain looper for additional stretch. When using decorative threads in the wipers the Creative Cover Stitch can be used as a decorative accent to any seam.

5. Following the above instructions finish any other seams.

Tip: when working with stretch fabrics, adjust the stitch length to a short length for maximum stretch. Depending on the fabric and threads used the shortest stitch length will be 2.5 – 2.0.



Needles threaded

Wipers threaded

Wipers closed

Left Stitch in the Ditch Micro Insert Foot and Creative Cover Stitch



FOR THE LOVE OF SEWING

www.BabyLock.com