

16 striking thread colors

0 thread changes

1,400 stitches per minute

20 personalized  
team uniforms

1 hobby evolving into  
a profitable career



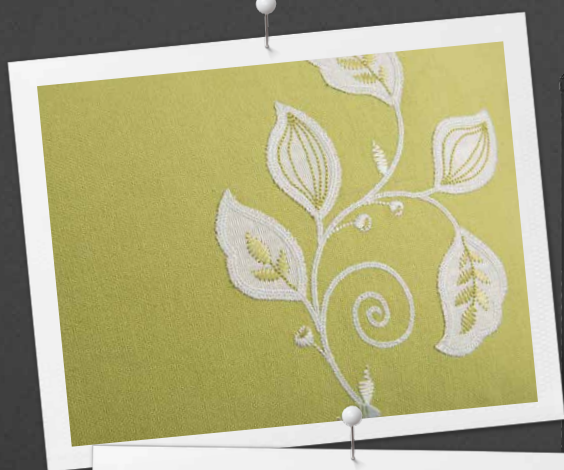
# The Perfect Partner for Home, Studio or Business

*Make it Personal—Keep it Professional*

With 16 needles, speeds of up to 1,400 stitches per minute (spm), automatic tension settings, and a narrow cylindrical arm—the BERNINA E 16 will complete the task like a pro—whether embroidering a jacket back or small pocket. Personalize team uniforms and caps, monogram stylish totes, commemorate a special occasion, use the Chenille technique for a special 3-D effect, or complete an elaborate embroidered quilt—the results will be everything you ever dreamed of.



Start embroidering quickly with the intuitive BERNINA Operating System; Icon driven and easy to use.





# BERNINA 16-Needle Embroidery

## *Embroidery Dreams Become Reality*

### **Go Pro**

With roots in the industrial world, BERNINA is excited to share with you the dream of faster, more professional and larger embroidery than ever before. The dream of 16-needle embroidery suitable for home, studio, or commercial use is now a reality. Whether you're new to machine embroidery or more experienced, you will appreciate the thought behind the details.

### **A Home Run**

From the intuitive user interface and the smallest cylindrical embroidery arm in the industry to the array of optional accessories, teaming up with the BERNINA E 16 is a winning proposition.



# Time-Saving Go Pro Features for Business, Studio or Home

*High-Speed Embroidery and True Commercial Quality*

Complete more embroidery projects confidently and more successfully with 1,400 spm and the quality of a true commercial system.

## Go Pro Tension System

This unique system ensures threads are fed smoothly and with automatic tension adjustments, for the same perfect quality on every sew-out. Embroider confidently, knowing each stitch-out will be as beautiful as you envision.

## Laser Alignment

The ultraprecise laser registration assures accurate design placement.

## Extra Large Embroidery Field 400×350 mm

From jacket backs to embroidered quilt blocks, your BERNINA E 16 will handle large projects with ease.

## BERNINA Rotary Hook

Speed, precision, and a high-performance thread trimmer are the benefits of the BERNINA rotary hook system. Compatible with convenient pre-wound bobbins for even more time saving.

## 16 Needles

Complete more embroidery more quickly by eliminating the time spent re-threading for each color change. Less time spent managing the embroidery process means more time for creativity and more custom jobs completed.

## Industry's Smallest Cylindrical Lower Arm

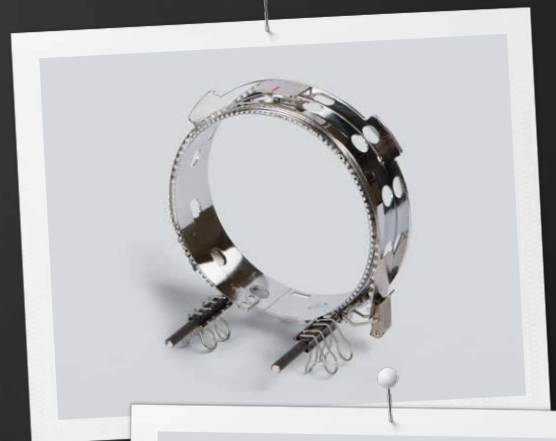
Your BERNINA E 16 handles all of your embroidery needs, large and small. Slide baby items, T-shirts, pockets, or tote bags easily over the narrow arm, eliminating the need to open seams or deconstruct the item prior to embroidering.





## Go Pro System

Your BERNINA E 16 includes an assortment of standard accessories and time-saving features. When your creativity or growing business is ready for more, the Go Pro system has you covered. With the optional cap driver and wide frame, customizing caps is a breeze, whether you need one or twenty. The narrow cylindrical arm combined with the unique pocket frames are perfect for stitching in tight spaces. Discover unlimited embroidery possibilities with the addition of BERNINA Embroidery Software 7. Create custom monograms, edit existing designs, or digitize your own designs.



# BERNINA E 16 Features

- 16 needles
- High-speed embroidery up to 1,400 spm
- True commercial embroidery system
- Extra large embroidery field 400 x 350 mm
- Patented narrow cylindrical lower arm
- Smallest cylindrical lower arm in the industry
- Standard hoops (width x height)
  - 36 x 30 cm
  - 44 x 30 cm
  - 12 cm round
  - 15 cm round
- Go Pro operator's kit
- Go Pro tension system (fabric based)
- Go Pro design library of 1,000 designs
- Go Pro BERNINA hook system
- Go Pro automatic thread trim
- Adjustable presser foot height
- Appliqué command
- Laser alignment
- Rotation 1, 90, 180

- Move to position
- Move to color
- Move to stitch
- Stock colors
- Bright LEDs
- Network up to six machines
- Extra large cap embroidery field (36 x 8.2 cm)
  - Cap hoops and driver optional
- Specialty frames and hoops available
  - Three sizes of pocket frames
- Compatible with BERNINA Embroidery Software 7 (optional)
- Compatible with BERNINA Exclusive Design Collections (optional)

## Highlights:

- 16 colors/16 needles
- Speed up to 1,400 spm
- Automatic thread trim
- Fancy stitches/micro chenille
- Patented Acti Feed™ system
- Industry's largest embroidery field for caps
- Compatible with .ART format



Image courtesy of Sarah Vedeler.



**BERNINA**