

Quilter's Creative *Touch* 6



Software Registration & Use



Contents

Software Tier Overview	4
QCT6 Edge-to-Edge	4
QCT6 Plus	4
QCT6 Pro	5
Start Here: Registering the Software	6
Task 1: Optimize Your Windows Settings.....	7
Task 2: Check for Windows Updates.....	10
Task 3: Install the QCT6 Software onto Your Tablet	12
Task 4: Install QCT6 Software Drivers.....	17
Task 5: Register QCT6 Software	24
Task 6: Activate Your Gold Card Trial (QCT6 Pro Users Only)	29
Using the Software	32
Getting Started with QCT6 Plus and Pro.....	33
Accessing Help	33
Troubleshooting Common Issues.....	34
Getting Started with QCT6 Edge-to-Edge	36
Using the Buttons	36
Accessing Help	39
Troubleshooting Common Issues.....	44
Explanation of Messages and Pop-ups	47
QCT6 Edge-to-Edge: Continuing an Interrupted Row of Stitching.....	58
Edge-to-Edge: Manually Placing Your First Row of Designs.....	65
Appendix	67
Connecting to the Internet.....	68
Additional Resources	70
Glossary	72

Software Tier Overview

Use Quilter's Creative Touch 6 to select and stitch out quilting designs. Available features and placement methods depend upon the tier of the software you're using.

QCT6 Edge-to-Edge

The minimalist tier of the software, containing:

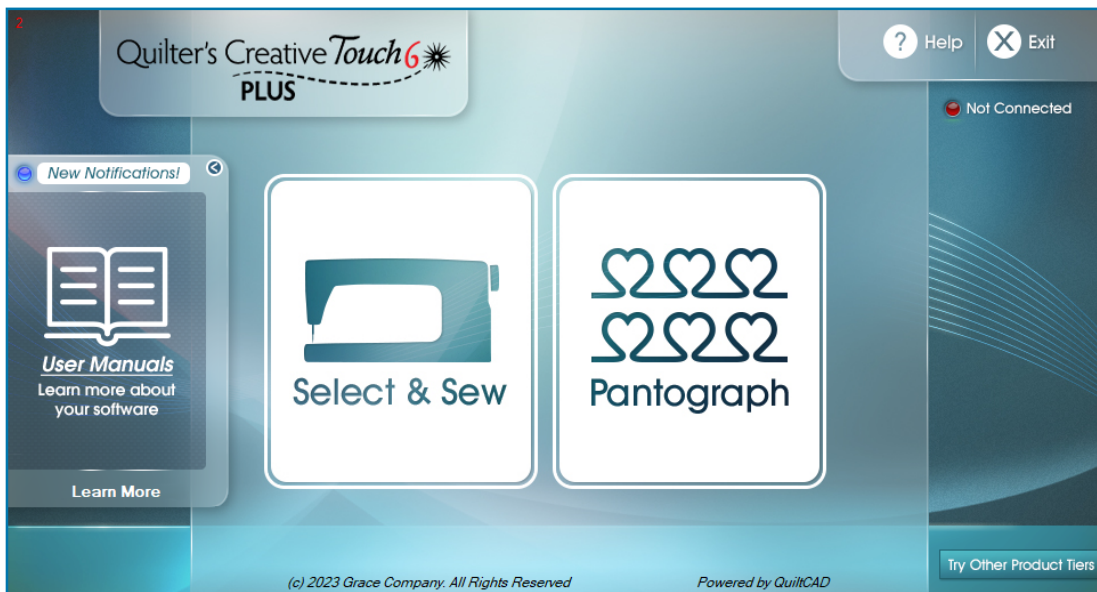
- **Edge-to-Edge:** Select a single design and stitch it across the quilt.



QCT6 Plus

The middle tier of the software, containing:

- **Select and Sew:** Choose a single block design and stitch it out.
- **Pantograph:** Stitch out two rows of a selected design.



QCT6 Pro

The highest tier of the software, containing:

- **Select and Sew:** Choose a single block design and stitch it out.
- **Pantograph (upgraded):** Set up an entire quilt with a selected design.
- **PatternCAD:** Create custom designs.
- **QuiltCAD:** Set up an entire quilt with multiple designs, including blocks.
- **Record:** Tracks the movement of the machine so it can be repeated later when stitching. This means any free-motion or tracing done while recording can be added to your design library.



QCT6 Gold Access: A subscription available for QCT6 Pro users to purchase for more features. See page 29 for details.



Start Here: Registering the Software

Follow the registration instructions after you have fully assembled your quilting frame, machine and Quilter's Creative Touch (formerly called QuiltMotion) hardware.

Task 1: Optimize Your Windows Settings	page 7
Task 2: Check for Windows Updates	page 10
Task 3: Install the QCT6 Software onto Your Tablet	page 12
Task 4: Install QCT6 Software Drivers	page 17
Task 5: Register QCT6 Software	page 24
Task 6: Activate Your Gold Card Trial (QCT6 Pro Users Only)	page 29

Task 1: Optimize Your Windows Settings

Parts & Tools Needed:

Your Tablet

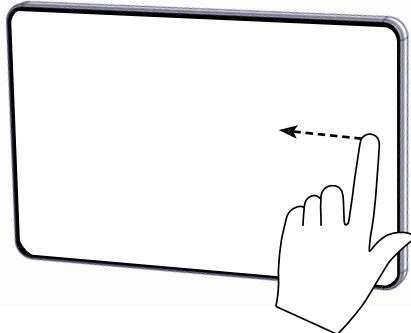


Note: The images shown are for Windows 10. Your screens might look slightly different if you're running a different version of Windows.

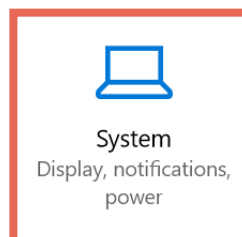
Instructions

Optimizing your Windows settings ensures the quilting software functions well without unwanted interruptions, such as the tablet going to sleep during the middle of a quilting session. Take the following steps:

- 1 Check that your tablet is connected to the Internet. If it is not, follow the steps in "Connecting to the Internet" on page 68. Also confirm your tablet is set to the correct time and your primary language is set to English.
- 2 From the right side of your tablet, swipe in to open the Action Center. Tap **All Settings**.

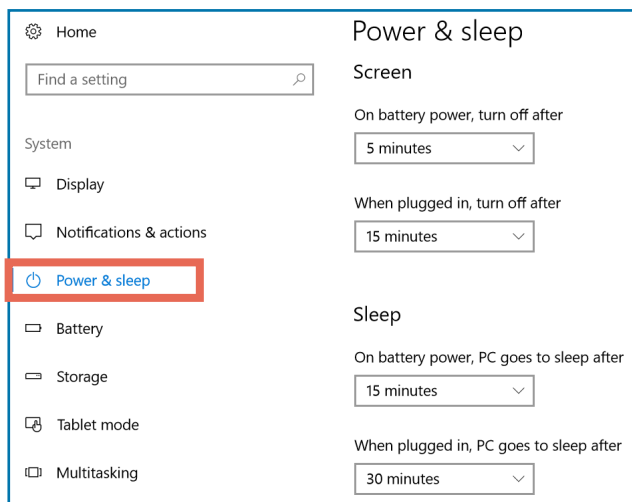


- 3 Press **System**.

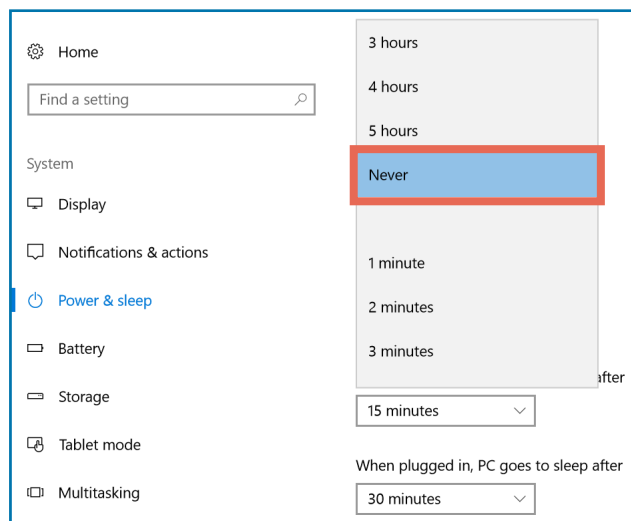
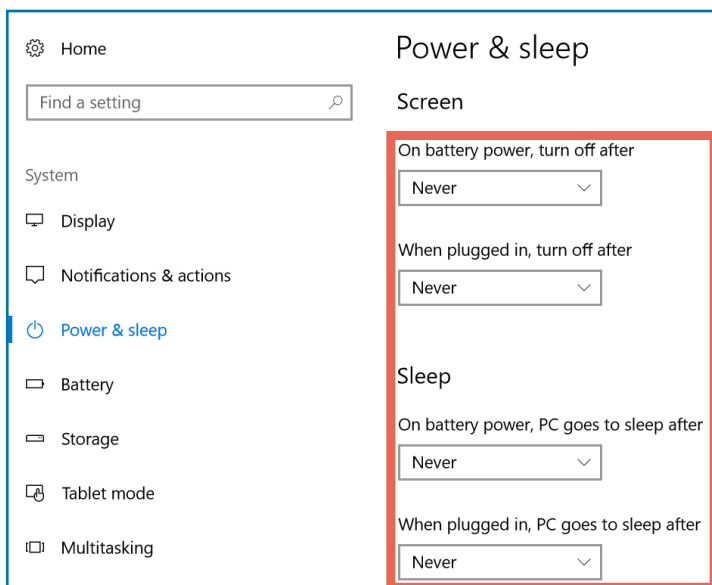


Task 1: Optimize Your Windows Settings (continued)

4 Open **Power & Sleep**.



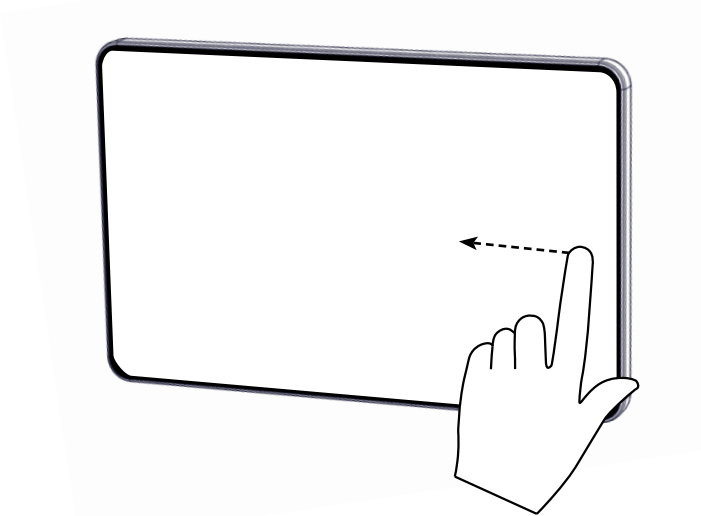
5 On every drop-down in Power & Sleep, choose **Never**. This prevents your tablet from going to sleep during a quilting session.



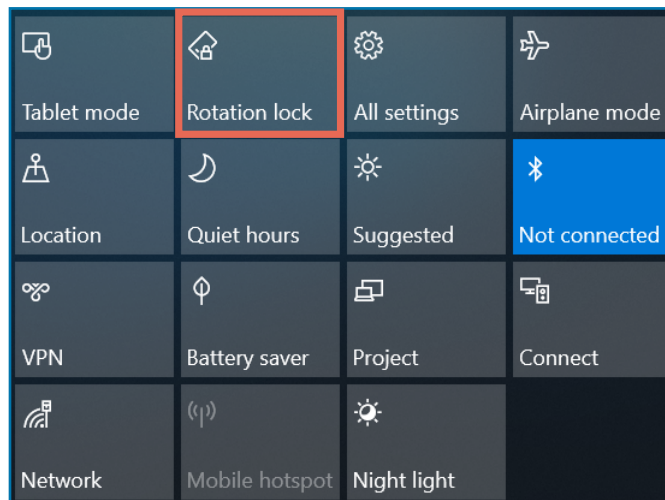
- **Note:** While these settings are set to **Never**, you will need to turn your tablet off manually if you would like it to shut down or go to sleep.

Task 1: Optimize Your Windows Settings (continued)

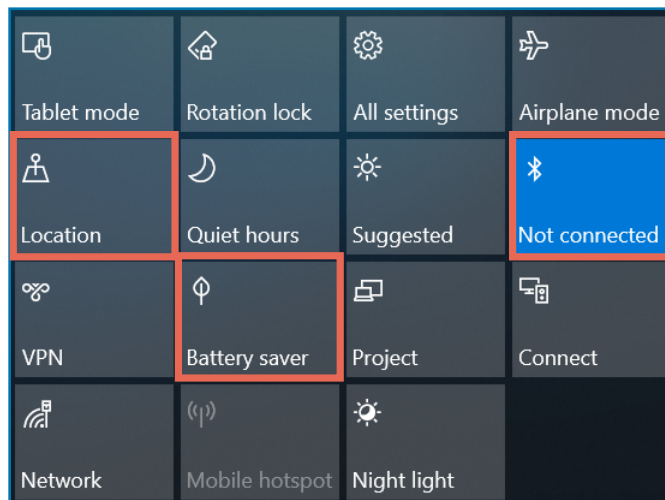
6 Swipe in from the right again and open the Action Center.



7 Hold your tablet in landscape orientation (so the long sides are on top and bottom) and activate **Rotation Lock**. This is the best orientation to use with QCT6.



8 If **Location** or **Battery Saver** are highlighted, then tap them to deselect them. Turn off **Bluetooth** unless you are using a Bluetooth device (mouse, stylus, keyboard, headphones, etc.).



Task 2: Check for Windows Updates

Parts & Tools Needed:

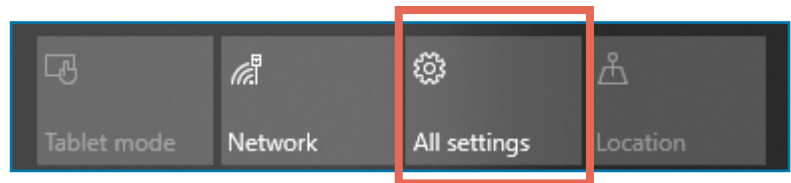
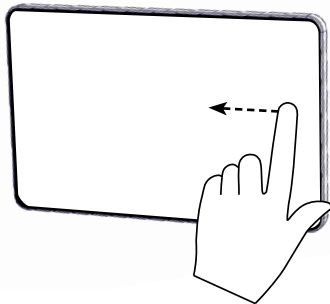
Your Tablet



Instructions

Your Windows tablet must be fully up to date before installing Quilter's Creative Touch 6. Take the following steps to update your tablet. Also follow these steps to check for and install updates at least once a month.

- 1 Check that **your tablet** is connected to the Internet. If it is not, follow the steps in "Connecting to the Internet" on page 68.
- 2 Swipe in from the right and tap **All Settings**.

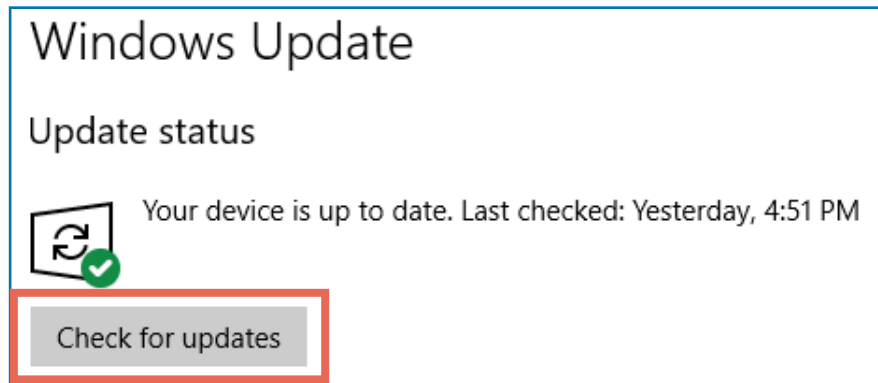


- 3 Open **Updates & Security**.



Task 2: Check for Windows Updates (continued)

- 4 Tap **Check for Updates**.

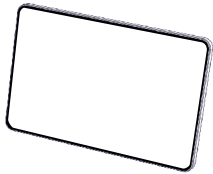


- 5 Follow the on-screen instructions to install the updates. The tablet might restart several times. Depending on how long it's been since the last update, the process could take several hours. Continue this process until the Windows Update status reads: **"Your device is up to date. Last checked [today's date]."**

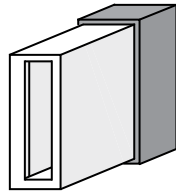
Task 3: Install the QCT6 Software onto Your Tablet

Parts & Tools Needed:

Your Tablet (with Internet connection)



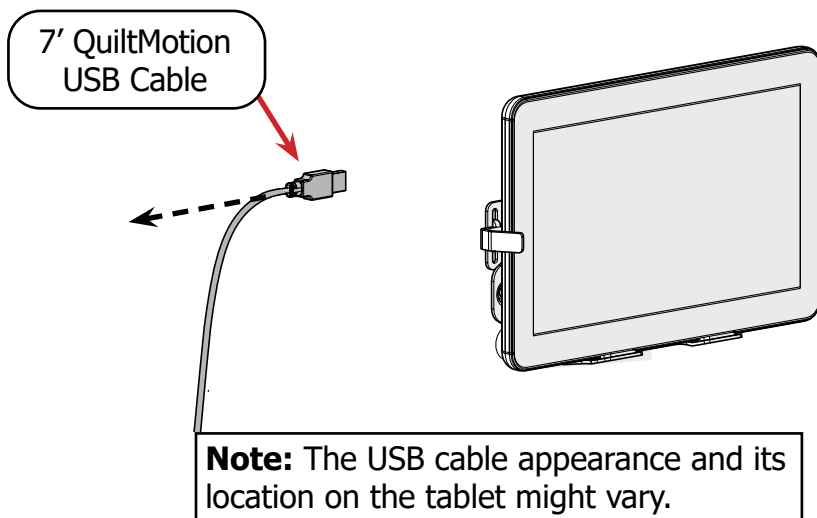
Software Thumb Drive



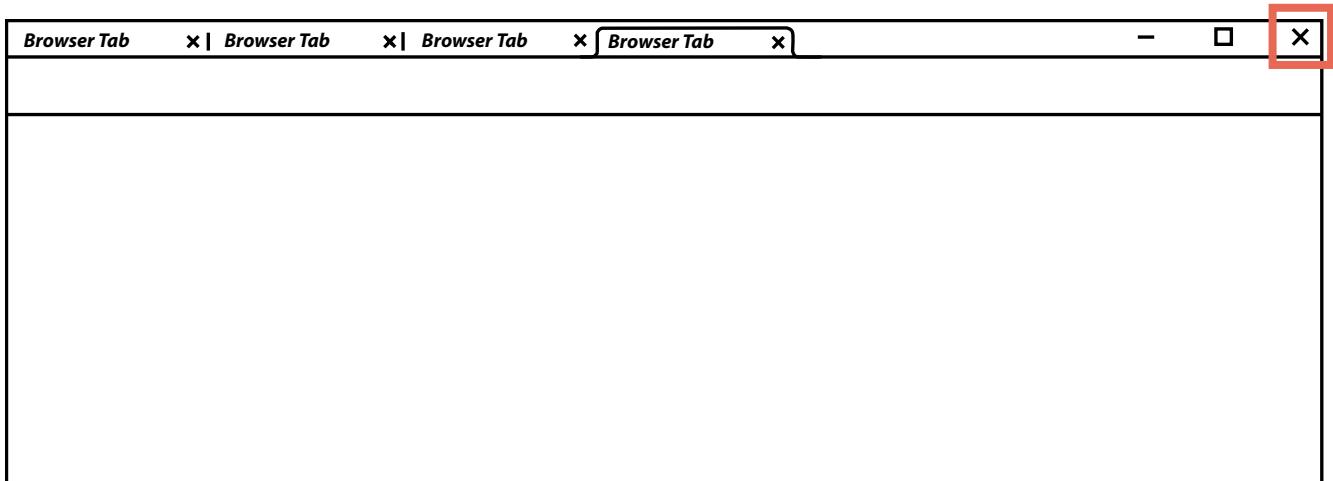
Instructions

Take the following steps to install the software onto your tablet:

- 1 Unplug the **7' QuiltMotion USB Cable** attaching your tablet to the motor plate.



- 2 Close all programs and windows that are open on your tablet.

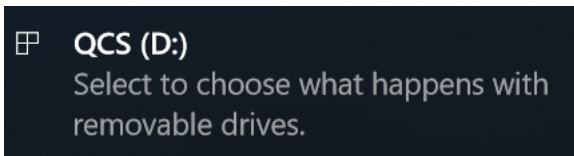


Task 3: Install the QCT6 Software onto Your Tablet (continued)

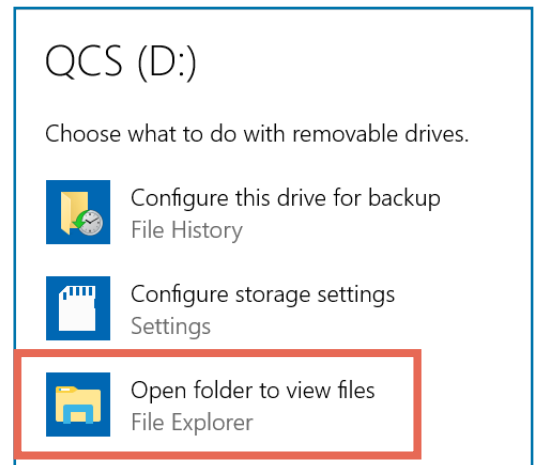
- 3 Take the USB thumb drive from the case. Remove the cap and plug the thumb drive into the tablet.



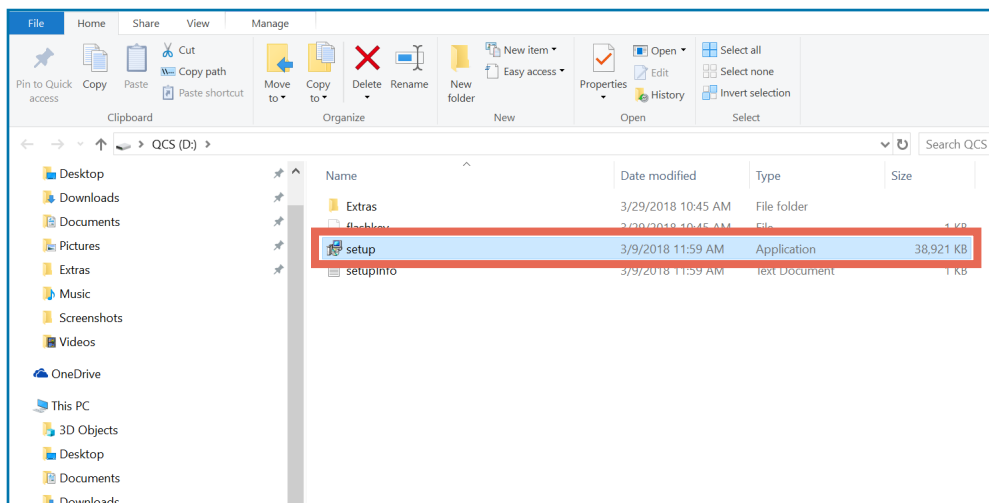
- Windows might prompt you to "Select to choose what happens with removable drives." Tap this message to select what happens when you insert a drive into your USB port.



- Select **Open folder to view files.**

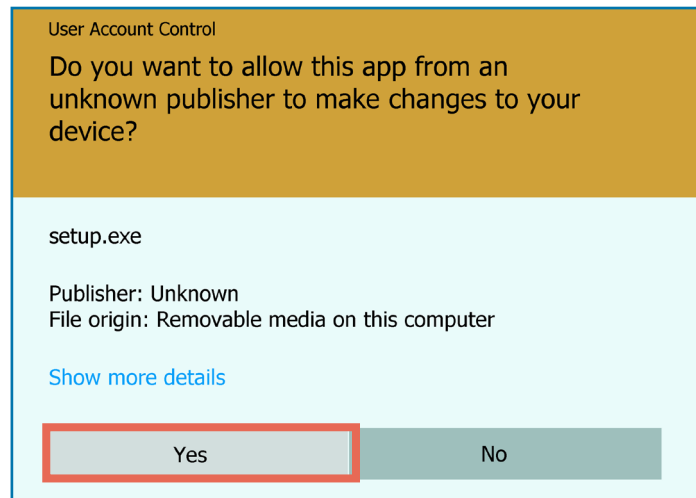


- 4 When the folder is open, double-tap **Setup**.

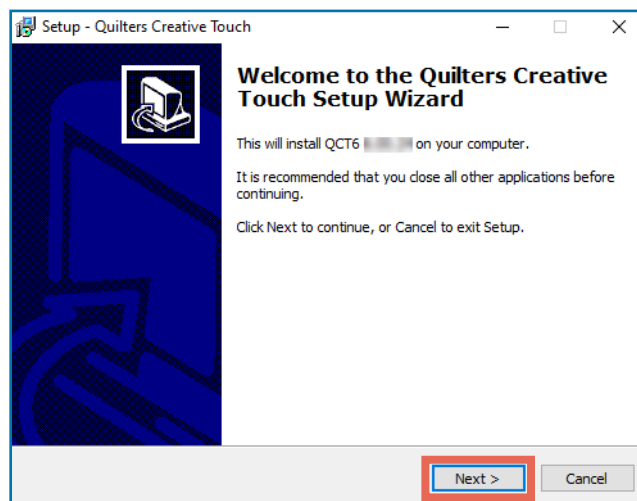


Task 3: Install the QCT6 Software onto Your Tablet (continued)

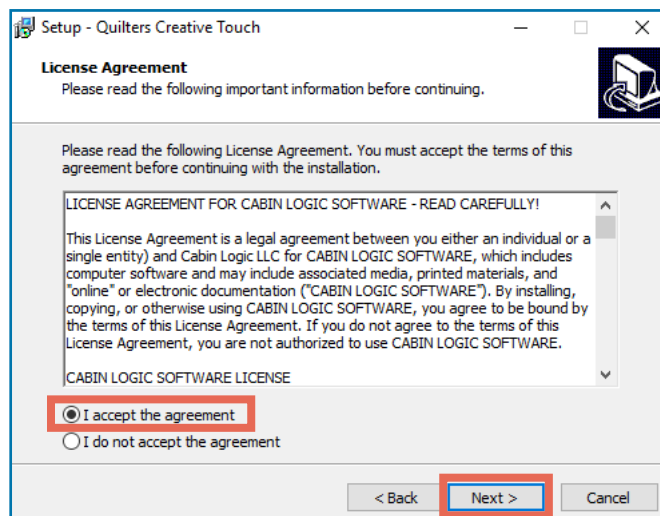
- 5 Windows prompts you: "Do you want to allow this app from an unknown publisher to make changes on your device?" Select **Yes**. The Quilter's Creative Touch setup wizard opens.



- 6 On the Quilter's Creative Touch Setup Wizard, press **Next >**.

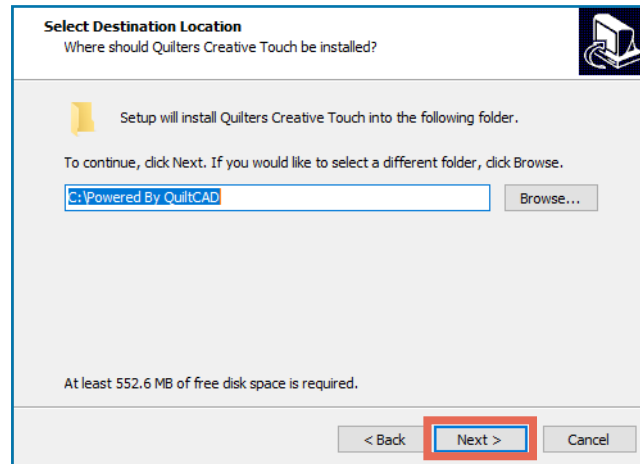


- 7 In the License Agreement window, choose **I accept the agreement**, and then tap **Next >**.

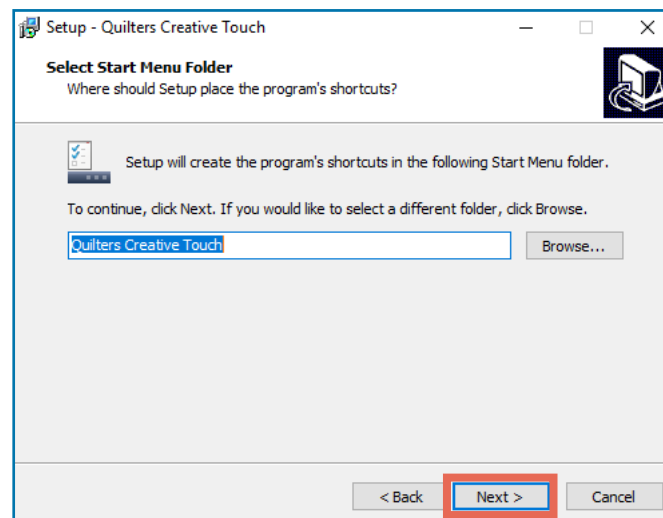


Task 3: Install the QCT6 Software onto Your Tablet (continued)

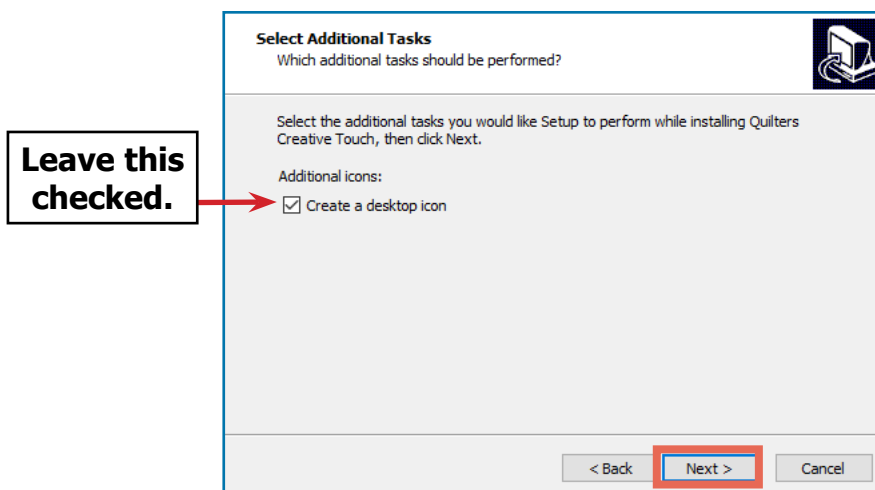
- 8 On the Select Destination Location screen, leave the installation path as the default location (C:\Powered By QuiltCAD) and tap **Next >**.



- 9 On the Select Start Menu Folder screen, press **Next >**.

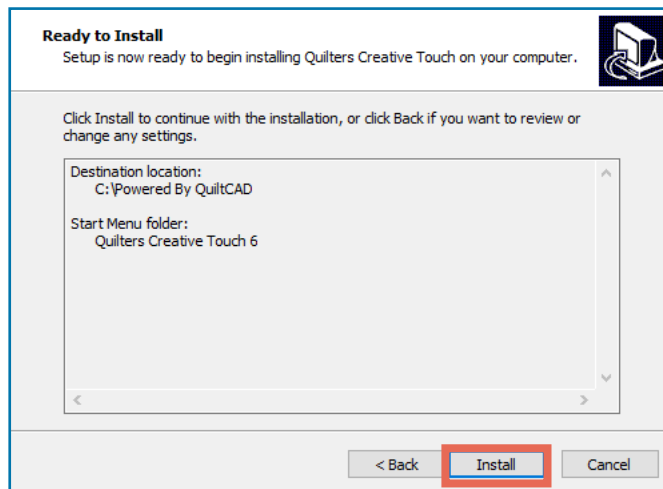


- 10 On the Select Additional Tasks screen, leave **Create a desktop** checked and tap **Next >**.

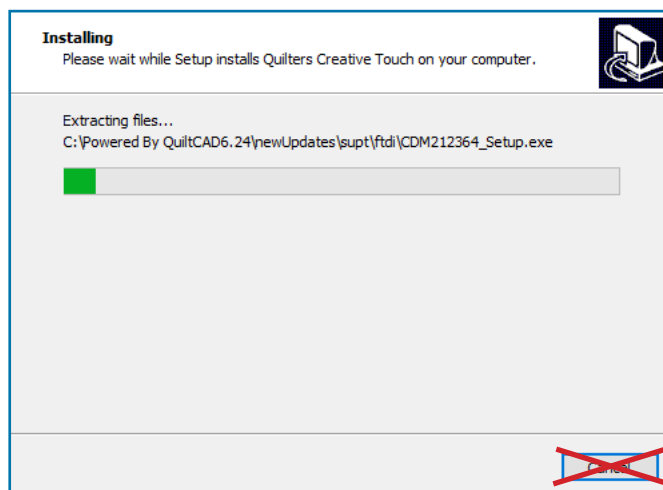


Task 3: Install the QCT6 Software onto Your Tablet (continued)

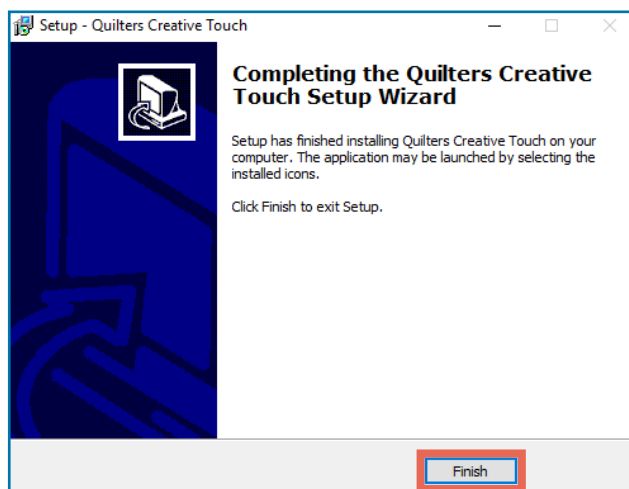
- 11 On the Ready to Install screen, select **Install**.



- 12 The Installing screen shows the progress of the files being extracted for the installation. Wait for the extraction process to finish.



- 13 When the installation is finished, the Completing the Quilter's Creative Touch Setup Wizard screen opens. Choose **Finish**. This closes the Setup window.

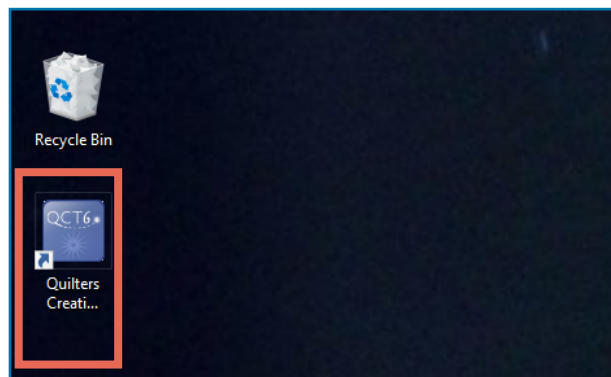


Task 4: Install QCT6 Software Drivers

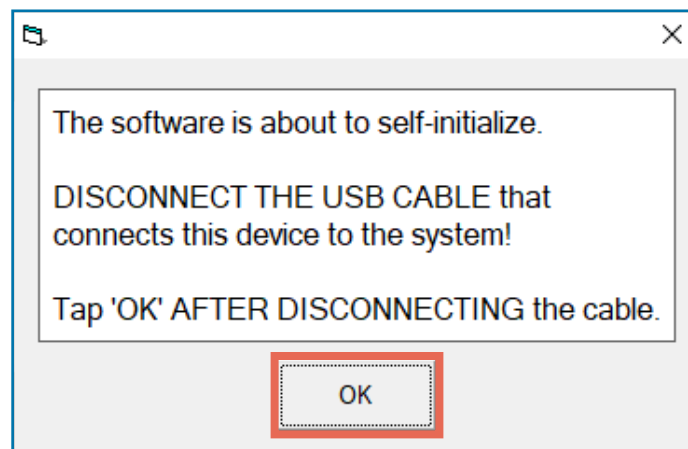
Instructions

Drivers allow your tablet to communicate with and control the automated quilting hardware. Take the following steps to install the automated quilting drivers:

- 1 Double-tap the **Quilter's Creative Touch** icon on your tablet desktop and wait. It might take a moment to load.

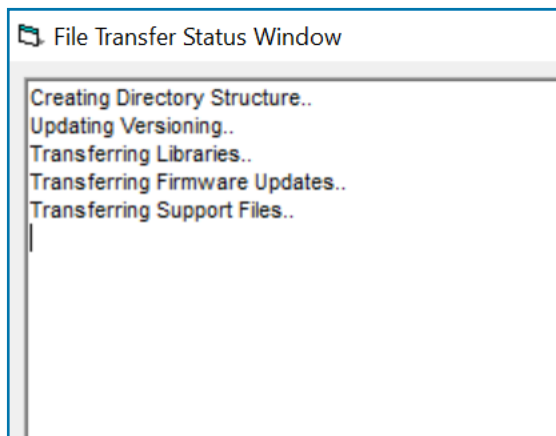


- 2 A message appears saying that the software is about to self-initialize. If you plugged the 7' USB cable back into the tablet, then unplug it. Tap **OK**.



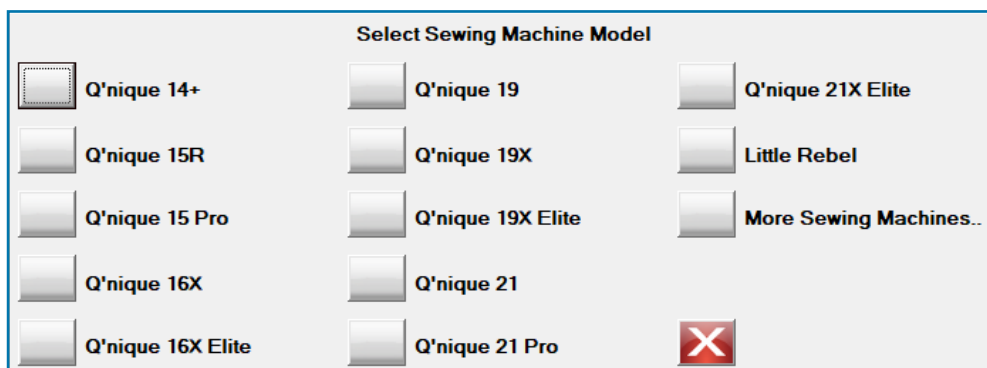
Task 4: Install QCT6 Software Drivers (continued)

- 3 The File Transfer Status Window shows the files being copied to your tablet. Wait for the transfer to finish. This might take some time. It might pause for a while on transferring Support and Help files.

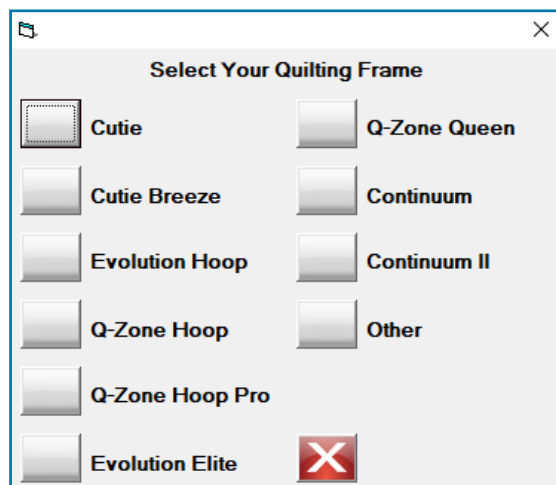


- 4 A list of sewing machine models displays. Select your sewing machine from the list.

Note: If you have a machine that isn't listed, select **More Sewing Machines**. A list of brands will appear. Choose your brand to open a list of brand-specific sewing machines. Choose your sewing machine from the list.

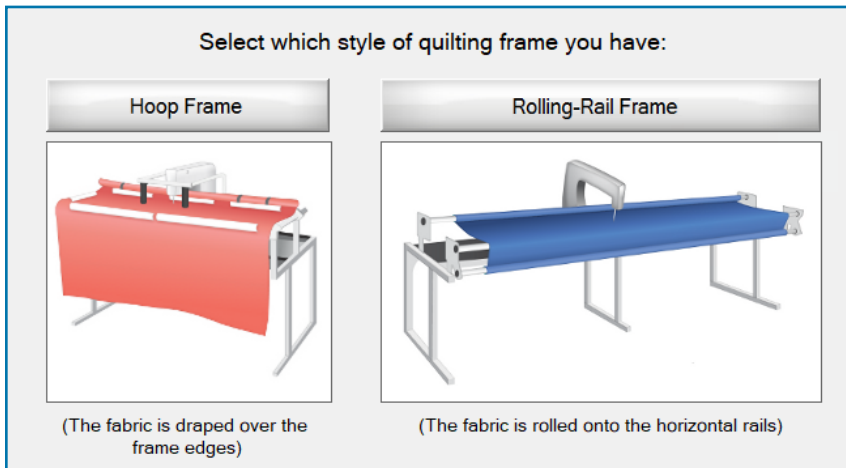


- 5 A list of frame models displays. Select your frame from the list.



Task 4: Install QCT6 Software Drivers (continued)

- Note:** If you select **Other**, you're prompted to choose whether you have a rolling or hoop frame. Select the option that best matches your frame.

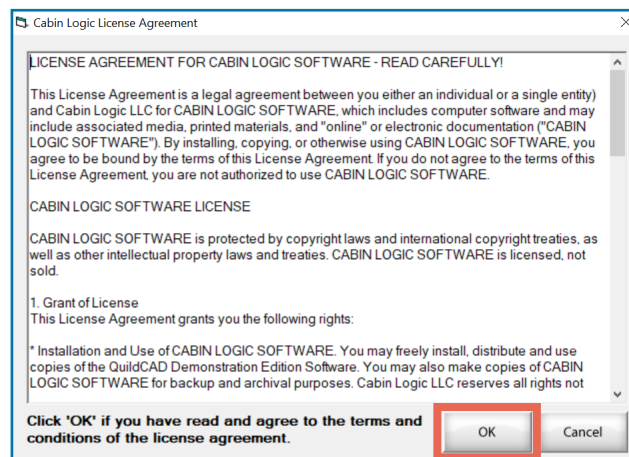


Unsure which frame you have?

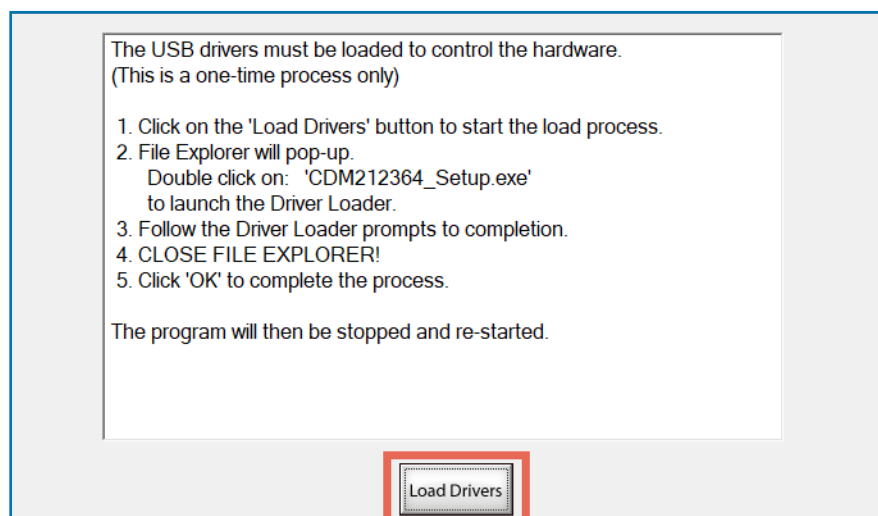
Select Hoop Frame if: Your frame allows you to do a quilt of any size by working in smaller zones across and down the project.

Select Rolling Frame if: Your frame allows you to work from top to bottom of the quilt, rolling the finished sections onto the take-up (back) rail.

- The Cabin Logic License Agreement opens. Tap **OK** if you have read and agree to the terms and conditions of the License Agreement.

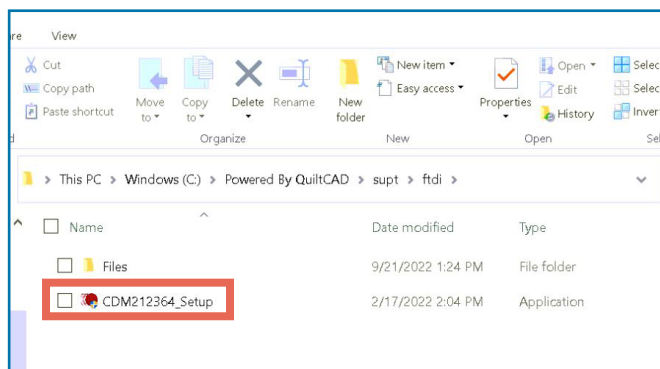


- On the USB Driver Load window, press **Load Drivers**.

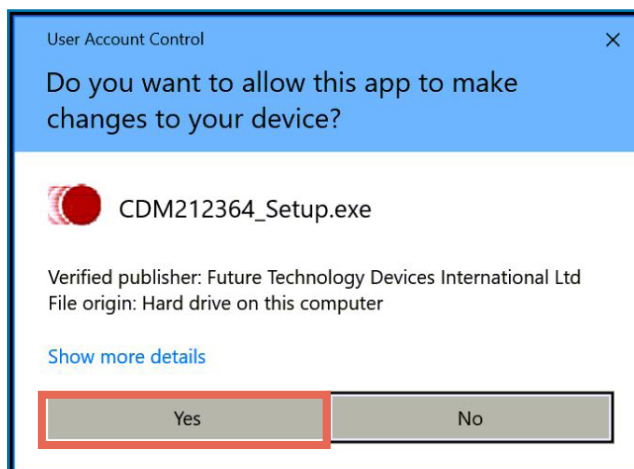


Task 4: Install QCT6 Software Drivers (continued)

- 8 File Explorer will open to the file folder C:\Powered By QuiltCAD\supt\ftdi\. Double-tap **CDM212364_Setup**.



- 9 On the User Account Control notification, choose **Yes**.

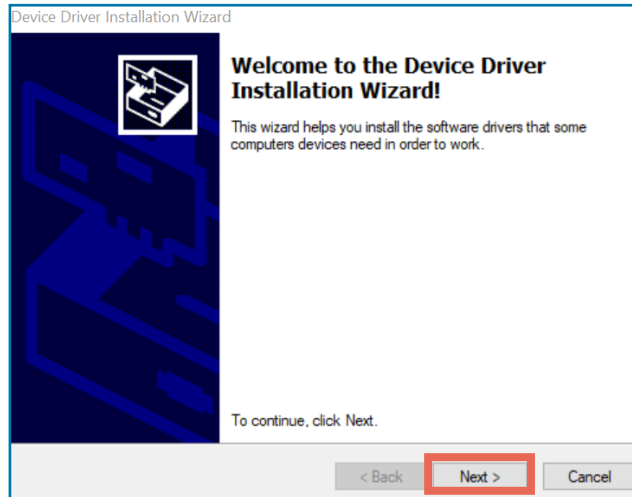


- 10 On the FTDI CDM Drivers window, select **Extract**.

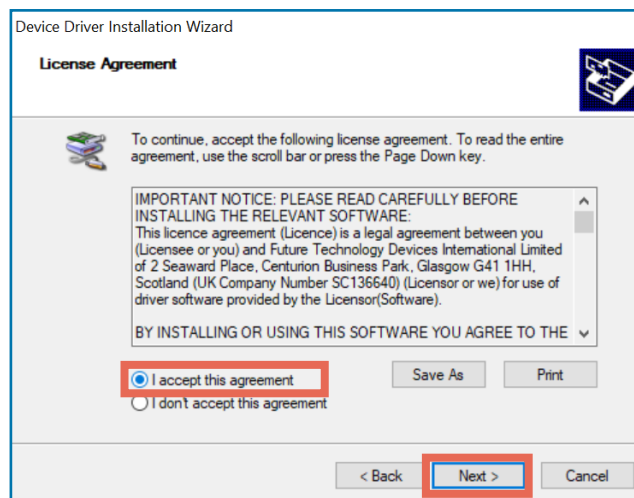


Task 4: Install QCT6 Software Drivers (continued)

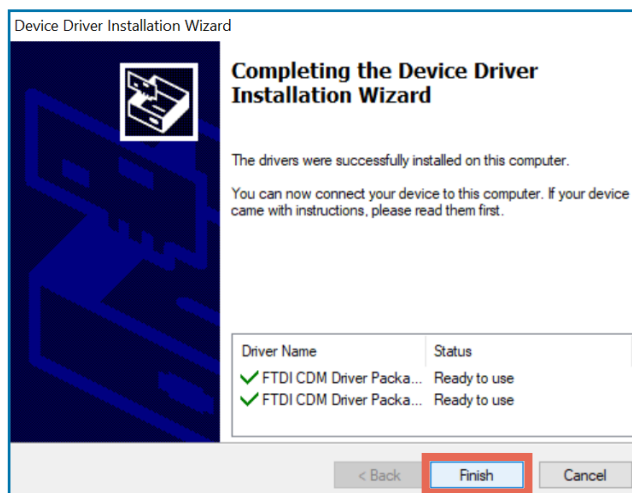
- 11 The Device Driver Installation Wizard displays. Tap **Next >**.



- 12 On the License Agreement window, select **I accept this agreement**, and then press **Next >**.

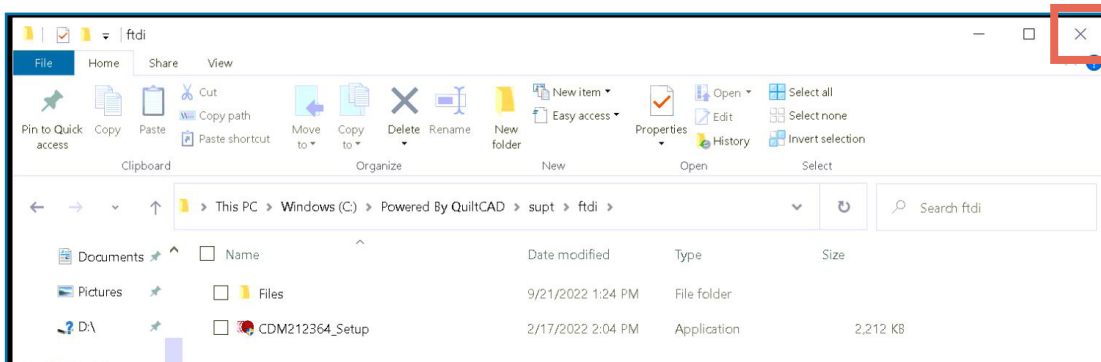


- 13 On the Completing the Device Driver Installation Wizard screen select **Finish**.

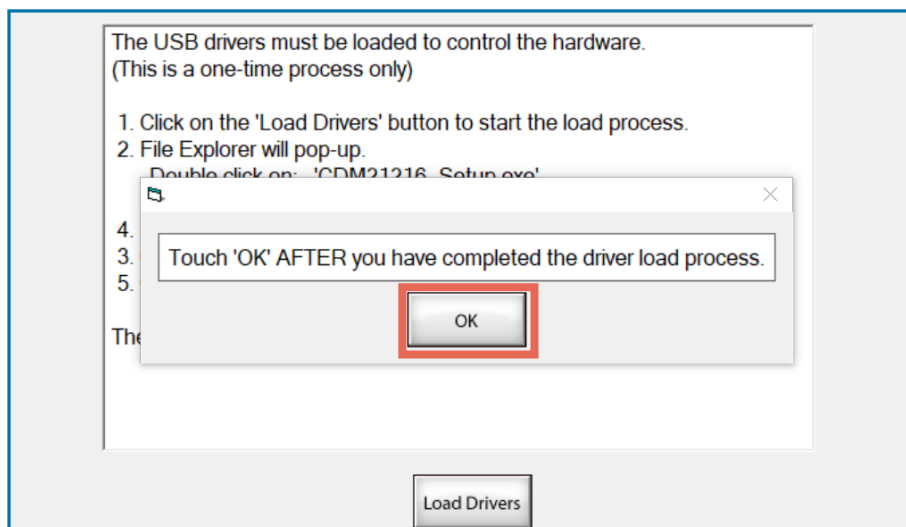


Task 4: Install QCT6 Software Drivers (continued)

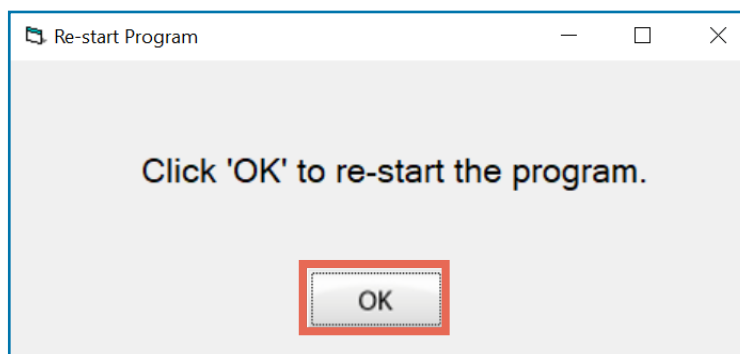
- 14 Exit the File Explorer window showing the CDM212364_Setup file. Tap the **X** in the upper right corner.



- 15 Press **OK** after you have completed the driver load process (steps 7–13 above).

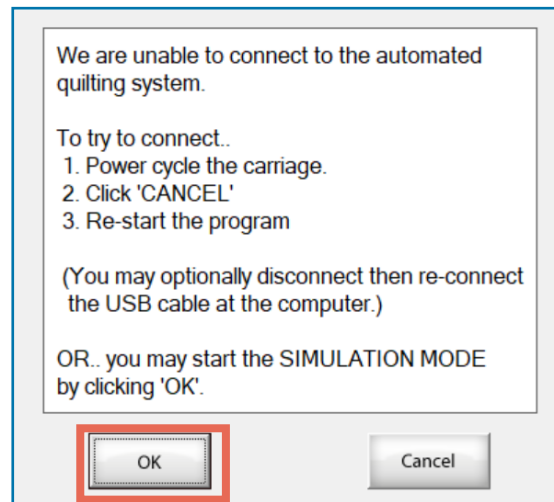


- 16 Choose **OK** to restart the program.

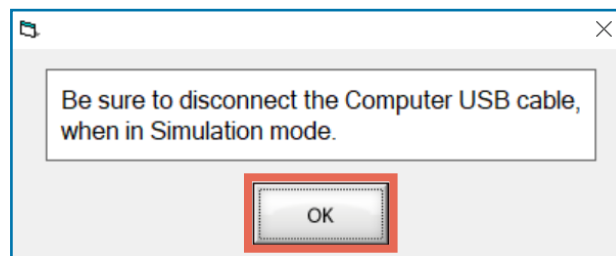


Task 4: Install QCT6 Software Drivers (continued)

- 17 The prompt asks if you'd like to enter Simulation mode. This mode allows you to interact with the QCT6 software when not connected to the machine. Choose **OK**.



- 18 At the prompt "Be sure to disconnect the Computer USB cable, when in Simulation mode," choose **OK**.



- 19 The load splash screen might display for some time. Wait while the software loads.



- 20 When Quilter's Creative Touch finishes booting up, it prompts you to register the software. Continue to the next task.

Task 5: Register QCT6 Software

Parts & Tools Needed:

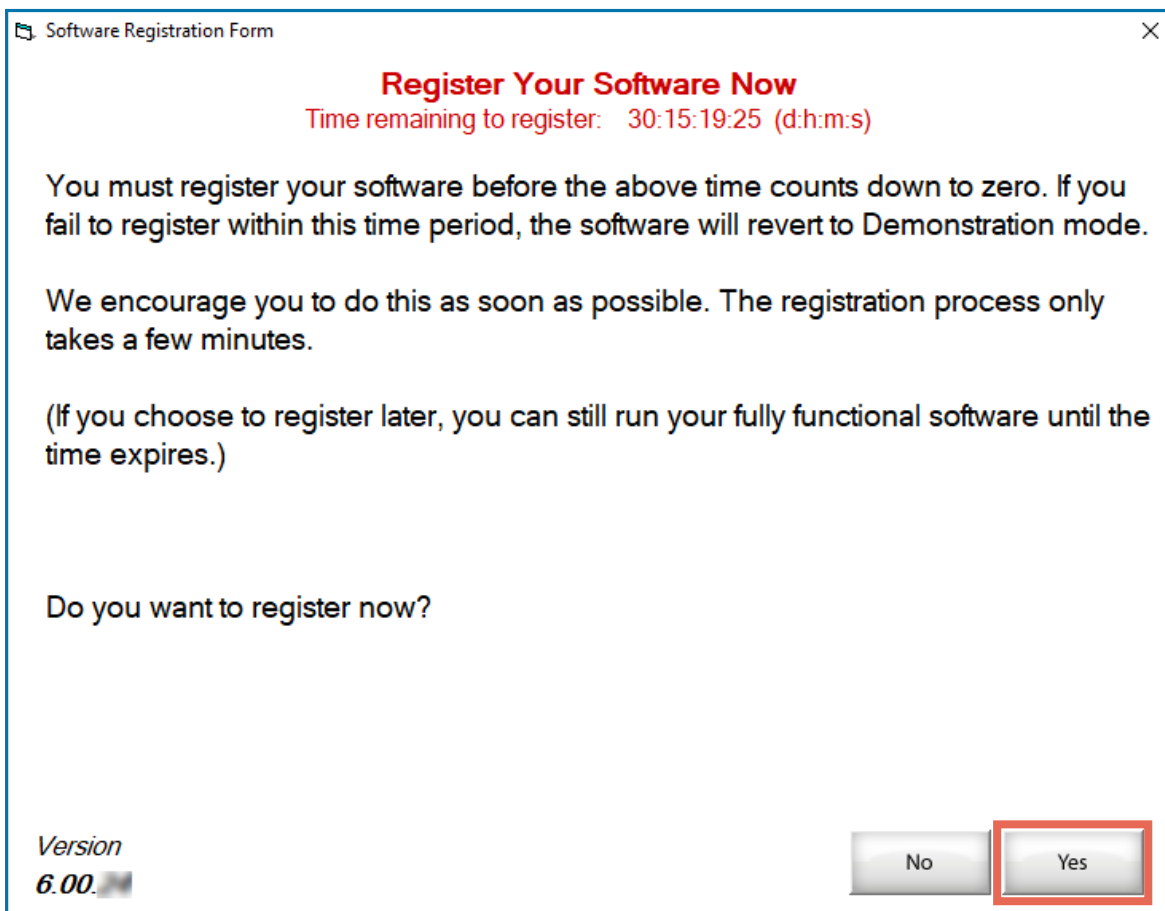
Your Tablet (with Internet connection)



Instructions

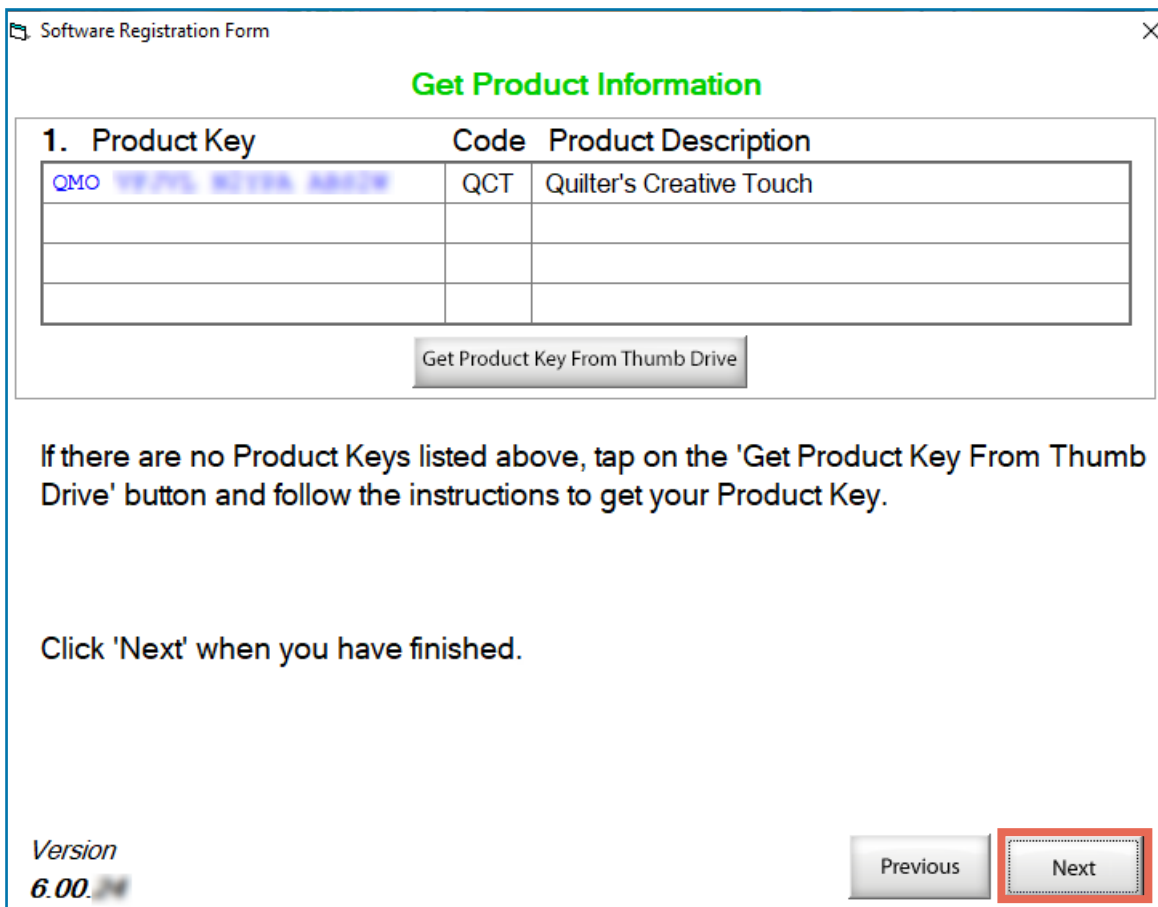
To complete the software registration, your tablet must be connected to the Internet. If needed, see page 68 for instructions on connecting to the Internet. Take the following steps to register your software:

- 1 The Software Registration Form loads, prompting you to register your software now. Tap **Yes**.

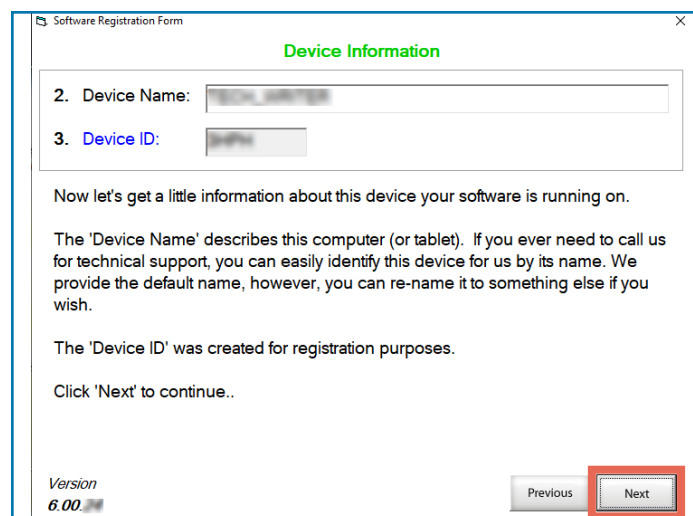


Task 5: Register QCT6 Software (continued)

2 The Get Product Information screen displays. Choose **Next**.



3 The Device Information screen displays. Choose **Next**.



Task 5: Register QCT6 Software (continued)

- 4 Fill out the fields on the Get Email Information screen, and then tap **Next**.

Get Email Information

4. First Name:

5. Last Name:

6. Email Address:

7. Security Question:

8. Answer:

9. Mobile Phone*

* Mobile Number - Only use if you have a USA phone number

Carefully and accurately enter your name and email address. Select and answer a security question, then enter your mobile phone number if you have one.

Click 'Next' to continue.
(which will open up a window for you to review, then submit)

Version 6.00

Note: The mobile phone number field is only required for United States customers.

- 5 Confirm your registration information is correct, and then tap **Submit**.

Review your registration information then tap 'Submit'.

First Name: Last Name:

Email:

Security Question: Security Answer:

Mobile Number (For USA phone numbers only): (To be used for your ID verification)

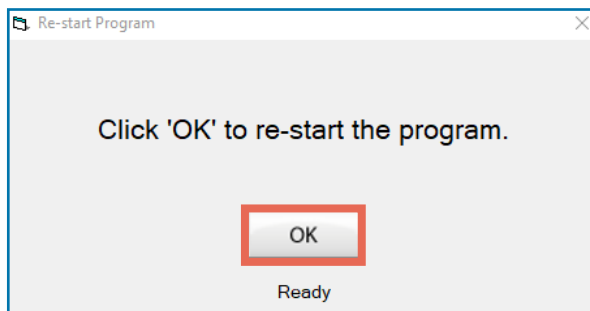
Device Name: Device ID:

Product Keys

QMO	QCT	Quilter's Creative Touch

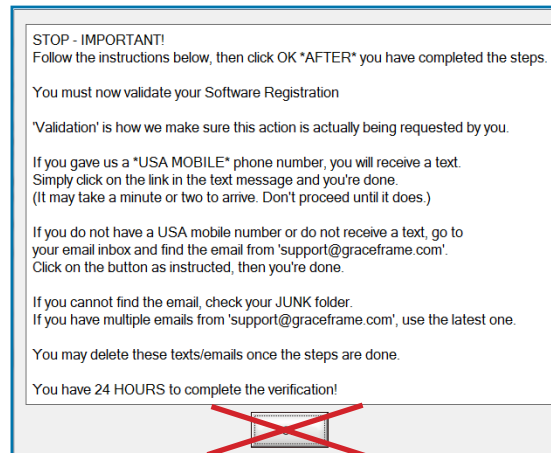
Activation Key:

- 6 A window prompts you to restart the program. Press **OK**.



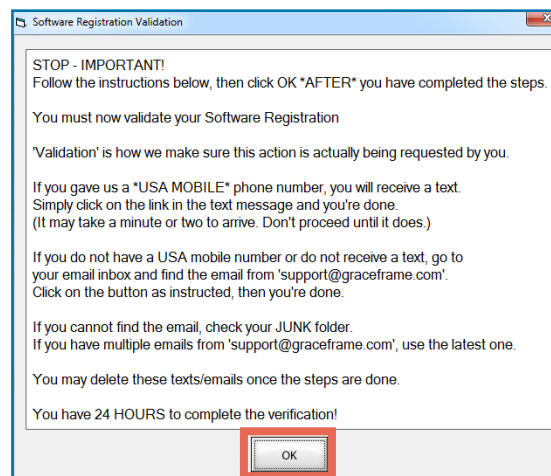
Task 5: Register QCT6 Software (continued)

- 7 Do not tap okay on the Software Validation screen. A text message will be sent to your phone with a verification link. If you did not enter a mobile number or do not receive a text, check your email. Remember to check your spam folder!



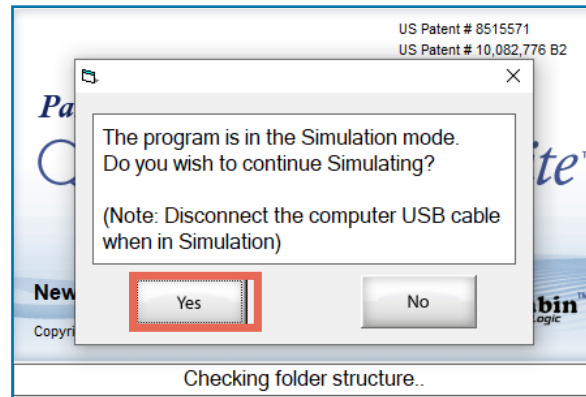
- 8 Open the verification link in your phone or email. A message appears on your phone stating that verification was successful.

- 9 On your tablet, press **OK** on the Software Validation screen.

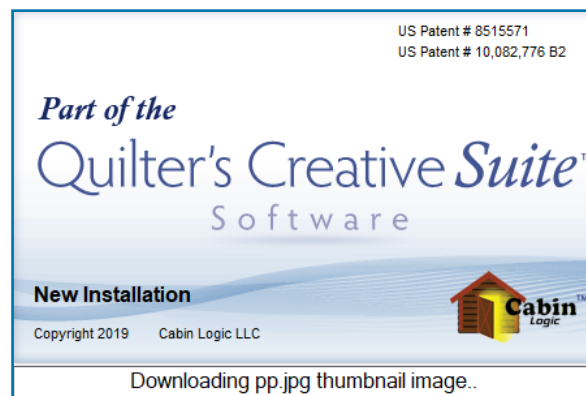


Task 5: Register QCT6 Software (continued)

- 10 When the program starts back up, a message asks if you wish to continue in Simulation mode. Choose **Yes**.

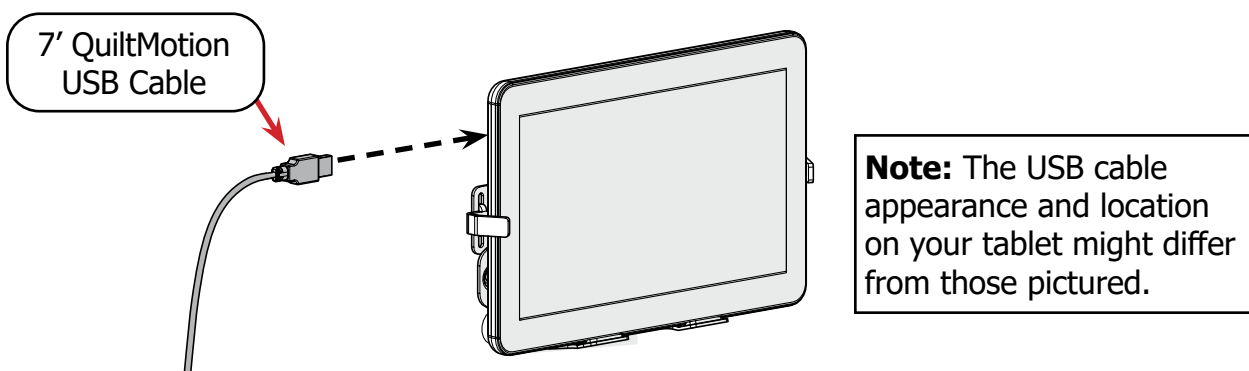


- 11 Wait for the software to finish loading.



- 12 Registration is complete! When you are ready, close the Quilter's Creative Touch software and plug your tablet back into your quilting machine. Re-open the software and begin quilting. Enjoy using Quilter's Creative Touch 6!

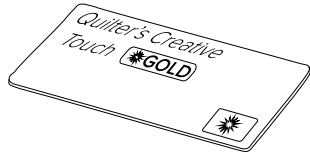
- **Note:** QCT6 Pro users, continue to Task 6 before restarting the software or plugging the tablet back into the quilting machine.



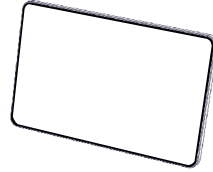
Task 6: Activate Your Gold Card Trial (QCT6 Pro Users Only)

Parts & Tools Needed:

Your Gold Access Card



Your Tablet (with Internet connection)



Note: Gold Card is a feature for QCT Pro users. If you are using base QCT6 or QCT6 Plus, skip this task.

Instructions

Thank you for purchasing Quilter's Creative Touch 6 Pro. To show our appreciation, we have provided you with a free 90-day trial of our Quilter's Creative Touch Gold Access. Your activation number can be found on the back of the Gold Access card.

These are some of the highlights of your new Gold Card subscription:

- **Fabric Compensation:** Adjust your design to run parallel to an irregular seam or edge.
- **Pattern Eclipse:** Stitch around designated areas on your quilt, such as an appliqué.
- **Multi-Pattern Placement:** Place multiple designs at one time.
- **Borders and Corners:** Place border and corner designs at one time.

See our website for a complete list of features. After your 90 day trial expires, you can renew your subscription at graceframe.com. **Note:** Instructions for using Gold features are found in the help files.

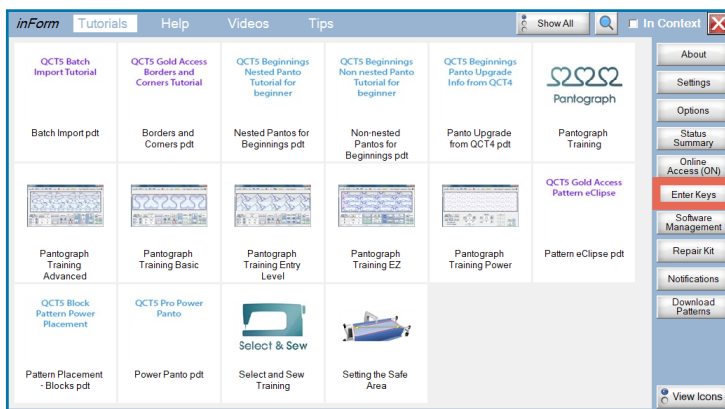
Take the following steps to activate your Gold subscription:

- 1 From the main screen, tap **Help** in the top-right corner.

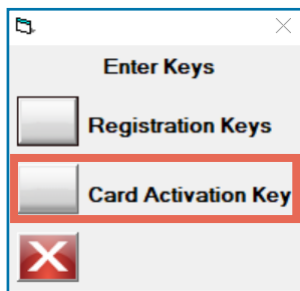


Task 6: Activate Your Gold Card Trial (continued)

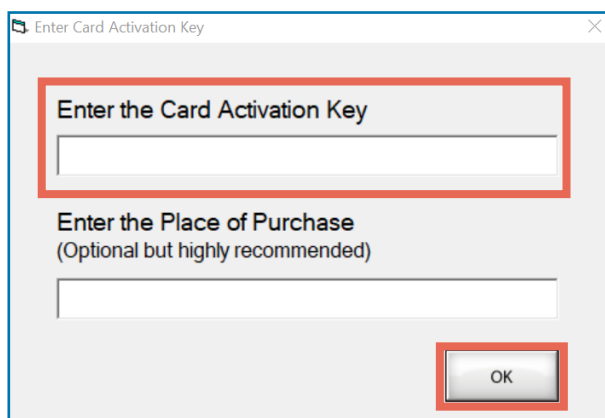
2 Choose **Enter Keys** from the list of options on the right.



3 Select **Card Activation Key**.

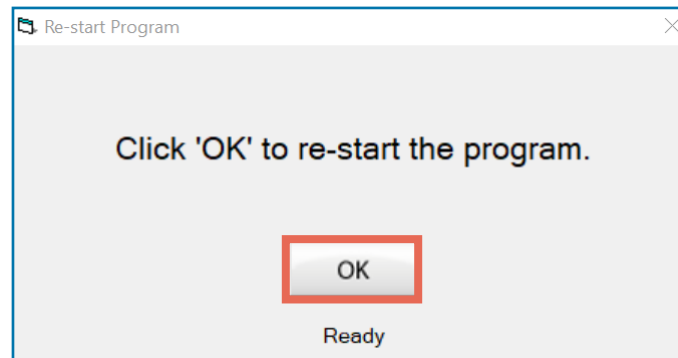


4 Enter the **activation number** found on the back of the Gold Access card. If desired, enter the **Place of Purchase**. When finished, tap **OK**.



Task 6: Activate Your Gold Card Trial (continued)

- 5 A message will prompt you to re-start the program. Tap **OK**.



- 6 Complete the steps in the software registration section, starting at step 7 on page 27.

Using the Software

The software use instructions are separated by product tier (or version). Go to the section for your tier of the software:

- **Quilter's Creative Touch 6 Plus:** See page 33.
- **Quilter's Creative Touch 6 Pro:** See page 33.
- **Quilter's Creative Touch 6 (base tier – not Plus or Pro):** See page 36.

Getting Started with QCT6 Plus and Pro

These instructions pertain to QCT6 Plus and QCT6 Pro only. Instructions on QCT6 Edge-to-Edge are found on page 36.

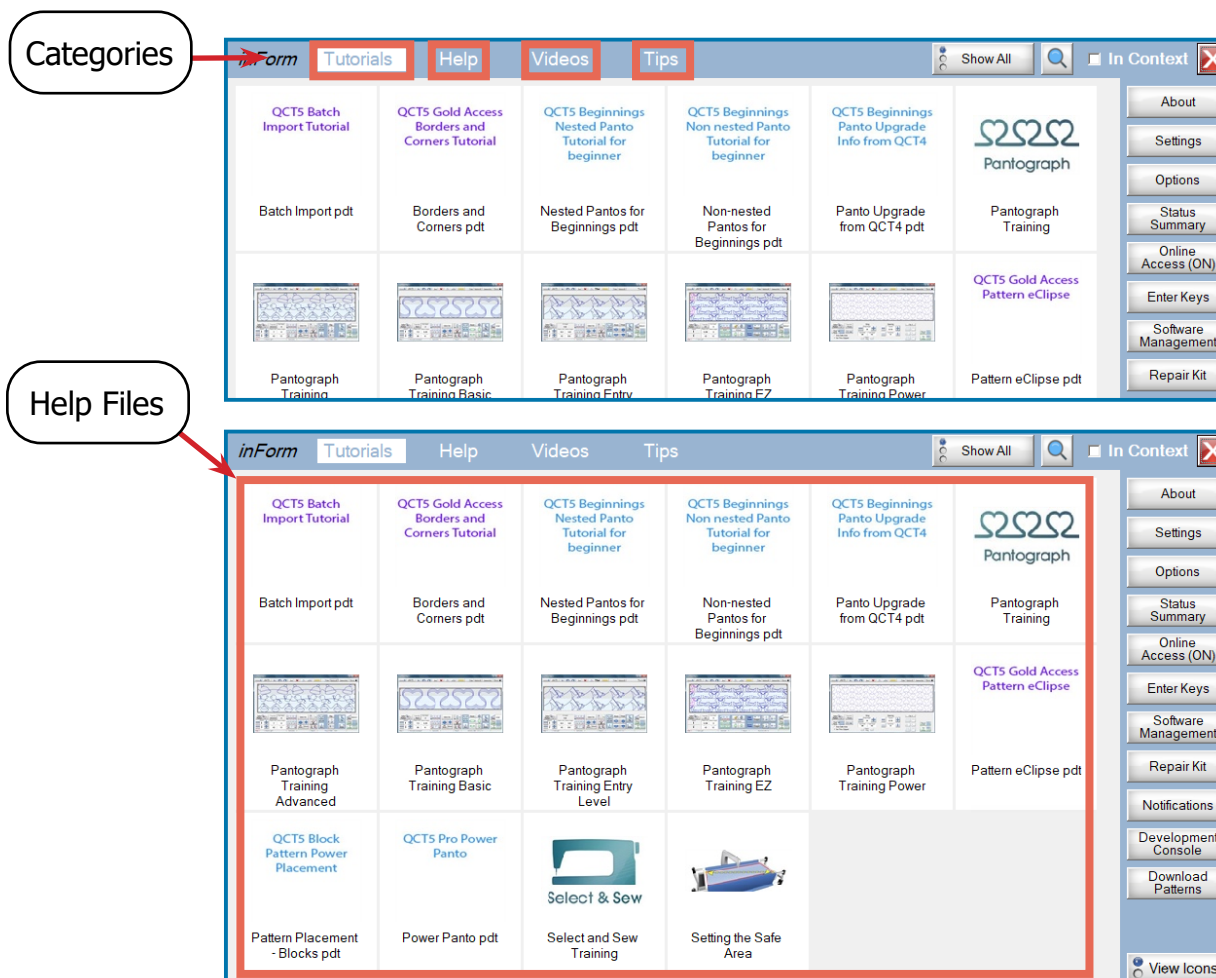
Accessing Help

Help with using the Plus and Pro tiers is found in the software help files. Take the following steps:

- 1 Open the **Help** menu from the top right of the QCT6 main screen.



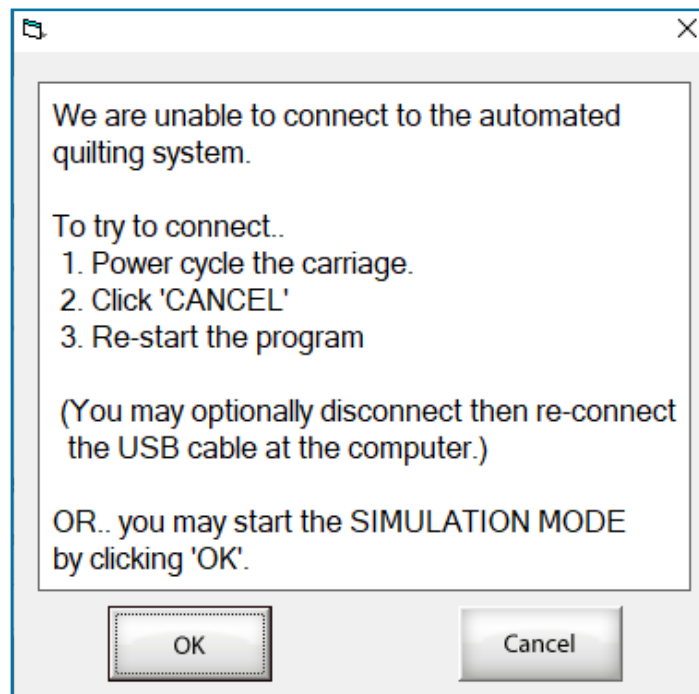
- 2 Choose any **help file** under the **Tutorial**, **Help**, **Videos**, and **Tips** tabs.



Troubleshooting Common Issues

The following list of common issues you may have when using the software. Read each entry for troubleshooting steps.

The software says 'We are unable to connect to the automated quilting system.'



Problem: A message appears saying 'We are unable to connect to the automated quilting system' and gives the choice of starting Simulation mode by tapping **OK** or pressing **Cancel** to close the program.

Cause: The hardware and software cannot communicate.

Solution:

- Check that all of your cables are fully plugged in and make sure the power is turned on.
- Close all instances of the software, restart your tablet, and restart the software.
- If your tablet is installing updates, it cannot connect to the hardware. Close QCT6, wait for the updates to finish, restart your tablet, and then try opening the software again.
- If the problem persists, speak to a Grace Company support technician.

Something is wrong with my stitches.

Problem: Stitches are irregular length or the thread tension is off.

Cause: Stitch quality issues have a wide range of causes, but are rarely related to the software.

Solution:

- For stitches of irregular length: check that the machine encoders are plugged in and properly tensioned against the tracks (see your machine manual for details). Irregular stitch length can also be a tension problem (see below).
- For tension problems: check that the fabric is installed on the frame correctly. Check that the machine is threaded correctly. Check your hopping foot height and needle orientation.
- Review the booklet *Troubleshooting Tension for Quilters* for specific advice.

I can't move my machine.

Problem: The machine cannot be moved across the frame.

Cause: The carriages are locked. The software locks the carriages in place during many steps of the software use.

Solution:

- Open the **toolbox** and select **Release Carriage**.

Getting Started with QCT6 Edge-to-Edge

The instructions in this section pertain to QCT6 Edge-to-Edge. Instructions for QCT6 Plus and Pro are found on page 33.

Using the Buttons

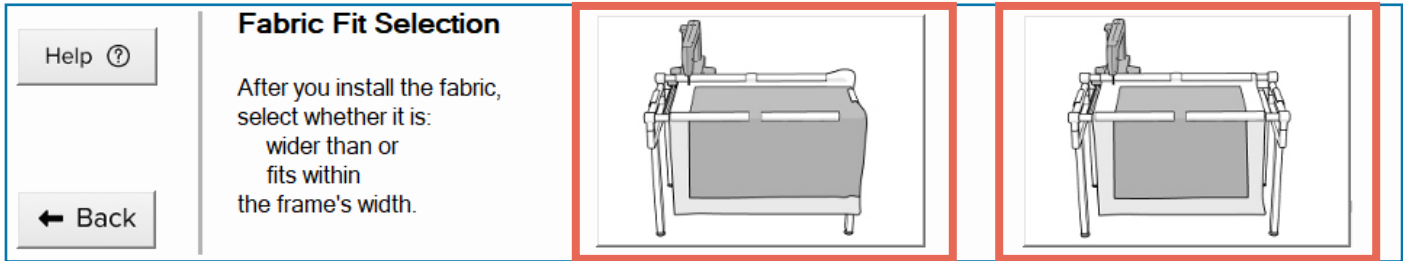
To use an on-screen button, tap it once with your finger. Wait at least 2 seconds before attempting to tap the button a second time. Some buttons, especially those that move to a new screen or prompt the machine to do something, require time to load before there is an obvious reaction.

The following are some of the buttons that you will use to interact with the software:

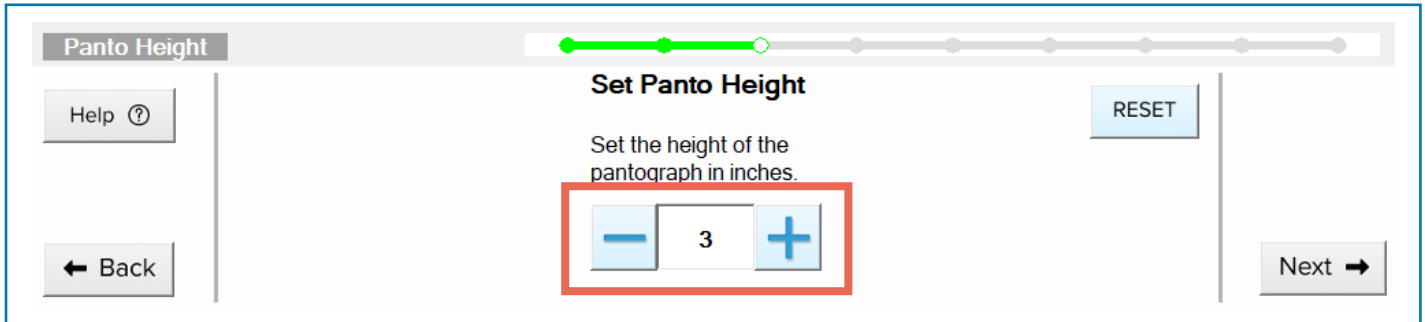
STOP Button: This button appears when the machine is moving. Tap it to halt the machine.



Image Buttons: These are buttons that look like pictures. They appear on the lower half of the screen.

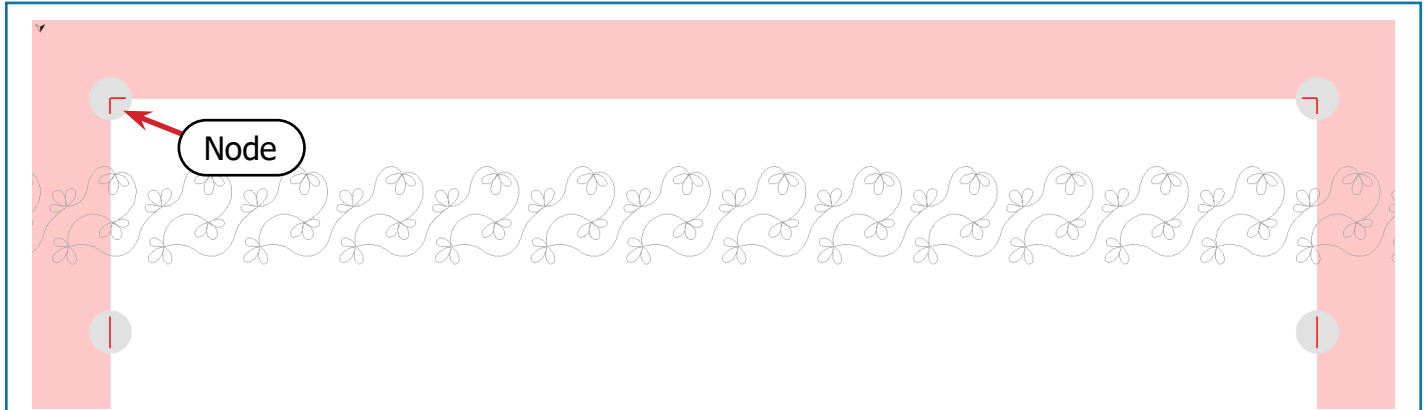


Number Field Buttons: These buttons are used to change a number setting on the screen. Pressing [+] and [-] updates the number incrementally, and tapping the number brings up a number pad to enter a number directly.



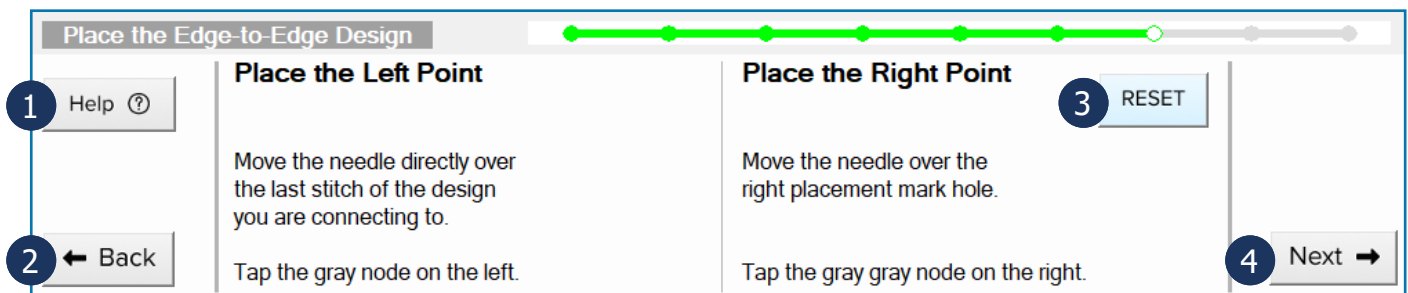
Getting Started with QCT6 Edge-to-Edge – Using the Buttons (continued)

Node Buttons: These are gray circles that appear in the preview window on the upper half of the screen. When activated, they turn green. Nodes correspond with points on your quilt top. For example, in the Setting Your Quilt-Top Edges screen, each node corresponds with a corner or side of the quilt top.



To use the nodes, move your machine needle to the place on the quilt that corresponds with the node (or corresponds with where you *want* the node to be). Tap the gray node. It turns green to show it is activated.

Standard Buttons: These buttons appear in the action area of most software screens.



- 1 **Help:** Opens the tutorial for the current screen.
- 2 **Back:** Returns to a previous screen in the quilting process, usually the screen you were last on.
- 3 **Reset:** Clears any changes made on the current screen.
- 4 **Next:** Proceeds to the next screen.

Getting Started with QCT6 Edge-to-Edge – Using the Buttons (continued)

Header Buttons: These buttons appear in the header of most software screens.



- 1 **Home:** Closes Edge-to-Edge and opens the software home screen.
- 2 **Restart:** Returns to the first screen of Edge-to-Edge and clears any values chosen for the design, design height, and design spacing.
- 3 **Info:** Displays the name of the design file, the design height, and the design spacing values that are currently set.
- 4 **Zoom:** Magnifies the content in the preview window. This tool is disabled for some screens.
- 5 **Tool box:** Opens the Tool Box menu, which provides the following options:
 - **Release Carriage:** Unlocks the bottom carriage so that the machine can be moved.
 - **Release Sewing Machine:** Temporarily enables the buttons on the machine display and handles.
- 6 **Settings:** Opens the Settings menu, which provides the following options:
 - **System Settings:** Change your quilting frame, sewing machine, or safe area. If you set up QCT on a new frame or switch to a new sewing machine, you must update this information in the software for the best experience.
 - **Stitch Settings:** Select your **Stitches Per Inch**, number of **Tie Off** stitches, and turn the **Pull Bobbin Thread Steps** on or off.

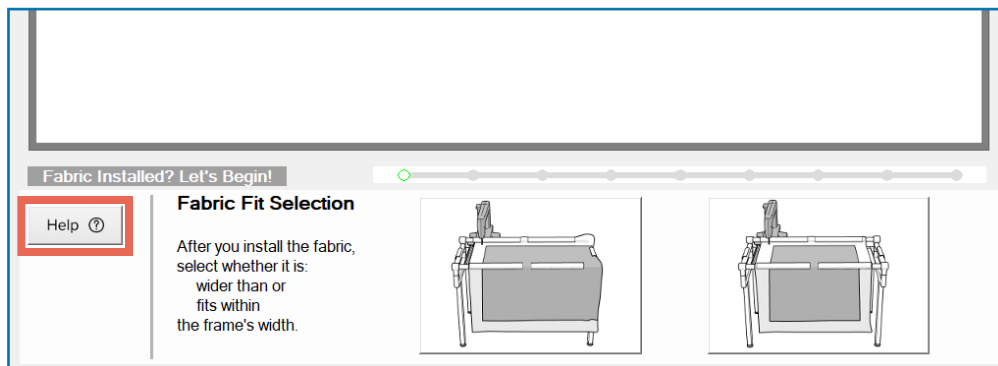
Getting Started with QCT6 Edge-to-Edge – Accessing Help (continued)

Accessing Help

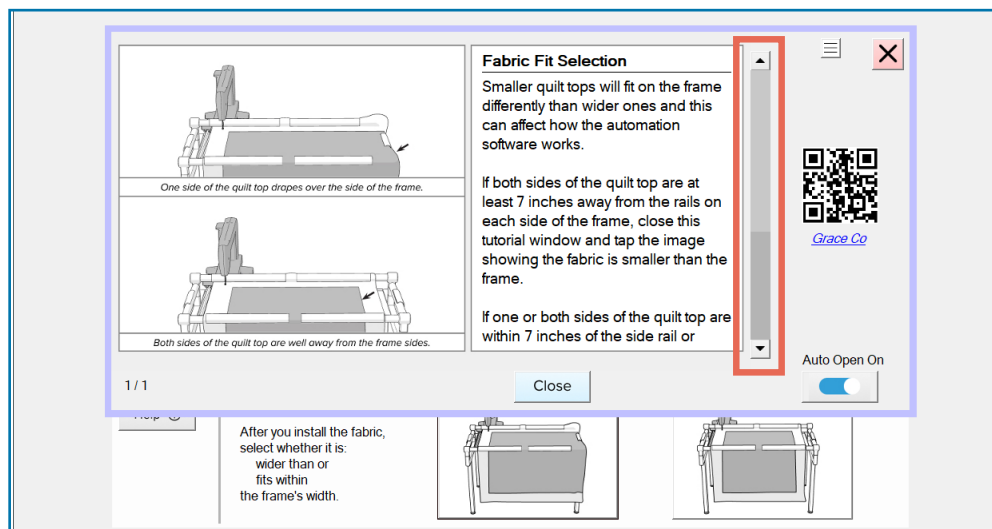
Help with using this tier of software can be found in the Quick-Start Guide that came with your kit, the software help files, or the built-in, on-screen tutorials.

To access and use the tutorials:

- 1 Press **Help** from the bottom of any Edge-to-Edge screen.



- 2 The tutorial screen displays. Scroll through the information by sliding the scroll bar up and down.



Note: While the tutorial is open, you will not be able to press buttons on the other screen, even if you can see them. You must first close the tutorial by pressing **Close** or **X**.

Getting Started with QCT6 Edge-to-Edge – Accessing Help (continued)

- Sometimes a tutorial has additional pages. Press **Next** to move to see more pages of the tutorial.

Setting the Safe Area

The safe area is the space on your frame where the automation can safely move your machine without bumping into the frame's rails or sides.

If the machine hits or catches on a frame rail while stitching, your design will not stitch out properly; you'll need to pick out stitches and start over.

If the machine sews off the edge of the fabric and into the open air, the machine could jam and break.

1 / 2

Next →

Auto Open On

- Note:** To see an earlier page in the tutorial, press **Previous**.

- If you'd like relevant tutorial information to pop up every time you go to a new quilting step, toggle **Auto Open** to **On**.

Fabric Fit Selection

Smaller quilt tops will fit on the frame differently than wider ones and this can affect how the automation software works.

If both sides of the quilt top are at least 7 inches away from the rails on each side of the frame, close this tutorial window and tap the image showing the fabric is smaller than the frame.

If one or both sides of the quilt top are within 7 inches of the side rail or

1 / 1

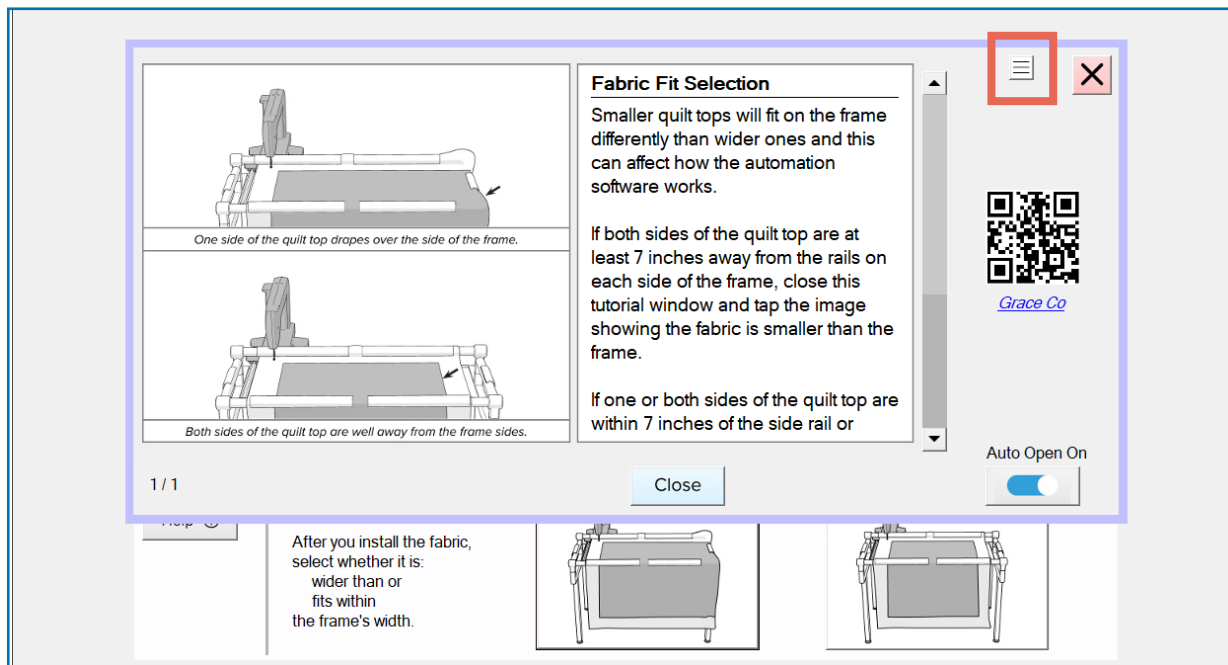
Close

Auto Open On

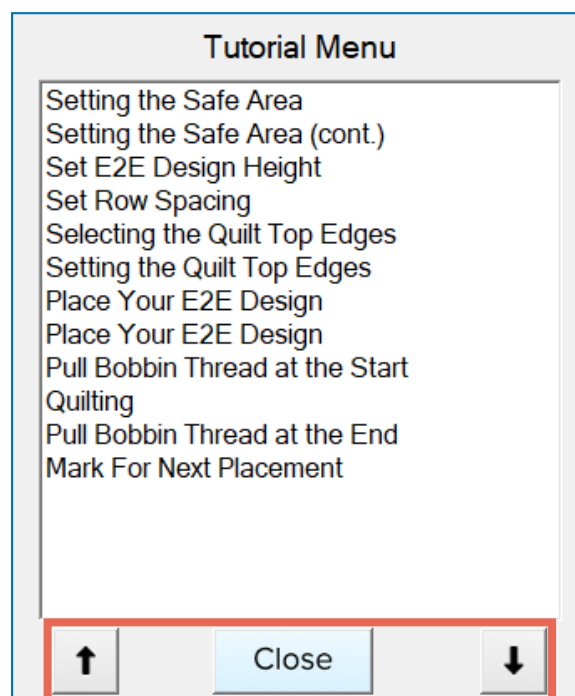
After you install the fabric, select whether it is:
wider than or
fits within
the frame's width.

Getting Started with QCT6 Edge-to-Edge – Accessing Help (continued)

- 5 You can access tutorials for other screens by opening the Tutorial Menu. Tap the **Menu** icon in the top-right corner of the tutorial.

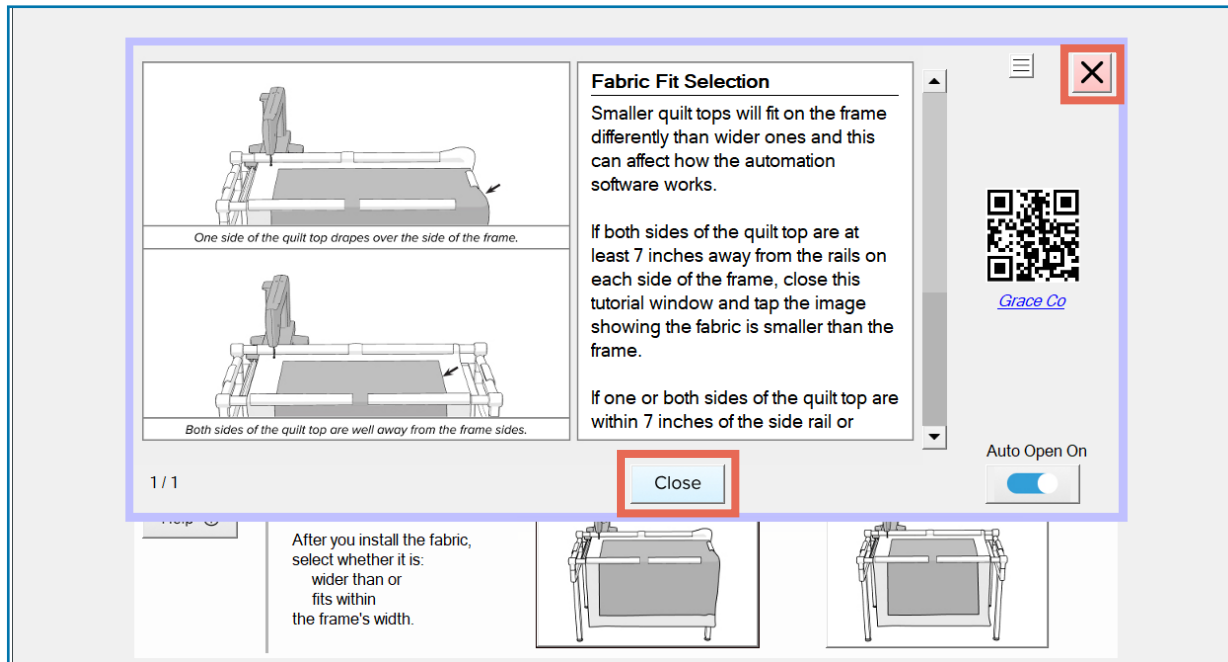


- 6 The Tutorials Menu displays. Tap the **arrows** to scroll through the list. When the tutorial you wish to view is highlighted, press **Close** in the menu. The new tutorial content displays.

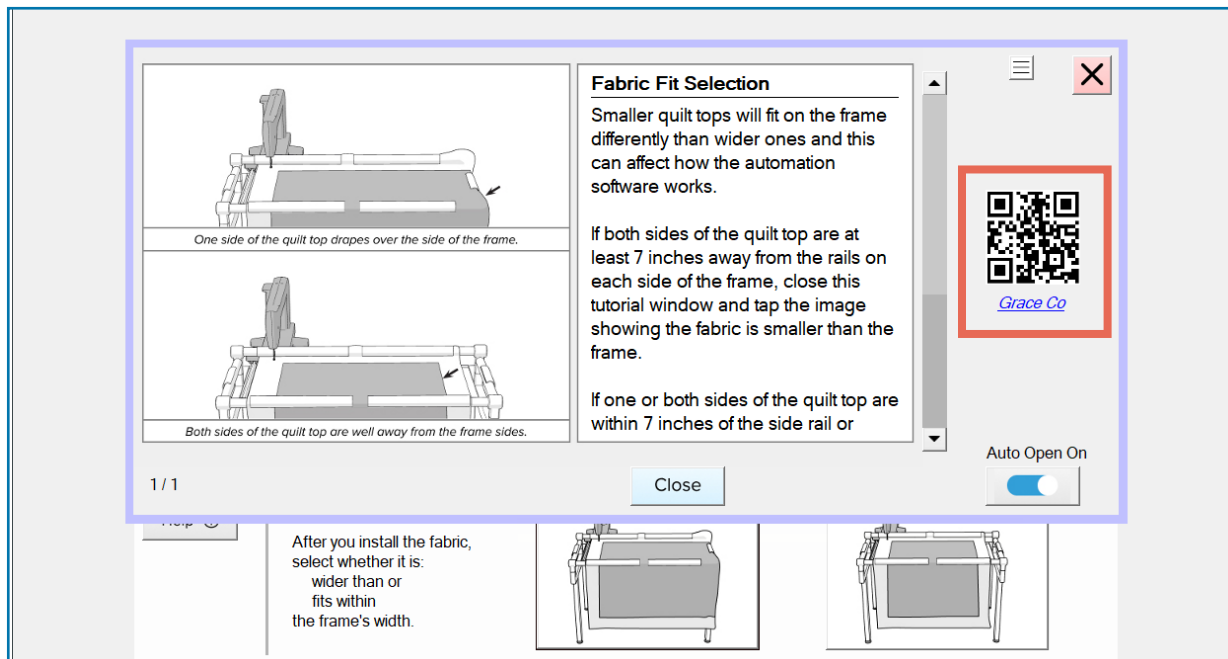


Getting Started with QCT6 Edge-to-Edge – Accessing Help (continued)

- After reviewing the tutorial content, tap **Close** or **X** to leave the tutorial.



- Tip:** Tap the link in the tutorial or scan the QR code to see video tutorials for using the software.



Getting Started with QCT6 Edge-to-Edge – Accessing Help (continued)

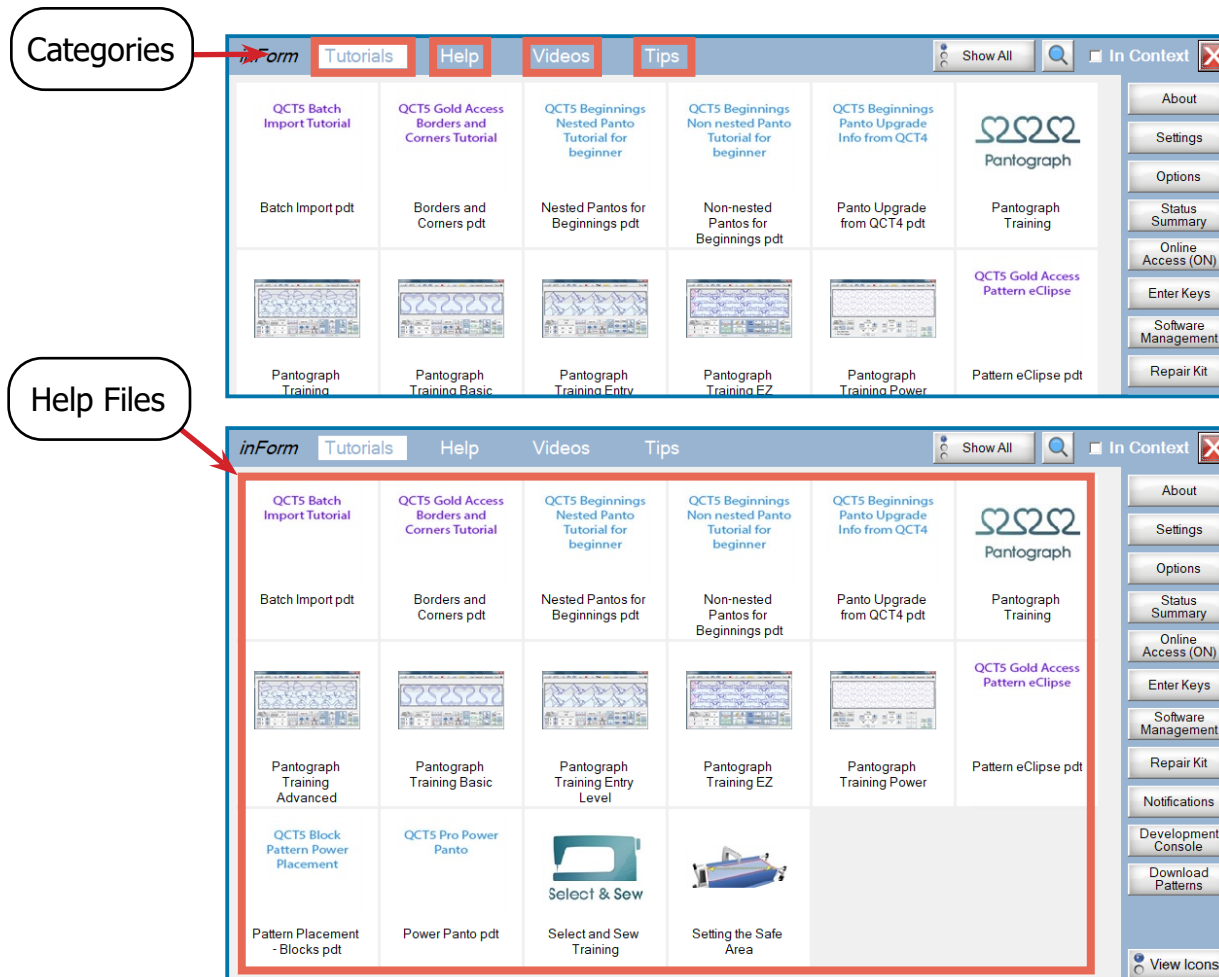
To access the software help files:

- 1 Open the **Help** menu from the top right of the QCT6 main screen.



- 2 Choose any **help file** under the **Tutorial, Help, Videos, and Tips** tabs.

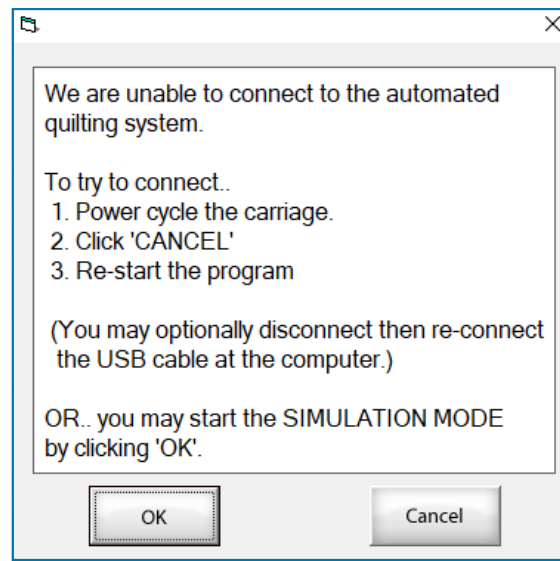
- **Note:** Most of the help files apply only to other tiers of the software (Plus and Pro). For help files that apply to the Edge-to-Edge, look for files labeled Edge-to-Edge or E2E.



Troubleshooting Common Issues

The following list of common issues you may have when using the software. Read each entry for troubleshooting steps.

The software says 'We are unable to connect to the automated quilting system.'



Problem: A message appears saying 'We are unable to connect to the automated quilting system' and gives the choice of starting Simulation mode by tapping **OK** or pressing **Cancel** to close the program.

Cause: The hardware and software cannot communicate.

Solution:

- Check that all of your cables are fully plugged in and make sure the power is turned on.
- Close all instances of the software, restart your tablet, and restart the software.
- If your tablet is installing updates, it cannot connect to the hardware. Close QCT6, wait for the updates to finish, restart your tablet, and then try opening the software again.
- If the problem persists, speak to a Grace Company support technician.

Something is wrong with my stitches.

Problem: Stitches are irregular length or the thread tension is off.

Cause: Stitch quality issues have a wide range of causes, but are rarely related to the software.

Solution:

Getting Started with QCT6 Edge-to-Edge – Troubleshooting Common Issues (cont.)

- For stitches of irregular length: check that the machine encoders are plugged in and properly tensioned against the tracks (see your machine manual for details). Irregular stitch length can also be a tension problem (see below).
- For tension problems: check that the fabric is installed on the frame correctly. Check that the machine is threaded correctly. Check your hopping foot height and needle orientation.
- Review the booklet *Troubleshooting Tension for Quilters* for specific advice.

I can't move my machine.

Problem: The machine cannot be moved across the frame.

Cause: The carriages are locked. The software locks the carriages in place during many steps of the software use.

Solution:

- From the header bar in an Edge-to-Edge screen, tap the **toolbox** and select **Release Carriage**.
- **IMPORTANT:** It is not recommended to unlock your carriage on any of the marking screens unless you have already made the mark (pressed single stitch to puncture the sticker). There is no way to lock the machine needle position back over the marking point on this screen. You will need to press Back once and Next once to reset the marking process.

The software says "The placed design and/or the marks for the next placement are outside of the safe area."

Problem: A message appears stating that "the placed design and/or the marks for the next placement are outside of the safe area" and asks if you wish to correct this.

Cause: The safe area was set too close to the fabric edges, or you have shifted your fabric so the area you would like to quilt is now outside of the safe area.

Solution:

- If you are placing your first few rows of designs, go back to the safe area screen and reset your safe area so it is further away from the quilt top.
 - If you just shifted your fabric, reposition your fabric so the area you want to stitch is further toward the center of the frame, away from the frame rails.
 - For additional information on correctly setting the safe area, see the on-screen tutorials or the printed Quick-Start Guide.
-

Getting Started with QCT6 Edge-to-Edge – Troubleshooting Common Issues (cont.)

Large flat lines are appearing in my design preview.

Problem: The clipping preview is showing the design clipped along the top, bottom, or sides where you do not want it to clip.

Cause: Incorrect fabric edges were set, the design was placed outside of the safe area, or the software is struggling to track the location of the machine on the frame.

Solution:

- The software clips the design anywhere that the design runs up against the fabric edges. If you set your fabric edges incorrectly, the software will think there are edges where there actually aren't any. Go back and re-select your fabric edges, making sure to choose the correct edge button for the section of fabric you're working with. See the on-screen tutorials or the printed Quick-Start Guide.
- If you did select your fabric edges correctly, the safe area might have been set too close to the fabric edges. Go back to the first screen for setting the safe area and reset your safe area further away from the fabric edges.

My rows aren't sewing evenly.

Problem: The design rows are not evenly spaced or are slanting into or away from each other.

Cause: The marks were not used properly when placing rows of the design, the program was reset and a different spacing was entered than was initially used, or the belts are loose.

Solution:

- Make sure the needle punctures the stickers when marking for your next row, and make sure the needle is directly over the puncture in the stickers when you are placing your design.
- If needed, pin down stickers to keep them from falling off when you shift your fabric.
- Record your design height and spacing values so that you can apply them if there is an unexpected shut down.
- Check that the belts going across the frame are taut and tighten them if they are not. See your QCT hardware (formerly called QuiltMotion) manual for more information.

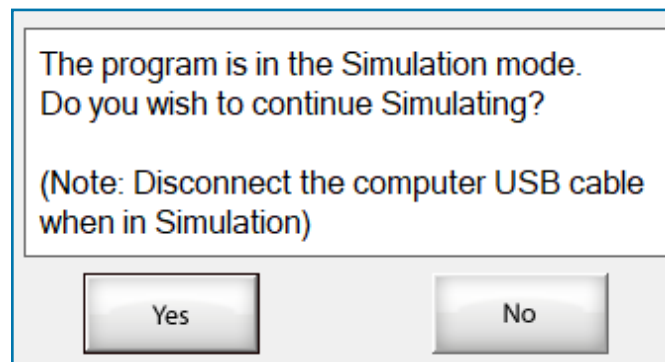
Getting Started with QCT6 Edge-to-Edge – Explanation of Pop-Up Messages (cont.)

Explanation of Messages and Pop-ups

When quilting, messages might appear (pop up) if something went wrong or the software needs additional information before it can proceed. **IMPORTANT:** Read all messages carefully before selecting any of the options they provide.

The following are messages you might encounter and an explanation of what they mean:

The Program is in Simulation Mode

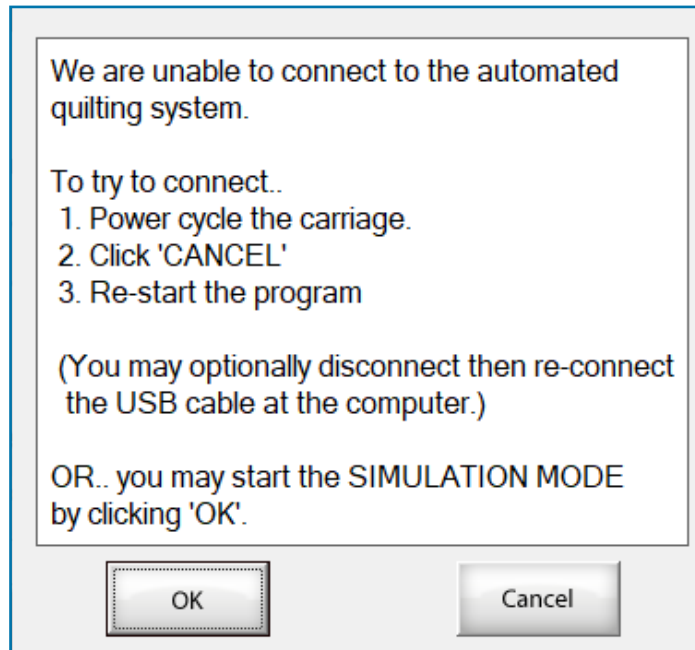


Cause: This message appears when you open up the software and it was last used in Simulation mode. In Simulation mode, you can run through the software without quilting or moving the machine.

Actions: Press **Yes** to continue in Simulation mode, or press **No** to leave Simulation mode so that you can quilt.

- **Note:** If you select **Yes**, an additional message appears telling you to disconnect your USB cable. Make sure your tablet is not plugged into the motor plate or machine before tapping **OK**.

Unable to Connect to the Automated System



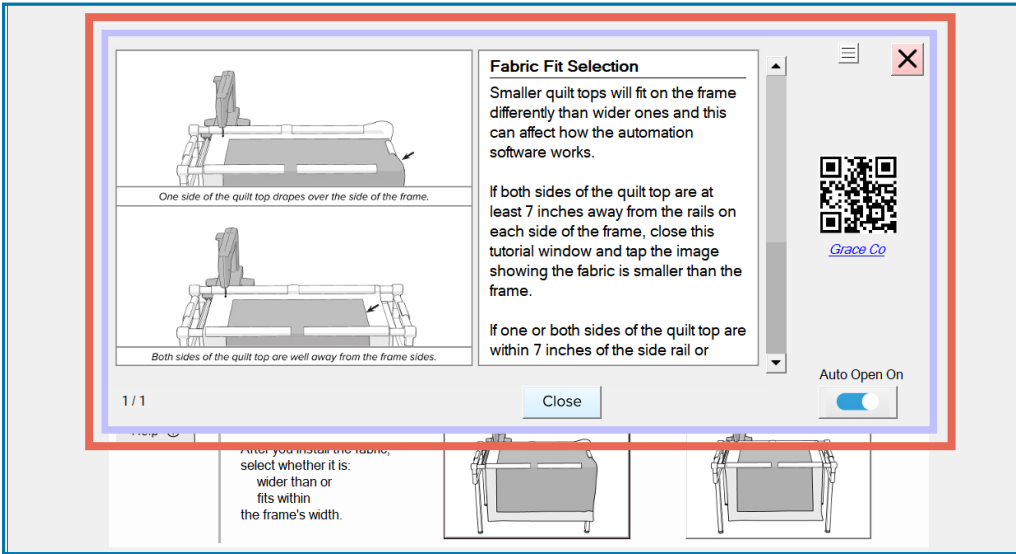
Cause: This message appears when the QCT software on the tablet and the QCT hardware (motor plate) can't communicate, usually due to a loose cable.

Actions: Pressing **OK** opens QCT in Simulation mode, where you can run through the software without quilting. Pressing **Cancel** closes the program.

- **Note:** See Troubleshooting Common Issues on page 44 for details on restoring the connection between the tablet and the motor plate so that you can quilt.

Getting Started with QCT6 Edge-to-Edge – Explanation of Pop-Up Messages (cont.)

Tutorial



Note: Information displayed differs based on which screen the tutorial is accessed from.

Cause: This message window appears when you go to a new Edge-to-Edge screen and **Auto Open** is toggled to **On**. The displayed tutorial information is different for each screen.

Actions: To disable the tutorial from appearing each time you move to a new screen, toggle the **Auto Open** to **Off**. The tutorial can be accessed again at any time by pressing **Help** on the bottom of the screen. To close the tutorial and continue quilting, tap the red **X** in the top left corner or press **Close**.

Select a Design

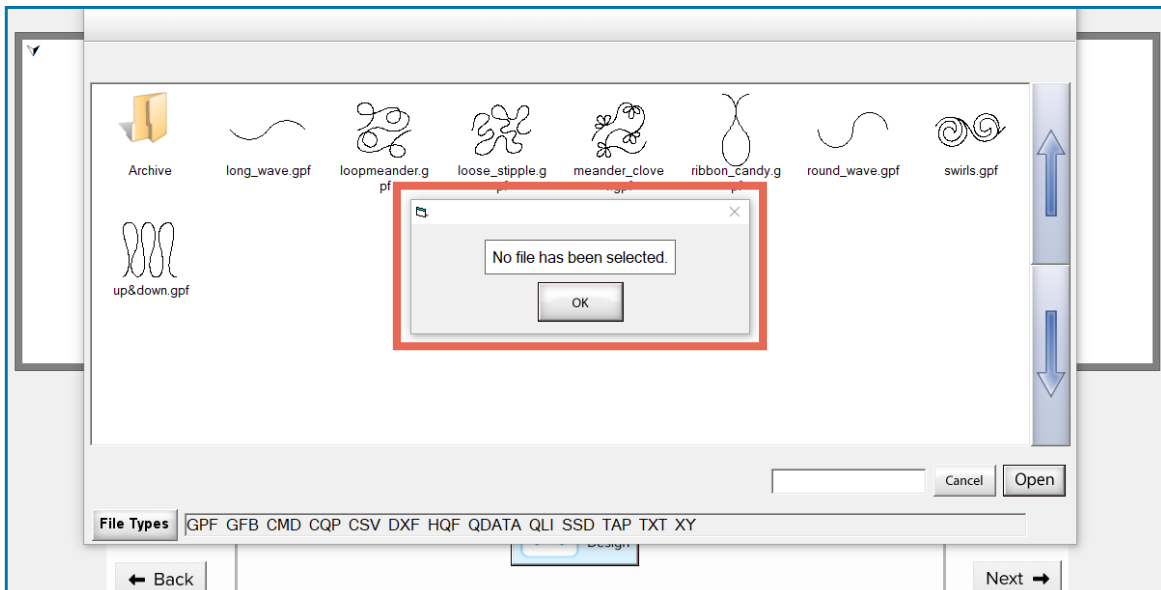


Cause: This message appears when you tap **Next** on the Select a Design screen without having a design selected.

Actions: Tap **OK** to close the message, and then tap **Select Design** to pick a design.

Getting Started with QCT6 Edge-to-Edge – Explanation of Pop-Up Messages (cont.)

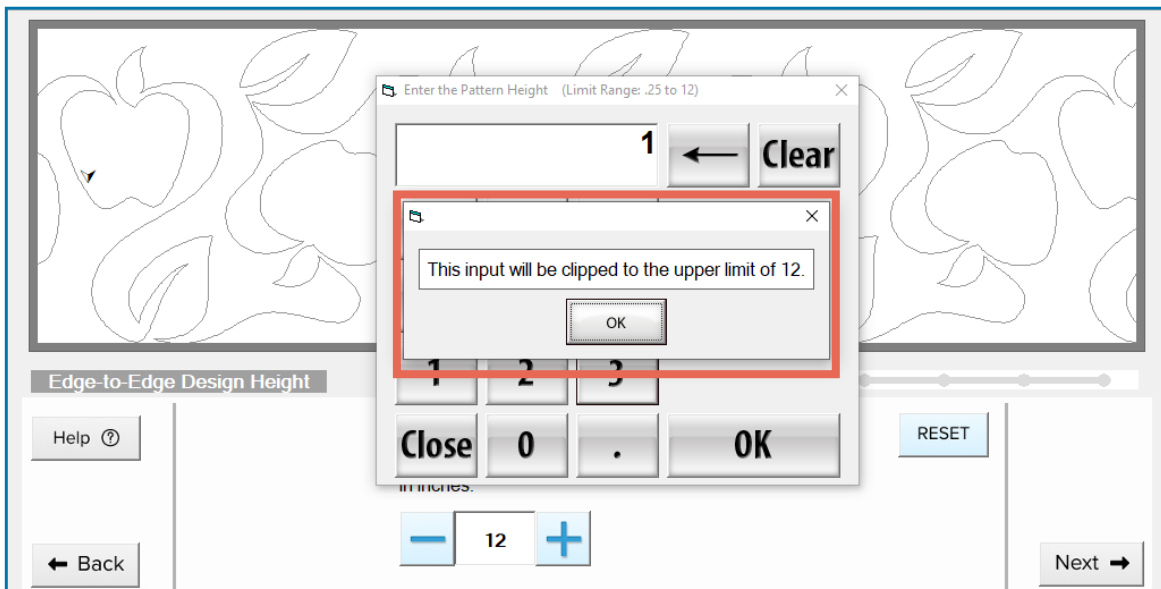
No File Selected



Cause: This message appears in the design selection screen if you press **Open** without having a design highlighted.

Actions: Tap **OK** to close the message. Choose a **design** file in the window and tap it to highlight it. Then press **Open** again.

The Input Will Be Clipped (Upper Limit)

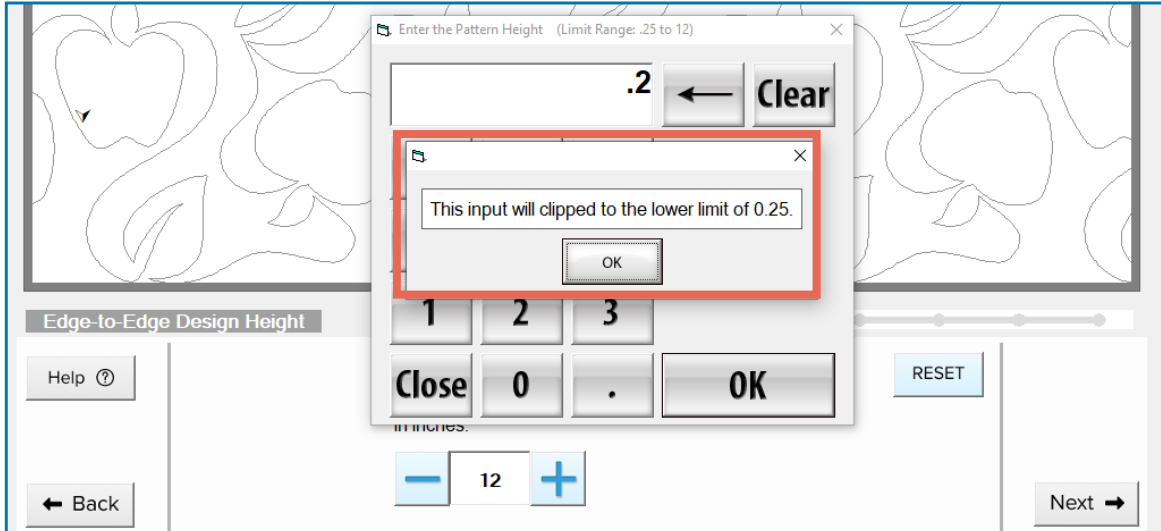


Cause: This message appears when an unrealistically high value has been entered into the number box. For example, if your machine has a 10-inch throat space and you enter a design height that is over 10, this message appears.

Actions: Tap **OK** to close the message. Choose a number that is at or lower than the upper limit number in the message.

Getting Started with QCT6 Edge-to-Edge – Explanation of Pop-Up Messages (cont.)

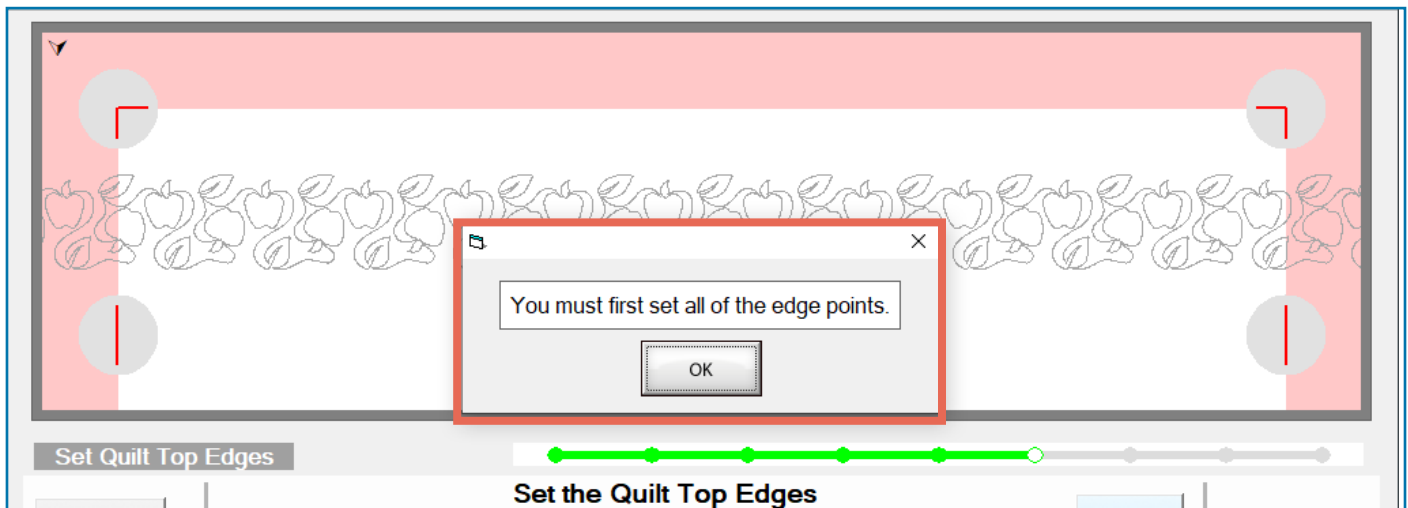
The Input Will Be Clipped (Lower Limit)



Cause: This message appears when an unrealistically low value has been entered into the number box. For example, this message appears if you set a design height of less than a quarter inch.

Actions: Tap **OK** to close the message. Choose a number that is at or higher than the lower limit number in the message.

Set All Edge Points

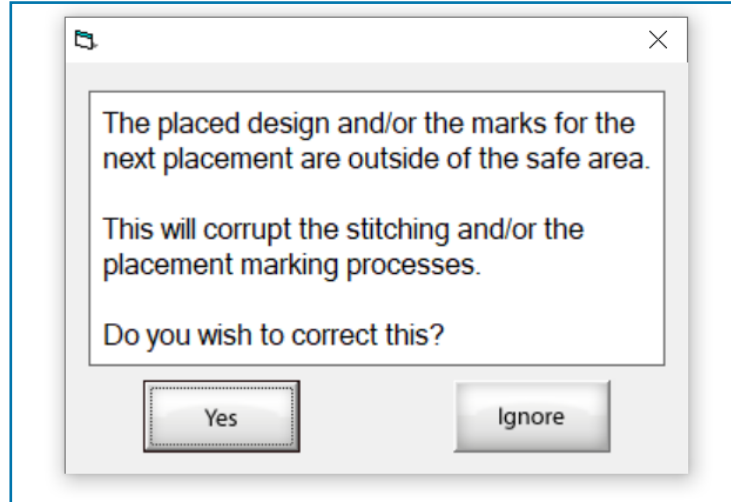


Cause: This message appears when you tap **Next** on the Set the Quilt Top Edges screen before you have set all the fabric edge nodes.

Actions: Tap **OK** to close the message. Move the machine to each of the corresponding edge points and tap the gray node until it turns green.

- **Note:** For more information, tap **Help** to open the tutorial. You can also review the printed Quick-Start Guide.

Design Placed Outside Safe Area



Cause: This message appears after tapping **Next** on the Place the Edge-to-Edge Design screen if the design was placed outside of the safe area or the marks for your next row would need to be placed outside the safe area.

If the design is placed outside of the safe area, the software might clip the design somewhere you did not intend. This means that parts of the design might be cut off, with large flat lines stitched instead.

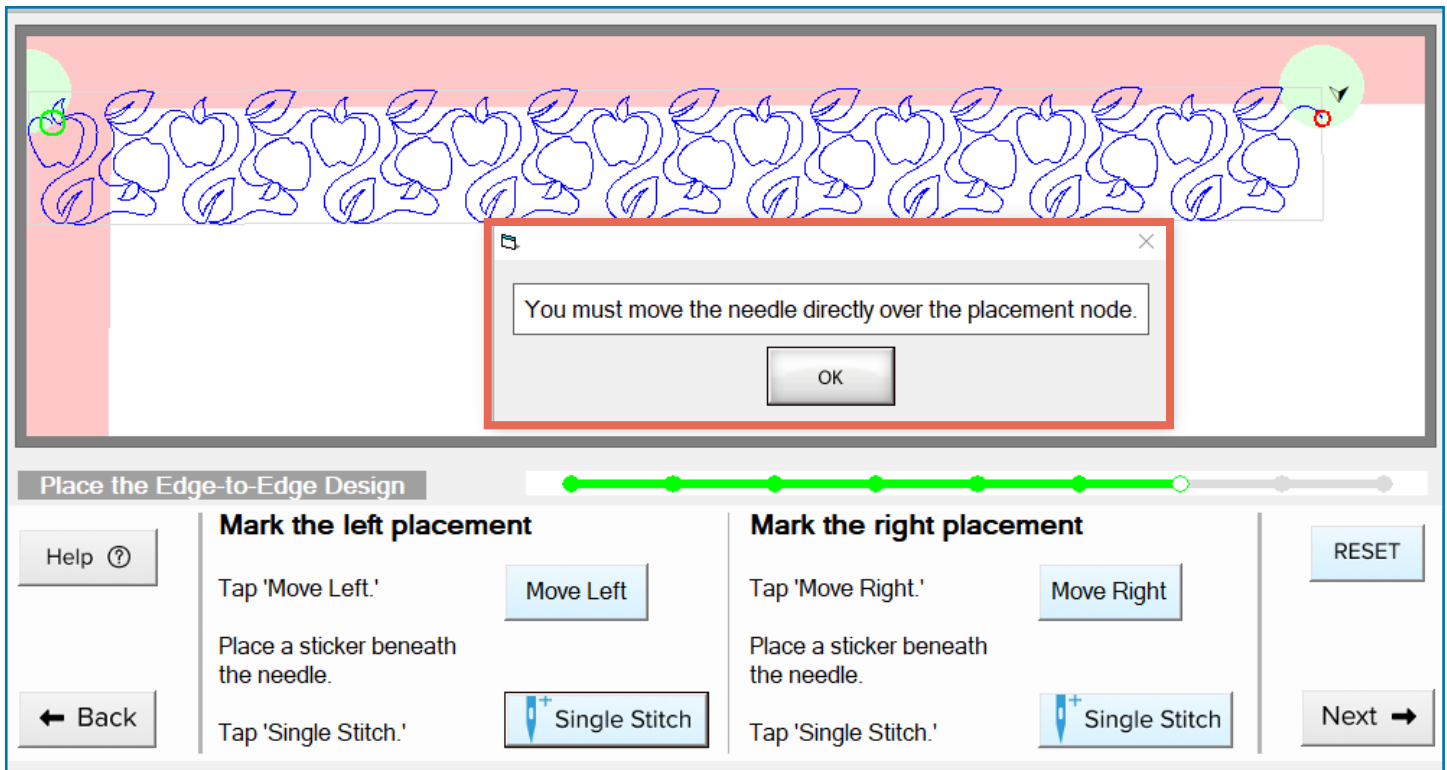
If the next row of marks need to be placed outside the safe area, the machine will not be able to move to the location of the next marks and so you will not be able to place your marks. Without marks, you will struggle to correctly place your next row of designs.

Actions: To close the message and correct the problem, tap **Yes**. If you are not concerned about your design clipping or placing the next row of marks, press **Ignore**.

- **Note:** See “Troubleshooting Common Issues” on page 44 for details on correcting the problem.

Getting Started with QCT6 Edge-to-Edge – Explanation of Pop-Up Messages (cont.)

Move the Needle Directly Over the Placement Nodes



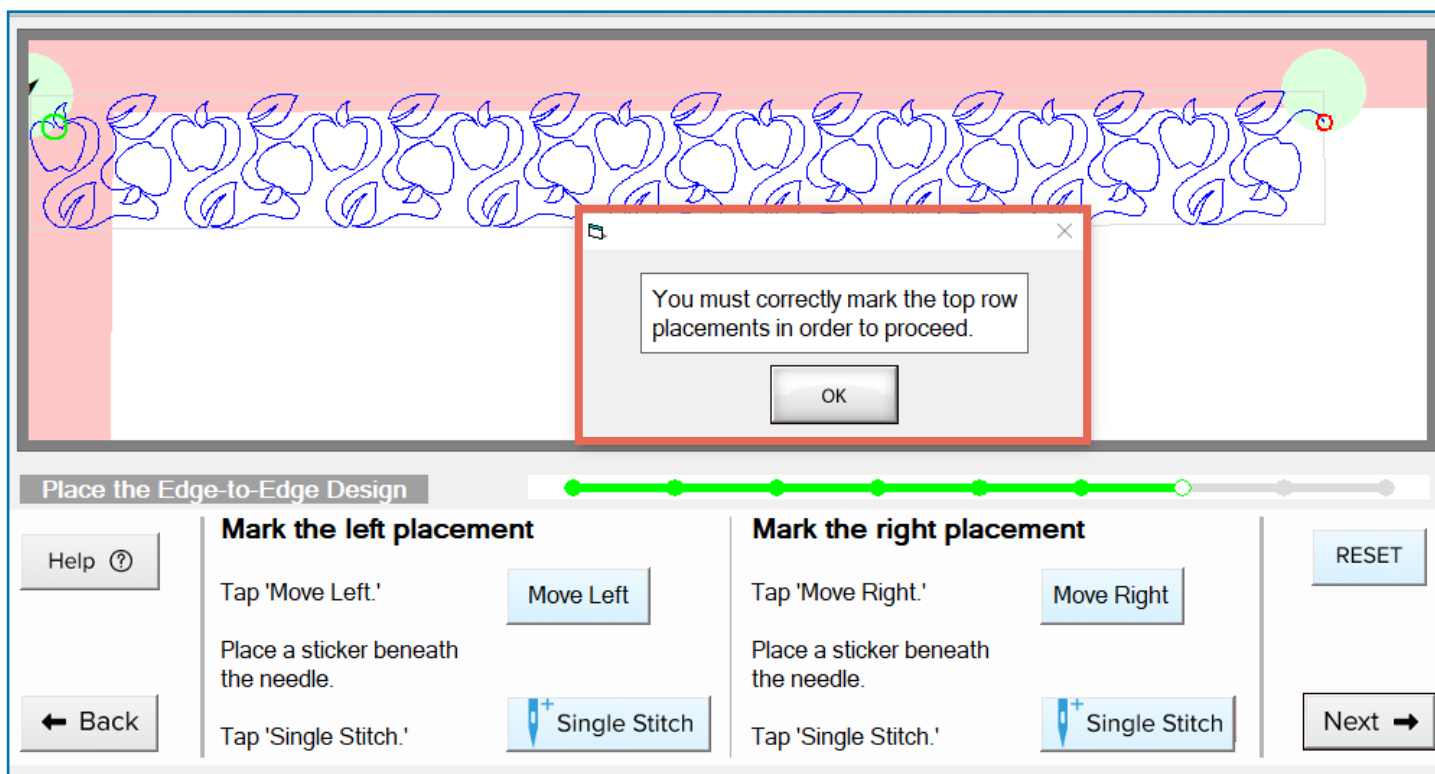
Cause: This message appears when you tap either **Single Stitch** button without first using **Move Left** or **Move Right** to align the needle over the placement point. The needle must be aligned with the left placement point before you can tap the left **Single Stitch** button and you must be directly over the right placement point before tapping the right **Single Stitch** button.

Actions: Tap **OK** on the message. If you'd like to change your fabric edges, tap **Back**. Otherwise, complete the following steps:

- 1 Tap **Move Left** to move the machine over the top-left placement point.
- 2 Apply a sticker to the quilt, under the hopping foot, and press **Single Stitch**.
- 3 Press **Move Right**. The machine moves to the top-right placement point.
- 4 Apply a new sticker to the quilt, under the hopping foot. Tap **Single Stitch**.
- 5 Tap **Next** when finished.

Getting Started with QCT6 Edge-to-Edge – Explanation of Pop-Up Messages (cont.)

Correctly Mark the Top Row Placements



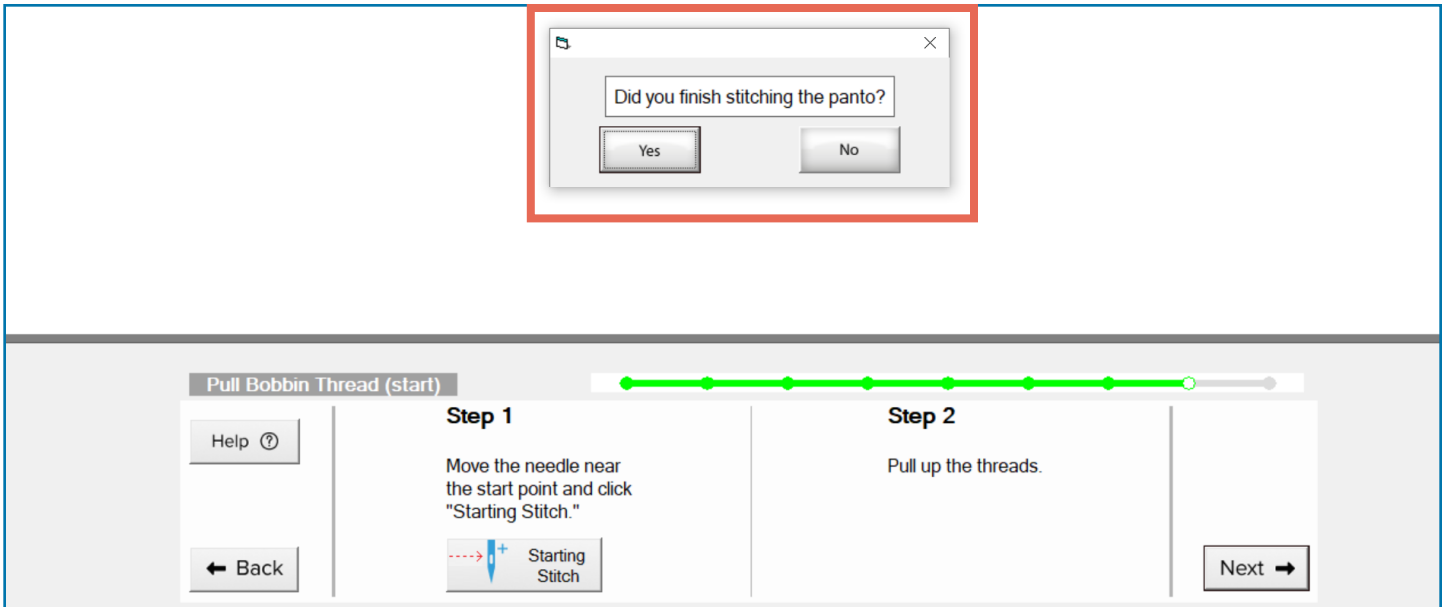
Cause: This message appears when you hit **Next** on the top-row Place the Edge-to-Edge Design screen before completing the necessary steps on the screen.

Actions: Tap **OK** on the message. If you'd like to change your fabric edges, tap **Back**. Otherwise, complete the following steps:

- 1 Tap **Move Left** to move the machine over the top-left placement point.
- 2 Apply a sticker to the quilt, under the hopping foot, and press **Single Stitch**.
- 3 Press **Move Right**. The machine moves to the top-right placement point.
- 4 Apply a new sticker to the quilt, under the hopping foot. Tap **Single Stitch**.
- 5 Tap **Next** when finished.

Getting Started with QCT6 Edge-to-Edge – Explanation of Pop-Up Messages (cont.)

Stitching Panto

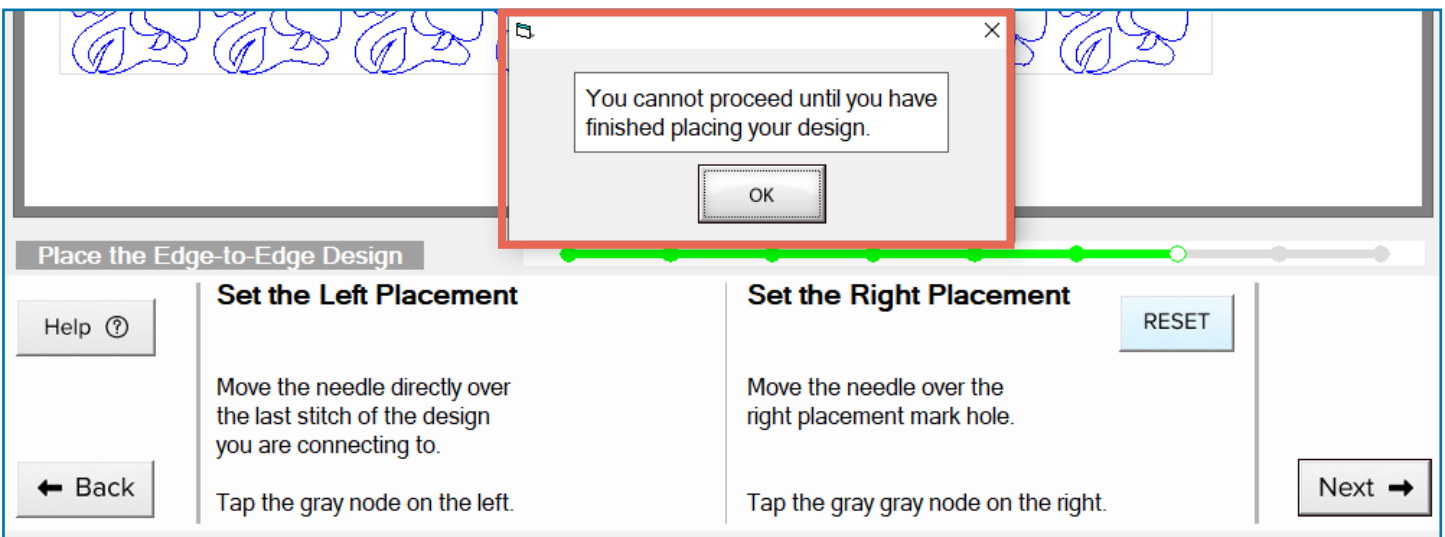


Cause: This message appears if you press **Back** or the **X** button on the E2E Start Stitching screen.

Actions: If your design row is fully stitched out and you'd like to mark your next row, tap **Yes**.

If you did not fully stitch out your design, tap **No**. The Place the Edge-to-Edge Design screen will open and you can either re-place your design or press **Next** to return to E2E Start Stitching.

Place the Design

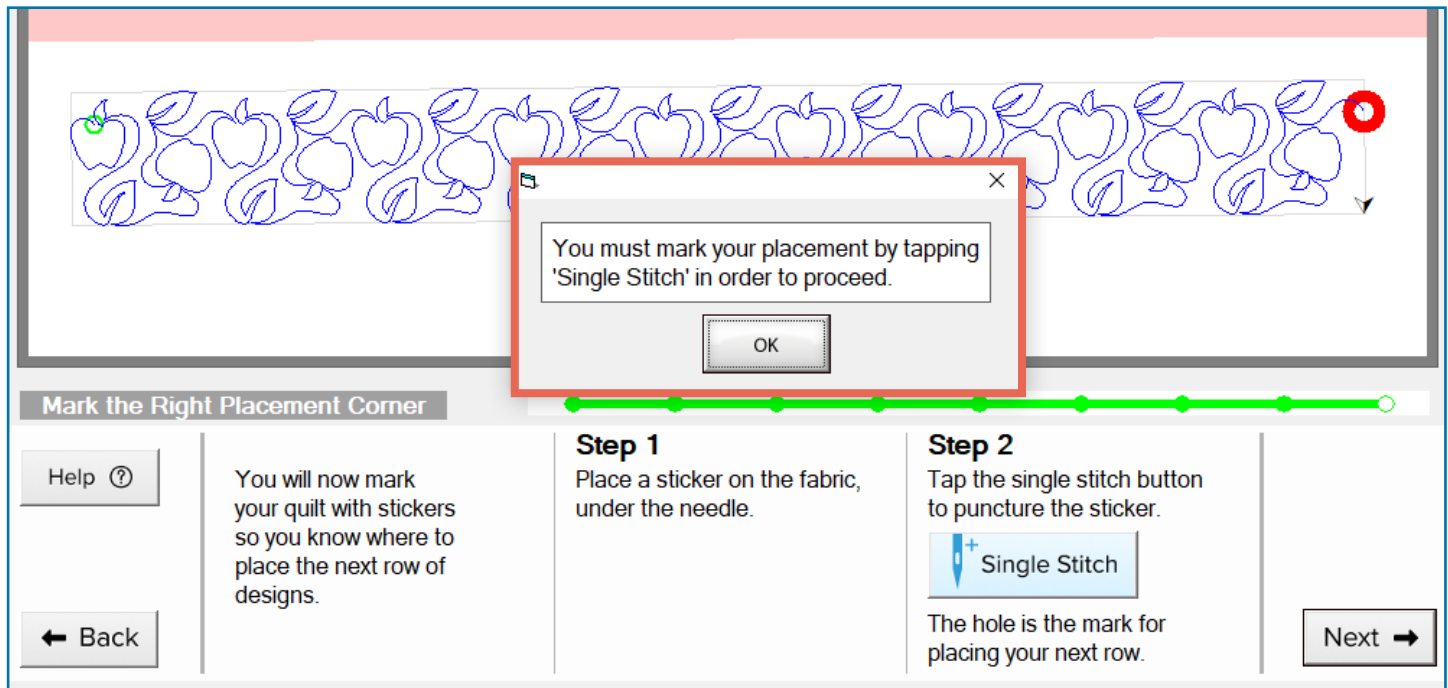


Cause: This message appears if you press **Next** before placing your design.

Actions: Finish placing the design. Both on-screen nodes in the preview window must be green. See the Quick-Start Guide for detailed steps on placing additional rows of the design.

Getting Started with QCT6 Edge-to-Edge – Explanation of Pop-Up Messages (cont.)

Placement Marks

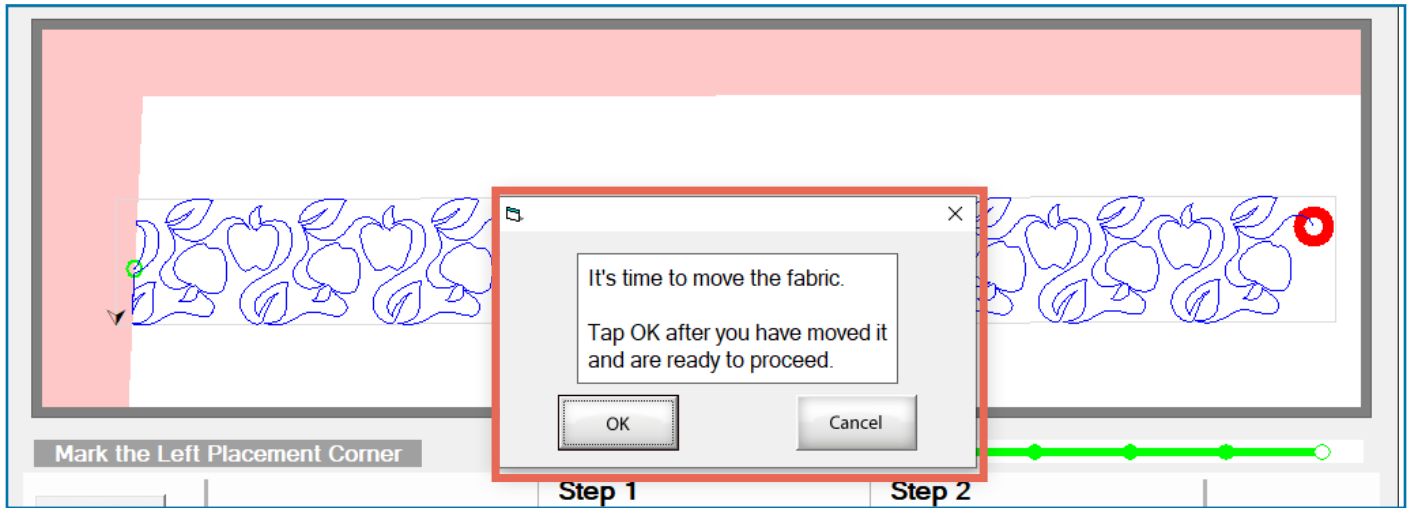


Cause: This message appears when you hit **Next** on a marking screen before tapping Single Stitch first.

Actions: Tap **OK**. Apply a sticker to your quilt, underneath the machine hopping foot and then tap **Single Stitch** to puncture the sticker. Tap **Next** when finished.

Getting Started with QCT6 Edge-to-Edge – Explanation of Pop-Up Messages (cont.)

It's Time to Move the Fabric



Cause: This message appears when you tap **Next** on the Mark the Left Placement Corner screen and you have run out of quiltable space in the safe area.

Actions: Tap **OK** to continue or **Cancel** to return to the Mark the Left Placement Corner screen if you would like to replace a mark.

Move your fabric to a new unquilted section. Don't forget to tack down any new edges.

QCT6 Edge-to-Edge: Continuing an Interrupted Row of Stitching

Instructions

Sometimes quilting can get interrupted before a row of stitching is complete, such as if a bobbin runs out or the computer has an unexpected shutdown. To get back to quilting from where you left off, take the following steps.

- **Note:** These steps are for QCT6 Edge-to-Edge. If you are using QCT6 Plus or QCT6 Pro, see the software help files for assistance with repairing a pattern.

IMPORTANT: If something goes wrong while your machine is quilting or moving, press **STOP** on the screen to halt the machine.

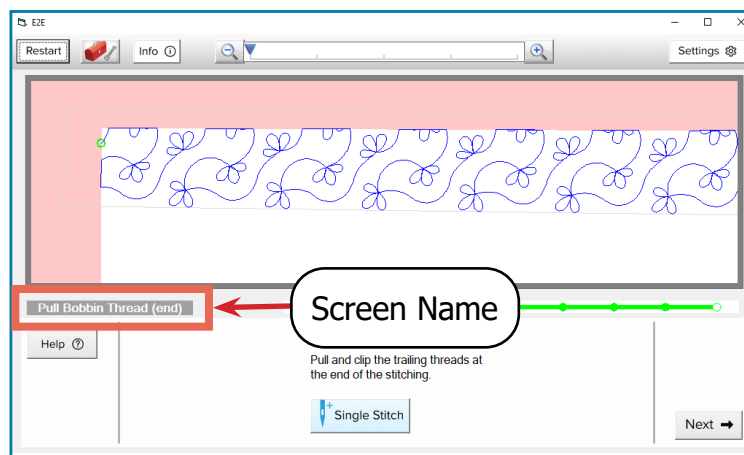


- 1 Determine the cause of the interruption or problem.

For example, if your stitches have stopped part way through the row, but the needle kept moving, you might have run out of bobbin thread. You must install a full bobbin into your machine before you can continue.

Before you can repair your design, correct any problems that caused the interruption.

- 2 Note which screen you are on. The **screen name** is found in the gray bar underneath the preview window.



QCT6 Edge-to-Edge: Continuing an Interrupted Row of Stitching (continued)

- If you are on E2E Start Stitching, E2E Paused, or E2E Finished, go to "Resume Quilting from a Quilting Screen" on page 61.
- If you are on Pull Bobbin Thread (end), Mark the Last Clipped Stitch, Mark the Right Placement Corner, or Mark the Left Placement Corner:
 1. Tap **Back** until you return to E2E Start Stitching.
 2. Then go to "Resume Quilting from a Quilting Screen" on page 61.
- If you are on any other screen (or QCT6 is closed), go to "Resume Quilting from a Restart" below.

Resume Quilting from a Restart

These instructions cover two scenarios:

1. The software was closed since the last time you quilted, either intentionally or unexpectedly.
2. You realized there was a problem with your last row of stitches *after* starting to place the next row.

In both cases, the software has lost some of the data it needs to successfully repair your design. Fill in the missing information by doing the following.

- 1 Proceed through the software to the Place the Edge-to-Edge Design screen, setting the design, design height, and design spacing to match previous rows.

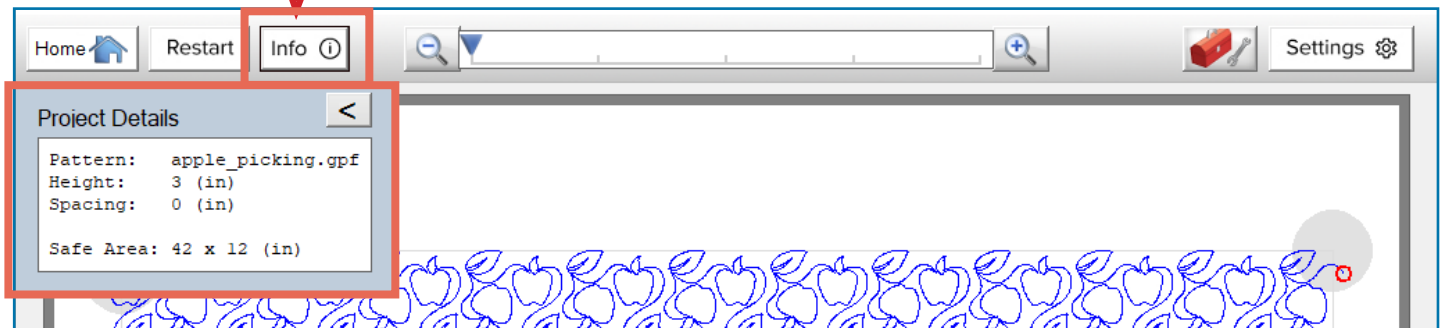


Note: If you do not know your design height or spacing, stitch out a couple of rows on scrap fabric using the numbers you think are close. Compare the results with the rows on your quilt to see how close your guess was. Adjust your numbers and try again until the designs on the scrap fabric are the same size and spacing as the designs on your quilt.

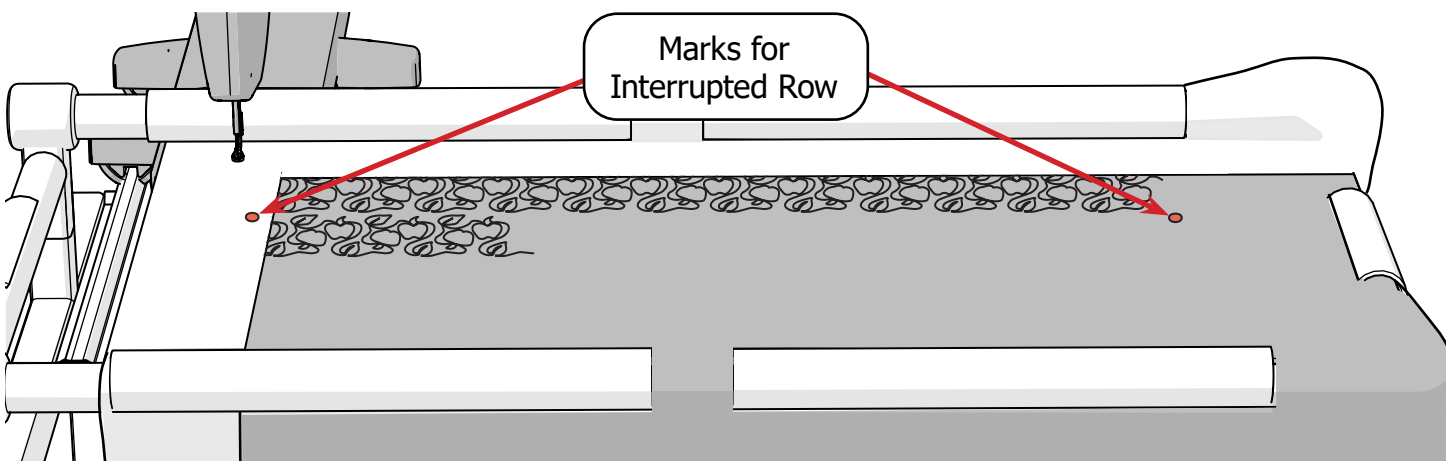
QCT6 Edge-to-Edge: Continuing an Interrupted Row of Stitching (continued)

- 2 Tap **Info** in the header to double-check that your design, height, and spacing are correct. If they are not, tap **Back** until you reach the screen needed to fix the setting. Then return to Place the Edge-to-Edge Design.

Tap **Info** to see the current project details.



- 3 Place your design using the **marks** (or other placement points if you're on a middle or right edge section of the quilt on a hoop frame) you had made to place the **interrupted row**. Tap **Next**.



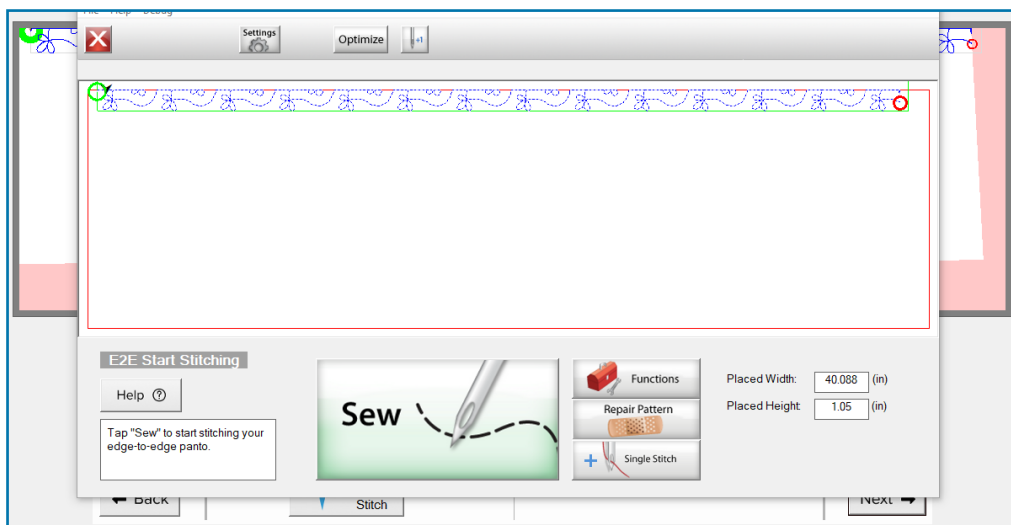
- **Note:** If you do not have marks (such as if they fell off), take the following steps:
 1. Using a sticker and a pen, make new marks where you think the marks for the interrupted row should be. Instead of puncturing the sticker with the machine needle, just draw a dot on it with the pen.
 2. Place your next row using the marks you just made.
 3. Attempt to follow the rest of the repair pattern steps. You might have to return to the Place the Edge-to-Edge Design screen and adjust your placement several times.

QCT6 Edge-to-Edge: Continuing an Interrupted Row of Stitching (continued)

- 4 If Pull Bobbin Steps is enabled in your settings, the Pull Bobbin Thread (start) screen displays. Do nothing on this screen and tap **Next**.

Note: If you accidentally press **starting stitch** on this screen, just move your needle a foot or so away from the stitch so the top thread is back on the top of the quilt and the bottom thread is back underneath the quilt. Press **Next**.

- 5 The E2E Start Stitching screen displays. Complete the steps in "Resume Quilting From a Quilting Screen" below.



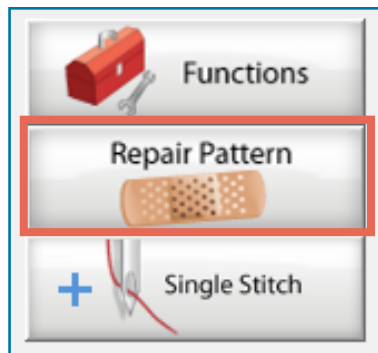
Resume Quilting from a Quilting Screen

In the quilting screens you can stitch out your design again. However, if you press **Sew** from the E2E Start Stitching screen, the automation software will start at the beginning of your design. You might end up stitching over the part of your design, doubling up on the stitch thickness in that area. If you press **Sew** from the E2E Paused screen, the software will continue stitching from the place you pressed **Stop**. This might be further along in the design than your break was, leaving an unstitched gap in the design.

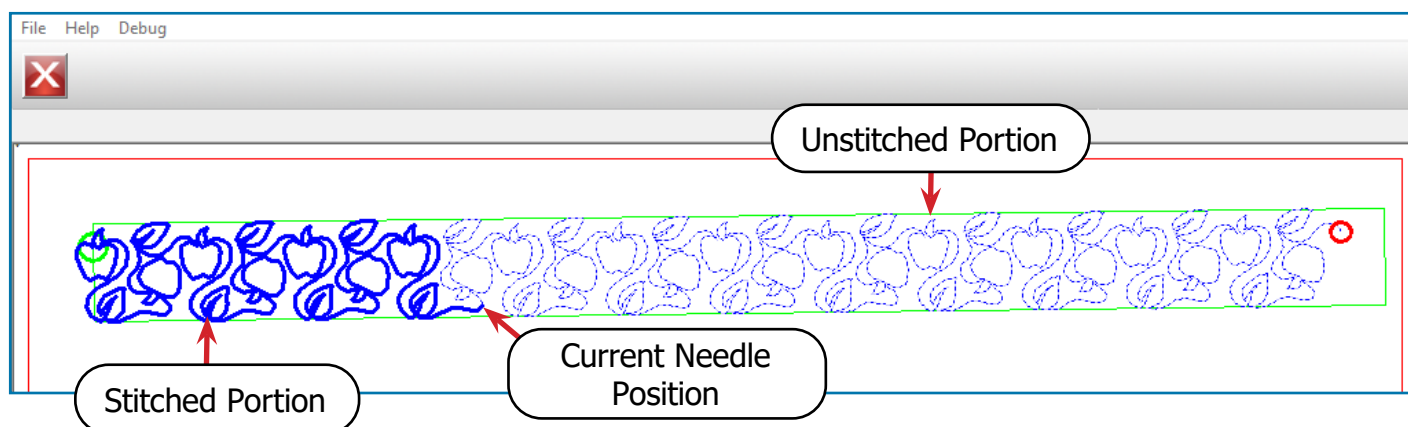
To guide the software to stitch in the correct place, use the **Repair Pattern** feature. This feature allows you to continue quilting from the break or interruption in your design.

QCT6 Edge-to-Edge: Continuing an Interrupted Row of Stitching (continued)

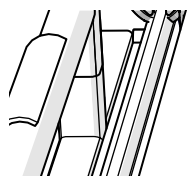
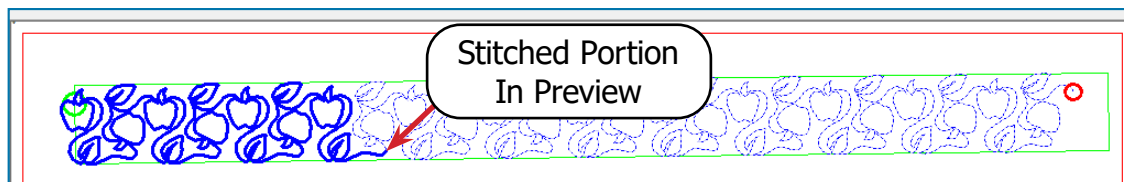
- 1 Tap **Repair Pattern**. The Repair Pattern screen opens, where you can pick the point you'd like to continue stitching from.



- 2 Move the needle over the last successful stitch on your quilt and tap **Closest Stitch**. Automation moves the needle over the stitch that is nearest to where you moved the needle. In the preview window on-screen, the software estimates the part of the design the needle is over.



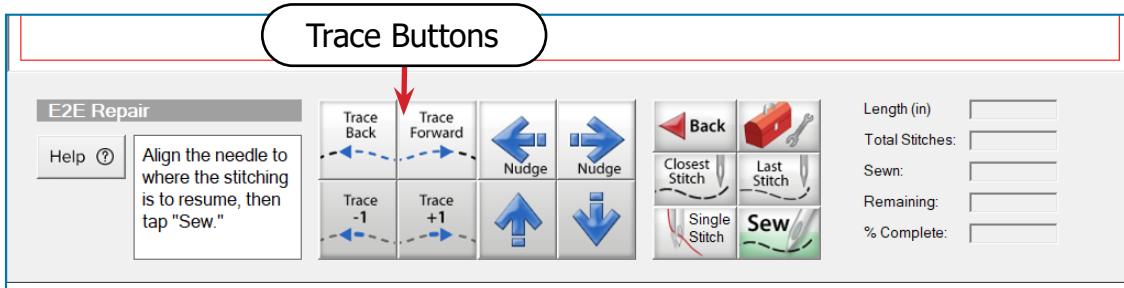
- 3 Compare the dark blue portion of the design in the preview window with what has been stitched out on your quilt. If the dark blue portion matches the stitched out portion of the quilt, continue to step 4. If it does not match, press Trace +1 or -1. As you trace forward, more of the design darkens in the stitched portion in the preview. As you trace backward, less of the design darkens.



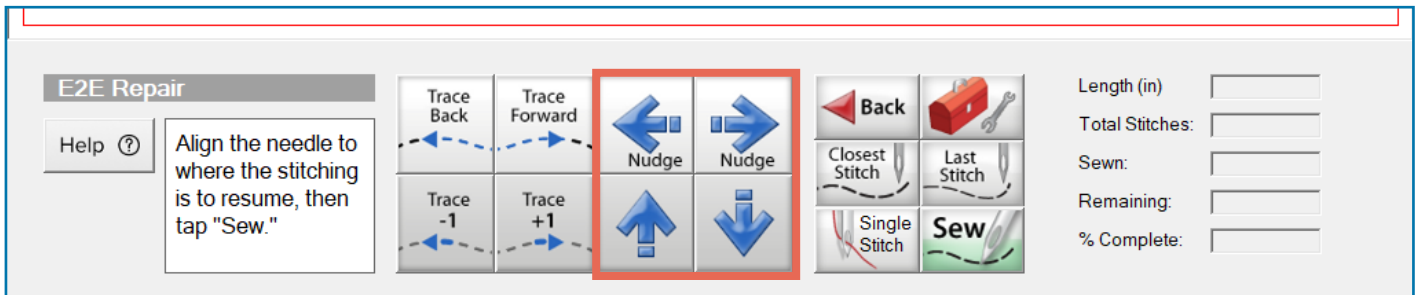
QCT6 Edge-to-Edge: Continuing an Interrupted Row of Stitching (continued)

- **Note: Trace Forward** and **Trace Back** will trace the needle over the design until you tap Stop on the screen. This is convenient if your design actually stopped more than dozen stitches away.

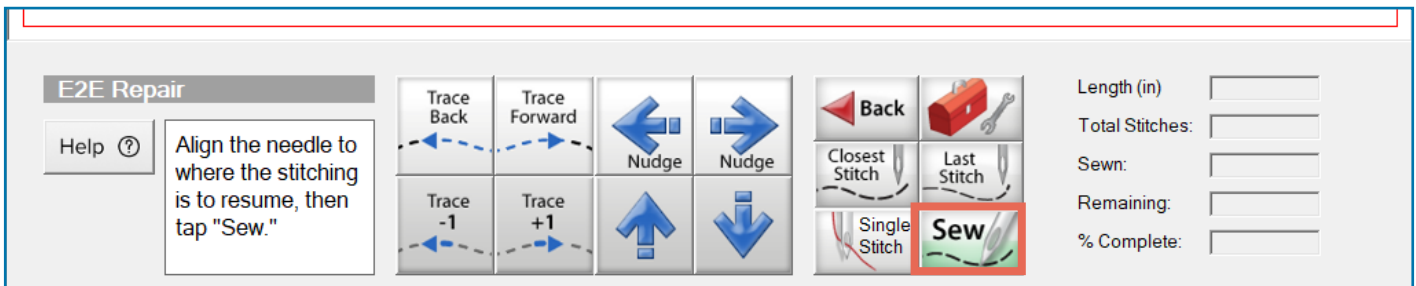
Pressing **Trace Back** will reverse the appearance of the stitched and unstitched portions in the preview. The unstitched portion will appear dark blue, and the stitched portion will become light dotted blue. Pressing **Trace Forward** will reverse the coloration again. Neither button alters which sections of the design the machine will stitch out.



- 4 You might find that when the preview on the screen matches the design you have stitched out on your quilt, your needle is no longer directly over the last stitch you made. If the needle is less than 1/2 inches from the last stitch, press the **Nudge arrow** buttons until the needle is directly over the last stitch. If the needle is 1/2 or more inches away from the last stitch, the design was placed incorrectly. This is especially likely if you placed the design without placement marks. Press back until you return to the placement screen and start over at step 3 on page 60.



- 5 When the on-screen preview matches your stitched out design and your needle is located directly over the last stitch, tap **Sew**.



QCT6 Edge-to-Edge Continuing an Interrupted Row of Stitching (continued)

6 Result: Your design is successfully repaired. Continue through the quilting process as normal.

Tip: For more detailed information on the tools and options in Repair Pattern, see the help guides that came with your software. These are found by tapping **Help** on the home screen.

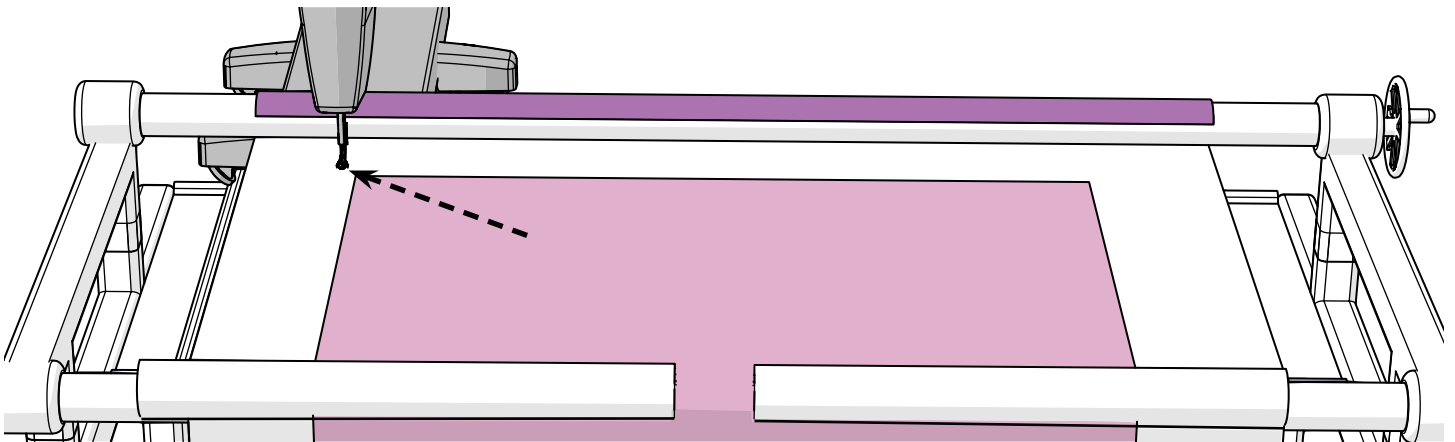


Edge-to-Edge: Manually Placing Your First Row of Designs

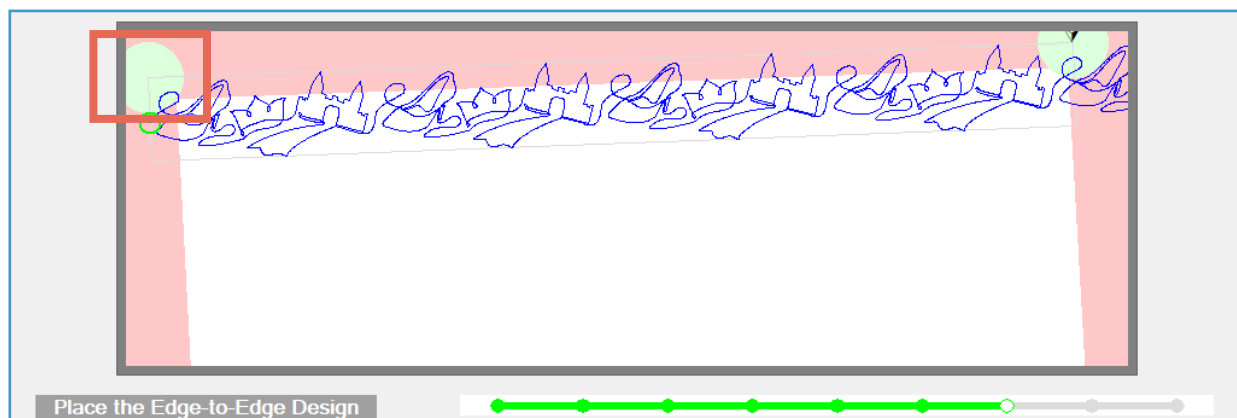
Instructions

The software automatically places the first row of your design on an optimal location on your quilt. However, you can override this placement manually if you prefer. Take the following steps:

- 1 Move the machine's needle directly over the place you would like to be the top-left corner of the design. We recommend setting this at least a quarter-inch up and to the left of the top-left corner of your quilt.

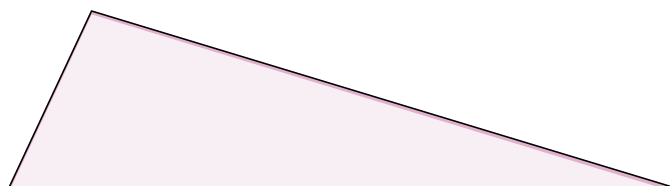
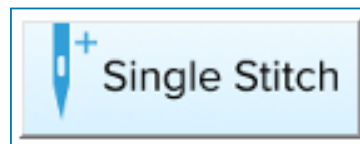
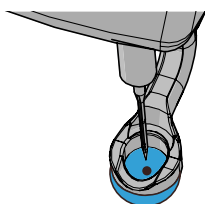


- 2 Tap the green node on the left side of the screen. The design in the preview window adjusts to the new placement.

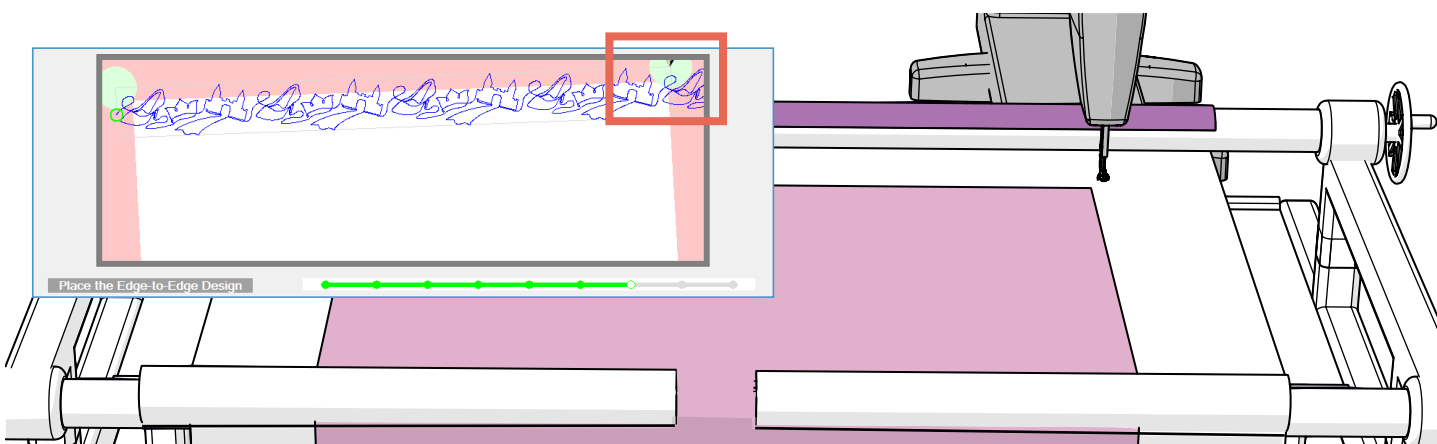


Edge-to-Edge: Manually Placing Your First Row of Designs (continued)

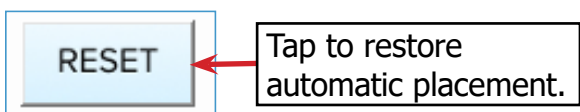
- Place a sticker on the quilt, under the hopping foot and use Single Stitch to puncture the sticker. Now you've marked on your left corner placement on your quilt for your first row.



- Repeat these steps using the green node on the right side of the screen to set the right placement corner. We recommend positioning the needle on the right side of the quilt, with the needle positioned at least a quarter inch up and to the right of your quilt top's right corner.



- Note:** If you would like to go back to the auto placement method, press **Reset** on the screen. This also returns your placement nodes to the preview window if something goes wrong when you set your placement manually.



Appendix

Connecting to the Internet

Parts & Tools Needed:

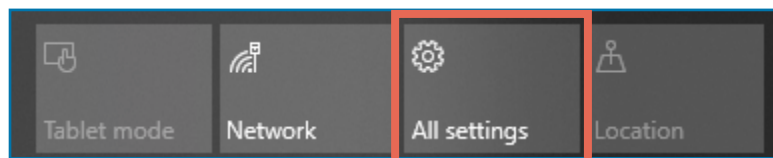
Your Tablet



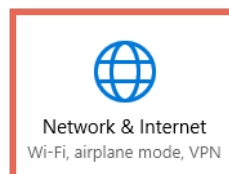
Instructions

To connect to the Internet, take the following steps:

- 1 Swipe in from the right on your tablet to open the Action Center. Tap **All Settings**.

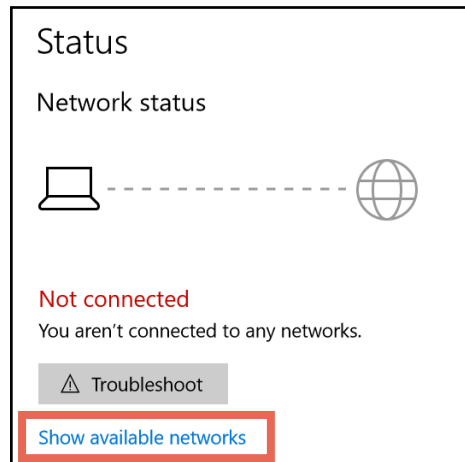


- 2 Select **Network & Internet**.

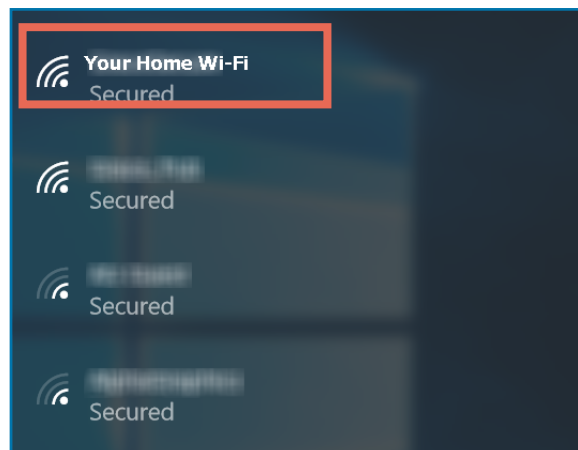


Connecting to the Internet (continued)

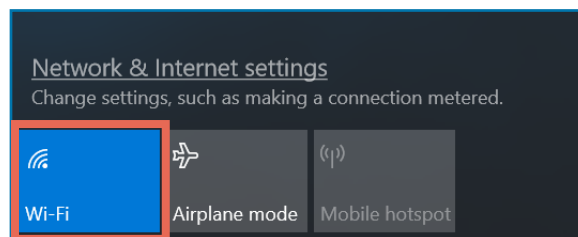
- 3 Under Status, tap the link that says **Show available networks**.



- 4 The list of available Wi-Fi networks appears. Locate your local Wi-Fi connection and select it. If you have never connected to this network, Windows will prompt you for your Wi-Fi password. Enter in your password and press **Connect**.



- 5 If your **Wi-Fi** button is grayed out, tap on the button to enable the Wi-Fi. If your tablet has a dedicated button or switch to enable Wi-Fi, you must turn that on.



Additional Resources

To better assist you, especially outside of business hours, we have compiled a list of resources you can turn to for help or advice with your automated quilting. Please check out the following pages!

Facebook Groups

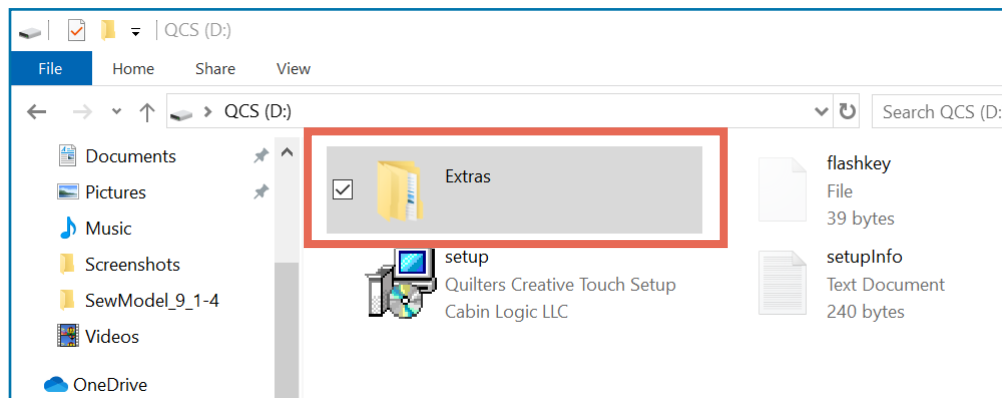
- Quilter's Creative Touch:
<https://www.facebook.com/groups/QuiltersCreativeTouch/>
- Quilting with Grace:
<https://www.facebook.com/groups/2063833633689529/>

Youtube Channels

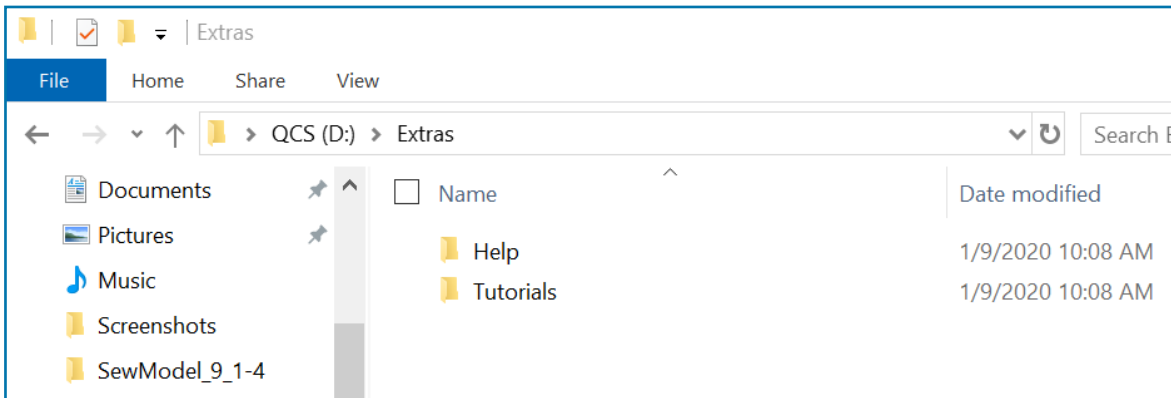
- dfgeorge:
<https://www.youtube.com/channel/UCGi3j7s49a3c0I8ViYRn4Hw>
- Sandra Wilbourne:
<https://www.youtube.com/channel/UCCA4XcufItH6wstZP09pNHA>

Thumb Drive

The thumb drive that came with your Quilter's Creative Touch software has additional help and tutorials saved onto it. These can be found by selecting **Extras** from the thumb drive explorer.



Tap an icon to open it.



Glossary

Automation: Another term for computerized quilting. The software tells the sewing machine where to stitch.

Edge-to-Edge: The software tool in QCT6 Edge-to-Edge that allows you to stitch a pantograph design across the quilt.

Hoop Frame: A quilting frame where the quilt is manually moved to a new section of quilt. The quilt size is not limited by the size of the frame.

Panto: A shortening of the word 'pantograph.'

Pantograph: A design that is repeated as it is stitched out in a row across the quilt. These can be paper or electronic.

Place a design: Tell the software where to stitch out a design on the quilt.

QCT6: Acronym for Quilter's Creative Touch 6, the automated quilting software you are using.

Quilt Top: The pieced portion of your quilt that makes the top layer of the quilt sandwich (over the batting and backing).

Rolling Frame: A quilting frame that allows you to roll through the different sections of your quilt. The maximum quilt width is limited by the size of the frame.

Safe Area: The location on the frame that the machine is able to stitch without hitting rails, sides, or sewing off the edges of the fabric.

Zone: The portion of a quilt on a frame that can be quilted without moving the fabric.



www.graceframe.com

1-801-485-6688