



Height Adjustable Table

Congratulations on the purchase of your new Kangaroo Cabinets product. Every effort has been taken to ensure your complete satisfaction with this custom designed product.

For your convenience it is supplied in three ready to assemble cartons.

Helpful Assembly Hints

Read the instructions carefully before starting. Check to see that all parts are included. Work in a spacious area preferably on a carpet or soft surface. You will need a Metric allen wrench set for the assembly(see last page for picture of allen set). Make sure you tighten all screws and bolts securely.

Warranty Information

Kangaroo Cabinets warrants this product to be free from faulty parts or workmanship for a period of 5 years from the date of shipment from our facility. The warranty covers manufacturer's defects and a 15-day warranty for any shipping damages.

The warranty does not cover freight charges for any defects noticed after the first year of use. Kangaroo will replace parts for manufacturers defects, but freight for these parts will be the responsibility of the customer requesting parts after the first year of ownership.

Under the terms of this warranty the repair or replacement of any parts shall be at the discretion of the company or their designated representatives. The warranty does not cover damaged caused by abuse, alteration, accident or neglect. The warranty does not cover damage caused as result of moving the table when it is fully loaded. Remove your machine from the table when moving the table or moving the platform.

Replacement Part Shipping Policy: To help protect our valuable resources, we ship all replacement parts out at the same time. This procedure lessens the use of packaging materials and fossil fuel used in transportation in order to reduce pollution. Please help us in this endeavour by reviewing ALL parts in ALL boxes for damage before calling or e-mailing us to report damage. We adhere to our environmental philosophy by only shipping replacement parts out 1 time for free within the first year of ownership. Future parts request will be billed at the customer's expense.

**Questions? Call us at 1-800-533-7347 press 1
E-Mail: cs@arrowcabinets.com**

**Check out our website for assembly videos, pictures and frequently asked questions
www.kangarookabinets.com**

Tasmanian Height Adjustable Table Model #K9106 Assembly Instructions



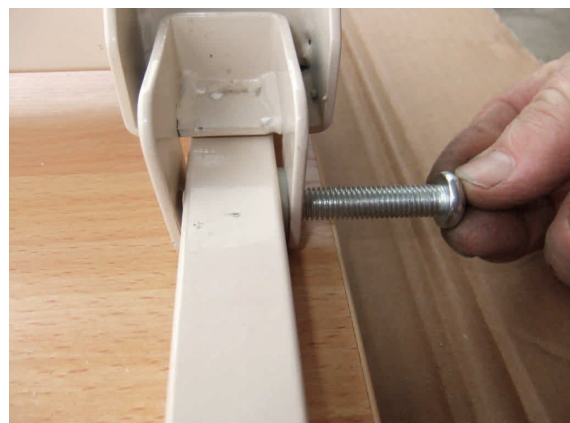
1. Leg — sub assemblies



2. Support Frame — sub assembly

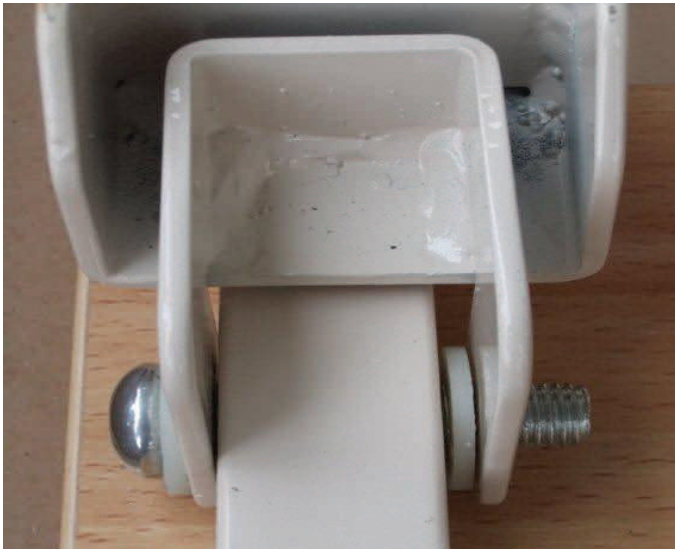


3. Locate support frame onto the underside of top panel

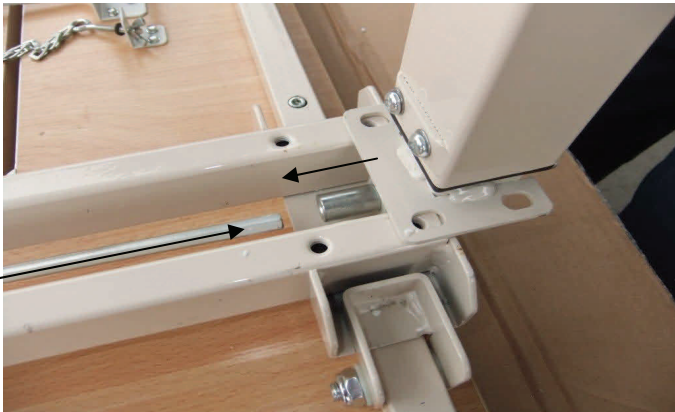


4. Fix support frame to top panel with bolt and washers

Tasmanian Height Adjustable Table Assembly



(Close up support frame and top panel assembly)



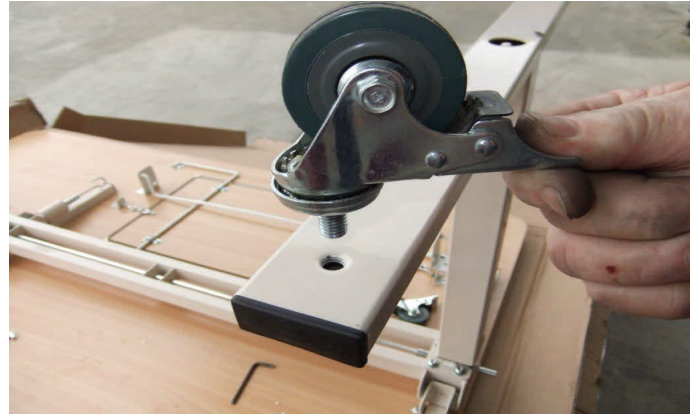
5. Slide leg into the support frame bracket
 Slide hexagonal rod into hexagonal insert on leg
 Locate 4 holes on leg flange with support bracket
(see close up below) leg with 2 silver rods at end is closets to lift



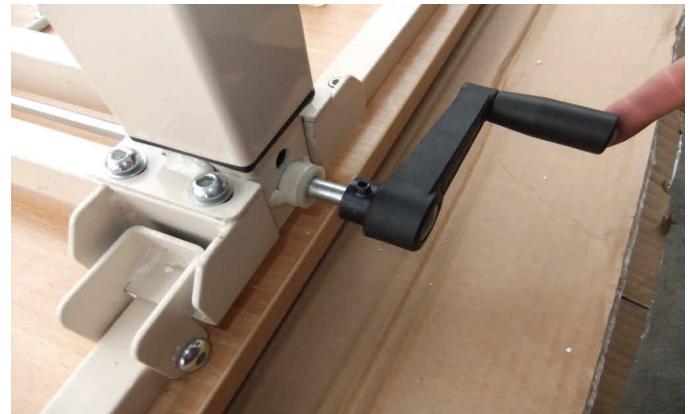
Another view of the leg and support frame assembly



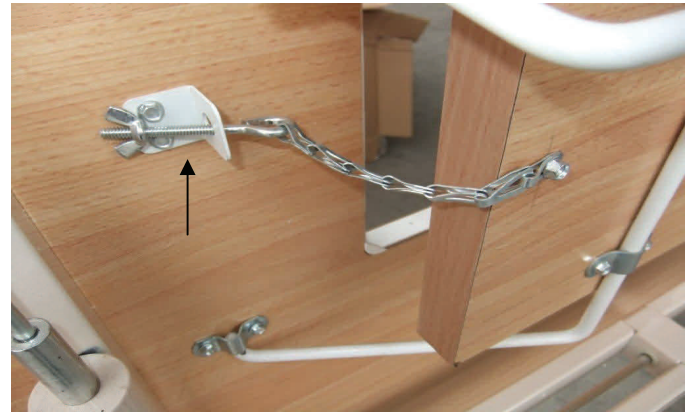
6. To install the cross bar you must remove the 2 bolts that are already in the leg at the top. You have been supplied with 2 longer bolts to allow you to install the cross bar onto the leg.



7. Add washer & screw castor into leg and tighten using spanner.



8. Place handle onto rod
 Line up grub screw with slot on rod and tighten



9. Height of platform is adjusted using wing nut or moving screw



10. We suggest applying silicon spray or WD40 into hole to lubricate winding mechanism for a smooth action.

Tasmanian Height Adjustable Table Assembly



From step 6 another view of how it will look when it is installed.

How to use the Mechanism in your new table:

1. This table offers 2 positions on its sewing surface. To move the platform down into the sewing well, press firmly down on the handle release. Press gently down on the wood platform as it sinks into place.
2. To move the platform back up to the flush position, pull the handle all the way forward listening for the handle to hit the wood top surface.

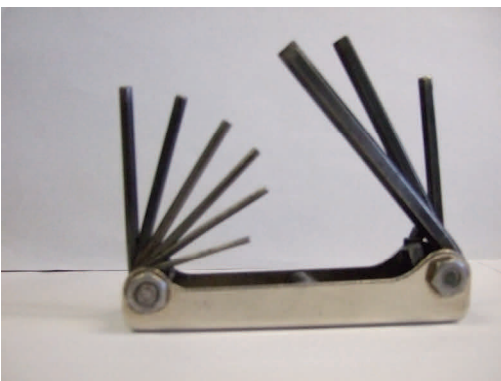
3. Never move the platform with your sewing machine on the platform. Always remove the machine as you move the platform up and down.

To adjust the height of the platform in the second position creating a flush surface:

1. Move the platform down into the sewing well as demonstrated in step 1 above.
2. Place your machine in the well. If your machine's sewing surface (the area on your machine where your machine's foot rests) is sitting below the edge of the table you will need to raise the platform. If your sewing surface is sitting above the edge of the table you will need to lower the platform.
 - a. **To lower platform:** Remove your machine from the platform and pull the handle forward to lock the platform in the top position.
 - b. Begin to tighten the bolt on the Eye-Hook located at the end of the chain under the top surface, until you achieve the proper height for your sewing machine. You may need to adjust this position several times before finding the correct position for your bolt.
 - c. **To raise platform:** Perform the same steps as above in a & b, but instead of tightening the bolt loosen the bolt. If after completing the above steps your sewing machine's sewing surface is still not flush you may need to shorten the chain by moving the screw.



If required you can spray a silicon spray or WD-40 into the hole to help your table move smoothly up and down. This is only required if over time the table begins to make noises as it moves up and down.



Metric Allen Wrench Set will be needed to assemble the table