

# **Installing/Troubleshooting your Android Tablet**

## **Contents**

---

<b>Page 1</b>	Install onto quilt machine
<b>Page 5</b>	Power on tablet
<b>Page 6</b>	Unlock screen, open/close apps
<b>Page 8</b>	Troubleshooting

# Install Display

- 1** Line up display holder with handle bar brackets and install with provided screws.



- 2** Unlock clamp from back of display holder and raise clamp.



**3**

Position tablet in clamps, camera side up.

Lower clamps and tighten in place.



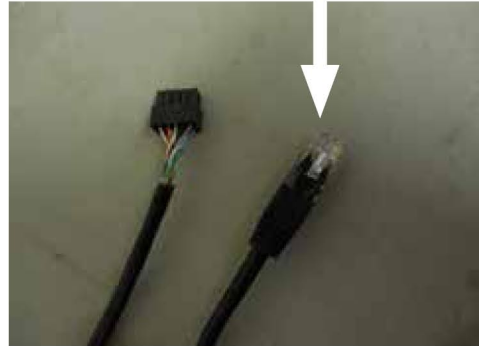
**4**

Lock clamps back in place and plug in wires to the DC IN and OTG ports.



**5**

Plug the ethernet end of the black cable into the display junction.



**For Robotics Only:**

Plug the ethernet end of the black cable into the Remote port on the Black Motor Box.



**For Tin Lizzie Machines:**

Plug the remaining end of the wire into the side port near the front of the Tin Lizzie machine.



**For Upgraded Machines:**

*Adding robotics to a machine that was just upgraded:*

Complete step 5 above.

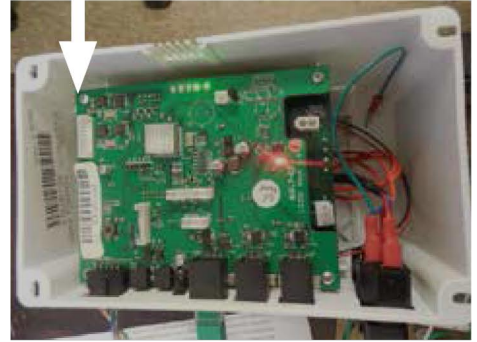
(The cable should be located near the head of the machine where the display mounts.)



*Adding robotics to a machine that has already been upgraded:*

Remove the rear PCB box, and connect the remaining end into the indicated remote port.

(Route the cable internally if possible.)



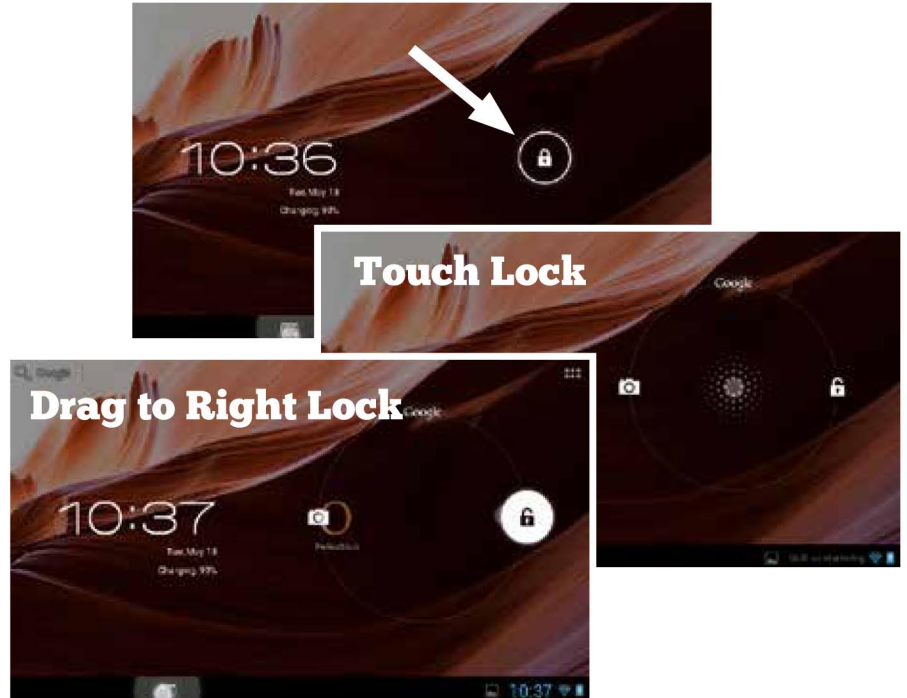
## Power on Tablet

- 1 Press the power button on the top right corner to power on the tablet.



## Unlock The Screen

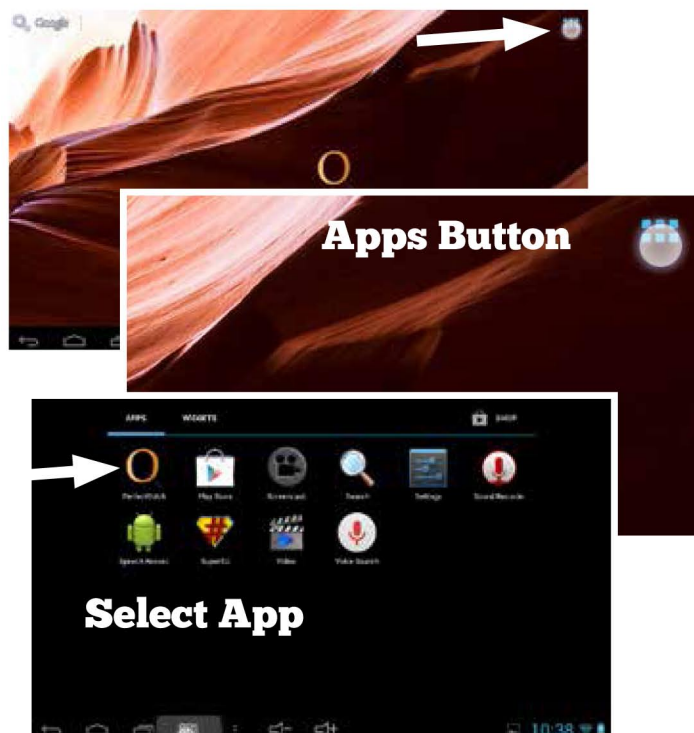
- 1 Press and hold on the lock icon, then drag your finger to the right lock icon and release.



## Open an App

- 1 Press the apps button in the top right corner and select the app you would like to boot.

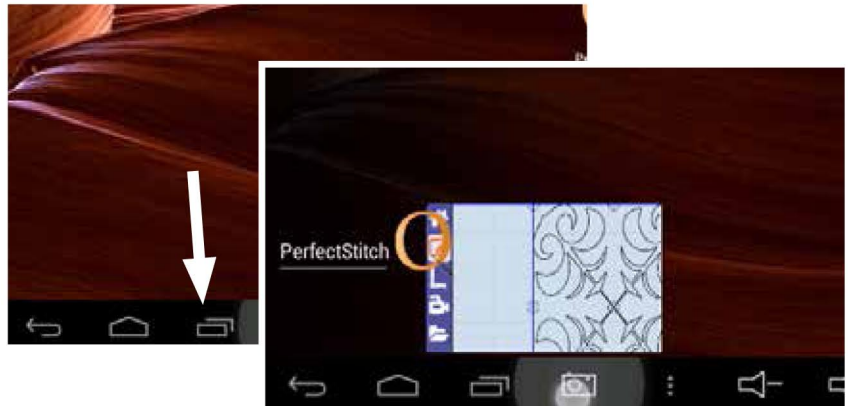
(Swipe your finger left and right on the screen to navigate to the desired app.)



## Close an App

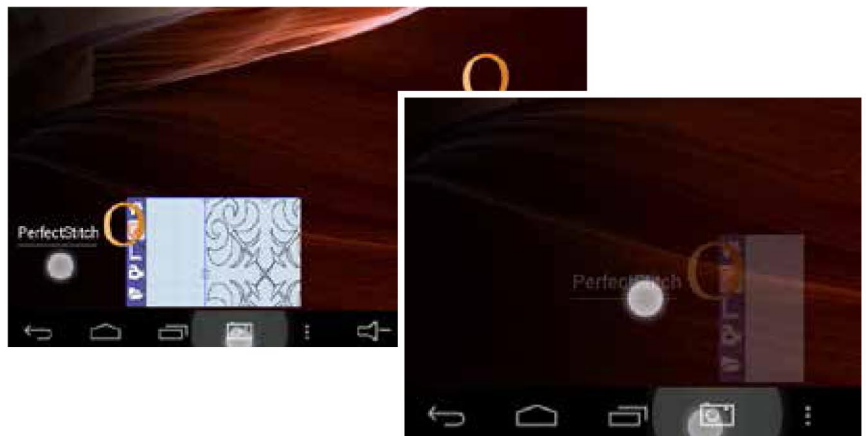
**1** While on the home screen, press the recent apps icon.

A list of currently running apps will appear.



**2** Press and hold onto an app, then drag it to the right until it is no longer visible.

The app has now been closed.



# Troubleshooting

Symptom	Possible Problem	Solution
<b>I'm losing communication with the USB</b>	When the tablet is powered on/off several times in a row, it can cause communication issues.	Press and hold the power button on the side of the tablet. Shut down the tablet.  Once completely shut down, restart the tablet.