

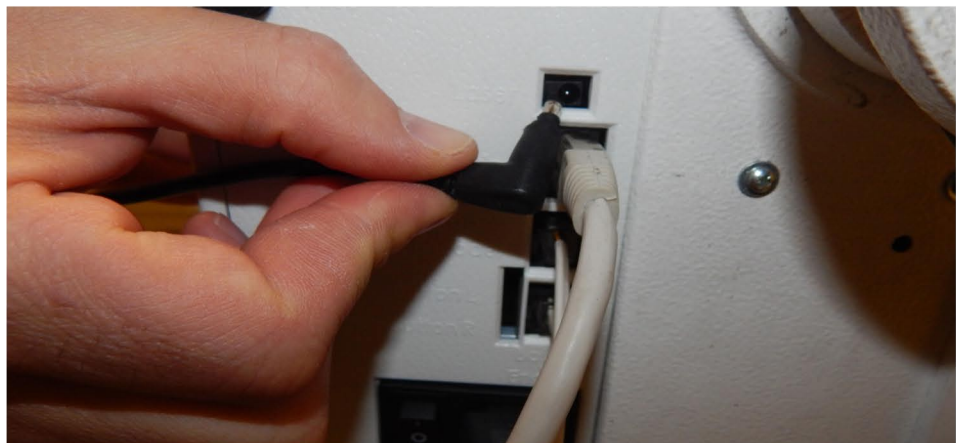
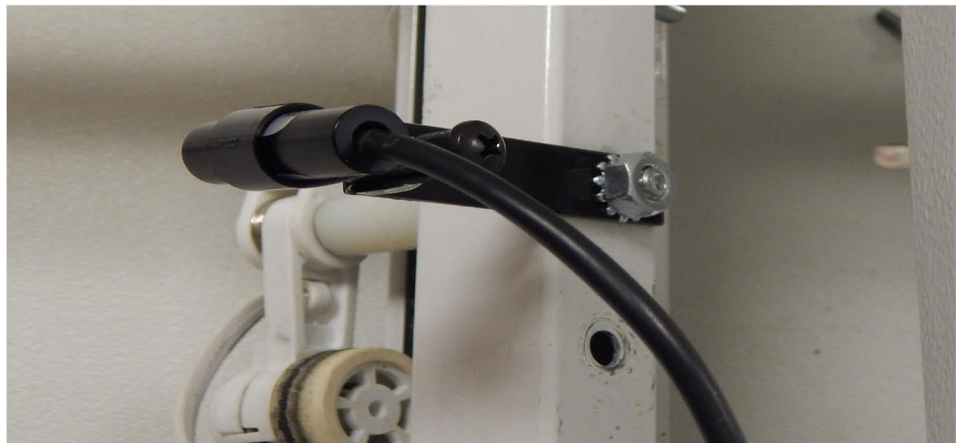
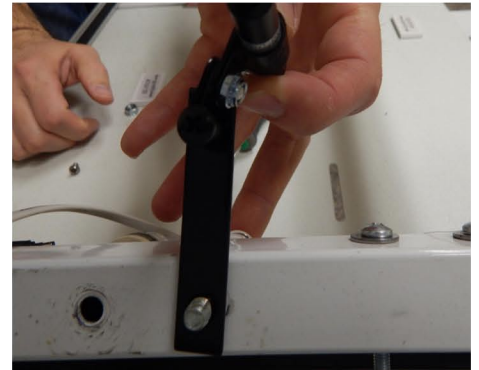
How to attach the Laser holder

1. You will be attaching the laser holder to the encoder on the **Y Axis** (Front to Back).

2. Carefully remove the **K-lock nut** that is holding your encoder in place. Be sure that your encoder spring is still in the correct position after removing the K-lock nut. This should not be tampered with in any sort of way.

3. Place the laser with the bracket on top of the screw that is holding your encoder in place. Once in position place the removed K-lock nut back in it's corresponding location and tighten down.

4. Plug the laser into the Laser port of the PCB Box.



Pictures may differ from your machine.