

2000FR

CORDLESS CLOTH CUTTER

INSTRUCTION MANUAL

CONGRATULATIONS

We would like to thank you, and congratulate you for purchasing the 2000FR cordless cutting knife from Reliable.

The Reliable 2000FR can cut from a single ply of fabric right up to 1" thick, making it a very versatile, lightweight machine. Ideal for sample making or other light-duty operations.

For your safety and to fully enjoy the advantages of this product, please take a few minutes to read all of the important safeguards and care instructions. Keep this manual handy for your reference.

INSTRUCTIONS

IMPORTANT: Check blade screw before use. If blade is loose, see section G to reset the blade

A. Lithium Battery Installation

1. Before installing the lithium battery, please keep the power switch in the "O" position and install the lithium battery into the battery slot of the cutting machine. Please pay attention to the insertion direction of the battery.

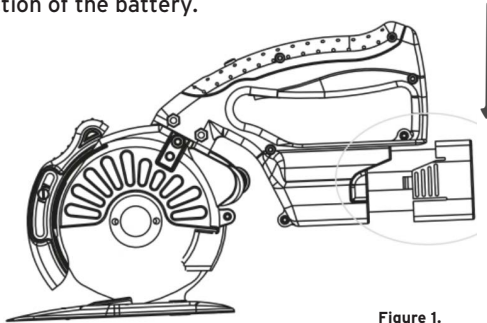


Figure 1.

B. Turning on the Cutting Machine

1. The power switch is located below the handle.
2. On in the "I" position and off in the "O" position.
3. Double click the "speed" button to start the blade.

C. Setting the Speed

1. Adjust the speed using the multifunction key above the finger-operated handle.
2. Speed can be set to five levels. 800/950/1100/1250/1400RPM.

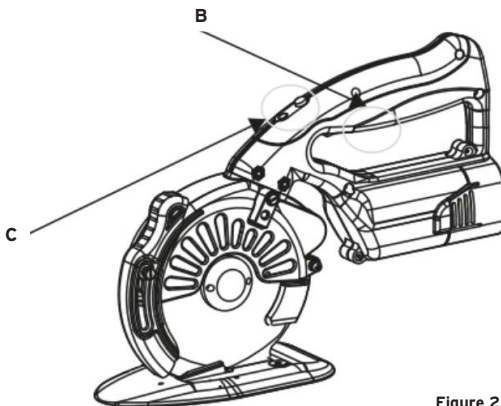


Figure 2.

D. LED Light Function

1. Press the speed button (as labeled "C" above) for 3 seconds to turn on the LED. Hold for another 3 seconds to turn off.

**** Before cutting, connect the battery to the machine and sharpen the knife-edge by pushing the spring loaded projection-grinding switch several times. ****

E. Cutting

1. Ensure the power is in the off "O" position.
2. Pull the knife protector to the appropriate position, start the cutting knife and adjust it to the desired speed.

F. Charging the battery

1. Insert the charger into the appropriate power socket.
2. A green light will show that the charger is powered and ready.
3. Insert the battery into the designated socket.
4. 120 minutes of charging time is required for a full charge.
5. Unplug when complete.

G. Replacing the Blade **** remove the battery first ****

1. Remove the 3 screws on the cutting shield and remove the shield (Figure 3).
2. Align the positioning holes on the blade with the positioning holes on the back cushion (Figure 4).
3. Insert the inner hexagonal wrench into the blade and the hole of the rack plate, lock the blade, then insert the butterfly wrench into the locking nut, loosen the nut counterclockwise and remove the old blade (Figure 5 & 6).
4. Install the new blade. Please note that the blade positioning groove matches the blade positioning tip.

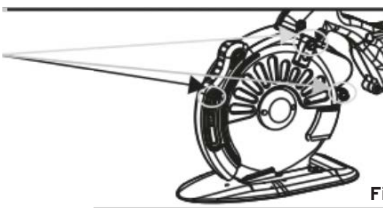


Figure 3.

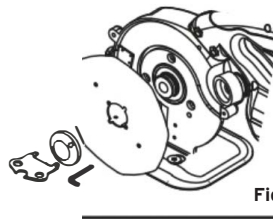


Figure 5.

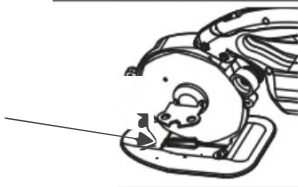


Figure 4.

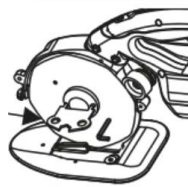


Figure 6.

H. Replacing the Grinding Wheel *remove the battery first **

1. Hold the grinding wheel's outer circle with your hand, insert the bolt into the positioning hole on the shaft, lock the wheel, then rotate in the direction indicated by the arrow.
2. Remove the old grinding wheel and replace it with with the new one.

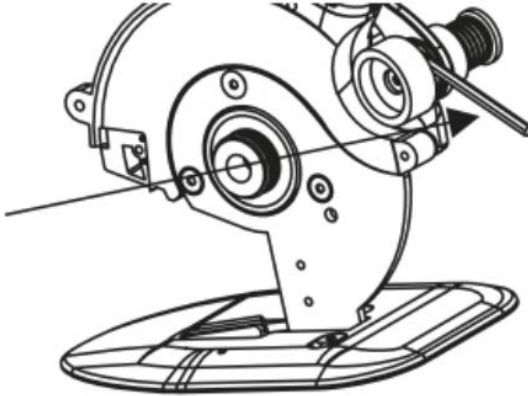
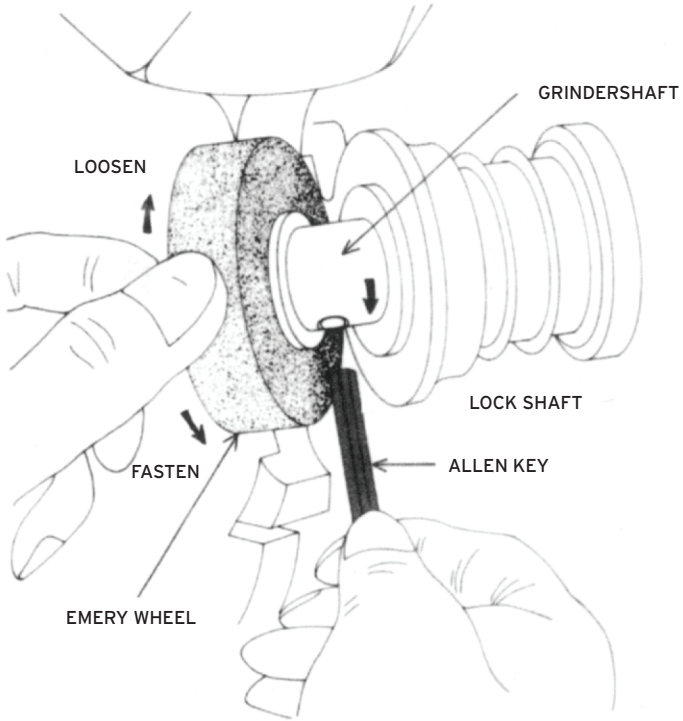


Figure 7.

CAUTION: For safety purposes remove the battery and retain the knife guards at the lowest possible location while the machine is not in use. Also keep the guard as close as possible to the fabric while cutting.

GRINDING WHEEL REPLACEMENT GUIDE

Hold the grinding wheel by hand. Insert the attached lock shaft to the hole provided in the grinder shaft and turn to arrow indiation. Remove used wheel and replace with a new one.



MAINTENANCE

A. Oil Injection

1. In order to ensure the best performance and life of the cutting machine, please always keep the lubricating oil pot in an oily state.
2. Inject oil every 30-40 hours of use.

B. Grinding Wheel

1. When more oil pollution deposits on the contact surface of the grinding wheel, it affects the grinding function.
2. Remove the grinding wheel and use grinding paper to clean (refer to grinding wheel removal)

C. Installation Screw Inspection

1. In order to ensure the best performance and operating safety of the cutting machine, it is necessary to check whether the installation screw is tightened properly.
2. If the screw is loose, it should be tightened again immediately.

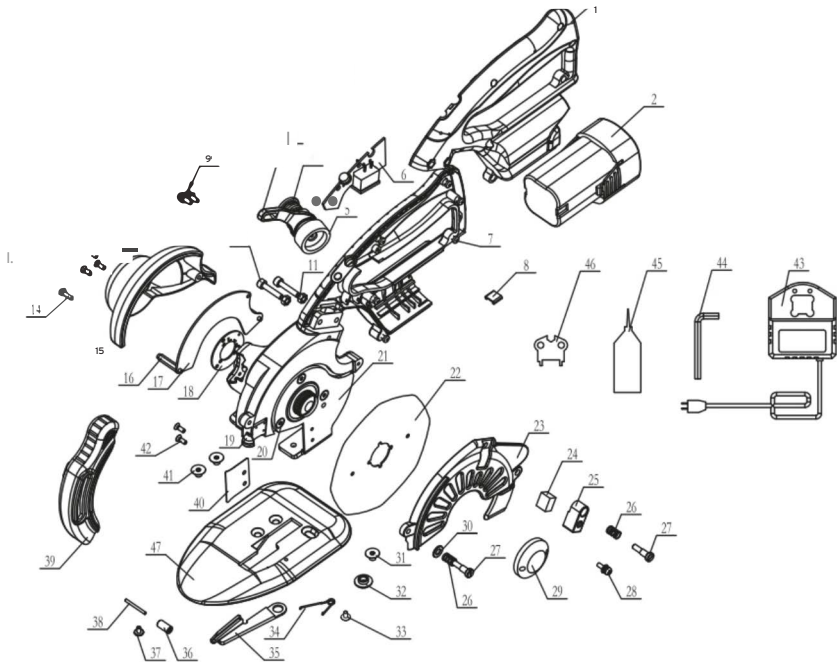
SAFETY

1. Workplaces should be kept clean and tidy.
2. The blade is sharp. Please ensure the blade is kept in the off "O" position and that the battery is removed when not in use. Keep away from children.
3. When the machine is not in use, the cutter protector should be kept in the lowest position
4. Before using the cutting machine, inspect it before every use. Double check the installation screw and blade are safely secured.
5. If the cutting resistance is strong and the cutting is not smooth, the cutting force should not be pushed hard. Double check the sharpness of the blade and the type of material being cut.
6. Before maintenance, please ensure the battery is removed and the power supply is cut off.
7. Connect the ground wire to ensure safety.

SPECIFICATIONS

KNIFE SIZE	110MM
KNIFE SHAPE:	OCTAGON
CUTTING CAPACITY:	25MM (1")
NET WEIGHT:	2KGS
VOLTAGE:	120V
POWER:	150W
SPEED:	800/950/1100/1250/1400 RPM

ASSEMBLY & ACCESSORIES



1	DRIVE HANDLE
2	LI-ION BATTERY
3	SHARPENER FRAME
4	PRESSURE SPRING
5	GRIND WHEEL
6	BUTTON PANEL
7	SELF-TAPPING SCREW
8	SOCKET CONNECTOR
9	COMBINATION SCREW
10	INNER HEXAGON SCREW
11	M4NUT
12	28LABEL
13	M3*8*4 SCREW
14	M3*10 SCREW
15	COVER
16	M3*26HEXAGON SCREW INSULATED COL.
17	MAIN CONTROL PANEL
18	HALL PANEL
19	LED LIGHT
20	M4*8 SCREW
21	STANDARD

9

22	KNIFE
23	SHIELD
24	OIL FELT
25	KINFER OILER
26	PRESSURE SPRING
27	SCREW FOR OILER
28	COMBINATION SCREW
29	BLADE PRESSURE PLATE
30	4.5*9*0.8 TERMINAL PLATE
31	INNER HEXAGON SCREW
32	TWO STEPS NUT
33	M3*6 STEP SCREW
34	UNDER KNIFE SPRING
35	UNDER KNIFE
36	ROLLER
37	M3*5 SCREW
38	ROLLER SHAFT (REAR)
39	KNIFE GUARD
40	SEPARATOR
41	INNER HEXAGON SCREW
42	M3*4 SUNK SCREW

43	CHARGER
44	INTERNAL HEXAGON WRENCH
45	OILER
46	BUTTERFLY WRENCH
47	CHASSIS

RELIABLE PRODUCTS WARRANTY



Reliable Corporation (“Reliable”) warrants to original purchaser of its products that every product sold by Reliable (a “Reliable Product”) is free from defects in material and workmanship for a period of one year from the date of purchase if properly used and maintained. Subject to the conditions and limitations set forth below, Reliable will either repair or replace any part of a Reliable Product that proves defective by reason of improper workmanship or materials. If the defective Reliable Product is no longer available and cannot be repaired effectively or replaced with an identical model, Reliable shall replace the defective Reliable Product with a current Reliable Product of equal or greater value. Repaired parts or replacement products will be provided by Reliable on an exchange basis, and will be either new or refurbished to be functionally equivalent to new. If Reliable is unable to repair or replace a Reliable Product, it will refund the current value of that Reliable Product at the time the warranty claim is made.

This limited warranty does not cover any damage to a Reliable Product that results from improper installation, accident, abuse, misuse, natural disaster, insufficient or excessive electrical supply, abnormal mechanical or environmental conditions, wear and tear resulting from normal use of the product, or any unauthorized disassembly, repair, or modification. This limited warranty does not extend to any indirect, consequential or incidental damages that may be suffered by a user or from the use of a Reliable Product, including without limitation, any liability for third party claims for damage, and is limited to the amount paid by the original purchaser Reliable Product with respect to which this limited warranty protection applies. This limited warranty does not apply with respect to products that have been altered or which are missing serial numbers or for products not purchased directly from Reliable or a dealer authorized by us to sell Reliable Products.

This limited warranty is the only warranty that applies to any Reliable Product, supersedes any and all terms that may be contained in any other document or purchase order and may not be altered or amended except expressly in writing by Reliable.

To obtain a repair or replacement under the terms of this warranty, please contact our customer service group at 1-800-268-1649 or at support@reliablecorporation.com. You will be required to submit an original receipt via fax or e-mail. The receipt must reflect that you are the original purchaser, the product was bought directly from us or from an authorized Reliable dealer and that the warranty claim is being made within the warranty period. You will be issued a return authorization number (RA#) and asked to ship the defective product together with proof of purchase and RA#, prepaid insured to the following address:

Reliable Corporation, 5-100 Wingold Avenue, Toronto, ON M6B 4K7. Freight collect shipments will be refused. The risk of loss or damage in transit will be borne by the customer. Once Reliable receives the defective product, it will initiate the repair or replacement process.

If you have any questions regarding this warranty, you may write to:

Reliable Corporation
100 Wingold Avenue, Unit 5
Toronto, Ontario
Canada M6B 4K7
www.reliablecorporation.com



1 800 268 1649
www.reliablecorporation.com