



THE BOARD 120IB / 220IB

HOME IRONING BOARD

INSTRUCTION MANUAL

THE BOARD 100IB/200IB HOME IRONING BOARD INSTRUCTION MANUAL

RELIABLE. RIGHT THERE WITH YOU.

At Reliable, we do what we love, and take pride in doing it right. You want what's best for the people, places and things that matter in your life - from where you live to what you wear. So do we. From the start, we approach every product with a craftsman's attention to detail and passion for making it right. Quality, functionality, design and customer service play an equally important part in delivering what's right for you. Made in Italy, our ironing tables are engineered and built to exceed your expectations.

For your safety and to fully enjoy the advantages of this product, please take a few minutes to read all the important safeguards and care instructions. Keep this manual handy and review the product warranty for your reference.

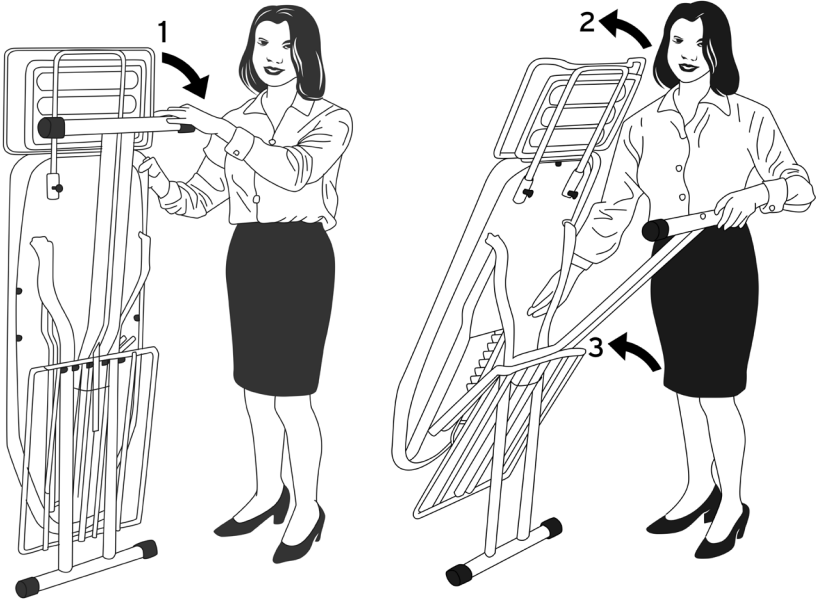
THANK YOU FOR YOUR PURCHASE. PLEASE SHARE YOUR RELIABLE PRODUCT EXPERIENCE BY POSTING AN ONLINE REVIEW ON THE WEBSITE FROM WHICH YOU PURCHASED. WE GREATLY APPRECIATE IT!

INSTRUCTIONS FOR USE

The Reliable Board 100IB and 200IB ironing boards are equipped with a quick-grip locking system to keep the board secure when folded.

OPENING THE BOARD

To open the board, place it with the iron rest facing upwards. Block the front leg of the ironing board in place on the floor with your foot. Position your right hand on the board at the height of the lever and your left hand on the bottom of the iron rest. Push the lever downwards and at the same time, lift the board to the required height with your other hand (see figure 1). To lower the board, hold the board in both hands and use the lever.



**FOR YOUR SAFETY
DO NOT OPEN THE IRONING
BOARD AS PICTURED HERE:**



BEFORE IRONING

The ironing board must be placed on a solid and level surface, and the cover must be secure. Place the iron station or steam iron on the iron rest. Now the ironing board is ready for use. After ironing, wait until the ironing surface has cooled down before folding.

CLOSING THE BOARD

DO NOT CLOSE THE IRONING BOARD BEFORE REMOVING THE IRON OR IRONING SYSTEM FROM THE IRON REST.

When cold, put the ironing board in its upright position with the iron rest upwards. Press the lever and in the same time pull the board inwards. Release the lever to activate the quick-grip locking system. The ironing board can now be moved easily and put in a safe place away from children.

IMPORTANT SAFETY INSTRUCTIONS

1. The board height regulation pin must never be released when the iron is on the iron rest to avoid the iron falling and/or sudden closure of the board.
2. The ironing board is not intended for use by persons (including children) with reduced physical, sensory or mental capabilities, or lack of experience and knowledge, unless they have been given supervision or instruction concerning use of the appliance by a person responsible for their safety. Children should be supervised to ensure that they do not play with the ironing board.
3. Never insert objects into the apertures in the board.
4. All repairs must be carried out by an authorised service centre only. Repairs performed by unqualified persons are dangerous and invalidate the guarantee. All components of the appliance must be replaced with original spare parts only.
5. The manufacturer is not liable for damage to persons, things or animals deriving from inappropriate or incorrect use of the ironing board.
6. Never expose the ironing board to the elements (rain, sun, etc.).

RELIABLE CORPORATION 10-YEAR PRODUCT WARRANTY POLICY FOR IRONING BOARDS (MODELS 100IB, 200IB, 300LB)

Reliable Corporation (“Reliable”) warrants to the original purchaser of the ironing board models noted above from Reliable (the “Reliable Ironing Board”) that it will be free from defects in materials and workmanship when utilized for normal household use by the original purchaser only. This warranty is void if the purchaser fails to remove the pad/cover set after use of the Reliable Ironing Board. The Warranty does not apply to any pad/cover set purchased with the Reliable Ironing Board.

Subject to the conditions and limitations set forth herein, Reliable will either repair or replace any part of a Reliable Ironing Board that proves defective by reason of improper workmanship or materials. If the defective Reliable Ironing Board is no longer available and cannot be repaired effectively or replaced with an identical model, Reliable shall replace the defective Reliable Ironing Board with a current Reliable Ironing Board of equal or greater value. Replacement products will be provided by Reliable on an exchange basis, and will be either new or refurbished to be functionally equivalent to new. If Reliable is unable to replace a Reliable Ironing Board, it will refund the current value of that Reliable Ironing Board at the time the warranty claim is made.

This limited warranty does not cover any damage to a Reliable Ironing Board that results from improper installation, accident, abuse, misuse, unreasonable use, natural disaster, abnormal mechanical or environmental conditions or any unauthorized disassembly, repair or modification. This limited warranty does not extend to any indirect, consequential or incidental damages that may be suffered by a user from the use of a Reliable Ironing Board, including without limitation, any liability for third party claims for damage, and is limited to the amount paid by the original purchaser for the Reliable Ironing Board with respect to which this limited warranty protection applies. This limited warranty does not apply with respect to products that have been altered or for products not purchased directly from Reliable or a dealer authorized by Reliable to sell the Reliable Ironing Board.

This limited warranty is the only warranty that applies to the Reliable Ironing Board, supersedes any and all terms that may be contained in any other document or purchase order and may not be altered or amended except expressly in writing by Reliable.

To obtain a repair or replacement under the terms of this warranty, please contact our customer service group at 1 800 268 1649 or at support@reliablecorporation.com. You will be required to submit an original receipt via fax or e-mail. The receipt must reflect that you are the original purchaser, the product was bought directly from Reliable or from an authorized Reliable dealer and that the warranty claim is being made in compliance with the terms set out in this document or any subsequent document issued by Reliable in connection with this policy. You will be issued a return authorization number (RA#) and asked to ship the defective product together with proof of purchase and RA#, prepaid insured to the following address: Reliable Corporation, 5-100 Wingold Ave, Toronto, ON M6B 4K7. Freight collect shipments will be refused. The risk of loss or damage in transit will be borne by the customer. Once Reliable receives the defective product, it will initiate the repair or replacement process.

If you have any questions regarding this warranty, you may write to:

Reliable Corporation
100 Wingold Avenue, Unit 5
Toronto, Ontario
Canada M6B 4K7
www.reliablecorporation.com

DID YOU KNOW?

**We supply thousands of dry
cleaners and major
department store alteration
shops with ironing stations
and ironing tables.**



RELIABLE

1 800 268 1649

www.reliablecorporation.com