

# 4210SW

SINGLE NEEDLE LOCKSTITCH, WALKING FOOT



The brand new second-generation 4210SW improves on our best selling walking foot, compound feed sewing machine. Whether you're sewing upholstery, bags, heavy-canvas, or a variety of other heavy materials the 4210SW is built tough.

To the already great design, we've added a synchronizer for the SewQuiet 6000SM motor to make corner stitching easier, a height adjustment lever to accommodate different thicknesses of material, and a built-in bobbin winder.

## SPECIFICATIONS

MAXIMUM SEWING SPEED	2,000 RPM	
STITCH LENGTH	0 - 0.35"	0 - 9 mm
NEEDLE BAR STROKE	1.42"	36 mm
PRESSURE FOOT LIFT	By hand 0.35" By knee 0.75"	By hand 9 mm By knee 19 mm
AUTO FOOT LIFT	9/16	
NEEDLE SYSTEM #	135 x 17	
SAFETY CLUTCH	Yes	
FEED DOG	Single row	
HOOK TYPE	Rotary - auto lubricated	
LUBRICATION	Manual	
STITCH DIAL REGULATOR	Yes	
REVERSE LEVER	Yes	
COUNTRY OF ORIGIN	China	
WARRANTY	Limited 1 year	

QUALITY  
YOU CAN  
COUNT ON



FOOT HEIGHT ADJUSTER



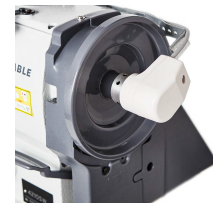
VERTICAL BOBBIN LOAD



SEWQUIET SERVMOTOR



SUPERIOR STAND



SYNCHRONIZER



AUTOMATIC BOBBIN  
WINDER



UBERLIGHT INCLUDED



# 4210SW

SINGLE NEEDLE LOCKSTITCH, WALKING FOOT

