



5600TW

INDUSTRIAL SEWING MACHINE

INSTRUCTIONAL MANUAL

CONTENTS

Operation Instruction

| | |
|--|---|
| 1. Brief introduction..... | 1 |
| 2. Main specifications..... | 1 |
| 3. Machine installation..... | 1 |
| 4. Tension of belt..... | 1 |
| 5. Installing the belt cover..... | 2 |
| 6. Lubrication..... | 2 |
| 7. Lubrication..... | 3 |
| 8. Cleaning the small oil pan..... | 3 |
| 10. Setting the needle..... | 4 |
| 11. Threading the bobbin thread..... | 4 |
| 12. Threading the needle thread..... | 5 |
| 13. Stitch length..... | 5 |
| 14. Thread tension..... | 5 |
| 15. Adjusting thread take-up spring..... | 6 |
| 16. Presser foot lift..... | 6 |
| 17. Pressure of presser foot..... | 6 |
| 18. Adjusting needle guard plate..... | 6 |
| 19. Reset of safety clutch..... | 7 |
| 20. Adjusting hook thread opener..... | 7 |
| 21. Timing between needle and rotating hook..... | 7 |
| 23. Settings for different speeds..... | 8 |
| 24. Troubleshooting..... | 8 |

Parts Manual

| | |
|--|-------|
| 1. Casting mechanism..... | 10-13 |
| 2. Arm shaft & thread take-up mechanism..... | 14-17 |
| 3. Needle bar rocking frame mechanism..... | 18-19 |
| 4. Upper feed mechanism..... | 20-23 |
| 5. Lower feed and reverse regulating..... | 24-27 |
| 6. Lower shaft and rotating hook..... | 28-29 |
| 7. Thread tension components..... | 30-31 |
| 8. Bobbin winder & knee lifter components..... | 32-33 |
| 9. Lubrication components..... | 34-37 |
| 10. Thread trimming mechanism..... | 38-41 |
| 11. Auto-reverse feed mechanism..... | 42-43 |
| 12. Tension release mechanism..... | 44 |
| 13. Auto-lifter mechanism..... | 45 |
| 14. Accessories..... | 46-49 |

Operation Instruction

1. Brief introduction

This compound feed sewing machine is designed with unique feed mechanisms, which make sewing of uneven and thick materials easily. Smooth, uniform and neat stitches are promised. The machine runs with high speed and low noise thanks for its' vertical-axis rotating hook, sliding lever take-up and synchronized belt driven mechanisms. It is designed for sewing of car seats, sofas, leather bags and tents industry.

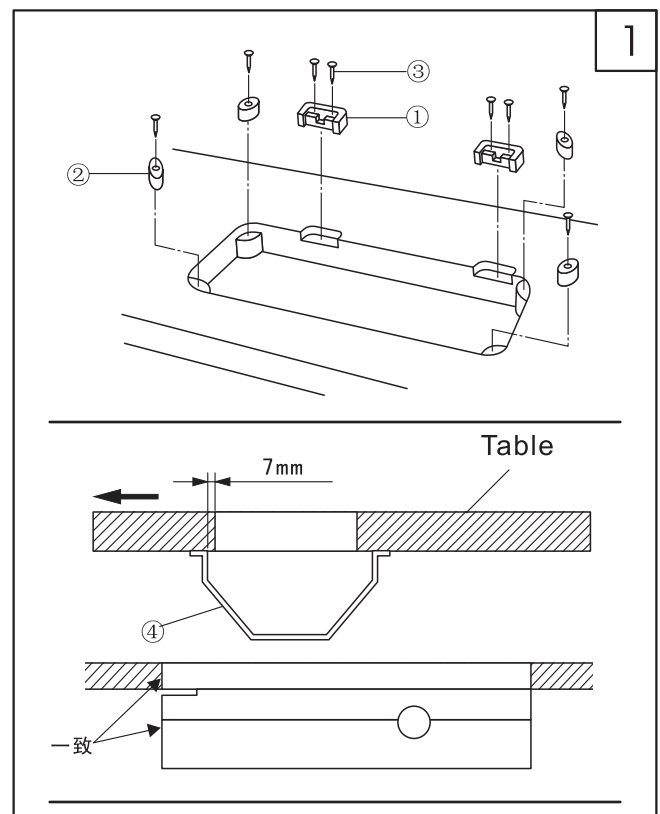
3. Machine installation (Fig.1)

1. Setting of hinges and cushions of machine head
Fix hinges ① and rubber cushions ② into the working table by nails ③.
2. Setting of oil pan
Fix oil pan ④ under the working table by 8 wooden screws as per illustration.

2. Main specifications

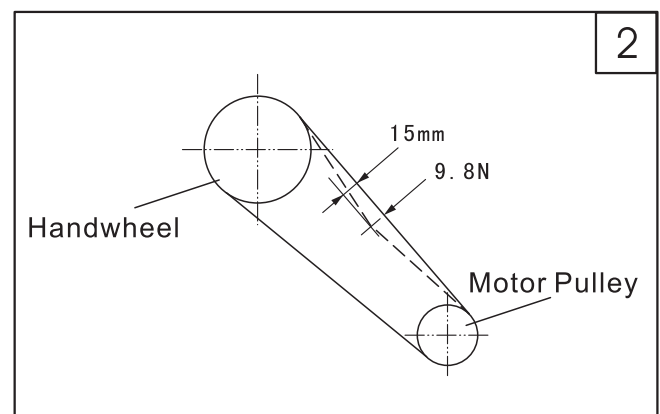
| | |
|--------------------------|--|
| Applications | Medium & heavy weight materials |
| Max sewing speed | 1500 s.p.m |
| Max stitch length | 9mm |
| Needle bar stroke | 36mm |
| Needle | DP×17(Nm125~Nm180) 23# |
| Lubrication | Oil wick (Rotating hook self oiled) |
| Rotating hook | Self-oiled big rotating hook |
| Presser foot lift height | 9mm by hand, 16mm by knee/lifter |
| Motor power | 375W clutch motor 550W servo motor(for D1T3/D2T3) |

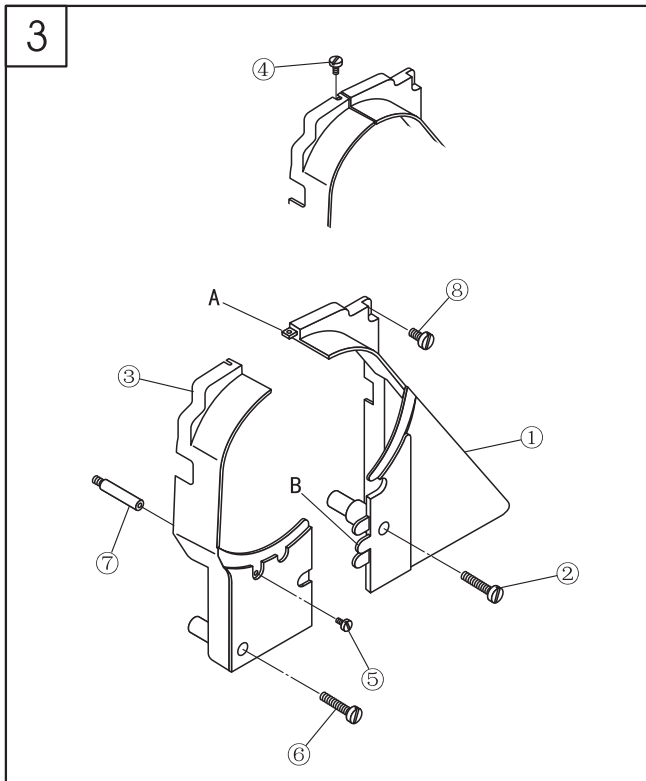
Special gauge size:3.2, 4, 4.8, 8, 9.5,12.7, 16,19, 25.4mm



4. Tension of belt (Fig.2)

Adjust the height of motor to regulate the tension of belt. Press the center of belt with a force of 9.8N, there should be a slack of 15mm.
Note: Turn off the power and make sure the motor stopped before adjustment.

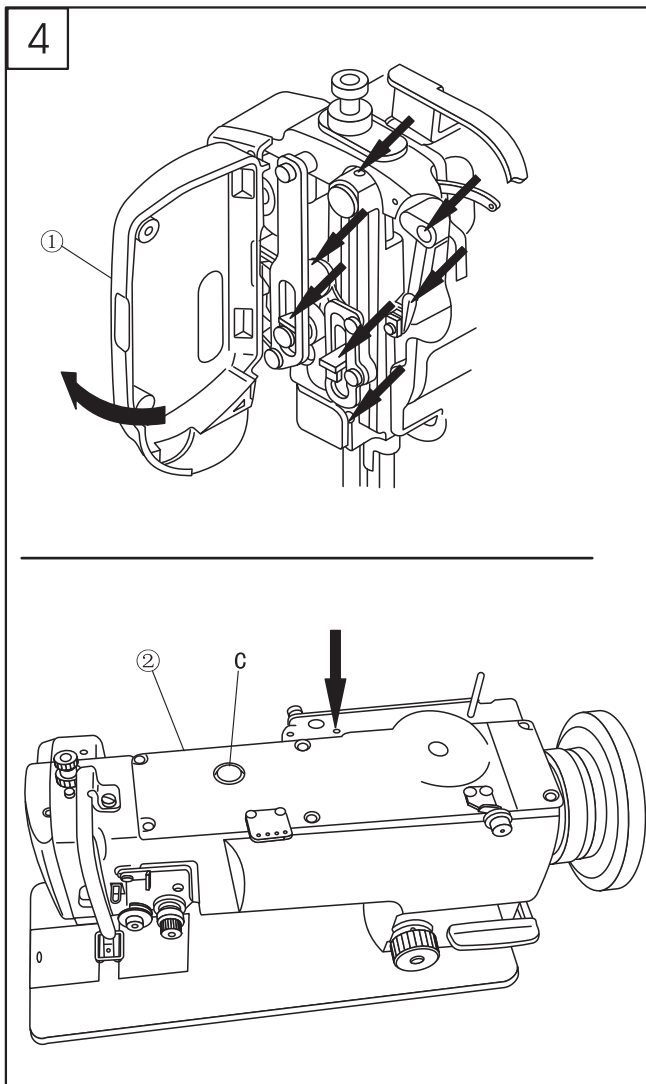




5. Installing the belt cover (Fig.3)

- 1.Screw the belt cover supporting pole ⑦ into the screw hole.
- 2.Install belt cover (R) ① to the machine head by setscrew ② and ⑧.
- 3.Set belt cover (L) ③ to the pawl A and B of cover ①.
- 4.Fix belt cover (L) ③ by set screw ④, ⑤ and ⑥.

Note: After installation, make sure the belt cover is not touched with the belt and handwheel.



6. Lubrication (Fig.4)

1.Lubrication in the face plate

- 1). Remove face plate screw.
- 2). Open face plate ① as per illustration.
- 3). Drip oils to positions signed by arrows.
- 4). Close the face plate.
- 5). Tighten the screw.

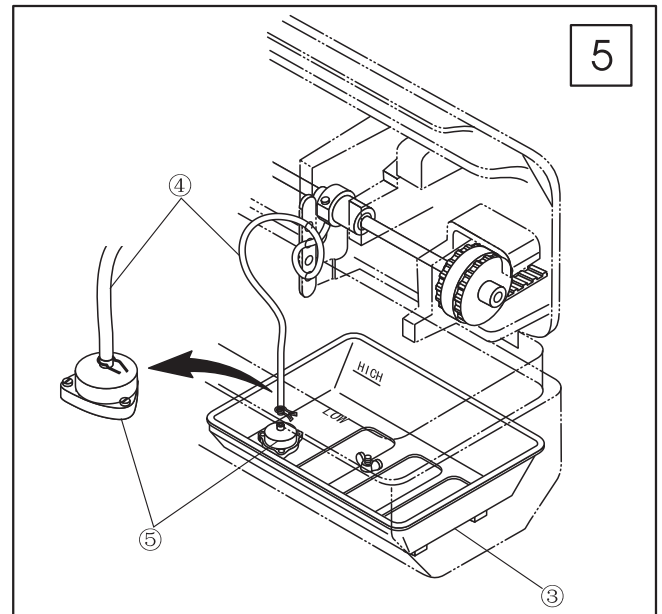
2.Lubrication in the arm

- 1). Drip oils to the signed position by arrows everyday.
- 2). Oil the machine before its Initial running or after a long time idle at signed point and, remove top cover ②, drip oils to all felts and wicks inside the arm.

7. Lubrication (Fig.5)

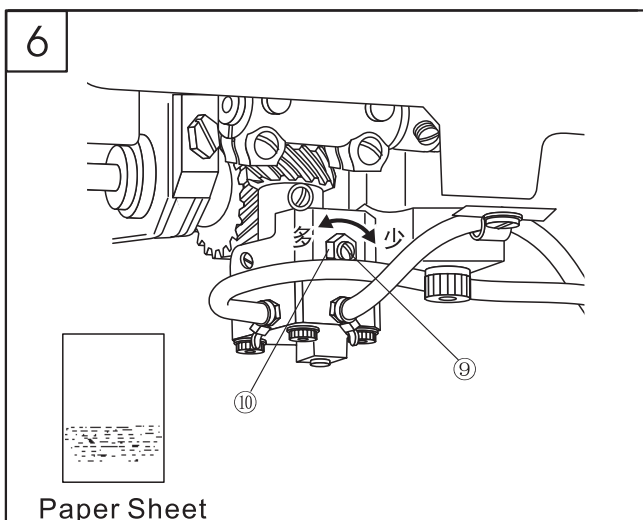
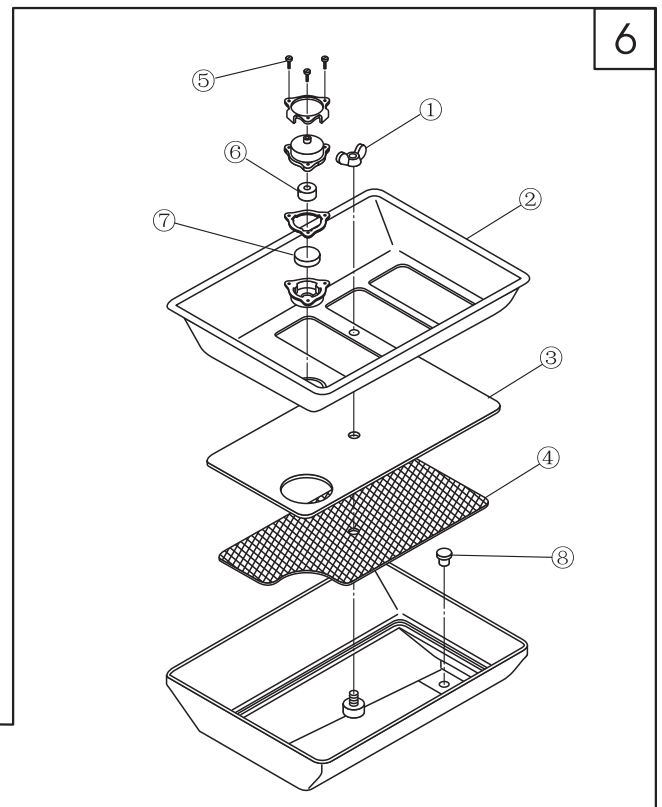
1. Small oil pan

- 1). Insert small oil pan ③ into the oil pan, with the projecting position into the waste oil hole.
- 2). Insert oil tube ④ into filter ⑤ in the small oil pan and fasten by clip.
- 3). Fill oil into small oil pan to the mark of HIGH.
- 4). Replenish oil in time when oil level is below LOW mark.
- 5). Run the sewing machine after oil filled, oil movement should be viewed from the oil window C. (Speed over 1500rpm)



8. Cleaning the small oil pan (Fig.6)

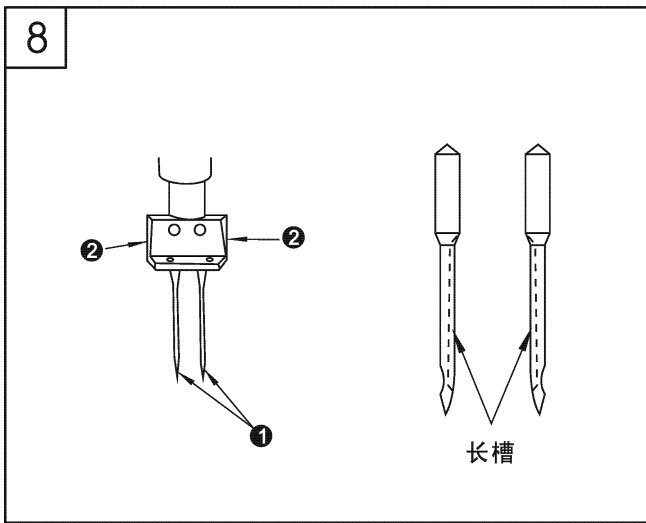
1. Remove oil tube off the small oil pan.
2. Take off wing nut ①, tray ②, filter ③ and supporter ④, clean the small oil pan.
3. Remove screw ⑤, clean filter element ⑥ and magnet ⑦.
4. Take off plug ⑧ from small oil pan to drain waste oil and insert the plug ⑧ after drained. (Note: Oil should be drained first before taking out the small oil pan.)
5. Put filter element ⑥ and magnet ⑦ into the case and fix on the tray ② with screw ⑤.
6. Then put supporter ④, filter ③ and tray ② in reverse sequence, fix them with swing nut ① on the small oil pan.
7. Insert oil tube into the filter and fix with clip.



Paper Sheet

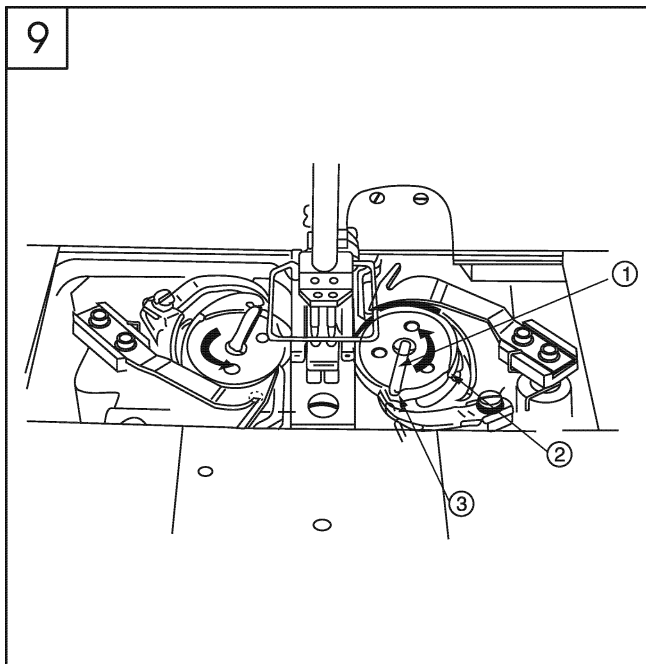
8. Loosen nut ⑩, to regulate oil of rotating hook by turning screw ⑨. Turn clockwise to reduce oil amount, turn counter clockwise to increase oil amount.

9. Hold a paper strip close to the rotating hook for 5 seconds, if oil sprays as in the illustration shows, the proper oil amount is acquired.



10. Setting the needle (Fig.8)

1. Turn the handwheel to raise the needle bar to its highest point.
2. Loosen needle set screw ② and have the long groove ① facing away from where you load the bobbin.
3. Insert needle fully.
4. Tighten the set screw ②.

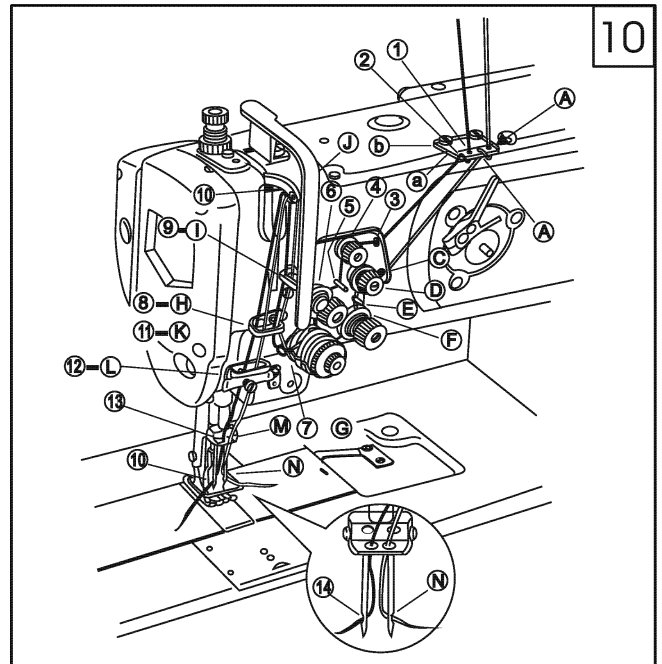


11. Threading the bobbin thread(Fig.9)

1. Lift the latch ① and take out the bobbin.
2. Insert bobbin correctly and close the latch.
3. Draw bobbin thread through slot ②, tension spring and hole ③.
4. Bobbin should turn in the direction shown by the arrow when draw the bobbin thread.

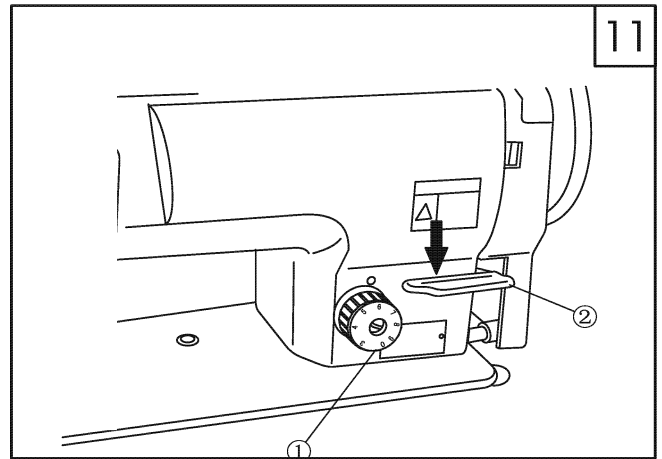
12. Threading the needle thread(Fig.10)

Thread in sequence as shown in the illustration.



13. Stitch length (Fig.11)

Turn the stitch dial ① leftward or rightward to get your required stitch length.
Press the reverse lever ② to make stitch dial move freely.



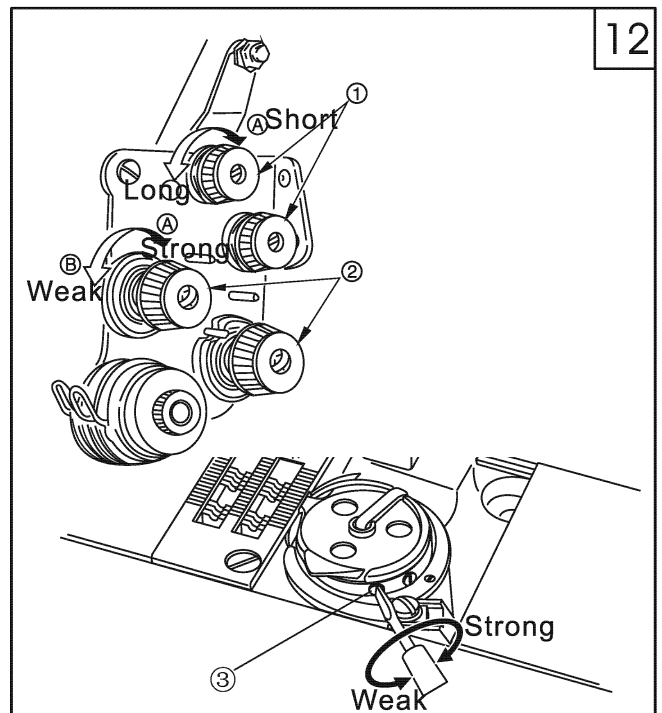
14. Thread tension (Fig.12)

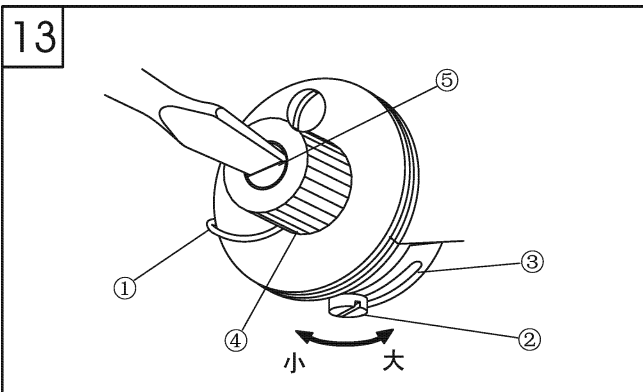
1. Tension of needle thread

Turn the tension nut ① clockwise to increase needle thread tension, turn counterclockwise to reduce the tension.

2. Tension of bobbin thread

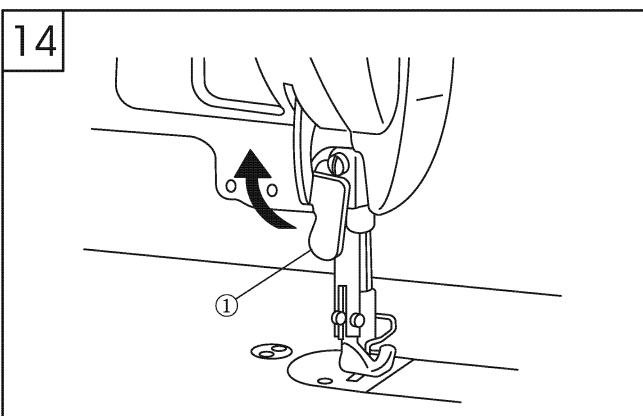
Turn the tension nut ② clockwise to increase bobbin thread tension, turn counterclockwise to reduce the tension.





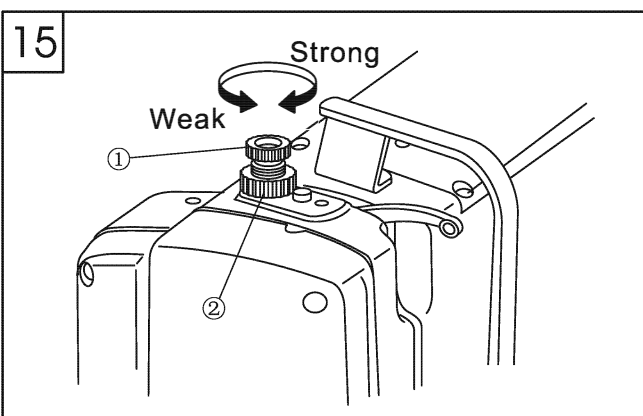
15. Adjusting thread take-up spring (Fig.13)

- 1.To change the take-up spring swing range
 - a.Loosen set screw ② and move plate ③ to adjust the take-up spring ①.
 - b.Move plate ③ rightward to increase take-up spring swing range, move leftward to reduce swing range.
- 2.To change the tension of take-up spring
Loosen nut ④, turn shaft ⑤ counterclockwise to increase tension, turn clockwise to reduce the tension.



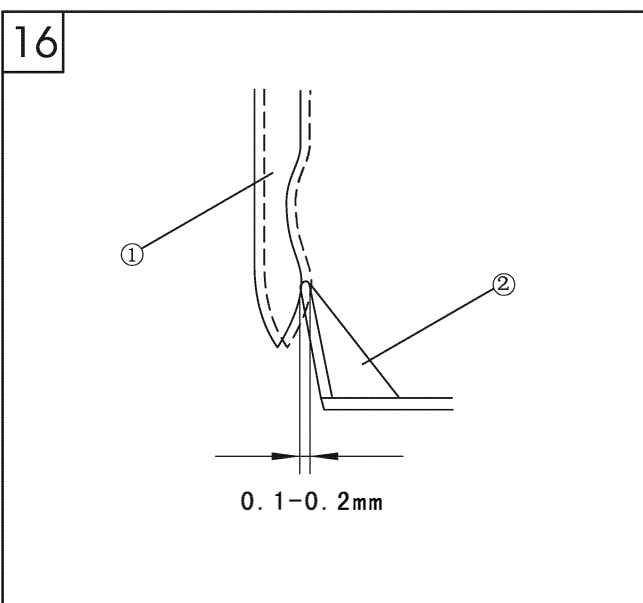
16. Presser foot lift (Fig.14)

- 1.When the needles are at their highest position, raise the foot lift lever ① as illustration. The presser foot rises 9mm then stop.
- 2.Lower the lift lever to restore the presser foot.



17. Pressure of presser foot (Fig.15)

- Turn the regulating bolt ① rightward to increase the pressure, turn counterclockwise to reduce the pressure. Tighten nut ② after adjustment.



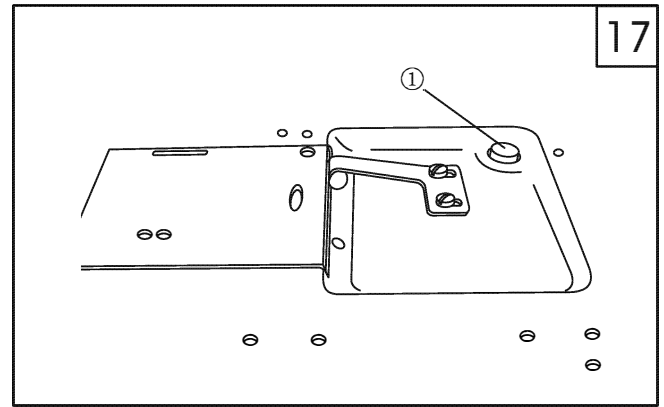
18. Adjusting needle guard plate (Fig.16)

- Check the position of needle guard plate after change the rotating hook. The standard position of the guard plate ② is 0.1 ~ 0.2 mm against needle ①. If the clearance is not right, bend the guard plate to adjust.
- 1.To bend the guard plate inward, insert a screwdriver outside.
 - 2.To bend the guard plate outward, insert a screwdriver inside of the plate.

19. Reset of safety clutch (Fig.17)

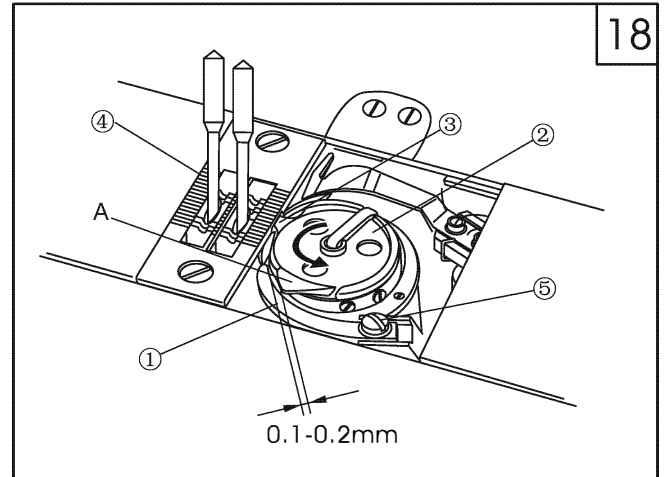
In case the rotating hook is applied with a over strong force during operation, the safety clutch start working. The rotating hook stop turn even the handwheel is still turning. Check the machine and solve the problem, then reset the safety clutch.

- 1.Press button ① down and hold. If the rotating hooks are jammed, the safety clutch will kick in and release the bottom shaft from rotating.
- 2.While turning the hand wheel towards you, button will click into position and go down deeper. Still holding button, turn hand wheel away from you until you feel the clutch go into position.



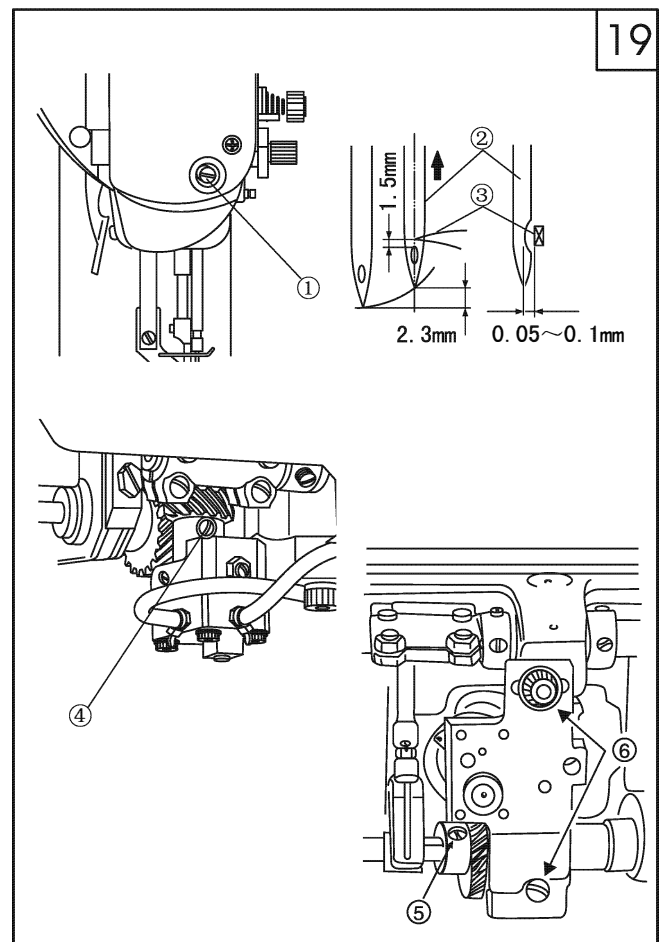
20. Adjusting hook thread opener (Fig.18)

- 1.Turn the handwheel towards you to move the thread opener ① to its ultimate position.
- 2.Load the bobbin ② with the thread feeding counterclockwise (left). Rotate the handwheel so the thread opener makes the bobbin holder (hook basket) 1~2mm.



21. Timing between needle and rotating hook (Fig.19)

- 1.Turn the stitch dial to 0.
- 2.Turn the handwheel to raise needle bar by 2.3mm from its lowest point. Loosen needle bar joint screw ①, adjust the clearance between top of the needle hole and hoop tip to 1.5mm. Tighten screw ①.
- 3.Turn the handwheel to raise needle bar by 2.3mm from its lowest point. Adjust the hook tip ③ align with the center of the needle ② axis. Tighten the gear (small) two set screws ④, make sure that the first V-screw of two set screws align with the V-notch on the hook shaft.
- 4.When hook tip ③ aligned with the center of the needle ② axis, loosen the set screw ⑥ and move the hook saddle leftward or rightward to make the clearance between hook tip and needle to 0.05~0.1mm. Tighten screw ⑥.
- 5.Loosen the gear (big) two set screws ⑤, move gear (big) leftward or rightward to make the hook tip ③ align with the center of the needle ② axis. Tighten set screws ⑤, make sure that the first screw of two set screws aligns with the flat notch of the lower shaft.



23. Settings for different speeds

| Alternating lift amount | Stitch length < 6mm | 6mm < Stitch length < 9mm |
|-------------------------|---------------------|---------------------------|
| Less than 3mm | 1,500rpm | 1,000rpm |
| 3~4mm | 1,000rpm | 1,000rpm |
| 4~6.5mm | 500rpm | 500rpm |

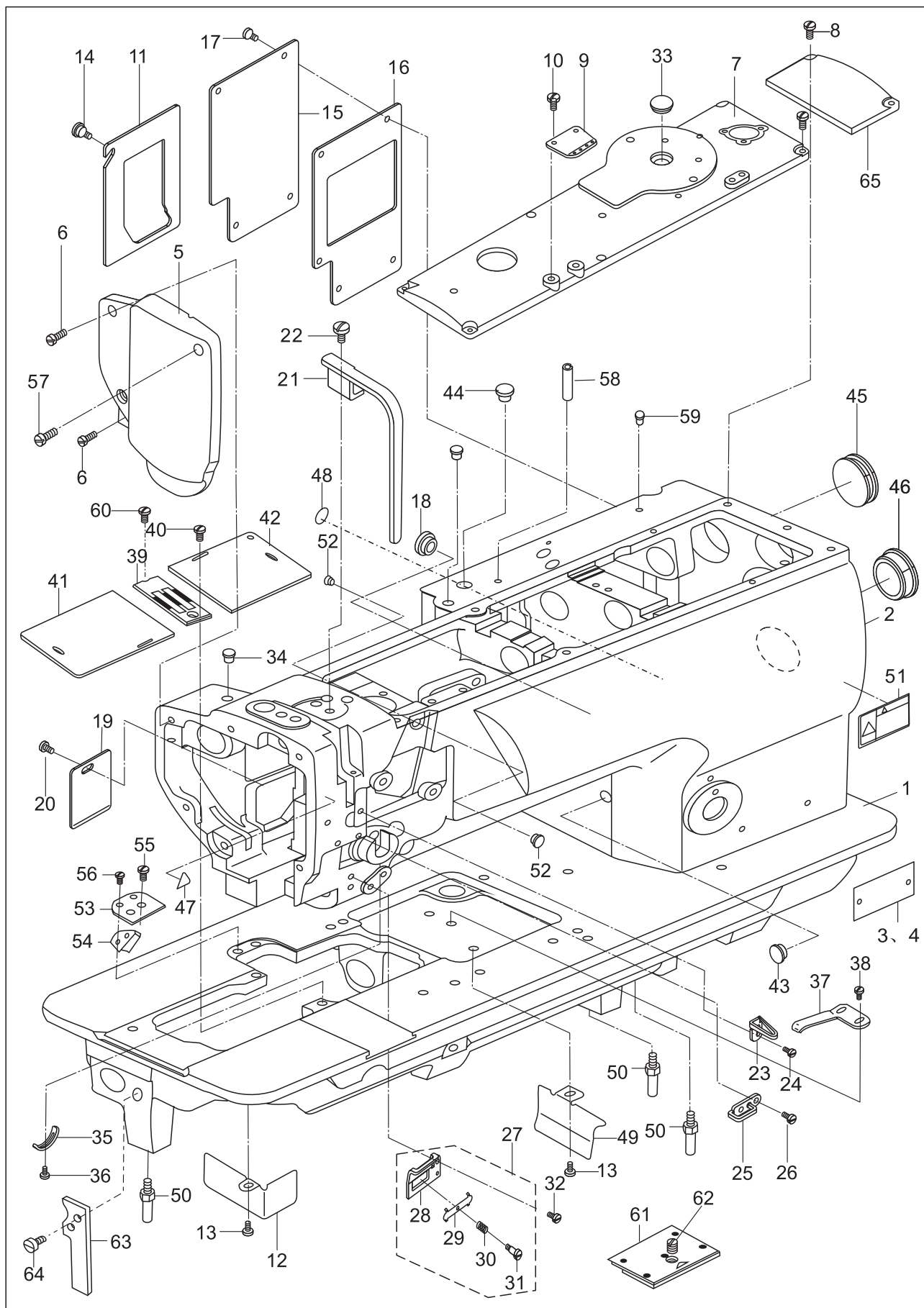
Make proper settings for different speeds accordingly. Do not surpass the standard.

24. Troubleshooting

| Trouble | Possible cause | Solution |
|---|---|---|
| 1. Thread breaking (2~3mm thread left on the cloth) | <ol style="list-style-type: none"> 1. Damage on the rotating hook slots, needle point, hook tip and needle plate 2. Needle thread too tight 3. Collision between needle and rotating hook 4. Rotating hook oiled insufficiently 5. Needle thread too loose 6. Thread take-up spring too rigid 7. Too fast or slow timing of rotating hook and needle | <ol style="list-style-type: none"> 1. Polish the damaged position, thorns with sand paper or rasp 2. Weaken the needle thread tension 3. Refer to 21. Timing between needle and rotating hook 4. Adjust oil amount (7. Lubrication) 5. Increase the needle thread tension 6. Reduce the rigidity of take-up spring 7. Refer to 21. Timing between needle and rotating hook |
| 2. Skipped stitch | <ol style="list-style-type: none"> 1. Too fast or slow timing of rotating hook and needle 2. Presser foot pressure too weak 3. Clearance between the top of needle hole and the rotating hook tip not proper 4. Wrong needle | <ol style="list-style-type: none"> 1. Refer to 21. Timing between needle and rotating hook 2. Tighten the pressure adjusting bolt 3. Refer to 21. Timing between needle and rotating hook 4. Replace the needle with correct one |
| 3. Loose stitch | <ol style="list-style-type: none"> 1. Bobbin thread doesn't pass under the tension spring of the bobbin case 2. Roughness on the rotating hook 3. Bobbin stop rotating 4. Bobbin thread too loose 5. Bobbin thread too tight 6. Damage of the needle point | <ol style="list-style-type: none"> 1. Refer to 11. Threading the bobbin 2. Polish with sand paper or rasp 3. Replace bobbin or rotating hook 4. Increase the bobbin thread tension 5. Reduce the bobbin thread tension 6. Replace the needle |

Parts Manual

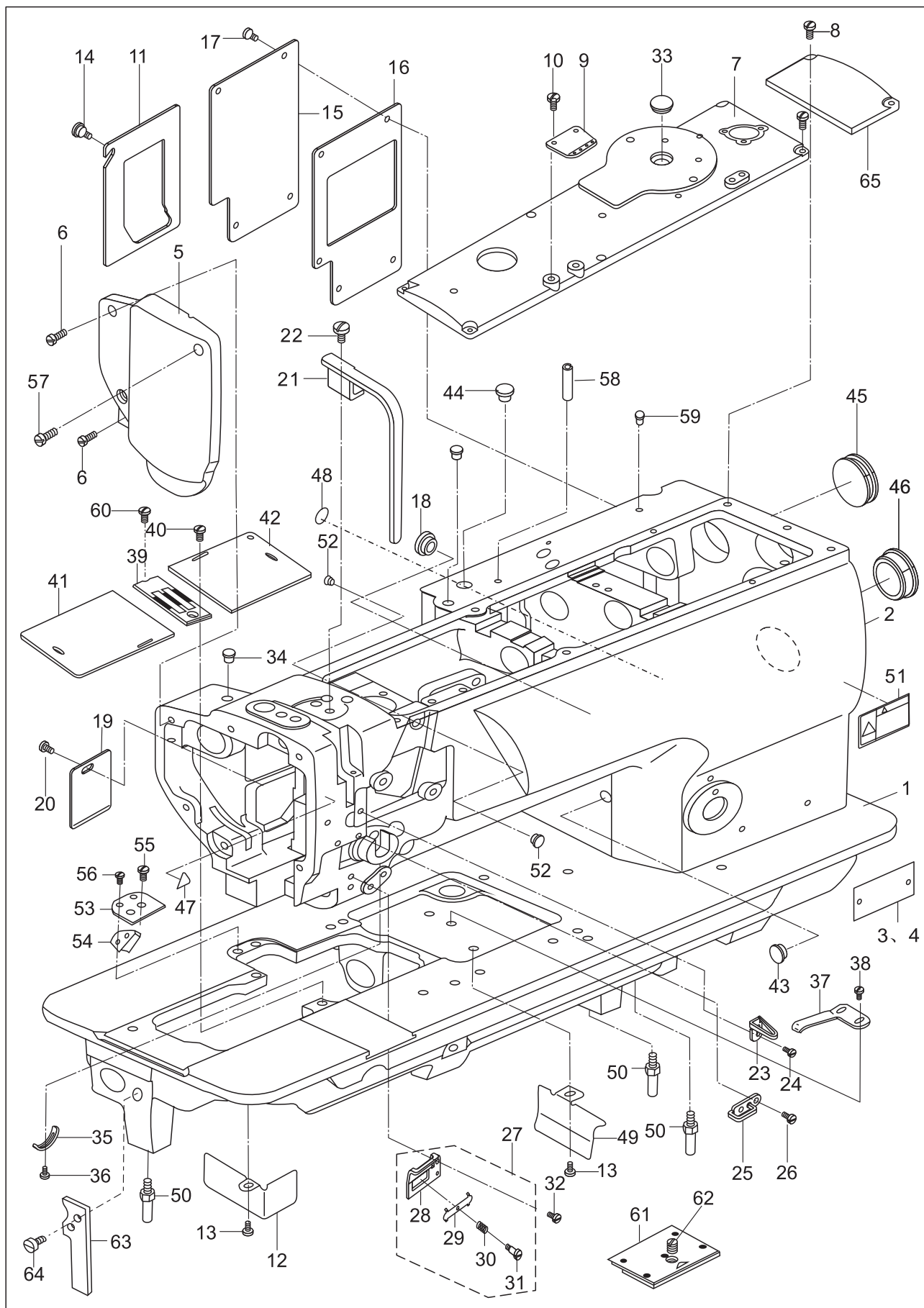
1. Casting mechanism



1. Casting mechanism

| No. | Parts No. | Name of parts | Qty. | Remarks |
|-----|-------------|----------------------------|------|---------------|
| 1 | 220WF2-001 | Bed | 1 | |
| 2 | 220WF2-002 | Arm | 1 | |
| 3 | 220WF2-003A | Model plate | 1 | |
| | 226WF1-001A | Model plate | 1 | |
| | 244WF1-001A | Model plate | 1 | |
| 4 | 220WF2-003B | Model plate | 1 | |
| | 226WF1-001B | Model plate | 1 | |
| | 244WF1-001B | Model plate | 1 | |
| 5 | 92WF2-003 | Face plate assy. | 1 | |
| 6 | 1WF5-039 | Screw | 2 | |
| 7 | 220WF2-004 | Top cover | 1 | |
| 8 | 21WF4-047 | Screw | 10 | SM11/64" × 40 |
| 9 | 199WF2-017 | Upper thread guide | 1 | |
| 10 | 21WF1-062 | Screw | 1 | SM3/16" × 32 |
| 11 | 92WF2-007 | Cover (2) | 1 | |
| 12 | 199WF2-003 | Side cover | 1 | |
| 13 | 21WF4-047 | Screw | 2 | SM11/64" × 40 |
| 14 | 92WF2-008 | Screw | 1 | |
| 15 | 199WF2-020 | Back cover | 1 | |
| | 119WF2-004 | Back cover | 1 | |
| 16 | 199WF2-019 | Seal | 1 | |
| 17 | 1WF1-011 | Screw | 6 | SM11/64" × 40 |
| 18 | 92WF2-030 | Rubber plug | 2 | |
| 19 | 92WF2-011 | Cover plate | 1 | |
| 20 | 1WF1-011 | Screw | 1 | SM11/64" × 40 |
| 21 | 92WF2-004 | Thread take-up lever cover | 1 | |
| 22 | 13WF2-045 | Screw | 1 | SM15/64" × 28 |
| 23 | 92WF2-013 | Thread guide | 1 | |
| 24 | 36WF1-016 | Screw | 1 | SM9/64" × 40 |
| 25 | 92WF2-014 | Thread guide | 1 | |
| 26 | 1WF1-007 | Screw | 2 | SM9/64" × 40 |
| 27 | 92WF2-015 | Lower thread guide assy. | 1 | |
| 28 | 92WF2-015A | Thread guide | 1 | |
| 29 | 92WF2-015B | Plate | 1 | |
| 30 | 92WF2-015C | Spring | 1 | |
| 31 | 92WF2-015D | Screw | 1 | SM9/64" × 40 |
| 32 | 1WF1-007 | Screw | 1 | SM9/64" × 40 |
| 33 | 17WF1-009 | Rubber plug | 1 | |
| 34 | 92WF2-029 | Rubber plug | 2 | |
| 35 | 50WF2-022 | Plate for take-up spring | 1 | |
| 36 | 1WF1-026 | Screw | 1 | SM9/64" × 40 |
| 37 | 199WF2-004 | Leaf spring | 1 | |
| 38 | 2KT5-005 | Screw | 2 | SM11/64" × 40 |

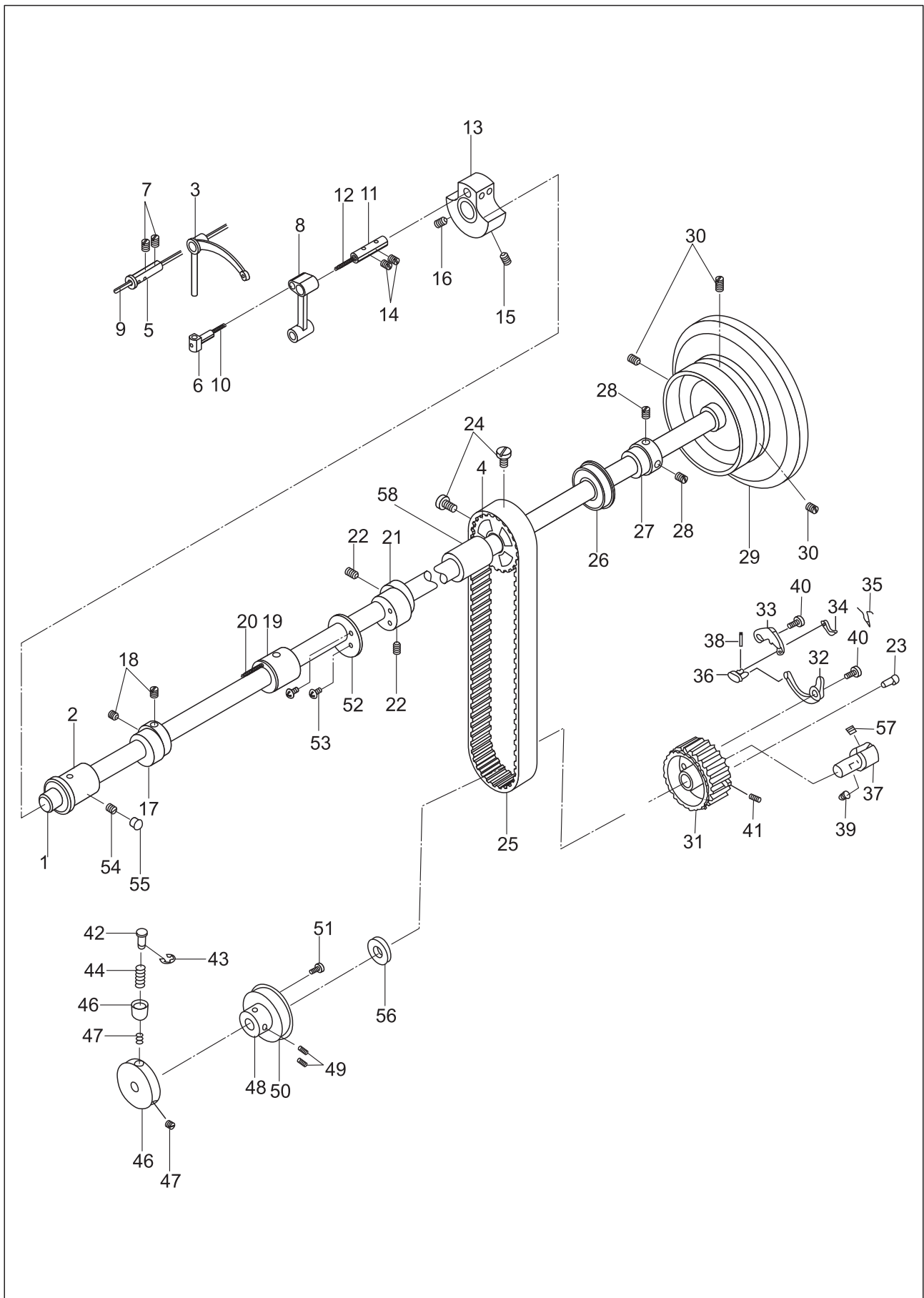
1. Casting mechanism



1. Casting mechanism

| No. | Parts No. | Name of parts | Qty. | Remarks |
|-----|------------|--------------------|------|---------------------|
| 39 | 199WF2-005 | Needle plate | 1 | |
| 40 | 199WF2-006 | Screw | 2 | |
| 41 | 199WF2-007 | Sliding plate (L) | 1 | |
| 42 | 199WF2-008 | Sliding plate (R) | 1 | |
| 43 | 92WF2-028 | Rubber plug | 1 | |
| 44 | 92WF2-028 | Rubber plug | 1 | |
| 45 | 92WF2-032 | Rubber plug | 1 | |
| 46 | 92WF2-031 | Rubber plug | 1 | |
| 47 | 59WF1-010 | Caution mark | 1 | |
| 48 | 21WF4-050 | Ground wire mark | 1 | |
| 49 | 199WF2-009 | Oil stop plate(L) | 1 | |
| 50 | 199WF2-010 | Screw | 3 | |
| 51 | 1KT1-005 | Caution label | 1 | |
| 52 | 199WF2-011 | Rubber plug | 2 | |
| 53 | 199WF2-012 | Auxiliary cover | 1 | |
| 54 | 199WF2-013 | Plate | 1 | |
| 55 | 50WF2-031 | Screw | 2 | |
| 56 | 199WF2-014 | Screw | 2 | SM9/64" × 40 |
| 57 | 26210 | Screw | 1 | SM15/64" × 28 |
| 58 | | Pin | 1 | GB/T 879.1 4.5 × 20 |
| 59 | 199WF2-015 | Rubber plug | 2 | |
| 60 | 204WF2-004 | Screw | 1 | |
| 61 | 204WF2-007 | Slide plate(front) | 1 | |
| 62 | 21WF4-064 | Screw | 1 | |
| 63 | 204WF2-008 | Support plate | 1 | |
| 64 | 7KT4-030 | Screw | 2 | |
| 65 | 220WF2-005 | Cover | 1 | |

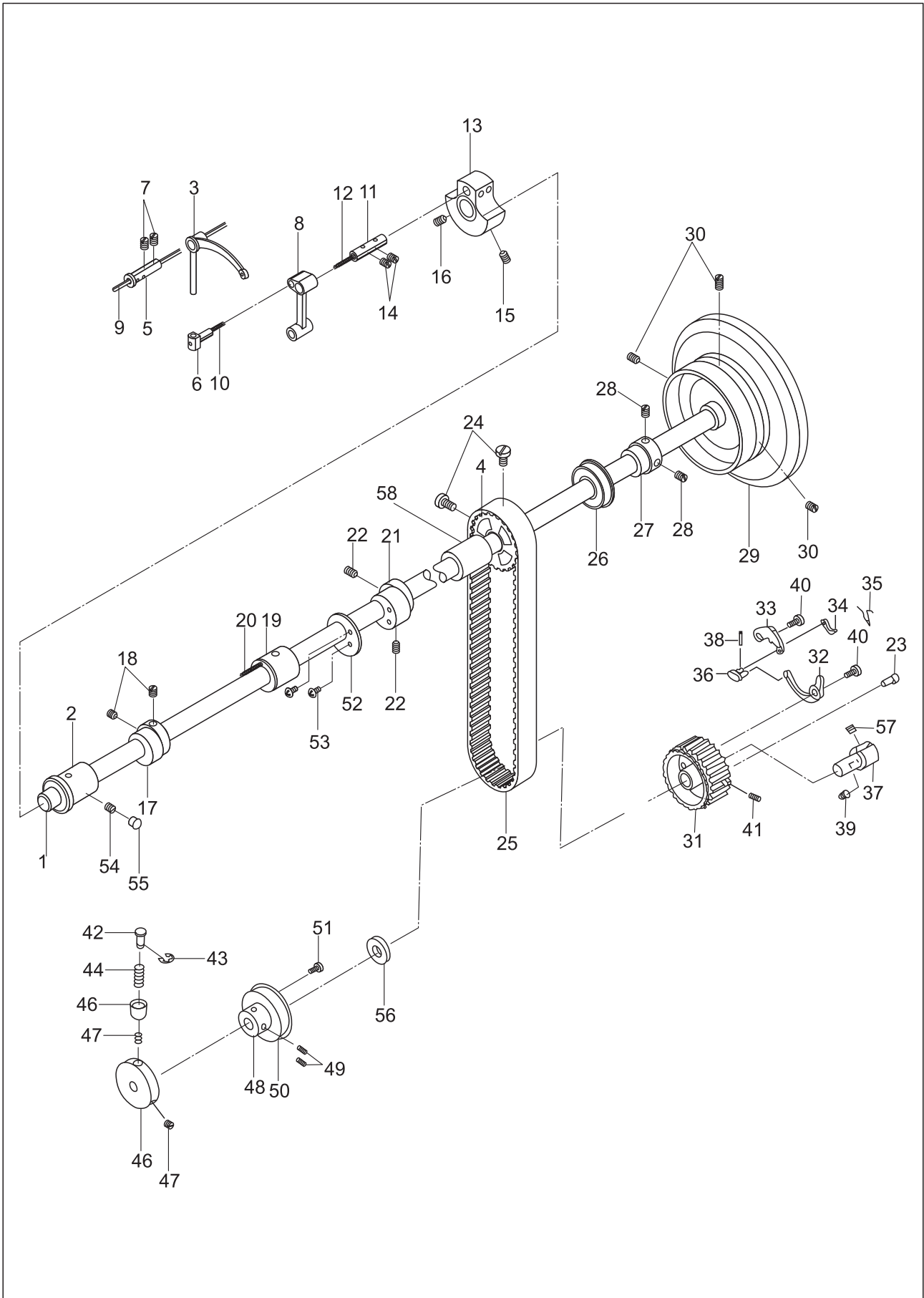
2. Arm shaft & thread take-up mechanism



2. Arm shaft & thread take-up mechanism

| No. | Parts No. | Name of parts | Qty. | Remarks |
|-----|------------|-----------------------------|------|--------------------|
| 1 | 220WF1-001 | Arm shaft | 1 | |
| 2 | 92WF1-009 | Left bushing, arm shaft | 1 | |
| 3 | 199WF1-001 | Thread take-up lever | 1 | |
| 4 | 199WF1-002 | Synchronized pulley assy. U | 1 | |
| 5 | 16WF1-010 | Pin shaft | 1 | |
| 6 | 50WF1-006 | Slide block | 1 | |
| 7 | 1WF50-019 | Screw | 2 | SM15/64" × 28 |
| 8 | 92WF1-006 | Needle bar link | 1 | |
| 9 | 199WF1-003 | Oil wick | 1 | Φ2.5 × 450 |
| 10 | 199WF1-004 | Oil wick | 1 | Long30 |
| 11 | 50WF1-008 | Pin | 1 | |
| 12 | 199WF1-005 | Oil wick | 1 | Φ7 × 30 |
| 13 | 92WF1-007 | Needle bar crank | 1 | |
| 14 | 1WF5-019 | Screw | 2 | SM15/64" × 28 |
| 15 | 50WF1-013 | Screw | 1 | SM9/32" × 28 |
| 16 | 20T2-007 | Screw | 1 | SM9/32" × 28 |
| 17 | 92WF3-014 | Feed cam | 1 | |
| 18 | 1WF2-010 | Screw | 2 | SM1/4" × 40 |
| 19 | 220WF1-007 | Middle bushing, arm shaft | 1 | |
| 20 | 199WF1-006 | Oil wick | 1 | Φ2 × 150 |
| 21 | 92WF3-029 | Feed eccentric cam | 1 | |
| 22 | 1WF2-010 | Screw | 2 | SM1/4" × 40 |
| 23 | 22WF1-015 | Pin | 1 | |
| 24 | 92WF1-014 | Screw | 2 | |
| 25 | 92WF1-034 | Synchronized belt | 1 | |
| 26 | 36WF3-019A | Bearing, arm shaft | 1 | 50105 25 × 47 × 12 |
| 27 | 92WF1-011 | Bushing | 1 | |
| 28 | 57WF-009 | Screw | 2 | M6 |
| 29 | 92WF1-015 | Hand wheel | 1 | |
| 30 | 42WF3-007 | Screw | 2 | |
| 31 | 110WF1-017 | Synchronized pulley assy. L | 1 | |
| 32 | 22WF1-013 | Clutch plate | 1 | |
| 33 | 22WF1-018 | Stop plate | 1 | |
| 34 | 22WF1-016 | plate | 1 | |
| 35 | 22WF1-014 | Twist spring | 1 | |
| 36 | 22WF1-017 | Link | 1 | |
| 37 | 103614 | Bushing | 1 | |
| 38 | B225001 | Pin | 1 | GB91-86 1.2 × 8 |

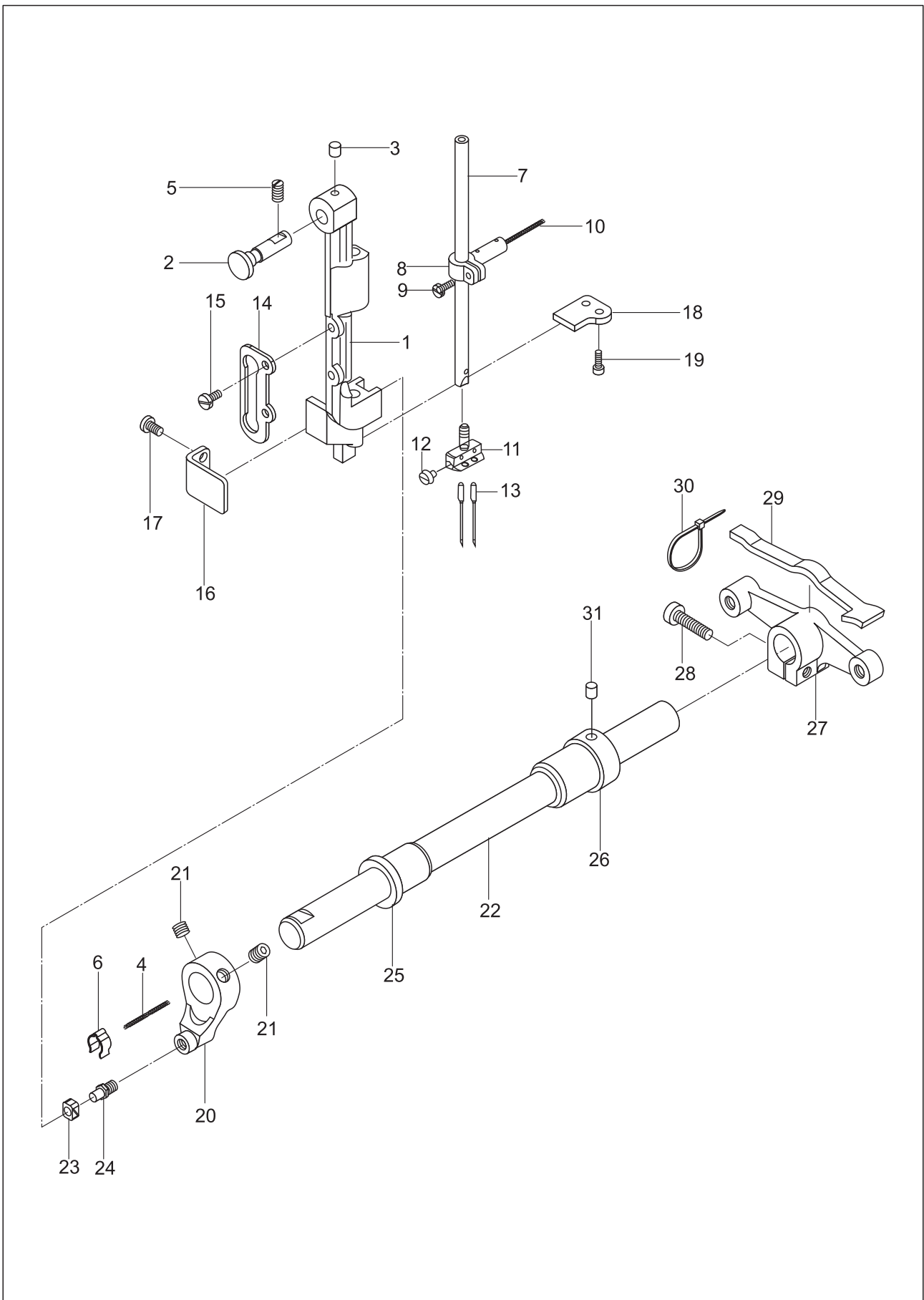
2. Arm shaft & thread take-up mechanism



2. Arm shaft & thread take-up mechanism

| No. | Parts No. | Name of parts | Qty. | Remarks |
|-----|------------|------------------------|------|--------------------|
| 39 | 22WF1-052 | Screw | 1 | SM1/4" × 40 |
| 40 | 22WF1-019 | Screw | 2 | |
| 41 | 22WF1-020 | Screw | 2 | |
| 42 | 199WF1-020 | Push button | 1 | |
| 43 | | Retaining ring | 1 | GB896 5 |
| 44 | 199WF1-021 | Spring | 1 | |
| 45 | 199WF1-022 | Bushing | 1 | |
| 46 | 199WF1-023 | Wheel | 1 | |
| 47 | 18227 | Screw | 1 | SM1/4" × 40 |
| 48 | 199WF1-024 | Collar | 2 | |
| 49 | 21WF1-022 | Screw | 1 | SM1/4" × 40 |
| 50 | | Ball bearing | 2 | 50104 20 × 42 × 12 |
| 51 | 199WF1-025 | Screw | 1 | |
| 52 | 92WF3-030 | Retaining block | 2 | |
| 53 | 7WF5-017 | Screw | 1 | SM11/64" × 40 |
| 54 | 1WF5-019 | Screw | 2 | SM15/64" × 28 |
| 55 | 92WF2-029 | Rubber plug | 1 | |
| 56 | 199WF1-026 | Washer | 2 | |
| 57 | 22WF1-012 | Screw | 1 | |
| 58 | 220WF1-007 | Bushing(R), arm shaft | 1 | |

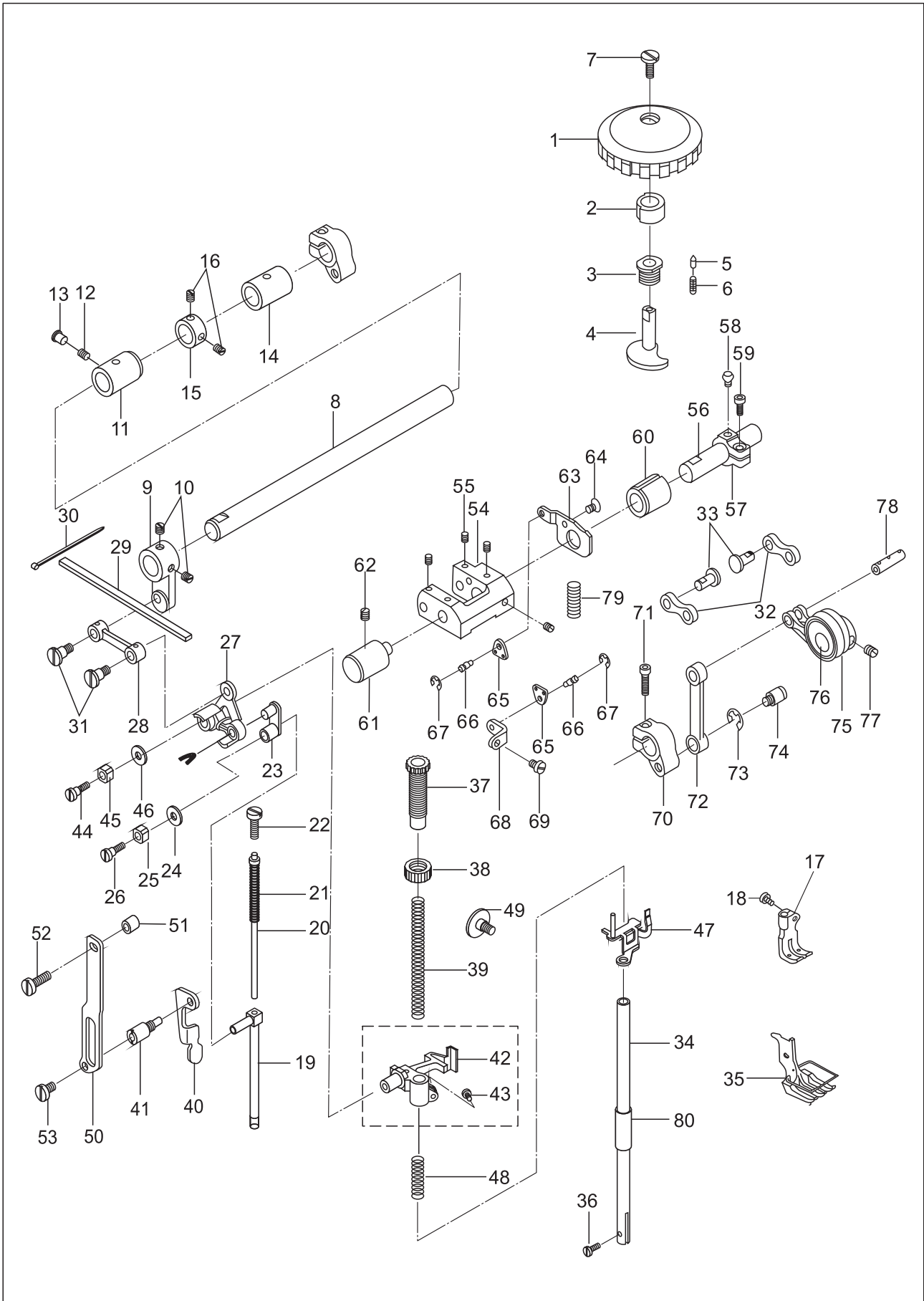
3. Needle bar rocking frame mechanism



3. Needle bar rocking frame mechanism

| No. | Parts No. | Name of parts | Qty. | Remarks |
|-----|------------|--------------------------|------|---------------|
| 1 | 204WF3-001 | Needle bar rocking frame | 1 | |
| 2 | 92WF3-009 | Pin | 1 | |
| 3 | 92WF3-007 | Oil felt | 1 | |
| 4 | 199WF3-001 | Oil wick | 1 | Φ2 × 160 |
| 5 | 42WF3-007 | Screw | 1 | |
| 6 | 92WF3-003 | Leaf spring | 1 | |
| 7 | 204WF3-002 | Needle bar | 1 | |
| 8 | 204WF3-008 | Needle bar joint | 1 | |
| 9 | 36WF3-029B | Screw | 1 | |
| 10 | 199WF3-002 | Oil wick | 1 | Φ6 × 20 |
| 11 | 1WF2-003 | Needle clamp | 1 | |
| 12 | 204WF3-005 | Screw | 1 | SM9/64" × 40 |
| 13 | | Needle | 1 | DP × 17 24# |
| 14 | 50WF3-030 | Guide rail | 1 | |
| 15 | 1WF1-011 | Screw | 2 | SM11/64" × 40 |
| 16 | 92WF3-011 | Position plate (2) | 1 | |
| 17 | W01111 | Screw | 2 | SM11/64" × 40 |
| 18 | 92WF3-010 | Position plate (1) | 1 | |
| 19 | 21WF1-054 | Screw | 2 | SM91/64" × 40 |
| 20 | 92WF3-002A | Crank | 1 | |
| 21 | 92WF3-070 | Screw | 2 | |
| 22 | 220WF3-001 | Rocking shaft | 1 | |
| 23 | 92WF3-004 | Slide block | 1 | |
| 24 | 92WF3-002B | Pin | 1 | |
| 25 | 92WF3-005 | Bushing , L | 1 | |
| 26 | 92WF3-006 | Bushing, R | 1 | |
| 27 | 92WF3-012 | Crank | 1 | |
| 28 | 52WF1-050 | Screw | 1 | |
| 29 | 92WF3-013 | Oil felt | 1 | |
| 30 | 2KT-001A | Band | 1 | |
| 31 | 92WF3-007 | Oil felt | 1 | |

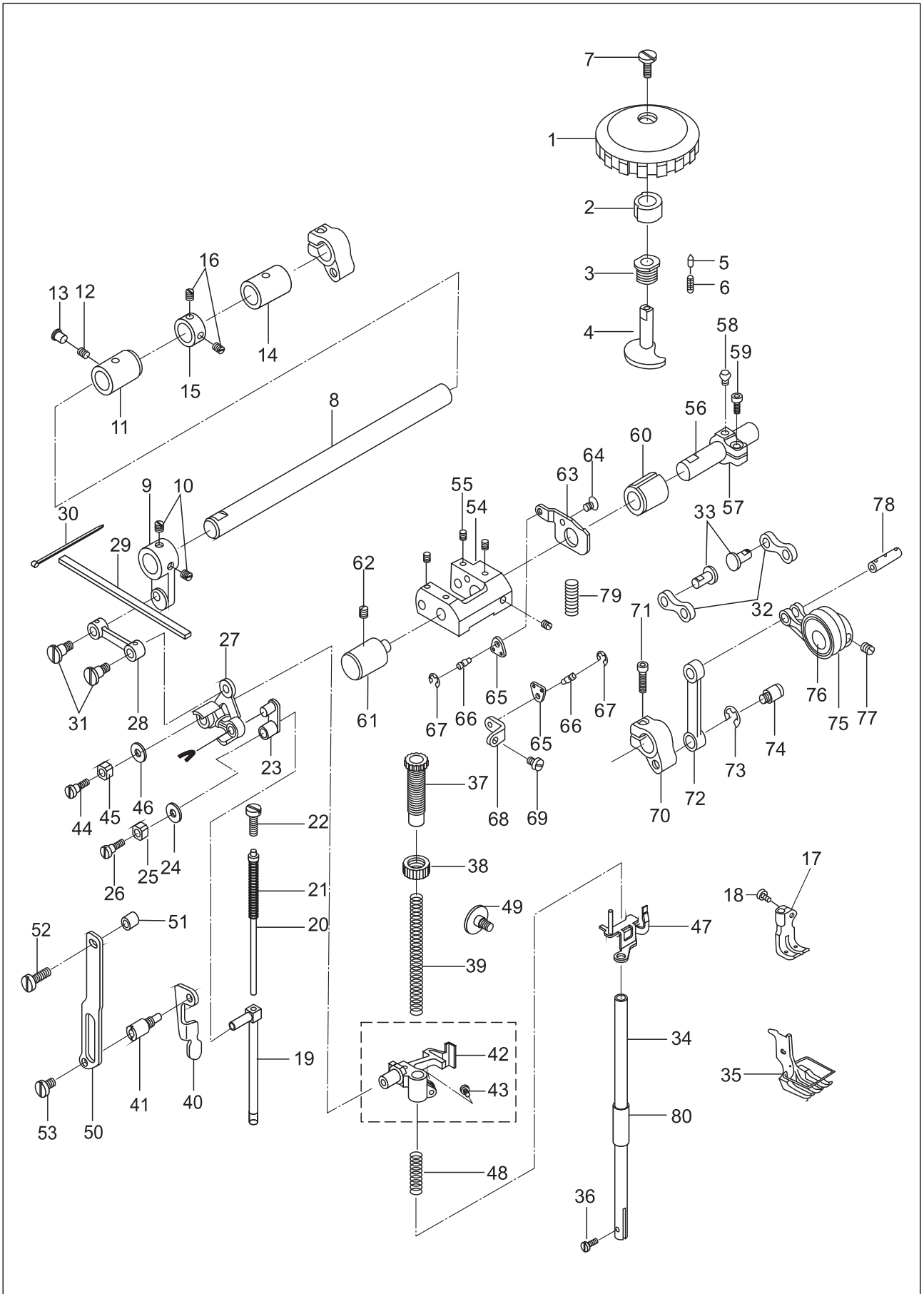
4. Upper feed mechanism



4. Upper feed mechanism

| No. | Parts No. | Name of parts | Qty. | Remarks |
|-----|-------------|--------------------------|------|---------------|
| 1 | 119WF7-017A | Dial | 1 | |
| 2 | 119WF7-017B | Bushing | 1 | |
| 3 | 119WF7-019 | Bushing | 1 | |
| 4 | 119WF7-018 | Shaft | 1 | |
| 5 | 994131 | Pin | 1 | |
| 6 | 93WF8-002 | Spring | 1 | |
| 7 | 302395 | Screw | 1 | |
| 8 | 92WF3-018 | Shaft | 1 | |
| 9 | 92WF3-019 | Crank | 1 | |
| 10 | 2KT5-027 | Screw | 2 | SM1/4" × 40 |
| 11 | 199WF4-001 | Front bushing | 1 | |
| 12 | 1WF5-019 | Screw | 1 | SM15/64" × 28 |
| 13 | 92WF2-029 | Rubber plug | 1 | |
| 14 | 92WF3-021 | Rear bushing | 1 | |
| 15 | 92WF3-022 | Collar | 1 | |
| 16 | 22T3-002B2 | Screw | 2 | SM1/4" × 40 |
| 17 | 204WF4-001 | Walking foot | 1 | |
| 18 | 50WF3-020 | Screw | 1 | |
| 19 | 50WF3-018 | Walking foot lifting bar | 1 | |
| 20 | 92WF3-024 | Spring guide bar assy. | 1 | |
| 21 | 50WF3-032 | Spring | 1 | |
| 22 | 6K1-048 | Regulating screw | 1 | SM15/64" × 28 |
| 23 | 50WF3-027 | Link | 1 | |
| 24 | 50WF3-028 | Felt | 1 | |
| 25 | 50WF3-029 | Slide block | 1 | |
| 26 | 20T4-006 | Screw | 1 | SM11/64" × 40 |
| 27 | 92WF3-025 | Lifting plate | 1 | |
| 28 | 92WF3-026 | Link | 1 | |
| 29 | 92WF3-027 | Oil felt | 1 | |
| 30 | 2KT7-001A | Band | 2 | |
| 31 | 92WF3-028 | Screw | 2 | |
| 32 | 119WF7-011 | Link | 2 | |
| 33 | 994118 | Pin shaft | 2 | |
| 34 | 22WF3-005 | Presser bar | 1 | |
| 35 | 204WF4-022 | Presser foot | 1 | |
| 36 | 22WF3-014 | Screw | 1 | SM9/64" × 40 |
| 37 | 02WF4-003 | Screw | 1 | SM1/2" × 28 |
| 38 | 1KT4-002 | Nut | 1 | SM1/2" × 28 |
| 39 | 92WF4-023 | Spring | 1 | |
| 40 | 92WF4-004 | Foot lift lever | 1 | |
| 41 | 92WF4-005 | Lift lever shaft | 1 | |

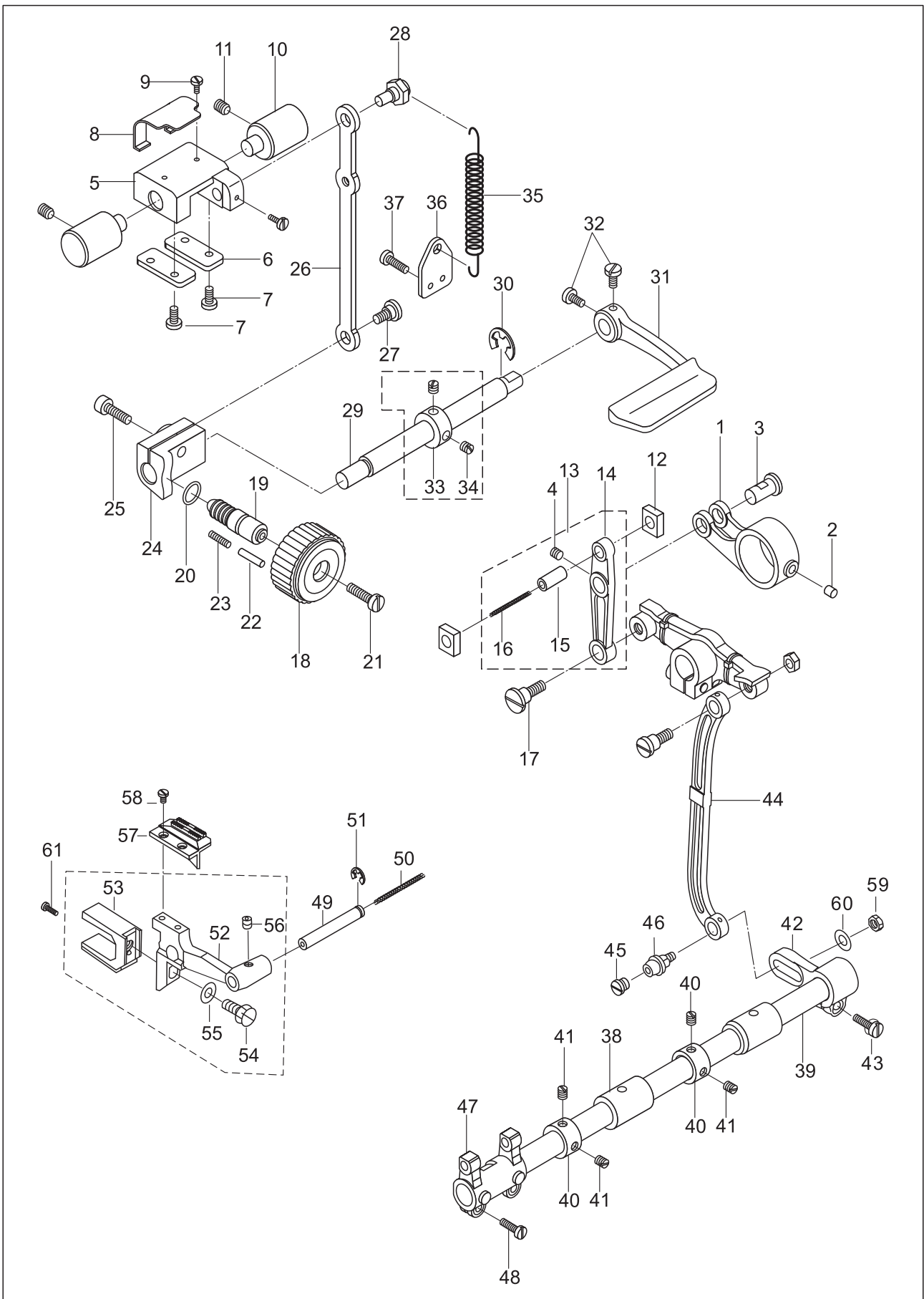
4. Upper feed mechanism



4. Upper feed mechanism

| No. | Parts No. | Name of parts | Qty. | Remarks |
|-----|-------------|-------------------|------|------------------|
| 42 | 92WF4-006 | Bracket | 1 | |
| 43 | 1WF1-011 | Screw | 1 | SM11/64" × 40 |
| 44 | 92WF4-007 | Screw | 1 | |
| 45 | 50WF3-029 | Slide block | 1 | |
| 46 | 92WF4-008 | Washer | 1 | |
| 47 | 92WF4-009 | Releasing plate | 1 | |
| 48 | 50WF4-013 | Spring | 1 | |
| 49 | 50WF4-014 | Screw | 1 | |
| 50 | 92WF4-010 | Guide plate | 1 | |
| 51 | 92WF4-011 | Washer | 1 | |
| 52 | 60WF4-003 | Screw(U) | 1 | SM15/64" × 28 |
| 53 | 52WF3-027 | Screw(L) | 1 | SM15/64" × 28 |
| 54 | 119WF7-001 | Adjusting bracket | 1 | |
| 55 | 6K2-043 | Screw | 4 | |
| 56 | 119WF7-003 | Shaft | 1 | |
| 57 | 119WF7-004 | Crank | 1 | |
| 58 | 119WF7-005 | Screw | 1 | |
| 59 | 72WF5-021 | Screw | 1 | |
| 60 | 119WF7-002 | Bushing | 1 | |
| 61 | 92WF3-037 | Shaft | 1 | |
| 62 | 1WF5-019 | Screw | 1 | SM15/64" × 28 |
| 63 | 119WF7-012 | Retaining plate | 1 | |
| 64 | | Screw | 1 | GB/T819.2 M5 × 8 |
| 65 | 119WF7-014 | Connecting plate | 2 | |
| 66 | 119WF7-015 | Screw | 2 | |
| 67 | | Retaining ring | 2 | GB896 5 |
| 68 | 119WF7-016 | Hanger | 1 | |
| 69 | 50WF3-089 | Screw | 1 | |
| 70 | 119WF7-009 | Crank | 1 | |
| 71 | 80WF6-025 | Screw | 1 | |
| 72 | 119WF7-008B | Link | 1 | |
| 73 | | Retaining ring | 1 | GB896 8 |
| 74 | 119WF7-010 | Screw | 1 | |
| 75 | 119WF7-008A | Link | 1 | |
| 76 | 119WF7-007 | Needle bearing | 1 | |
| 77 | 21WF1-022 | Screw | 1 | |
| 78 | 119WF7-008C | Pin shaft | 1 | |
| 79 | 119WF7-013 | Spring | 1 | |
| 80 | 50WF4-001 | Bushing | 1 | |

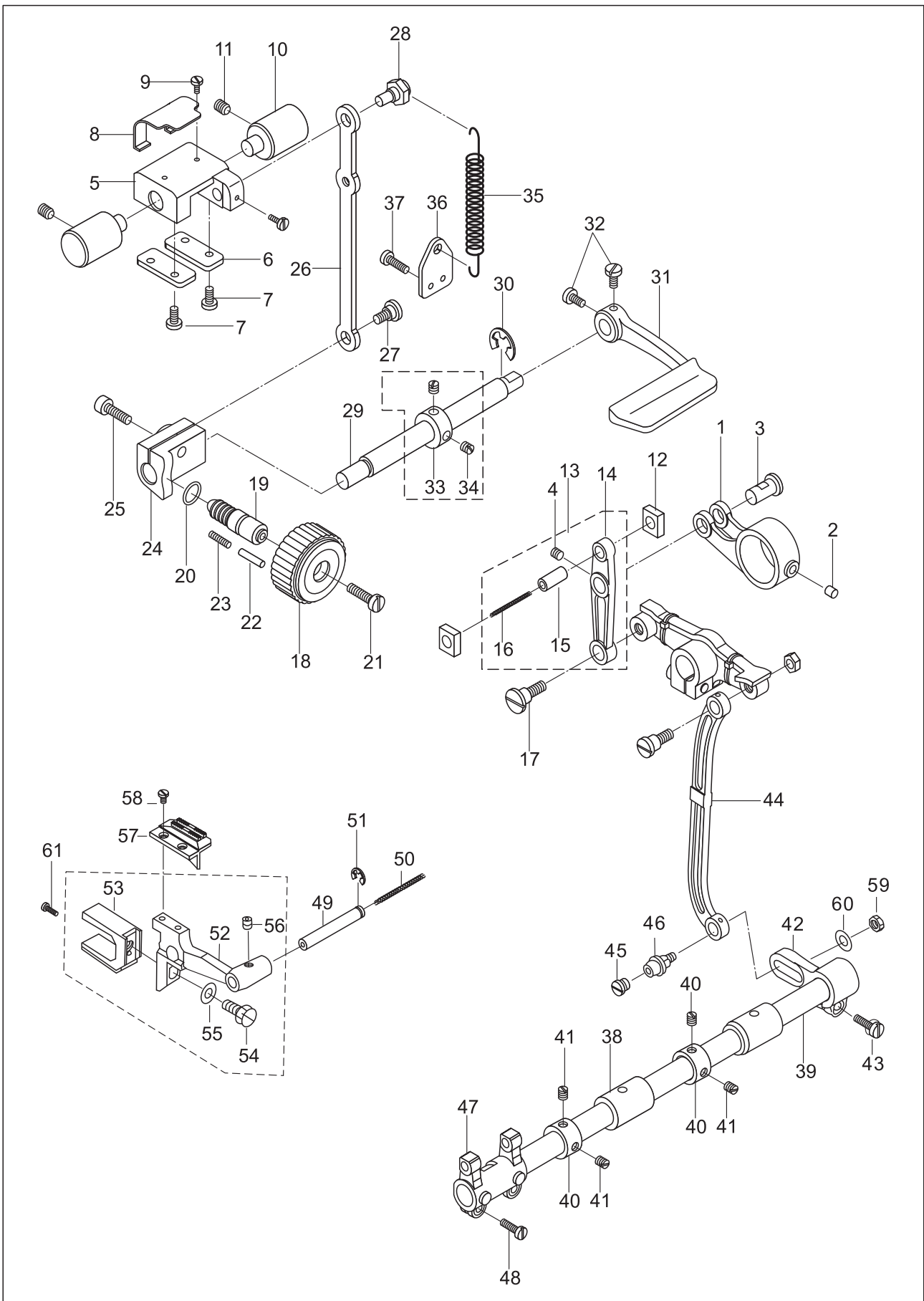
5. Lower feed, reverse and feed regulating



5. Lower feed, reverse and feed regulating

| No. | Parts No. | Name of parts | Qty. | Remarks |
|-----|------------|--------------------------|------|---------------|
| 1 | 92WF3-031 | Feed link | 1 | |
| 2 | 92WF3-032 | Oil felt | 1 | |
| 3 | 92WF-033 | Pin | 1 | |
| 4 | 6K2-043 | Screw | 1 | M5 |
| 5 | 92WF3-034 | Reverse feed bracket | 1 | |
| 6 | 92WF3-035 | Retaining plate | 2 | |
| 7 | 1WF1-011 | Screw | 4 | |
| 8 | 92WF3-036 | Presser plate | 1 | |
| 9 | 16WF1-059 | Screw | 2 | SM9/64" × 40 |
| 10 | 92WF3-037 | Shaft | 2 | |
| 11 | 1WF5-019 | Screw | 2 | SM15/64" × 28 |
| 12 | 92WF3-038 | Slide block | 2 | |
| 13 | 92WF3-039 | Feed rocking bar assy. | 1 | |
| 14 | 92WF3-039A | Feed rocking bar | 1 | |
| 15 | 92WF3-039B | Pin | 1 | |
| 16 | 199WF3-003 | Oil wick | 1 | Φ1.5 × 35 |
| 17 | 92WF3-040 | Screw | 1 | |
| 18 | 92WF3-041 | Stitch regulating dial | 1 | |
| 19 | 92WF3-042 | Screw bar | 1 | |
| 20 | 92WF3-043 | Seal ring | 1 | |
| 21 | 92WF3-044 | Screw | 1 | SM3/16" × 28 |
| 22 | 17WF4-035 | Stop pin | 1 | |
| 23 | 50WF3-058 | Spring | 1 | |
| 24 | 92WF3-045 | Holder | 1 | |
| 25 | 6K2-024 | Screw | 1 | M6 |
| 26 | 92WF3-046 | Link | 1 | |
| 27 | 92WF3-047 | Screw | 1 | |
| 28 | 92WF3-048 | Eccentric pin | 1 | |
| 29 | 92WF3-049 | Reverse feed lever shaft | 1 | |
| 30 | 92WF3-071 | Retaining ring | 1 | GB896 9 |
| 31 | 92WF3-050 | Reverse feed lever | 1 | |
| 32 | 92WF3-051 | Screw | 2 | |
| 33 | 92WF3-052 | Collar | 1 | |
| 34 | 22T3-002B2 | Screw | 2 | SM1/4" × 40 |
| 35 | 92WF3-053 | Spring | 1 | |
| 36 | 92WF3-054 | Spring hook | 1 | |
| 37 | 1WF3-009 | Screw | 2 | SM11/64" × 40 |
| 38 | 92WF3-021 | Feed shaft bushing | 2 | |

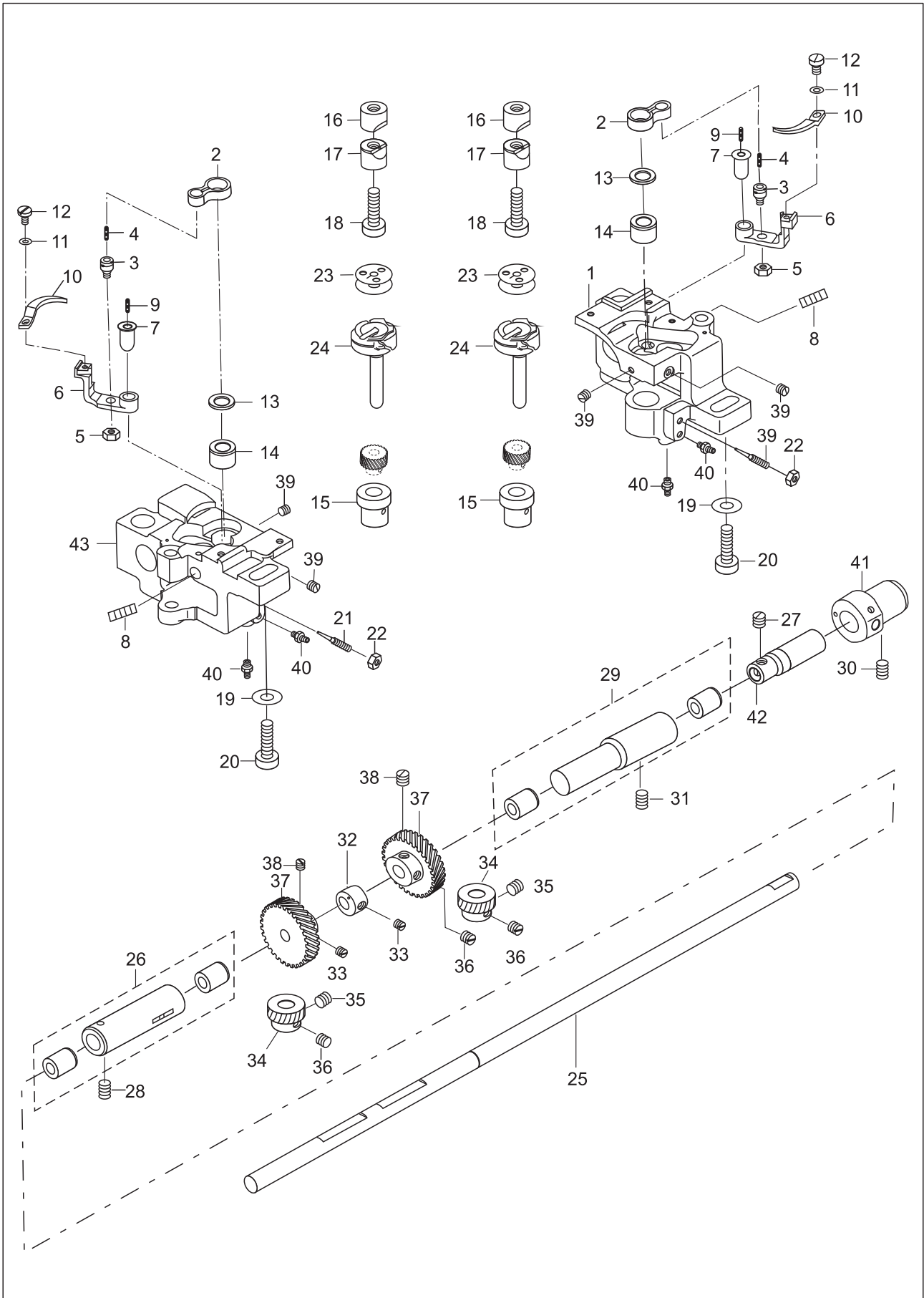
5. Lower feed, reverse and feed regulating



5. Lower feed, reverse and feed regulating

| No. | Parts No. | Name of parts | Qty. | Remarks |
|-----|------------|-------------------|------|---------------|
| 39 | 220WF3-002 | Feed shaft | 1 | |
| 40 | 92WF3-022 | Feed shaft collar | 2 | |
| 41 | 22T3-002B2 | Screw | 4 | SM1/4" × 40 |
| 42 | 119WF3-001 | Driving crank | 1 | |
| 43 | 41WF3-018 | Screw | 1 | SM3/16" × 28 |
| 44 | 92WF3-058 | Link | 1 | |
| 45 | 119WF3-003 | Screw | 1 | |
| 46 | 119WF3-002 | Screw | 1 | |
| 47 | 92WF3-060 | Feed crank | 1 | |
| 48 | 1WF3-009 | Screw | 2 | SM11/64" × 40 |
| 49 | 92WF3-061 | Pin | 1 | |
| 50 | 199WF3-004 | Oil wick | 1 | Φ2.5 × 120 |
| 51 | 92WF3-072 | Retaining ring | 1 | GB896 5 |
| 52 | 199WF3-005 | Feed dog support | 1 | |
| 53 | 199WF3-006 | Lifting fork | 1 | |
| 54 | 42WF1-008 | Screw | 1 | SM15/64" × 28 |
| 55 | 41WF1-009 | Washer | 1 | |
| 56 | 80WF6-036 | Screw | 1 | |
| 57 | 199WF3-007 | Feed dog | 1 | |
| 58 | 199WF3-008 | Screw | 2 | |
| 59 | 22WF3-004 | Nut | 1 | |
| 60 | 71WF3-058 | Washer | 1 | |
| 61 | 13WF6-008 | Screw | 1 | |

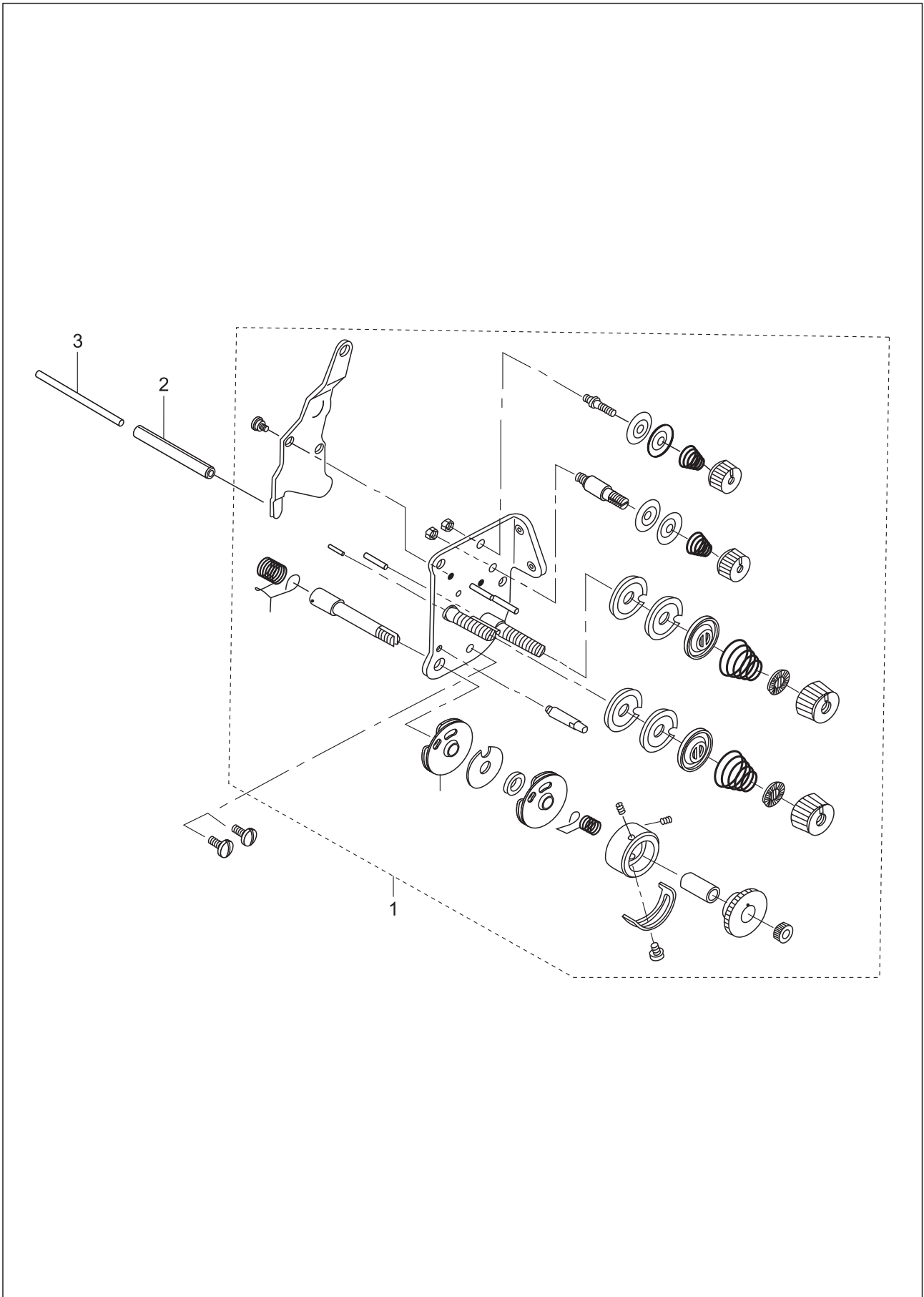
6. Lower shaft and rotating hook



6. Lower shaft and rotating hook

| No. | Parts No. | Name of parts | Qty. | Remarks |
|-----|-------------|-----------------------------------|------|-----------------|
| 1 | 199WF1-027 | Rotating hook saddle(R) | 1 | |
| 2 | 199WF1-028 | Thread opener link | 2 | |
| 3 | 199WF1-029 | Pin | 2 | |
| 4 | 199WF1-030 | Oil wick | 2 | Φ3×15 |
| 5 | 27WF4-008 | Nut | 2 | |
| 6 | 199WF1-031 | Thread opener supporter | 2 | |
| 7 | 199WF1-032 | Shaft | 2 | |
| 8 | 52WF2-030 | Screw | 2 | SM11/64"×40 |
| 9 | 199WF1-033 | Oil wick | 2 | Φ3×20 |
| 10 | 199WF1-034 | Thread opener | 2 | |
| 11 | 36WF1-042 | Washer | 2 | |
| 12 | 21WF2-038 | Screw | 2 | SM9/64"×40 |
| 13 | 199WF1-035A | Washer(optional) | 2 | |
| 14 | 199WF1-036 | Upper bushing, rotating hook | 2 | |
| 15 | 199WF1-037 | Lower bushing, rotating hook | 2 | |
| 16 | 199WF1-038 | Block A | 2 | |
| 17 | 199WF1-039 | Block B | 2 | |
| 18 | 1WF2-060 | Bolt | 2 | |
| 19 | 199WF1-040 | Washer | 2 | |
| 20 | | Bolt | 2 | GB/T 70.1 M8×40 |
| 21 | 92WF1-031 | Screw | 2 | |
| 22 | 27WF4-008 | Nut | 2 | |
| 23 | 199WF1-041 | Rotating hook assy. | 2 | |
| 24 | 1WF2-065 | Bobbin | 2 | |
| 25 | 220WF1-002 | Lower shaft | 1 | |
| 26 | 220WF1-005 | Left bushing, lower shaft | 1 | |
| 27 | 1WF2-009 | Screw | 1 | SM1/4"×40 |
| 28 | 17WF4-016 | Screw | 1 | SM15/64"×28 |
| 29 | 220WF1-006 | Middle bushing assy., lower shaft | 1 | |
| 30 | 17WF4-016 | Screw | 1 | SM15/64"×28 |
| 31 | 17WF4-016 | Screw | 1 | SM15/64"×28 |
| 32 | 204WF1-005 | Feed dog lifting cam | 1 | |
| 33 | 22WF1-022 | Screw | 1 | SM15/64"×28 |
| 34 | 199WF1-046 | Rotating hook shaft gear | 2 | |
| 35 | 21WF1-033 | Screw | 2 | SM1/4"×40 |
| 36 | 21WF1-043 | Screw | 2 | SM1/4"×40 |
| 37 | 199WF1-047 | Lower shaft gear | 2 | |
| 38 | 1WF2-010 | Screw | 4 | SM1/4"×40 |
| 39 | 36WF5-021 | Screw | 4 | SM11/64"×40 |
| 40 | 199WF1-048 | Oil tube connector | 4 | |
| 41 | 199WF1-049 | Bushing | 1 | |
| 42 | 199WF1-050 | Shaft, oil pump | 1 | |
| 43 | 204WF1-002 | Rotating hook saddle(L) | 1 | |

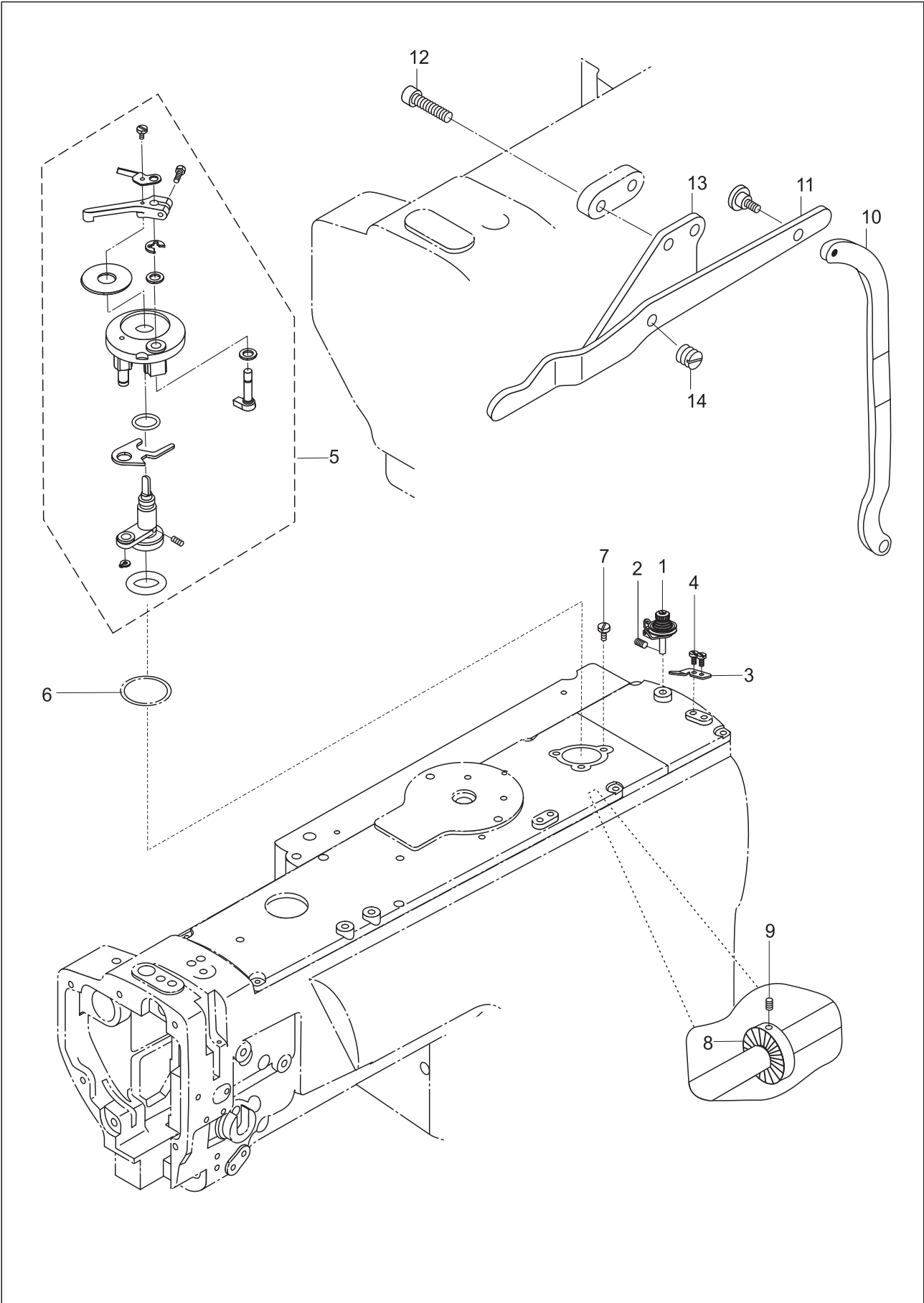
7. Thread tension components



7. Thread tension components

| No. | Parts No. | Name of parts | Qty. | Remarks |
|-----|------------|----------------------|------|-----------------|
| 1 | 204WF2-009 | Thread tension assy. | 1 | GB/T 879.1 6×50 |
| 2 | | Pin | 1 | |
| 3 | 92WF2-020 | Thread release pin | 1 | |

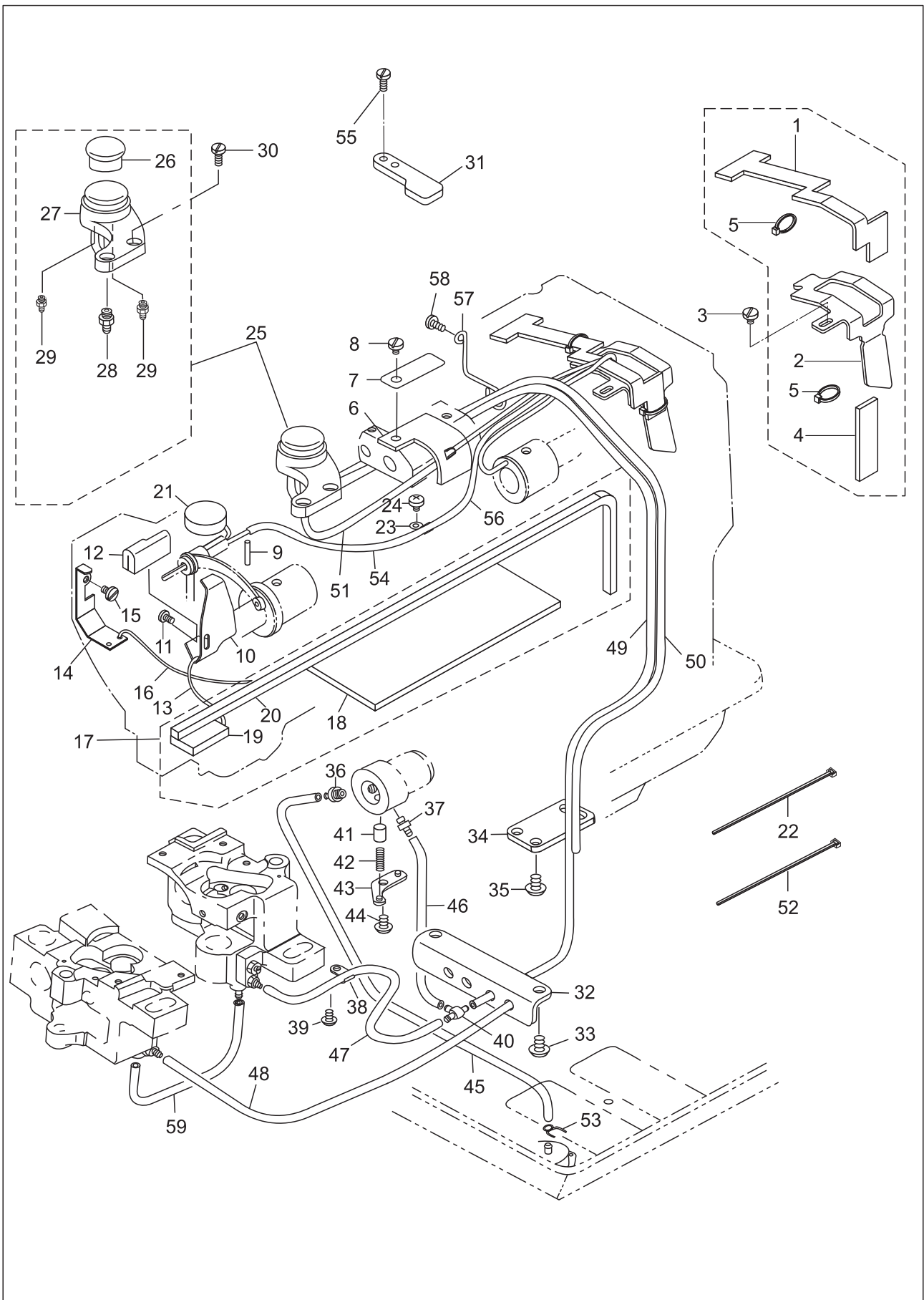
8. Bobbin winder & knee lifter components



8. Bobbin winder & knee lifter components

| No. | Parts No. | Name of parts | Qty. | Remarks |
|-----|------------|-----------------------------|------|------------|
| 1 | 93WF17-017 | Bobbin thread tension assy. | 1 | |
| 2 | 13WF3-062 | Screw | 1 | |
| 3 | 92WF2-036 | Cutter | 1 | |
| 4 | 36WF2-031 | Screw | 2 | |
| 5 | 92WF2-025 | Thread winder assy. | 1 | |
| 6 | 92WF2-026 | Seal ring | 1 | |
| 7 | 92WF2-027 | Screw | 3 | |
| 8 | 220WF4-001 | Friction wheel | 1 | |
| 9 | 6K2-043 | Screw | 2 | |
| 10 | 199WF5-010 | Knee lifter lifting link | 1 | GC20666L25 |
| 11 | 220WF4-002 | Knee lifter rod | 1 | GC20666L25 |
| 12 | 72WF-009 | Screw | 1 | GC20666L25 |
| 13 | 92WF4-012 | Fixed plate | 1 | GC20666L25 |
| 14 | 92WF4-014 | Screw | 1 | GC20666L25 |

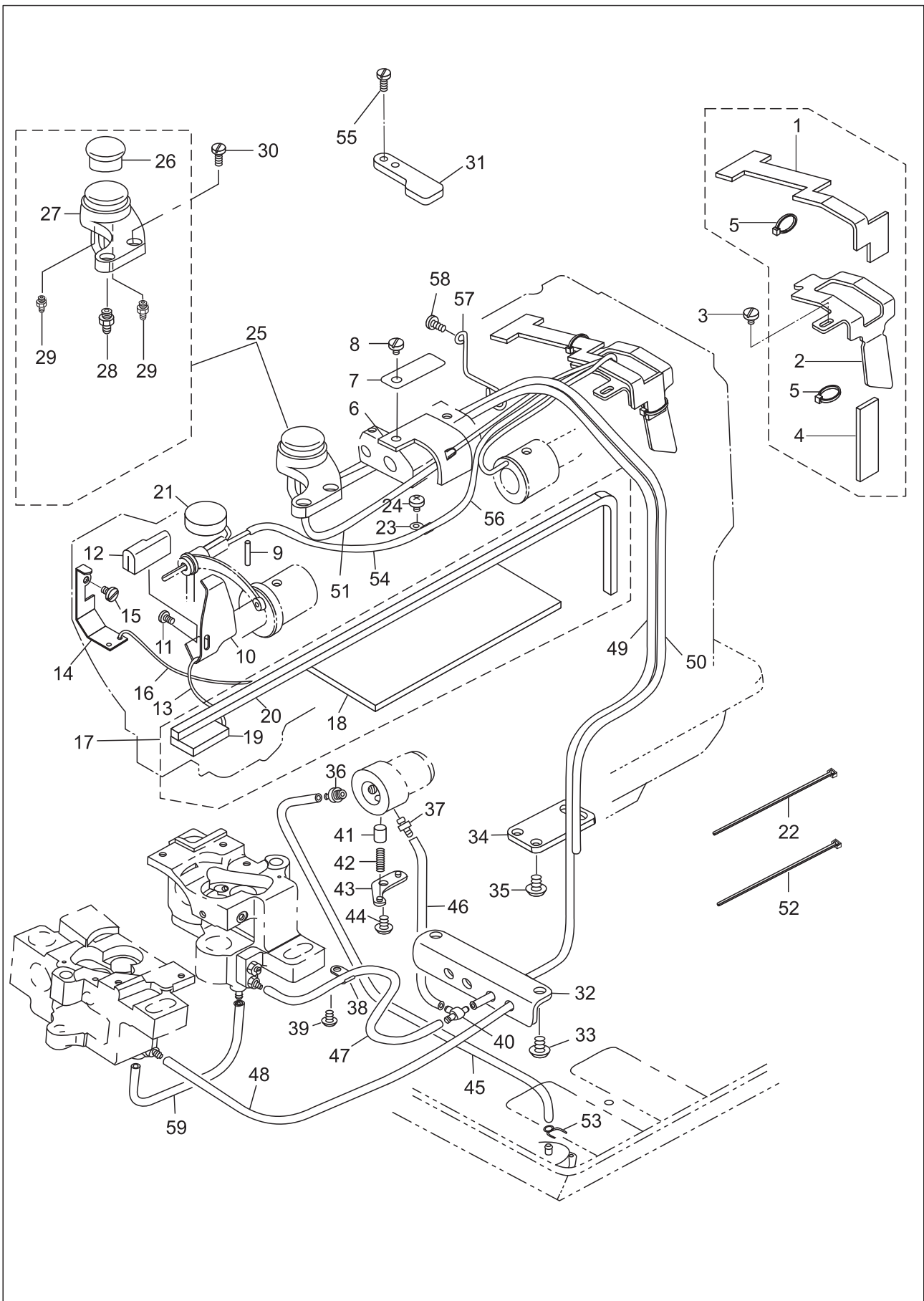
9. Lubrication components



9.Lubrication components

| No. | Parts No. | Name of parts | Qty. | Remarks |
|-----|-------------|------------------|------|---------------|
| 1 | 92WF5-001 | Oil felt | 1 | |
| 2 | 92WF5-002 | Bracket | 1 | |
| 3 | 1WF1-011 | Screw | 1 | SM11/64" × 40 |
| 4 | 92WF5-003 | Oil felt | 1 | |
| 5 | 2KT7-001A | Band | 2 | |
| 6 | 119WF5-003 | Oil felt | 1 | |
| 7 | 119WF5-001 | Plate | 1 | |
| 8 | 119WF5-002 | Screw | 1 | |
| 9 | 92WF5-010 | Oil felt | 1 | |
| 10 | 92WF5-011 | Oil shield | 1 | |
| 11 | 16WF1-059 | Screw | 1 | SM9/64" × 40 |
| 12 | 92WF5-012 | Oil felt | 1 | |
| 13 | | Oil wick | 1 | Φ2 × 250 |
| 14 | 92WF5-013 | Oil shield | 1 | |
| 15 | 36WF1-031D | Screw | 1 | SM11/64" × 40 |
| 16 | | Oil wick | 1 | Φ2 × 250 |
| 17 | 92WF5-014 | Oil felt assy. | 1 | |
| 18 | 92WF5-014A | Felt | 1 | |
| 19 | 92WF5-014B | Felt | 1 | |
| 20 | 92WF5-014C | Oil wick | 1 | |
| 21 | 92WF5-009 | Felt | 1 | |
| 22 | 2KT7-001A | Band | 1 | |
| 23 | 1WF6-036 | Clip | 1 | |
| 24 | 17WF1-020 | Screw | 1 | SM11/64" × 40 |
| 25 | 199WF6-001 | Oil box assy. | 1 | |
| 26 | 199WF6-001A | Oil window | 1 | |
| 27 | 199WF6-001B | Oil box | 1 | |
| 28 | 199WF6-002 | Connector | 1 | |
| 29 | 199WF1-048 | Connector | 2 | |
| 30 | 1WF5-042 | Screw | 2 | SM11/64" × 40 |
| 31 | 92WF5-004 | Plate | 1 | |
| 32 | 199WF6-003 | Oil tube support | 1 | |
| 33 | 27WF5-005 | Screw | 2 | SM15/64" × 28 |
| 34 | 199WF6-004 | Supporter | 1 | |
| 35 | 27WF5-005 | Screw | 2 | SM15/64" × 28 |
| 36 | 199WF6-005 | Connector | 1 | |
| 37 | 199WF1-048 | Connector | 1 | |
| 38 | 1WF6-036 | clip | 1 | |

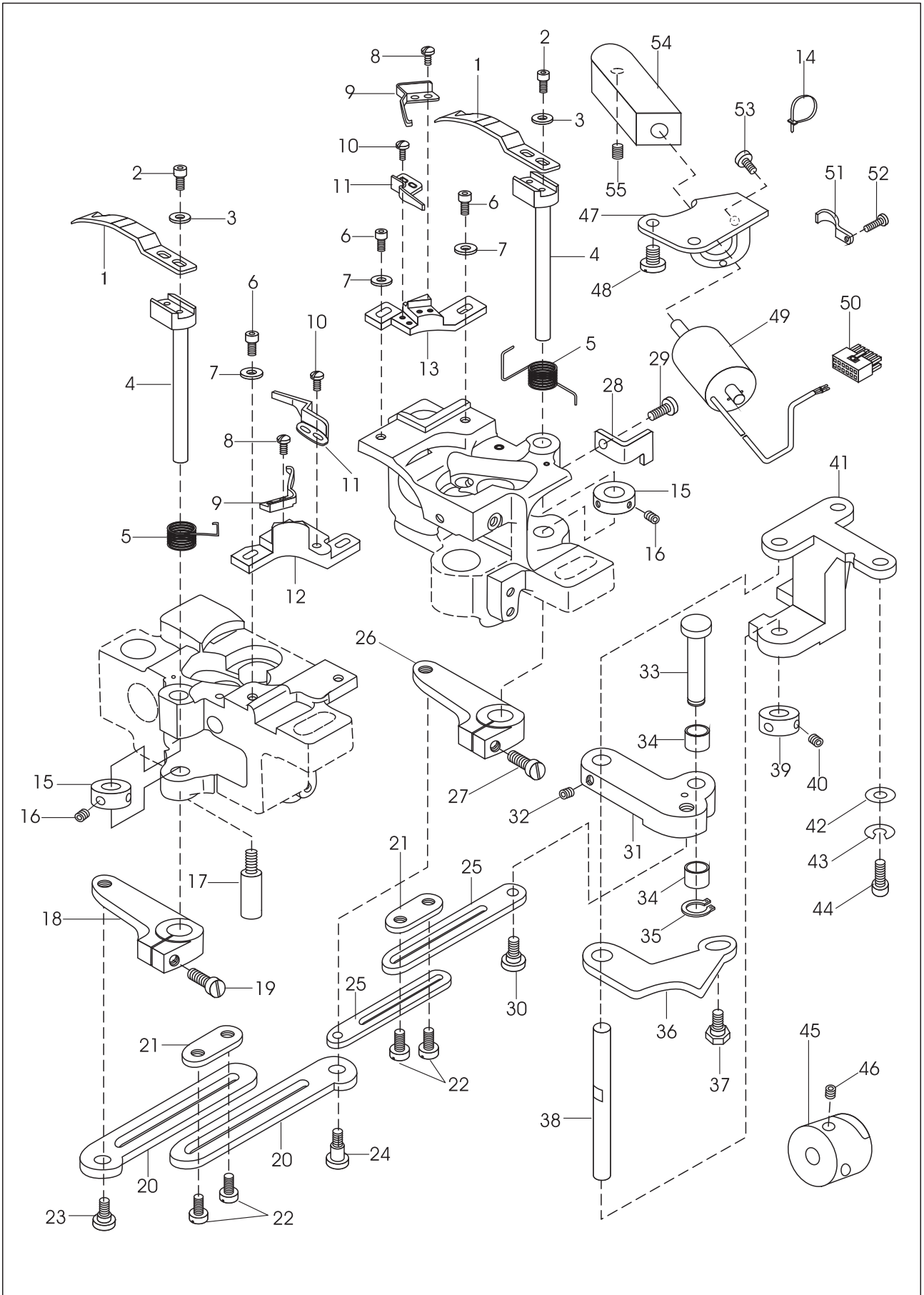
9. Lubrication components



9.Lubrication components

| No. | Parts No. | Name of parts | Qty. | Remarks |
|-----|------------|-----------------|------|-----------------|
| 39 | 17WF1-020 | Screw | 1 | SM11/64" × 40 |
| 40 | 1WF6-029 | Oil distributor | 1 | |
| 41 | 199WF6-007 | Plug | 1 | |
| 42 | 199WF6-008 | Spring | 1 | |
| 43 | 199WF6-009 | Plate | 1 | |
| 44 | 17WF1-020 | Screw | 1 | SM11/64" × 40 |
| 45 | 199WF6-010 | Oil tube | 1 | Φ5 × 1 Long370 |
| 46 | 199WF6-011 | Oil tube | 1 | Φ5 × 1 Long80 |
| 47 | 220WF5-001 | Oil tube | 1 | Φ5 × 1 Long620 |
| 48 | 220WF5-002 | Oil tube | 1 | Φ5 × 1 Long700 |
| 49 | 220WF5-003 | Oil tube | 1 | Φ5 × 1 Long1010 |
| 50 | 220WF-004 | Oil tube | 1 | Φ5 × 1 Long900 |
| 51 | 199WF6-016 | Oil tube | 1 | Φ5 × 1 Long200 |
| 52 | 2KT5-001A | Band | 11 | |
| 53 | 199WF6-017 | Clip | 1 | |
| 54 | 199WF6-018 | Oil tube | 1 | Φ5 × 1 Long225 |
| 55 | W01111 | Screw | 2 | |
| 56 | 199WF6-019 | Oil wick | 1 | Φ5 × 480 |
| 57 | 199WF6-020 | Setting hook | 1 | |
| 58 | 36WF4-017 | Screw | 1 | |
| 59 | 204WF5-001 | Oil tube | 1 | Φ5 × 1 Long100 |

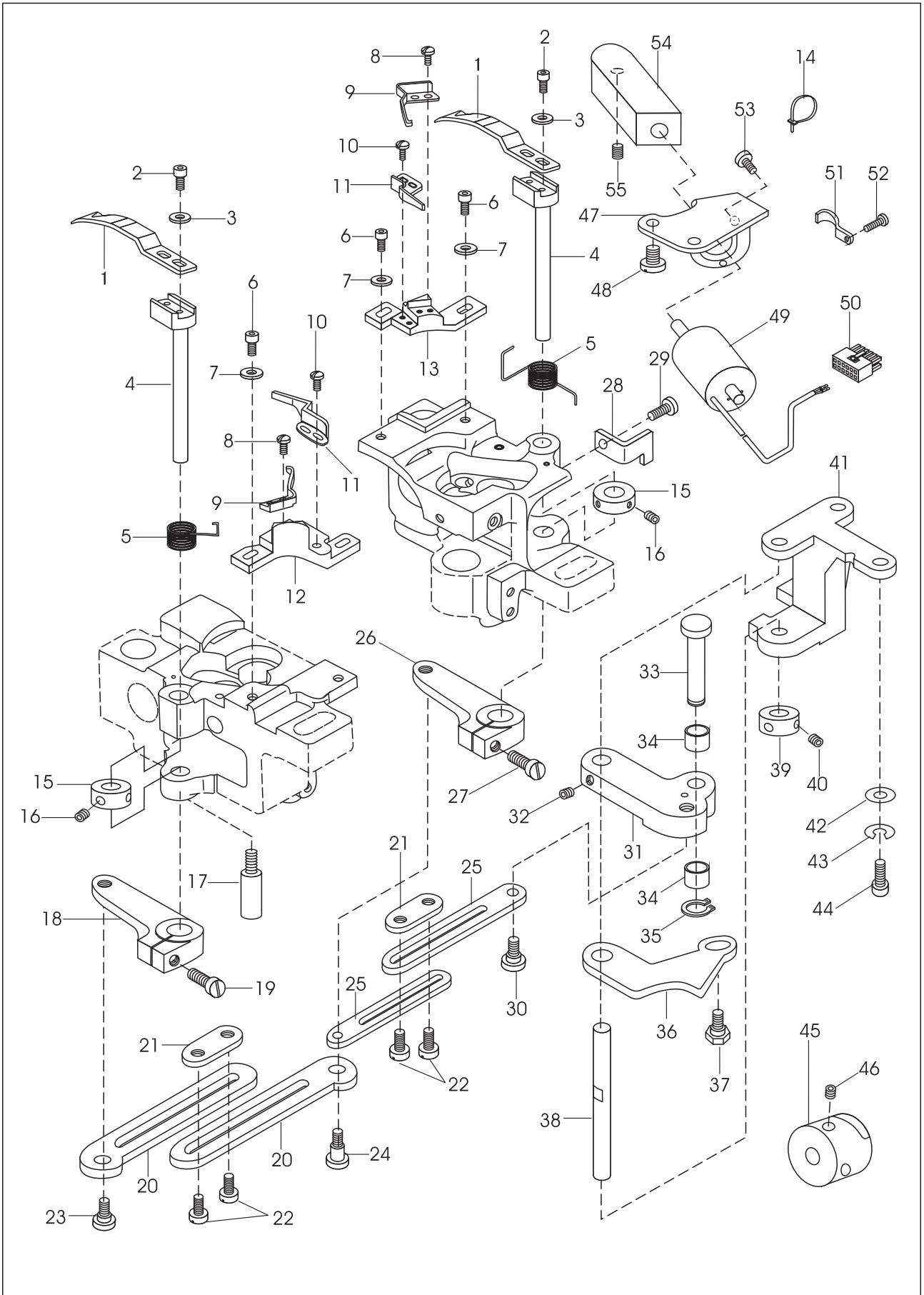
10. Thread trimming mechanism (-D2T3)



10. Thread trimming mechanism (-D2T3)

| No. | Parts No. | Name of parts | Qty. | Remarks |
|-----|------------|----------------------------|------|---------------|
| 1 | 228WF4-026 | Movable knife | 2 | |
| 2 | 228WF4-027 | Screw | 4 | M3 × 8 |
| 3 | | Washer | 4 | GB/T97.1 3 |
| 4 | 228WF4-025 | Movable knife driven shaft | 2 | |
| 5 | 228WF4-028 | Spring | 2 | |
| 6 | 228WF4-035 | Screw | 4 | SM11/64" × 40 |
| 7 | | Washer | 4 | GB/T848 4 |
| 8 | 13WF2-062 | Screw | 4 | SM3/32" × 56 |
| 9 | 228WF4-032 | Spring plate | 2 | |
| 10 | 13WF2-062 | Screw | 4 | SM3/32" × 56 |
| 11 | 228WF4-030 | Fixed knife | 2 | |
| 12 | 228WF4-033 | Fixed knife bracket(L) | 1 | |
| 13 | 228WF4-034 | Fixed knife bracket(R) | 1 | |
| 14 | 2KT5-001a | Band | 1 | |
| 15 | 228WF4-029 | Collar | 2 | |
| 16 | 36WF5-021 | Screw | 4 | SM11/64" × 40 |
| 17 | 228WF4-021 | Screw bar | 1 | |
| 18 | 228WF4-019 | Crank (L) | 1 | |
| 19 | 41WF3-018 | Screw | 1 | SM3/16" × 28 |
| 20 | 228WF4-018 | Link | 2 | |
| 21 | 228WF4-016 | Lock plate | 2 | |
| 22 | 228WF4-017 | Screw | 4 | SM11/64" × 40 |
| 23 | 228WF4-020 | Screw | 1 | |
| 24 | 228WF4-023 | Screw | 1 | |
| 25 | 228WF4-014 | Link | 2 | |
| 26 | 228WF4-022 | Crank(R) | 1 | |
| 27 | 41WF3-018 | Screw | 1 | SM3/16" × 28 |
| 28 | 228WF4-024 | Stop plate | 1 | |
| 29 | 1WF5-042 | Screw | 1 | SM11/64" × 40 |
| 30 | 228WF4-015 | Screw | 1 | |
| 31 | 228WF4-010 | Driven crank | 1 | |
| 32 | 36WF5-025 | Screw | 2 | SM11/64" × 40 |
| 33 | 228WF4-011 | Pin shaft | 1 | |
| 34 | 228WF4-012 | Roller | 2 | |
| 35 | | Retaining ring | 1 | GB896 3.5 |
| 36 | 228WF4-008 | Driven link | 1 | |
| 37 | 228WF4-009 | Screw | 1 | |
| 38 | 228WF4-006 | Shaft | 1 | |
| 39 | 228WF4-007 | Collar | 1 | |
| 40 | 36WF5-025 | Screw | 2 | SM11/64" × 40 |
| 41 | 228WF4-005 | Bracket | 1 | |
| 42 | 17WF4-012 | Washer | 2 | |
| 43 | | Spring washer | 2 | GB93 6 |
| 44 | 60WF4-003 | Screw | 2 | SM15/64" × 28 |

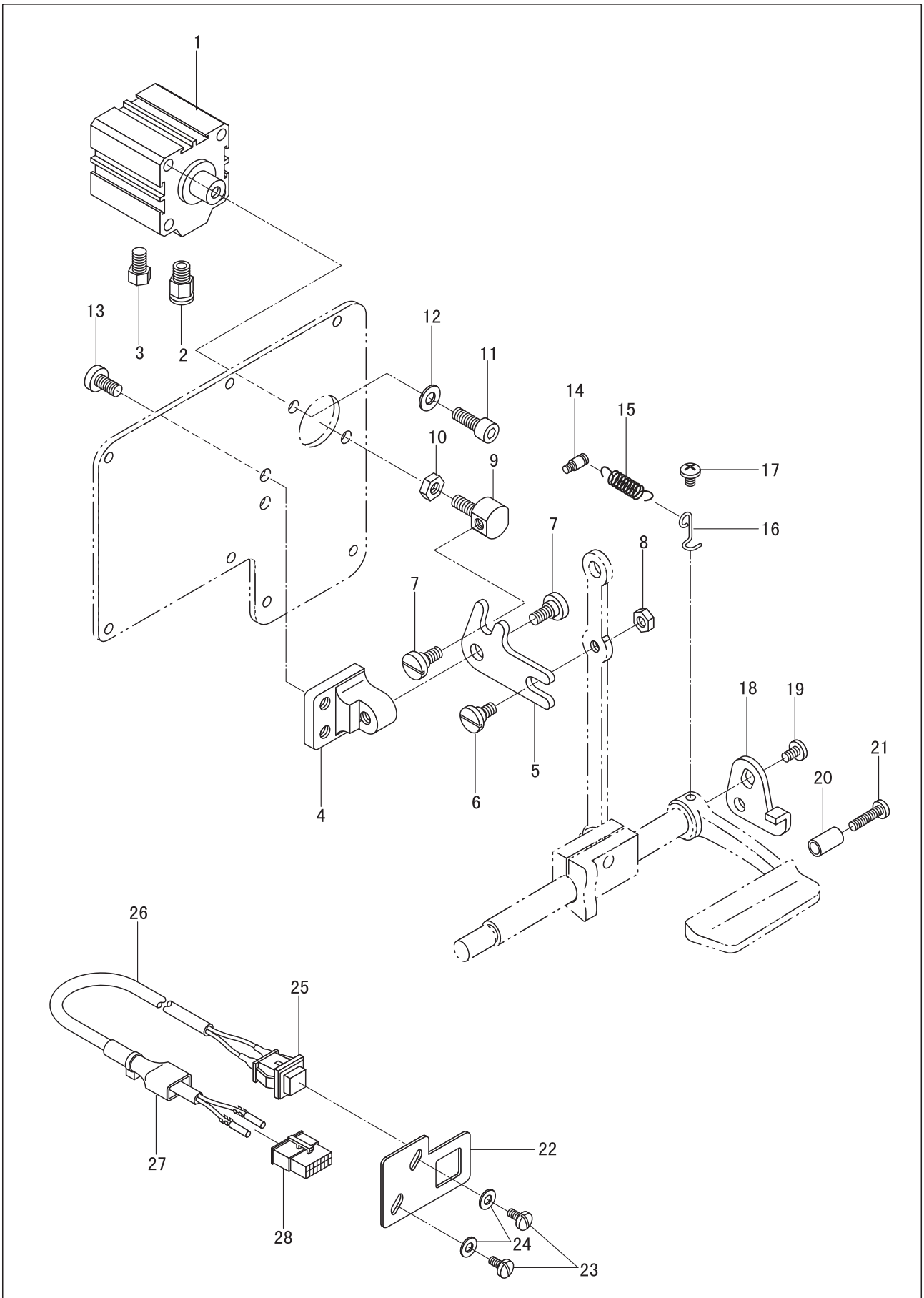
10. Thread trimming mechanism (-D2T3)



10. Thread trimming mechanism (-D2T3)

| No. | Parts No. | Name of parts | Qty. | Remarks |
|-----|------------|-----------------------------|------|---------------|
| 45 | 228WF4-013 | Trimming cam | 1 | |
| 46 | 2KT5-027 | Screw | 2 | SM1/4" × 40 |
| 47 | 228WF4-001 | Solenoid installing bracket | 1 | |
| 48 | 13WF2-045 | Screw | 2 | SM15/64" × 28 |
| 49 | 228WF4-002 | Trimming solenoid | 1 | |
| 50 | 119WF8-018 | Connector | 1 | |
| 51 | 228WF4-003 | Wire clamp | 1 | |
| 52 | 52WF2-030 | Screw | 1 | SM11/64" × 40 |
| 53 | 18WF3-021 | Screw | 2 | M4 × 8 |
| 54 | 228WF4-004 | Link block | 1 | |
| 55 | 21WF1-060 | Screw | 2 | SM11/64" × 40 |

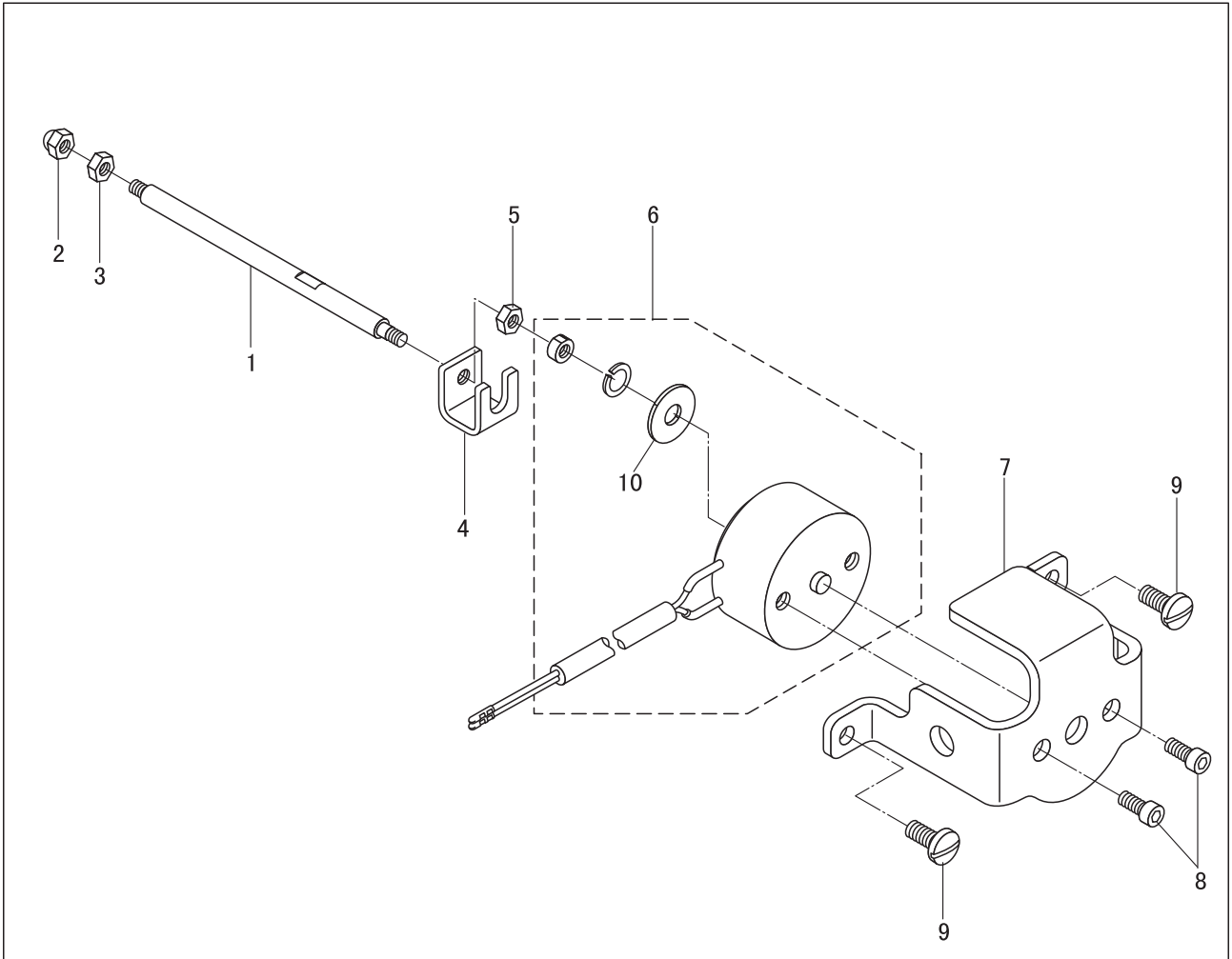
11. Auto-reverse feed mechanism (-D1T3/-D2T3)



11.Auto-reverse feed mechanism (-D1T3/-D2T3)

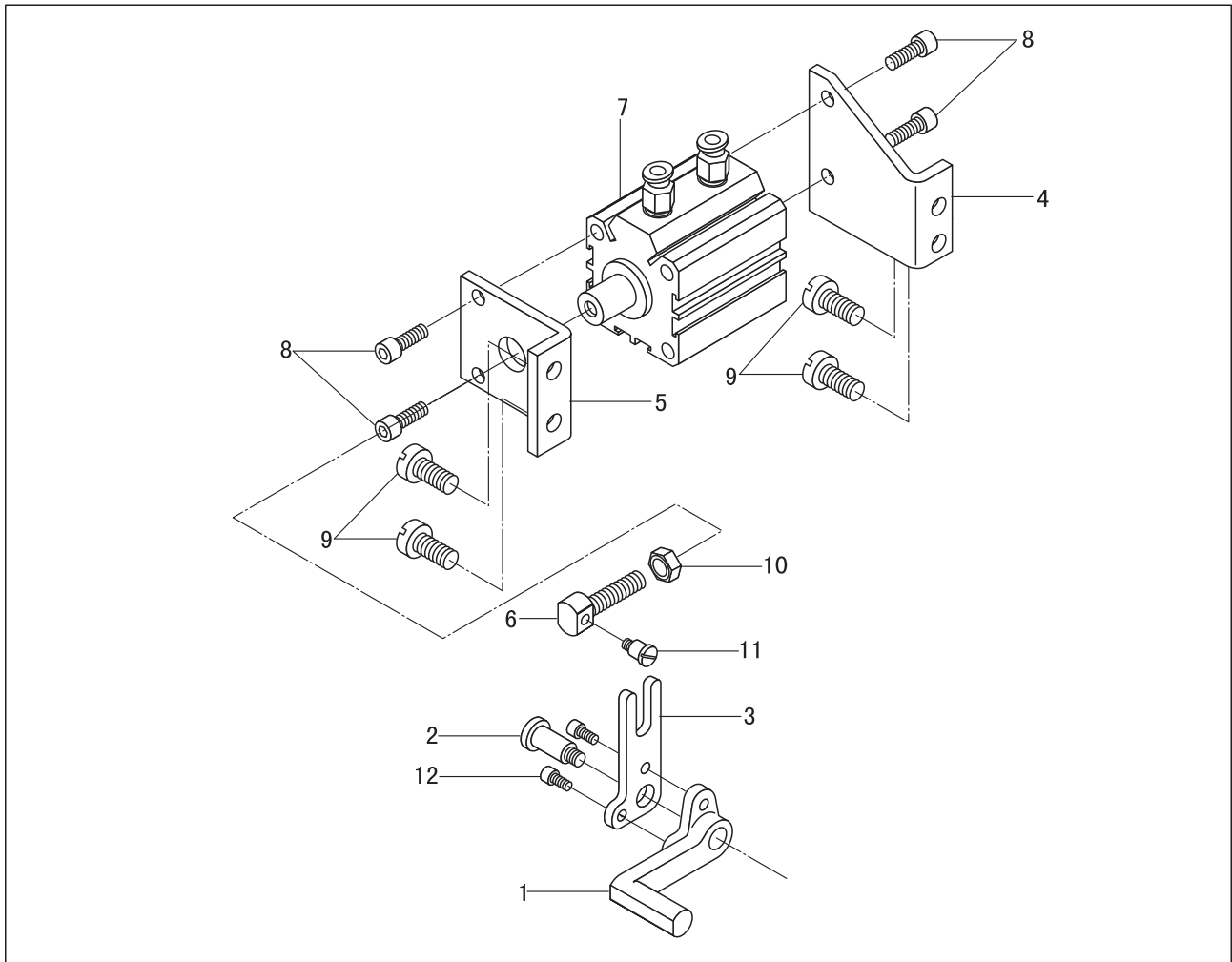
| No. | Parts No. | Name of parts | Qty. | Remarks |
|-----|-------------|-------------------------|------|---------------|
| 1 | 119WF8-001A | Cylinder | 1 | |
| 2 | 119WF8-001C | Joint | 1 | |
| 3 | 119WF8-001B | Silencer | 1 | |
| 4 | 119WF8-004 | Bracket | 1 | |
| 5 | 119WF8-005 | Driven lever | 1 | |
| 6 | 119WF8-003 | Screw | 1 | |
| 7 | 119WF8-006 | Screw | 2 | SM15/64" × 28 |
| 8 | 22WF3-004 | Nut | 1 | |
| 9 | 119WF8-002 | Joint | 1 | |
| 10 | 22T5-011A7 | Nut | 1 | |
| 11 | 52WF5-003 | Screw | 4 | |
| 12 | 72WF2-010 | Washer | 4 | |
| 13 | 36WF1-056 | Screw | 2 | |
| 14 | 119WF8-011 | Screw bar | 1 | |
| 15 | 119WF8-008 | Spring | 1 | |
| 16 | 119WF8-009 | Hook | 1 | |
| 17 | 119WF8-010 | Screw | 1 | |
| 18 | 119WF8-007 | Stop plate | 1 | |
| 19 | 22T5-010D3 | Screw | 1 | |
| 20 | 119WF8-012 | Block | 1 | |
| 21 | 36WF4-027 | Screw | 1 | |
| 22 | 119WF8-013 | Button base | 1 | |
| 23 | 22WF4-014 | Screw | 2 | |
| 24 | 2KT7-009 | Washer | 2 | |
| 25 | 119WF8-019 | Reverse function button | 1 | |
| 26 | 226WF2-001 | Connector assy. | 1 | |
| 27 | 129WF6-014 | Plug cover | 1 | |
| 28 | 119WF8-018 | Plug | 1 | |

12. Tension release mechanism (-D2T3)



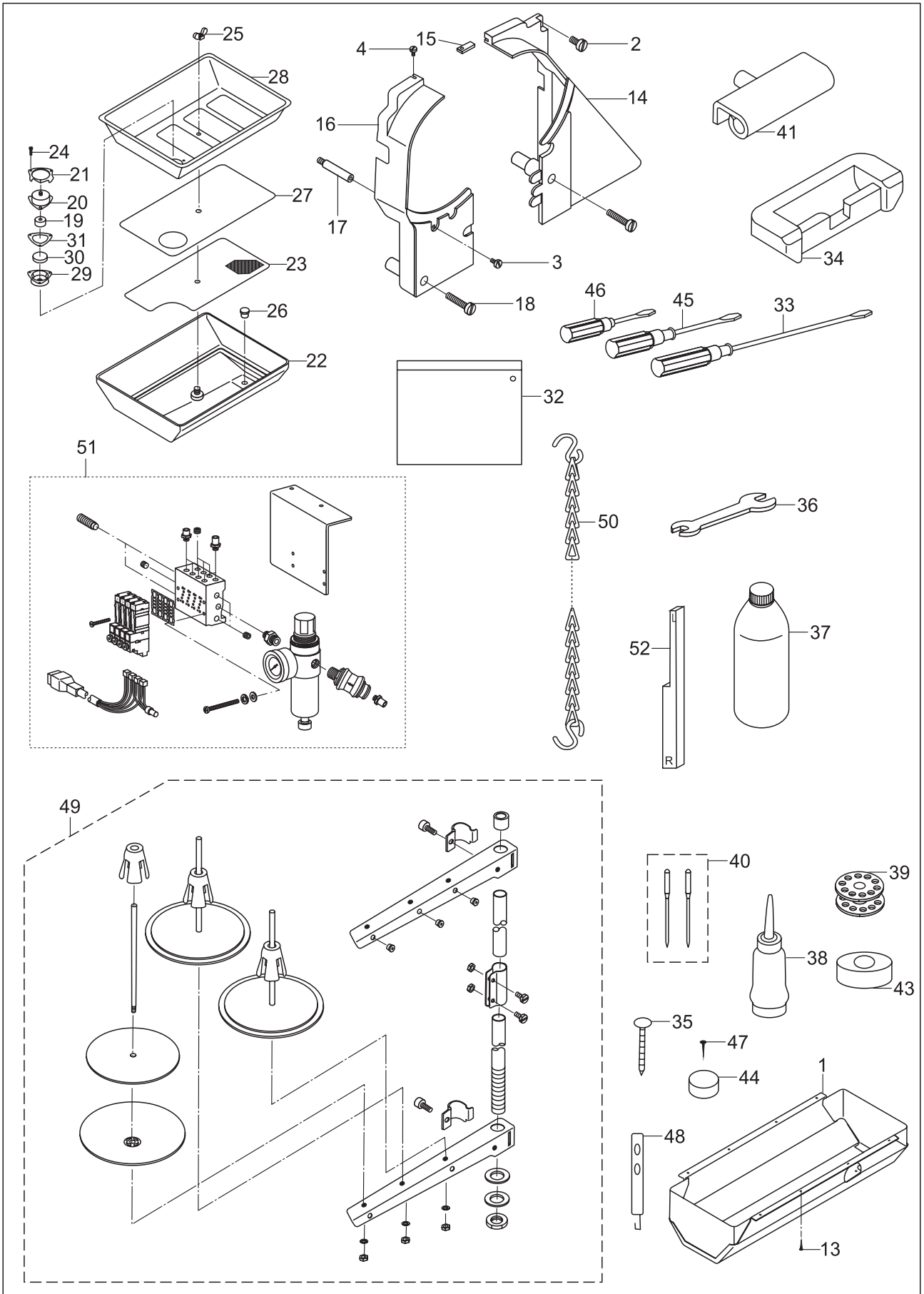
| No. | Parts No. | Name of parts | Qty. | Remarks |
|-----|------------|--------------------------|------|-----------------|
| 1 | 119WF9-004 | Tension release shaft | 1 | |
| 2 | | Nut | 1 | GB923 M4 |
| 3 | 11KT3-021 | Nut | 1 | |
| 4 | 119WF9-003 | Solenoid joint | 1 | |
| 5 | 11KT3-021 | Nut | 1 | |
| 6 | 243WF4-001 | Tension release solenoid | 1 | |
| 7 | 119WF9-002 | Solenoid installing base | 1 | |
| 8 | | Screw | 2 | GB/T70.1 M4 × 5 |
| 9 | 7WF5-017 | Screw | 2 | |
| 10 | 228WF2-004 | Washer | 1 | |

13.Auto-lifer mechanism (-D1T3/-D2T3)



| No. | Parts No. | Name of parts | Qty. | Remarks |
|-----|------------|---------------------|------|---------------|
| 1 | 228WF5-001 | Crank | 1 | |
| 2 | 228WF5-002 | Screw | 1 | |
| 3 | 228WF5-003 | Driven lever | 1 | |
| 4 | 228WF5-004 | Cylinder support(1) | 1 | |
| 5 | 228WF5-005 | Cylinder support(2) | 1 | |
| 6 | 228WF5-006 | Connector | 1 | |
| 7 | 228WF5-008 | Cylinder | 1 | |
| 8 | | Screw | 4 | M6 × 20 |
| 9 | 13WF2-045 | Screw | 4 | SM15/64" × 28 |
| 10 | | Nut | 1 | GB/T6170 M8 |
| 11 | 228WF5-007 | Screw | 1 | |
| 12 | 13WF6-010 | Screw | 2 | M5 × 10 |
| 13 | 93WF23-002 | Joint | 2 | APL6-01 |

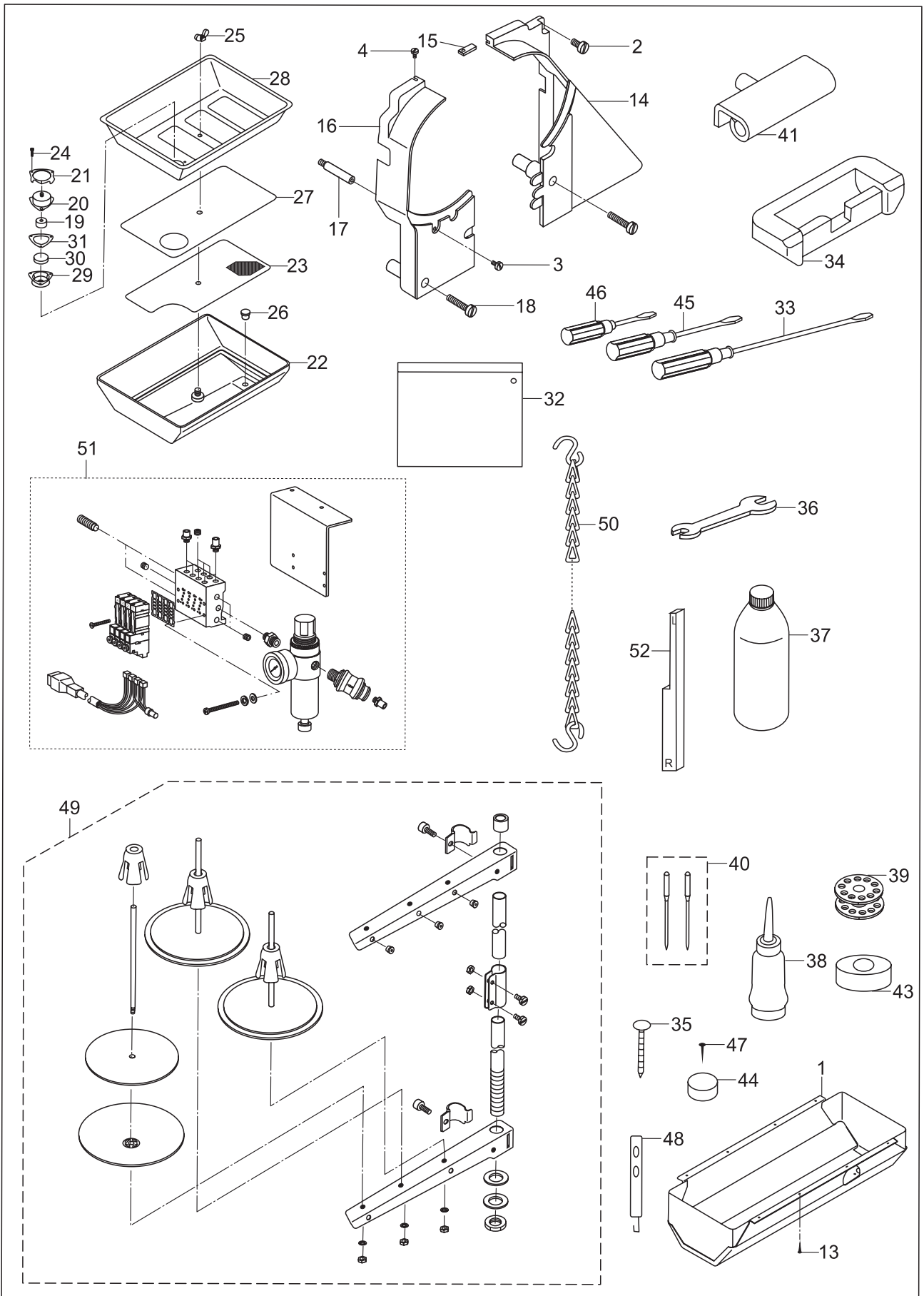
14. Accessories



14. Accessories

| No. | Parts No. | Name of parts | Qty. | Remarks |
|-----|------------|-------------------|------|---------------|
| 1 | 220WF6-001 | Big oil pan | 1 | |
| 2 | 21WF3-012 | Screw | 1 | SM15/64" × 28 |
| 3 | 42WF2-008 | Screw | 1 | SM11/64" × 40 |
| 4 | 2KT6-012 | Screw | 1 | SM11/64" × 40 |
| 13 | | Wooden screw | 8 | GB99 2.5×16 |
| 14 | 92WF6-013B | Belt cover (R) | 1 | |
| 15 | 92WF6-013C | Connector | 1 | |
| 16 | 92WF6-013A | Belt cover (L) | 1 | |
| 17 | 92WF6-016 | Supporting pole | 1 | |
| 18 | 1WF2-060 | Screw | 2 | SM15/64" × 28 |
| 19 | 199WF7-002 | Filter element | 1 | |
| 20 | 199WF7-003 | Cap | 1 | |
| 21 | 199WF7-004 | Fix piece | 1 | |
| 22 | 199WF7-005 | Small oil pan | 1 | |
| 23 | 199WF7-006 | Supporter | 1 | |
| 24 | | Screw | 3 | GB/T65 M2×10 |
| 25 | | Screw | 1 | GB62 M5 |
| 26 | 199WF7-007 | Plug | 1 | |
| 27 | 199WF7-008 | Filter | 1 | |
| 28 | 199WF7-009 | Tray | 1 | |
| 29 | 199WF7-010 | Case | 1 | |
| 30 | 199WF7-011 | Magnet | 1 | |
| 31 | 199WF7-012 | Seal | 1 | |
| 32 | 33TF-010 | Accessories bag | 1 | |
| 33 | 33TF-012 | Screwdriver (big) | 1 | |
| 34 | 22T9-007F2 | Hinge cushion | 3 | |
| 35 | | Nail | 8 | 3 / 4 |
| 36 | 92WF6-028 | Wrench | 1 | |
| 37 | 1F-009 | Big oil pot | 1 | |
| 38 | 33TF-011 | Small oil pot | 1 | |

14. Accessories



14. Accessories

| No. | Parts No. | Name of parts | Qty. | Remarks |
|-----|------------|----------------------------------|------|--------------|
| 39 | 1WF2-065 | Bobbin | 3 | |
| 40 | | Needle | 3 | DP × 17 24# |
| 41 | 22T9-007F1 | Bed hinge | 2 | |
| 43 | 92WF6-025 | Cushion | 1 | |
| 44 | 92WF6-026 | Oil felt | 4 | |
| 45 | 33TF-013 | Screwdriver (M) | 1 | |
| 46 | 33TF-014 | Screwdriver(S) | 1 | |
| 47 | | Nail | 1 | SG162 Long19 |
| 48 | 92WF2-037 | Thread finger | 1 | |
| 49 | 1F-014 | Thread stand assy. | 1 | |
| 50 | 606082 | Chain assy. | 1 | GC20665L25 |
| 51 | | Air integrator assy. | 1 | |
| 52 | 228WF6-001 | Gauge for fixed knife assembling | 1 | |



1 800 268 1649
www.reliablecorporation.com