

5600TW

2 NEEDLE 25" LONG ARM, WALKING FOOT



The 5600TW two needle, compound feed machine is a big machine. It's so large in fact that we've added a bit of "Reliable magic" by including our #1 SewQuiet servomotor with synchronizer, so you can have all of the advantages of needle positioning functionality at no extra cost. A safety clutch, upper feed adjustment and a built-in bobbin winder complete this very capable machine for sewing medium to heavy weight leather, upholstery, canvas and synthetics.

SPECIFICATIONS

MAXIMUM SEWING SPEED	1,800 RPM	
STITCH LENGTH	0 - 0.35	0 - 9 mm
NEEDLE BAR STROKE	1.41"	36 mm
PRESSURE FOOT LIFT	By hand 0.35 By knee 0.63"	By hand 9 mm By knee 16 mm
NEEDLE SYSTEM #	135 x 17	
THREAD TAKE UP STROKE	2.76"	70 mm
UPPER FEED ADJUSTMENT DIAL	Yes	
GAUGE SET	3/8"	
HOOK TYPE	Rotary - auto lubricated	
LUBRICATION	Automatic	
HEAD DIMENSIONS	39" x 7" x 16"	99.06 x 17.78 x 40.64 cm
SHIPPING DIMENSIONS	65" x 36" x 40"	165.1 x 91.44 x 101.6 cm
SHIPPING WEIGHT	350 lb	158.7 kg
STITCH DIAL REGULATOR	Yes	
REVERSE LEVER	Yes	
COUNTRY OF ORIGIN	China	
WARRANTY	Limited 1 year	

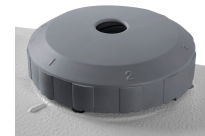
A STITCH IN THE RIGHT DIRECTION



NEEDLE POSITIONER



TOP LOAD BOBBIN



UPPER FEED ADJUSTMENT



BUILT-IN BOBBIN WINDER



STITCH DIAL REGULATOR



UBERLIGHT 3000TL INCLUDED



SUPERIOR STAND

5600TW

2 NEEDLE 25" LONG ARM, WALKING FOOT

