



6000FS

8" STRAIGHT KNIFE

INSTRUCTION MANUAL

6000FS INSTRUCTION MANUAL

RELIABLE. RIGHT THERE WITH YOU.

At Reliable, we do what we love, and take pride in doing it right. You want what's best for the people, places and things that matter in your life - from where you live to what you wear. So do we. From the start, we approach every product with a craftsman's attention to detail and passion for making it right. Quality, functionality, design and customer service play an equally important part in delivering what's right for you. The 6000FS is your best choice for cuts that are up to 8" in height. It's designed with a low center of gravity for ease of handling and features the best power to weight ratio in the industry.

For your safety and to fully enjoy the advantages of this product, please take a few minutes to read all the important safeguards and care instructions. Keep this manual handy and review the product warranty for your reference.

IMPORTANT SAFETY REQUIREMENTS

Before operating the motor, be sure that the electrical supply voltage and current are the same as stamped on the label. Fill the oil cup. Push in the turning knob and turn the machine over a few revolutions by hand to see if the knife moves easily.

MACHINE CARE

1. Clean lint out of sharpener twice a week.
2. Remove cover over cam and clean out lint around screw mechanism in sharpener once a week.
3. Remove knife and clean slides with slot cleaner once a day.
4. To prevent accumulation of lint, do not oil plate rollers.
5. If rollers stick, remove rollers from the plate and wash them with a cleaning solvent.

WARNING

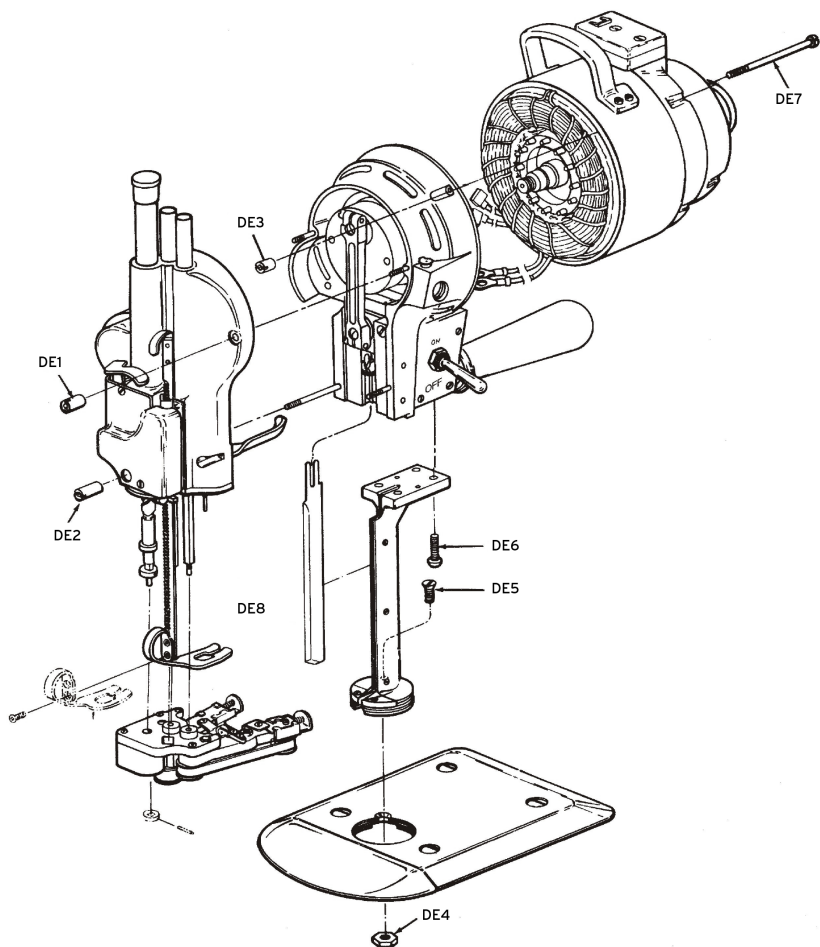
This machine is equipped with a sharp knife. Keep hands away from the knife area at all times. When operating or handling the machine, be sure to only use control levers and handles. Do not operate sharpener without the knife in the machine or the sharpener will become damaged.

SHARPENING THE KNIFE

Take the machine out of the lay. Drop the pressure foot lever, using the pressure foot lever located next to the machine's operating handle. Press the release lever downward slowly, with firm pressure to engage the sharpening mechanism. If lever locks, lift latch lever and restart.

To change the knife blade, press in the turning knob and position the blade to its lowest point. Insert the blade removal tool and loosen the knife lock-bolt. Remove the blade through the bottom of the knife slot. Insert a new blade into the knife slot and tighten the knife lock-bolt.





Part NO.	Description	NO. Req'd
DE1	Sharpener Hold-Down Nut	3
DE2	Sharpener Hold-Down Nut	1
DE3	Front-to-Rear Bearing Nut	4
DE4	Plate Bolt Nut	1
DE5	Standard-to-Bearing Screw	1
DE6	Front-to-Rear-Bearing Screw	4
DE7	Screw	4
DE8	Knife	1



Reliable Corporation ("Reliable") warrants to original purchaser of its products that every product sold by Reliable (a "Reliable Product") is free from defects in material and workmanship for a period of one year from the date of purchase if properly used and maintained. Subject to the conditions and limitations set forth below, Reliable will either repair or replace any part of a Reliable Product that proves defective by reason of improper workmanship or materials. If the defective Reliable Product is no longer available and cannot be repaired effectively or replaced with an identical model, Reliable shall replace the defective Reliable Product with a current Reliable Product of equal or greater value. Repaired parts or replacement products will be provided by Reliable on an exchange basis, and will be either new or refurbished to be functionally equivalent to new. If Reliable is unable to repair or replace a Reliable Product, it will refund the current value of that Reliable Product at the time the warranty claim is made.

This limited warranty does not cover any damage to a Reliable Product that results from improper installation, accident, abuse, misuse, natural disaster, insufficient or excessive electrical supply, abnormal mechanical or environmental conditions, wear and tear resulting from normal use of the product, or any unauthorized disassembly, repair, or modification. This limited warranty does not extend to any indirect, consequential or incidental damages that may be suffered by a user or from the use of a Reliable Product, including without limitation, any liability for third party claims for damage, and is limited to the amount paid by the original purchaser Reliable Product with respect to which this limited warranty protection applies. This limited warranty does not apply with respect to products that have been altered or which are missing serial numbers or for products not purchased directly from Reliable or a dealer authorized by us to sell Reliable Products.

This limited warranty is the only warranty that applies to any Reliable Product, supersedes any and all terms that may be contained in any other document or purchase order and may not be altered or amended except expressly in writing by Reliable.

To obtain a repair or replacement under the terms of this warranty, please contact our customer service group at 1-800-268-1649 or at support@reliablecorporation.com. You will be required to submit an original receipt via fax or e-mail. The receipt must reflect that you are the original purchaser, the product was bought directly from us or from an authorized Reliable dealer and that the warranty claim is being made within the warranty period. You will be issued a return authorization number (RA#) and asked to ship the defective product together with proof of purchase and RA#, prepaid insured to the following address:

Reliable Corporation, 5-100 Wingold Avenue, Toronto, ON M6B 4K7. Freight collect shipments will be refused. The risk of loss or damage in transit will be borne by the customer. Once Reliable receives the defective product, it will initiate the repair or replacement process.

If you have any questions regarding this warranty, you may write to:

Reliable Corporation
100 Wingold Avenue, Unit 5
Toronto, Ontario
Canada M6B 4K7
www.reliablecorporation.com



RELIABLE

1 800 268 1649
www.reliablecorporation.com