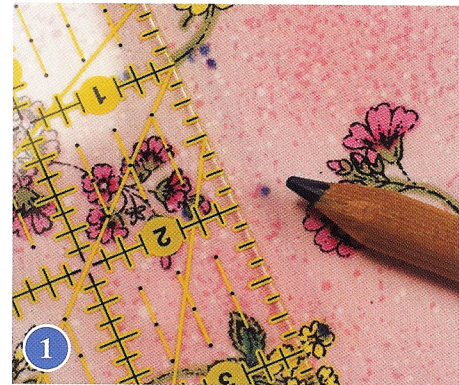


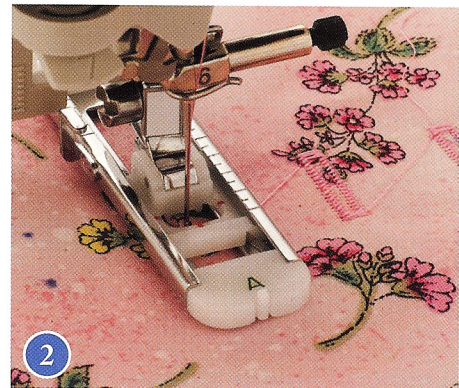
decorative buttonholes

Use traditional buttonholes to create a decorative detail. Weave ribbons or braids through buttonholes on edgings or hems.

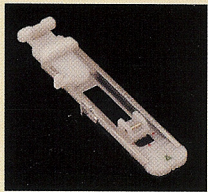
1. Determine the placement for the buttonholes. Mark with a marking pen or pencil. (#1)



2. Measure the width of the trim and adjust the buttonhole foot by sliding the back section to this width. Place the foot on the marks and sew each buttonhole. (#2)



3. Carefully open each buttonhole with a seam ripper or buttonhole cutter. Weave the ribbon, braid or trim through each buttonhole.



**Buttonhole
Foot**

Stitch: Buttonhole, style of choice

Width: Pre-set

Length: Pre-set

Tension: Pre-set

Fabric, needles, notions required:

Cotton solids or prints; universal, size 80/12; all-purpose polyester thread for needle and bobbin or thread of choice; marking pen or pencil