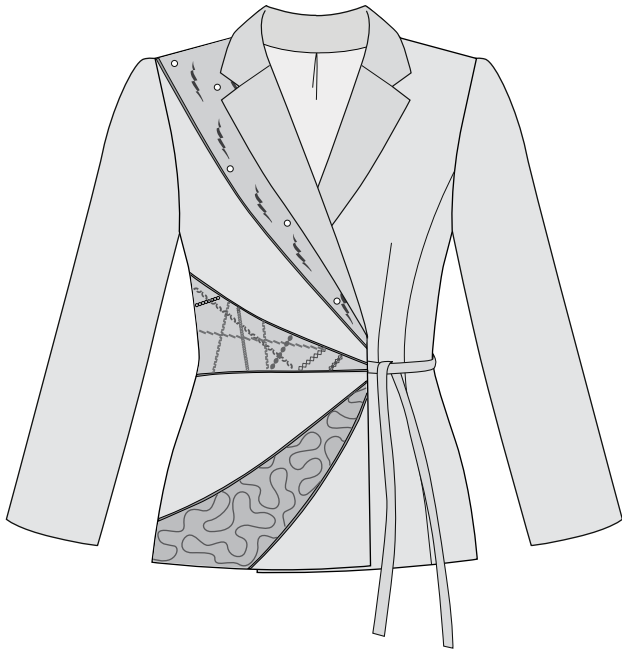


Jacket











Sapphire 875 QUILT/855/835
EXCLUSIVE SENSOR SYSTEM

HUSQVARNA VIKING® Accessories



(Advanced level)

Sewing Supplies:

-  Vogue pattern 8428 or your favorite jacket pattern
-  Blue raw silk fabric for garment, (for amount needed, see sewing pattern)
-  3 different blue fabrics with different textures. We used velvet, thai silk and organza, 16" x 36" (40 x 90 cm). Use one of the fabrics for jacket insert and piping
-  Blue fabric for lining (for amount, see sewing pattern)
-  Fusible Interfacing (for amount see sewing pattern)
-  Blue sewing thread to match the fabric
-  Blue 40 wt. rayon embroidery thread, slightly brighter than the fabric
-  Blue 30 wt. rayon embroidery thread, slightly brighter than the fabric
- Tear-A-Way™ Stabilizer
- Narrow cord for piping 2 ¼ yard (2 m)

-  HUSQVARNA VIKING® SAPPHIRE™ 875 Quilt Sewing Machine
-  Gimping Foot #412 58 05-45
-  Gimp thread #530 37 000-11
or narrow blue cotton cord
-  Gimping/Braiding Guide 412 55 44-45
-  Mini Piping Foot 413 18 30-45
-  Professional Touch Wand #500000905
(US # 140002559)
-  Swarovski Crystals
-  Pictogram Pen #412 08 38 -48

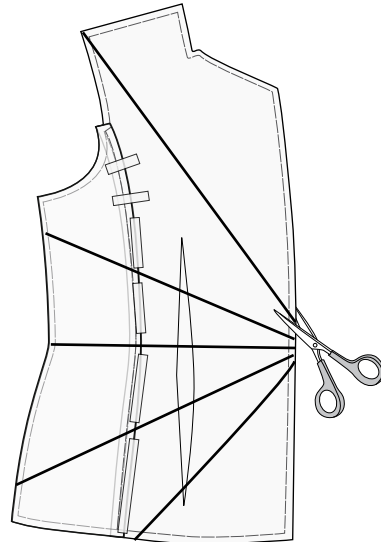
You can find these and many other accessories in the HUSQVARNA VIKING® Accessory User's Guide or on our website www.husqvarnaviking.com, for purchase at your nearest HUSQVARNA VIKING® Dealer.

Seam allowance: Refer to sewing instructions in the pattern.

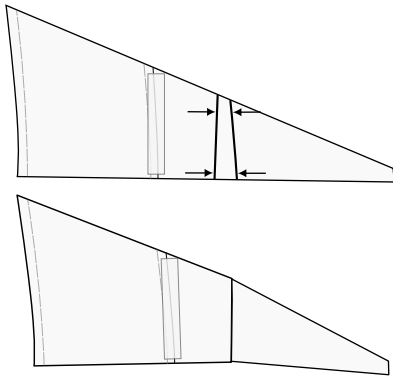
Cut out the Jacket pattern in the correct size.

Pattern changes for right front piece:

1. Place the front pattern pieces together, matching the seam line. Divide the front pattern pieces into 6 different pieces. Be sure to add 5/8" seam allowances to each cut edge of each piece.

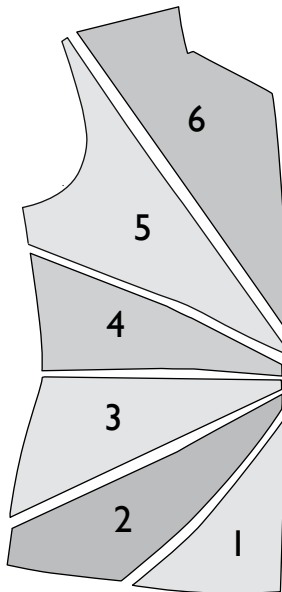


Note: The darts will not be sewn in the garment. Before cutting, fold the lines for the darts together and pin. Then draw the new pattern piece.



Cut

1. Cut all pieces in the blue silk fabric, except for the right front.
2. When cutting the right front piece, use the new pattern pieces you made.
3. Cut pieces 1, 3 and 5 from blue silk fabric.
4. Cut pieces 2, 4 and 6 from the three different textured fabrics. (We have used velvet for piece 2, thai silk for piece 4 and thai silk covered with organza for piece 6).

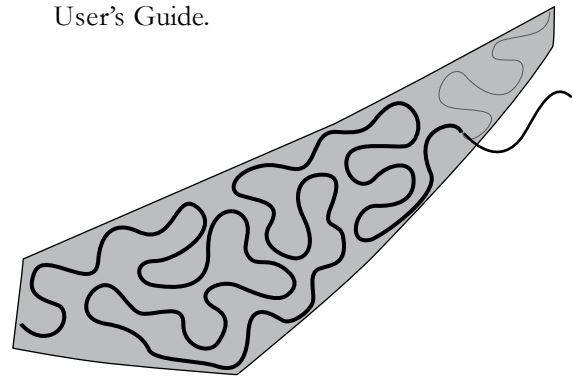


5. From the piping fabric cut on the bias:
 - 1 piece 20" x 1" (50 x 2,5 cm)
 - 2 pieces 16" x 1" (40 x 2,5 cm)
 - 2 pieces 14" x 1" (35 x 2,5 cm)
6. From the lining fabric: Cut the pieces for the jacket (see pattern instructions).

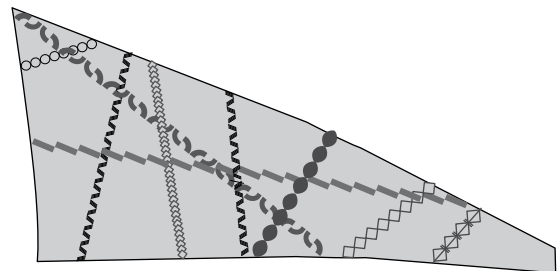
Embellish

We have embellished the three pieces as follows:

Piece 2: On the velvet fabric, embellish with the Gimping Foot. Place stabilizer underneath. Thread the SAPPHIRE™ sewing machine with 40 weight rayon thread on top and bobbin thread in the bobbin. With the Pictogram pen, mark a “puzzle piece” pattern on the fabric. Insert the gimping cord into the guide on the Gimping Foot and stitch on the marked lines. For instructions how to use the Gimping Foot see the Accessory User’s Guide.



Piece 4: Place stabilizer underneath. Sew different decorative stitches at various angles on the silk piece. To get a richer look, use a 30 weight rayon thread as the top thread.



We have used stitch numbers:

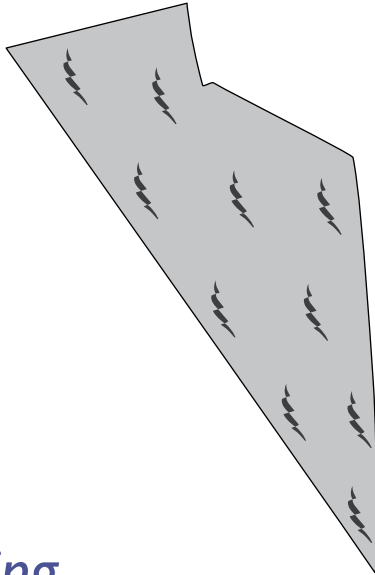
3:12, 3:14, 3:29, 3:33, 3:51, 4:51, 4:52, 4:53.



Piece 6: Make your own unique stitch by using the decorative Tapering feature on the SAPPHIRE™ sewing machine. Place stabilizer underneath. With 40 wt. rayon thread on top and bobbin thread in the bobbin. Choose stitch 3:20 program 2 stitches. Choose tapering before starting to sew. Taper the

stitch to the left 30° in the beginning and the end. For instructions see the User's Guide. Try your stitch first on a scrap piece of fabric.

Sew the stitch randomly over the piece.



Sewing

1. Make your own piping from blue fabric, using the Piping Foot. For instructions how to make piping, see the Accessory User's Guide.
2. Sew the jacket right front pieces together, sewing piping between all seams.
3. Follow the sewing instructions in the pattern to finish the jacket.
4. After finishing the jacket, use the Professional Touch Wand to hot fix Swarovski Crystals on piece 6.

Finished!