

# projects from the runway

brother®

project  
**RUNWAY™**  
projectrunway.com

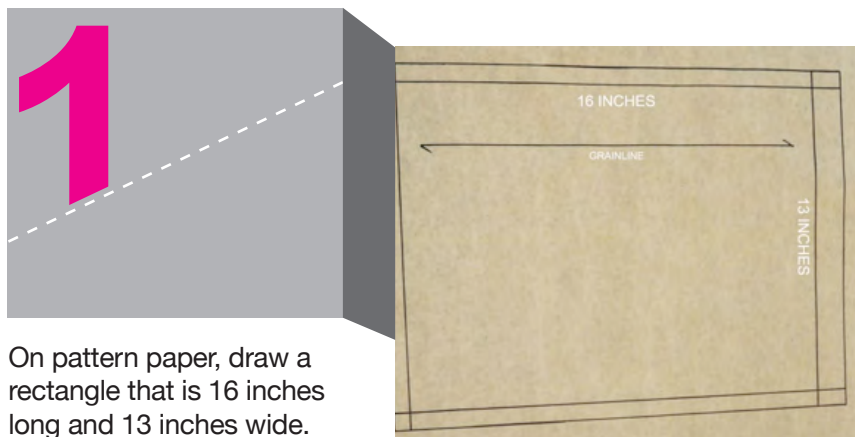


## Anthony Ryan Auld

### Inkblot Tote

If you're crazy about bags, then boy do I have the perfect project for you; my inkblot tote! The tote was created on the Brother™ Project Runway™ *Limited Edition* CE8080PRW Sewing Machine. The concept is from the Rorschach inkblot test, which was designed to test one's psychological state. The finished product will give the graphic and creative quality of the Rorschach inkblot test in a personalized bag for you or as a gift for someone else!

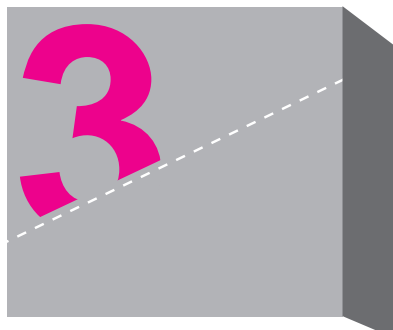
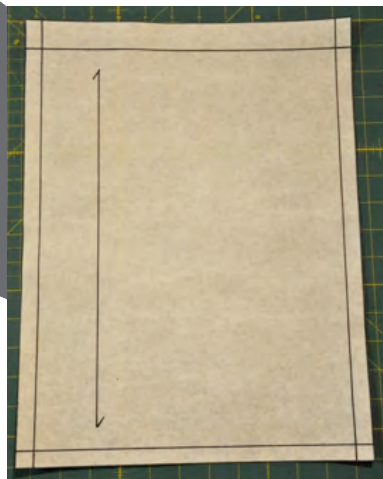
**MATERIALS:** Brother™ Project Runway™ *Limited Edition* Machine and instruction booklet, fashion fabric, lining fabric, fabric paint, paint brush, pattern paper, ruler, pencil, thick marker, tape measure, interfacing, 2- to 3-inch wide strap trim, fabric chalk, thread, scissors.



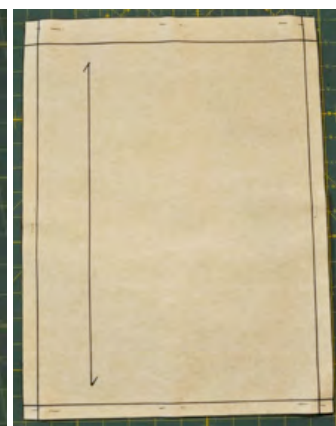
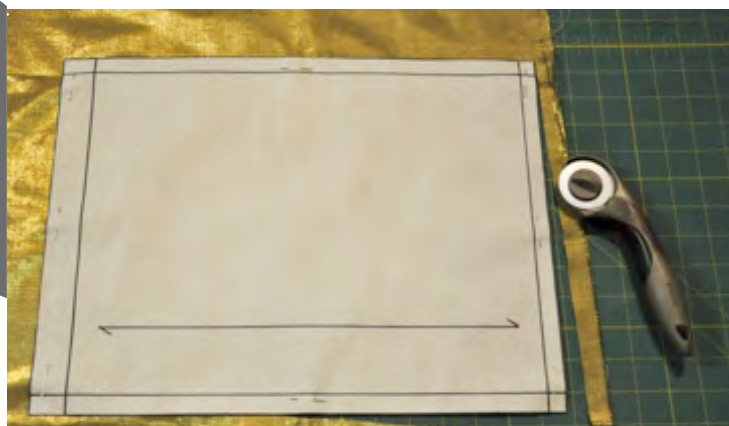
On pattern paper, draw a rectangle that is 16 inches long and 13 inches wide. Draw a line 1 inch from the top of the rectangle. Add  $\frac{1}{2}$  inch seam allowance on all sides, except for the top. Make sure to mark your grain line parallel with the longest side of the rectangle. You can choose to make a smaller or larger size to customize your own take on the project.



Cut from paper.



Place pattern on the fashion fabric, matching the grain line with the selvage of the fabric. Pin in place and cut from fabric. You should be left with two pieces that will serve as the front and back of your bag.

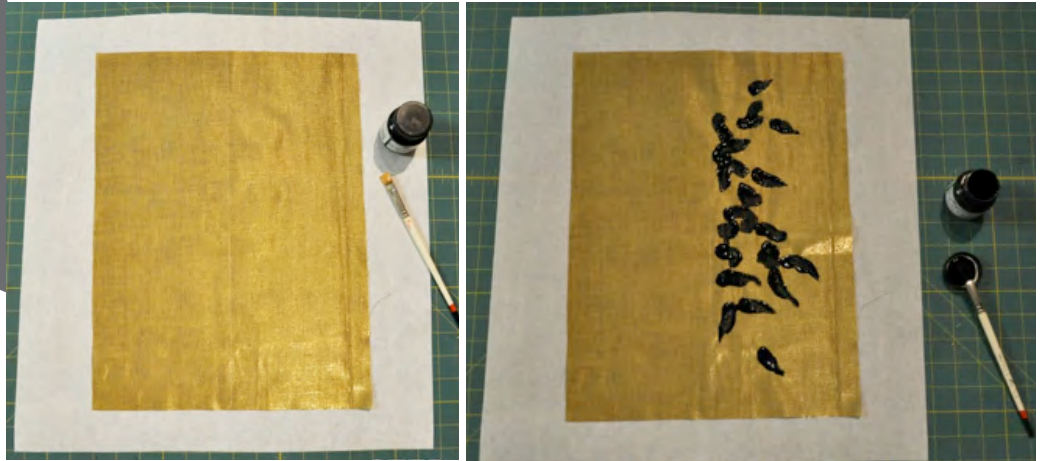


Using your fabric chalk, mark a line down the center of the fashion fabric that will serve as the front of your bag.



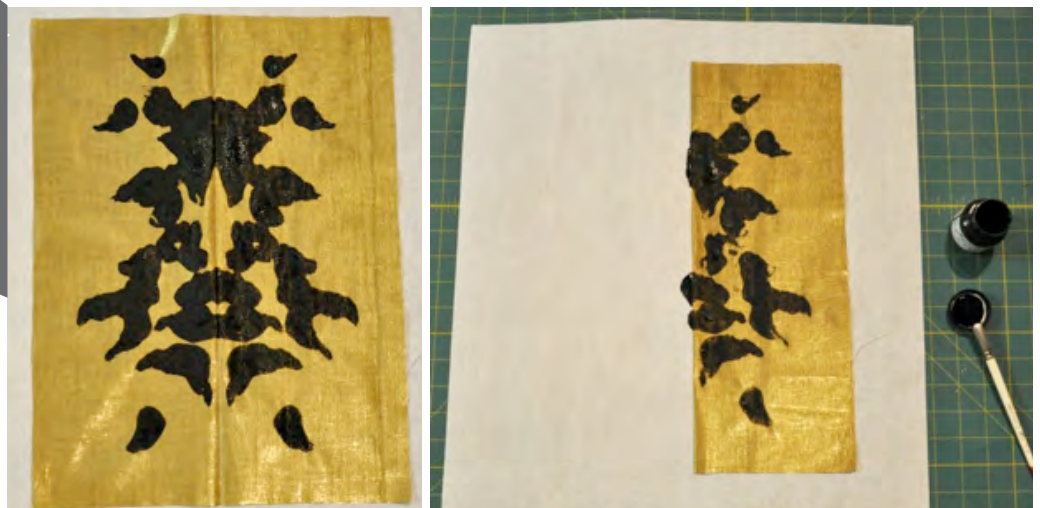


5

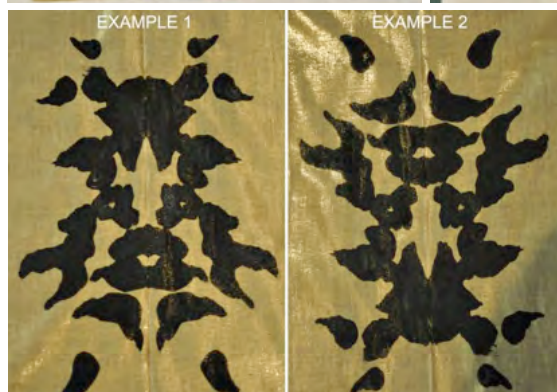


Place a piece of white butcher or pattern paper underneath the fabric rectangle. Using your fabric paint and brush, place thick, spots of paint to one side of the chalk line. Make sure you are placing the paint on thick in order to allow for the paint to bleed as it is pressed. Keep in mind the design you are preparing. The end result will be a mirrored print reminiscent of an inkblot test.

6



After you have placed your paint in the desired areas, fold the clean side of the fabric on the chalk line onto the fabric-painted side. Using a piece of scrap paper, smash the two sides of the fabrics together, making sure to smooth the fabric down from top to bottom and then side to side. This will remove all remaining globs of paint left and allow for maximum bleeding of the paint. Allow the fabric to dry for at least 25 hours.

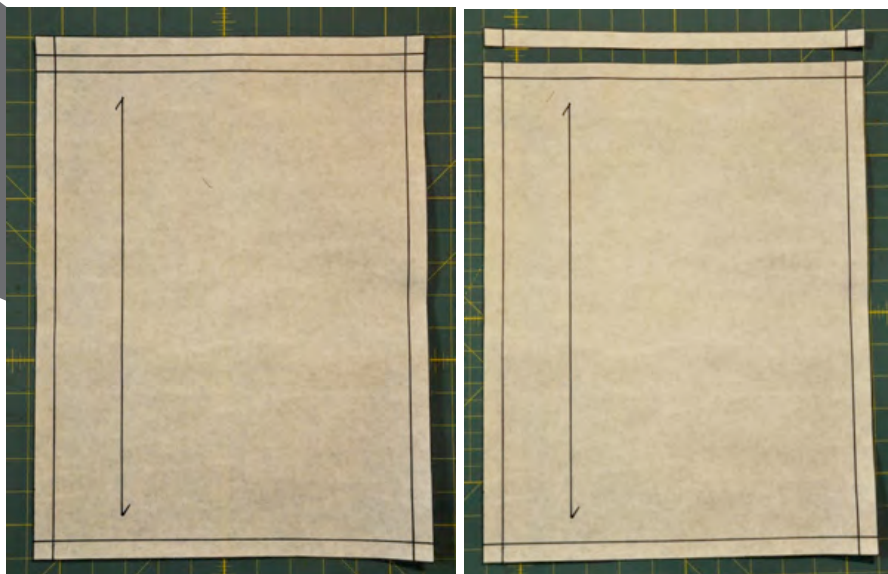






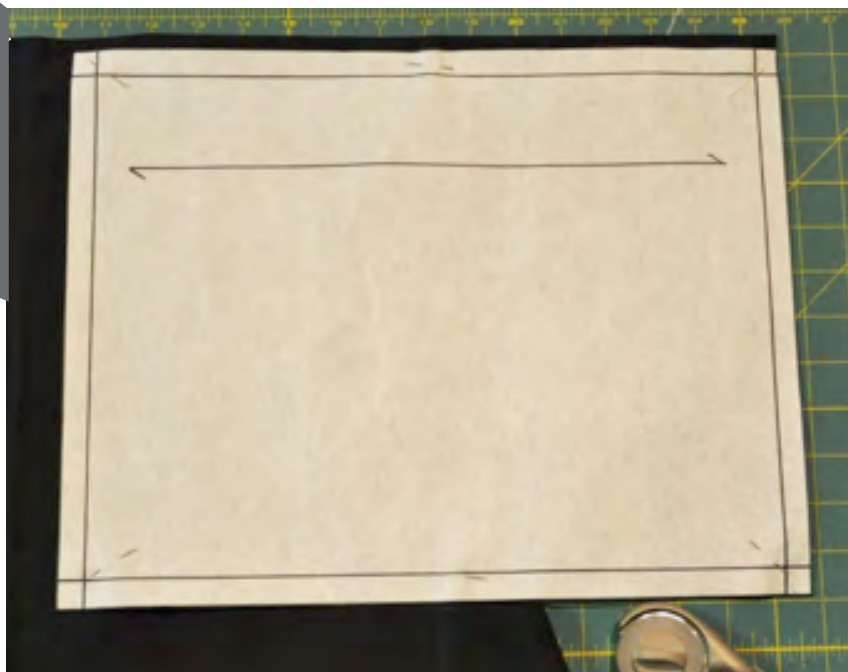
7

Next, take your pattern and mark a line  $\frac{1}{2}$  inch down from the top of the rectangle. Cut away from pattern and discard.



8

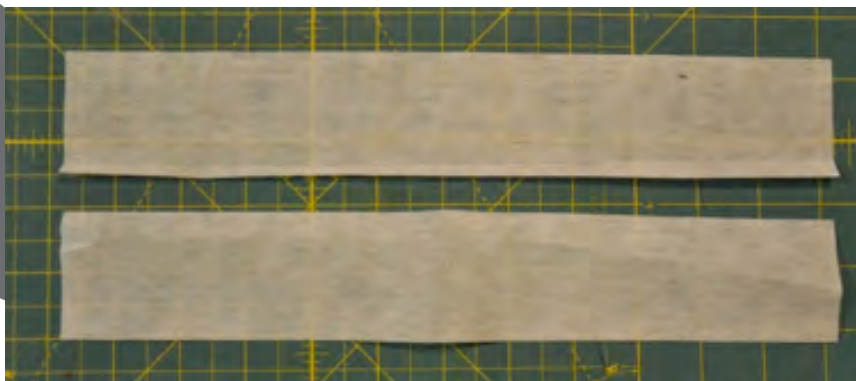
Place the new pattern on your lining fabric, matching the grain line with the selvage of the fabric. Pin in place and cut from fabric. You should be left with two pieces that will serve as the inside lining of the bag.





9

Now, cut 2 pieces of fusible interfacing, 2 inches wide by 13 inches long. Place on the wrong sides of your fashion fabric, 1/2 inch down from the top of the bag. Using a hot iron, press until interfacing is securely fastened to the fashion fabric.



10

Take your fashion fabric and pin with the right sides together. Using your Brother sewing machine with the stitching length set fairly tight (2.5), stitch the front and back of your bag together.





# 10

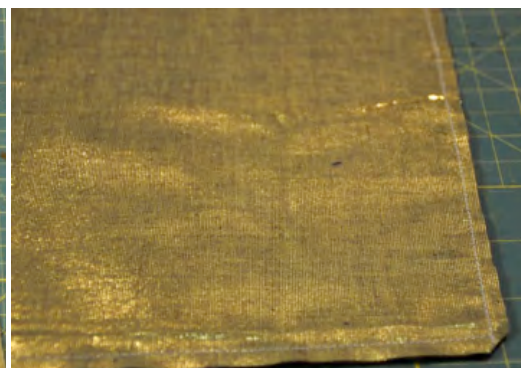
continued

You will need to pivot at the bottom corners, creating two 90 degree angles at the bottom of the bag.



# 11

Press seams open and cut away half of the seam allowance. At the corners of the bag where the 90 degree angles were created, cut away at an angle to remove even more seam allowance. This will allow for a sharper point, as the bag is turned inside out.



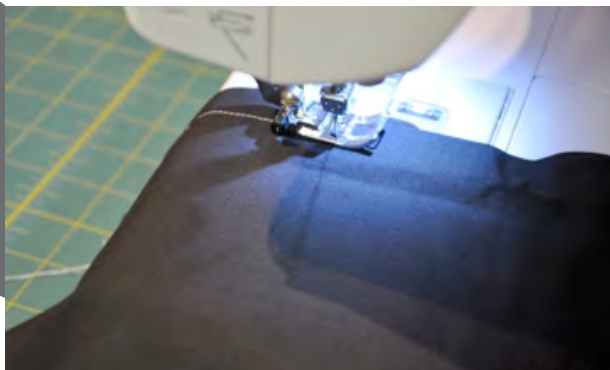




Turn the finished product from step 11 to its right sides. Using a point turner, press out the points at the 90 degree angles created at the bottom of the bag. Press all sides of the bag sharply and at the corners created.



Next, pin together the right sides of your lining fabric with the wrong sides facing out. Using your Brother™ sewing machine, stitch the front and back of your lining fabric together, making sure you are pivoting at the 90 degree angles as you did in Step 10.





# 14

Repeat Step 11 to the lining fabric.



# 15

Now, with your lining turned inside out, place your fashion fabric into your lining fabric. The right sides of both fabrics should be touching. The only visible fabric you should see is the wrong side of both. Pin together at the top of the bag. Sew the top of these two products together. You will need to leave a 2-inch opening that will allow you to turn the bag back inside out.

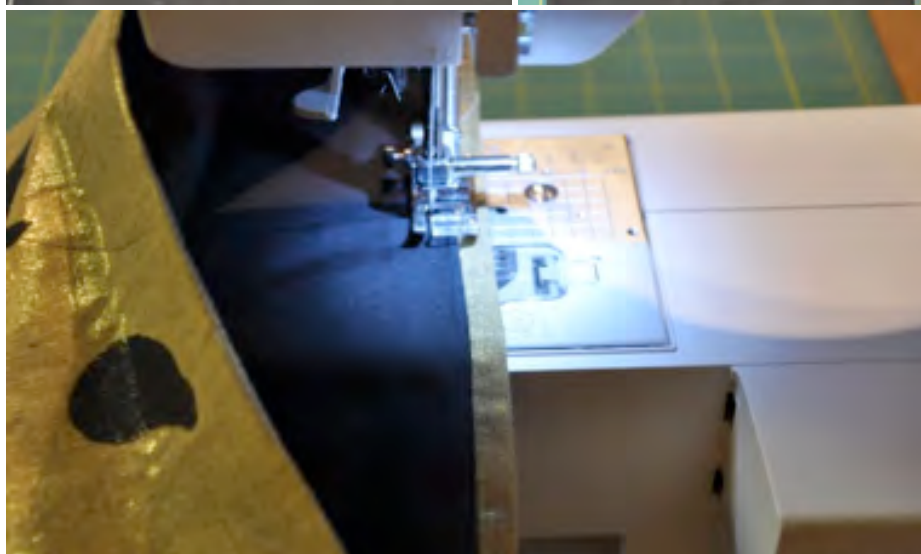






# 16

Through the 2-inch opening, turn the bag back with its right sides out. It may take a little finessing, but it can be done. After you have done so, press the lining at the top of the bag  $\frac{1}{2}$  inch down from the top of the bag. Next, top stitch  $\frac{5}{8}$  inches down from the top of the bag. This will not only reinforce the top of the bag but also make sure the lining does not ride out the top of the bag.



# 17

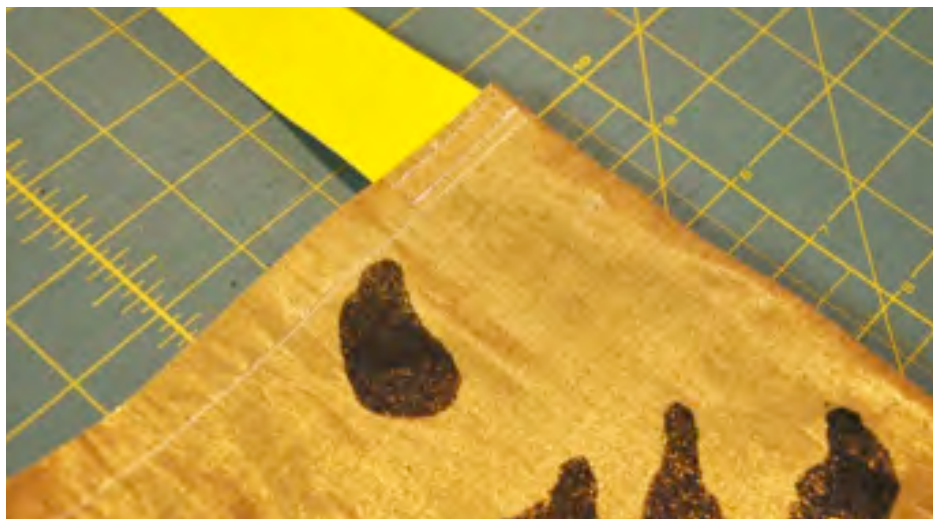
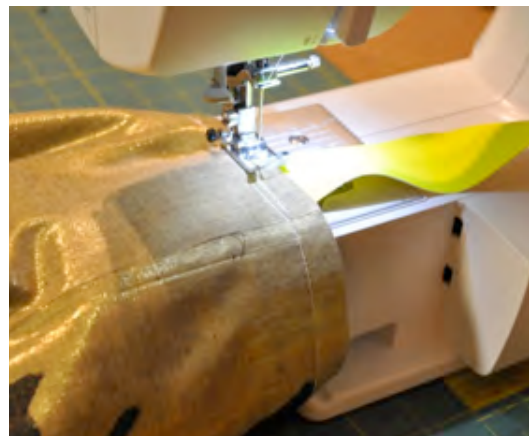
The top of the bag should look like this.





# 18

Using your tape measure, determine how long you would like your strap to be. I have decided to do a cross-body bag and have determined a length of 55 inches. This may vary, depending on your height or where you would like the bag to hit on the body. You could also do a two-strap bag, in which case you would measure over the shoulder and determine where you would like the bag to hit under your arm. After you have decided what strap option you would like, cut the length from the 2- to 3-inch trim you have chosen for the strap. Make sure it is very durable, because this is the most used portion of the bag. Change the stitch setting on your Brother™ machine to the reinforcing stitch (setting 10 in your instruction booklet).





18

continued

With the front of your bag facing you, place the strap  $\frac{3}{4}$  inches inside the top right (as opposed to left) side of the bag. Pin in place and stitch two reinforced stitches between the top of the bag and the top stitch that was created in Step 16. Now, turn the bag around to the back and place the strap  $\frac{3}{4}$  inches inside the top right (as opposed to left) side of the bag. Pin in place and stitch two reinforced stitches between the top of the bag and the top stitch that was created in step 16. Press the entire bag firmly with a hot iron.

Now you have a great custom tote to keep for yourself or share with a friend! Be creative with it. For instance, I have used reflector tape for the strap on my bag for those dark nights out when I want to make a statement. Regardless of how big or small or flashy or simple you prefer, the bag should be a reflection of your own personal style or whom you have created it for. This project with Brother™ is an easy way to get a feel of your new machine while showing your audience the *Project Runway* designer in you!



(This project was created from the designer's perspective.)

done