

projects from the runway

brother®

project
RUNWAY™
projectrunway.com



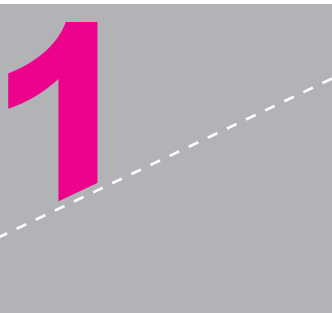
Anthony Ryan Auld

Gets in the Holiday Spirit with His Customized Stocking

It's that time of year again and I am sure many of you are wondering: "What should I get the sewing enthusiast on my list?" If many of you have relatives who love sewing and crafting, the Brother™ Project Runway™ *Limited Edition* CE8080PRW Sewing Machine is the perfect gift for any beginner, intermediate and even expert designer.

The Brother™ Project Runway™ *Limited Edition* Sewing Machine is by far the "gift that keeps on giving" and with that holiday spirit!

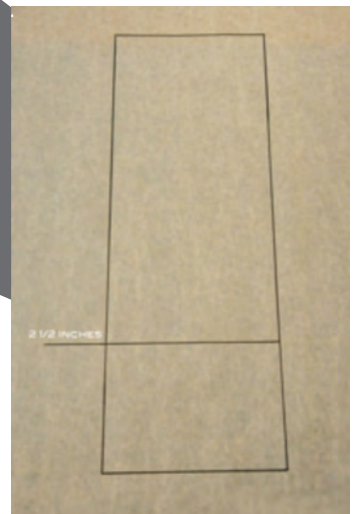
MATERIALS: Brother™ Project Runway™ *Limited Edition* Sewing Machine and Instruction Manual, paper and fabric scissors, pencil, thick marker, ruler, fabric, tape, pattern paper, thread, ½ inch trim.

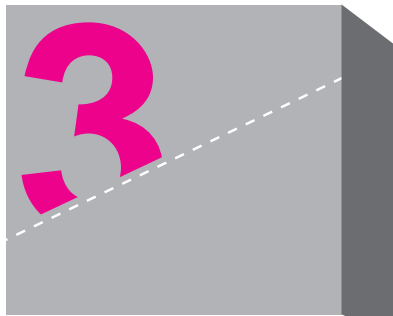


Draw a rectangle with a height of 20 inches and a width of 7 inches. Next, measure down 15 inches and square a line across the box, dividing it into two halves.

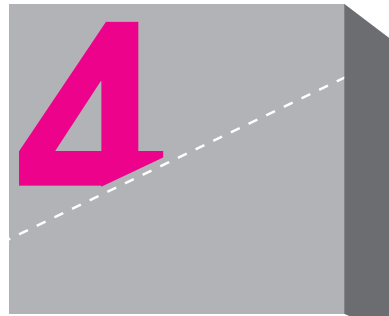
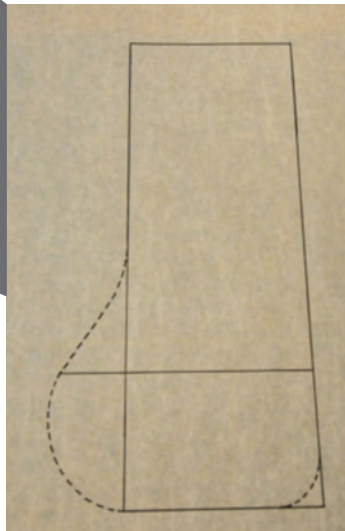


Extend the dividing line 2-½ inches out from the box.

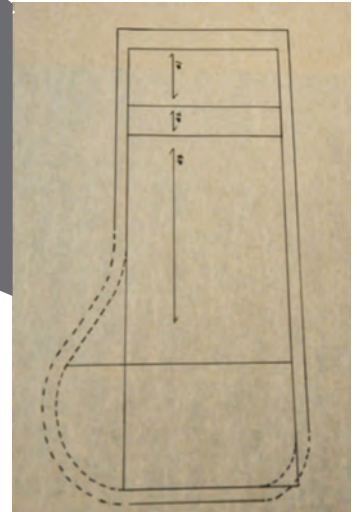




Create a stylist curve from the box to the 2-½ inch mark that curves back into the base of the box. Next, curve the 90-degree angle that makes up the opposing side of the box.



Draw a line 3 inches down from the top of the stocking design. Label this box "1". Next, draw a second line 4-½ inches down from the top of the design. Label this box "2".

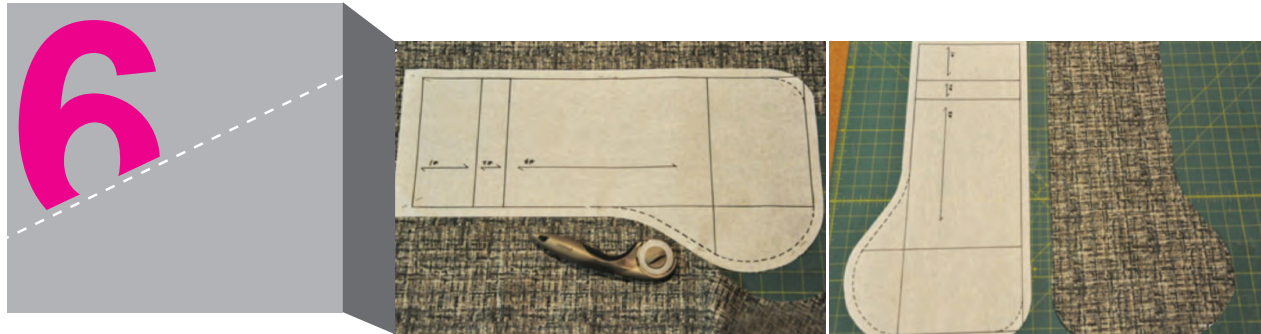


The remaining bottom portion of the stocking, label "3". These lines are design elements and are optional, depending on how you want to create your stocking. Finally, add ½ inch seam allowances to all sides of the finished design, except for the top of the stocking in which you will need 1 inch. Mark your grain line parallel with the height line.



Cut your pattern from the paper, making sure to include seam allowances.

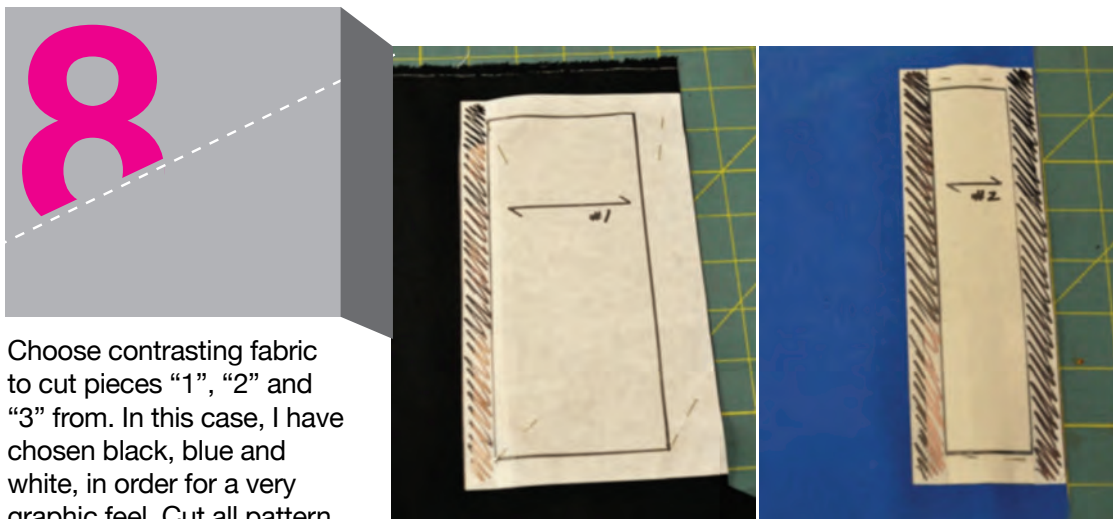




Place your pattern piece on a fabric of your choice that will serve as the back of the stocking. In this case, I am using a fun pattern! Line up your grain line with the selvage of the fabric and pin in place. Cut from fabric. You should be left with two cut fabric pieces that are opposite when placed with the right-side up. Discard the top piece (or use for a second stocking).

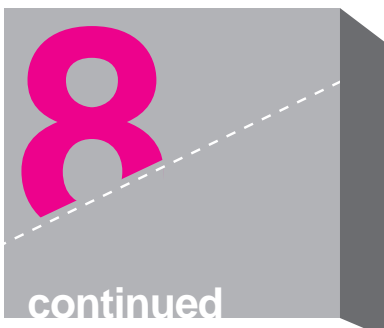


Separate the style lines created at the top of the fabric. Next, add 1/2 inch seam allowance to each cut side as seen in black. You can do this with extra white paper and a little bit of tape. You will be left with three pattern pieces.

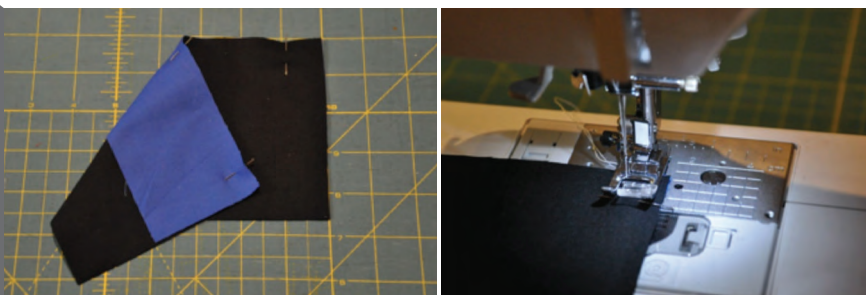
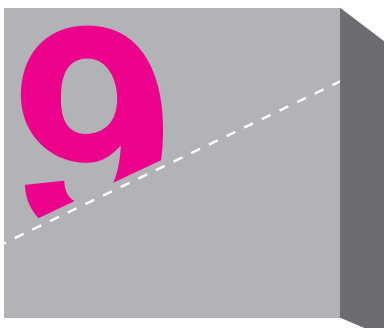


Choose contrasting fabric to cut pieces "1", "2" and "3" from. In this case, I have chosen black, blue and white, in order for a very graphic feel. Cut all pattern pieces from desired fabric, making sure that all grain line marks match up with the selvage of the fabric.

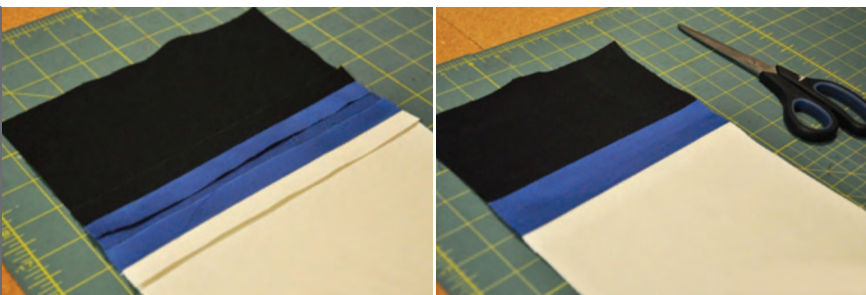
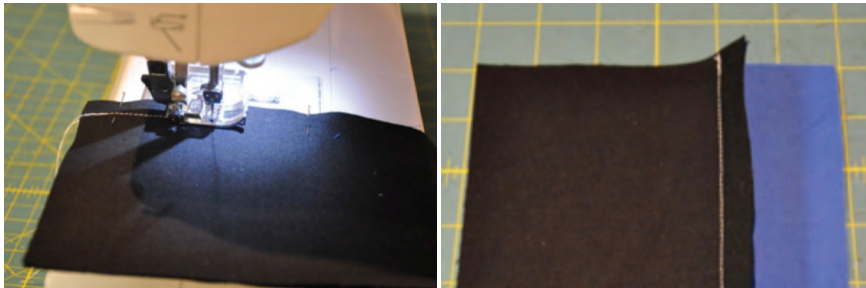
(Continued on next page)



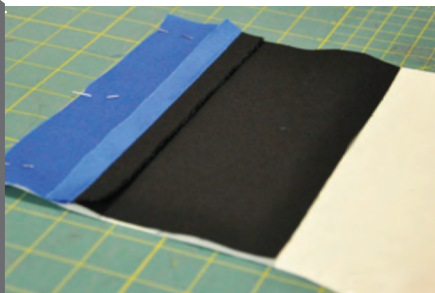
You should be left with 6 cut pieces. Discard the bottom pieces (or use for second stocking). You will now be left with a total of 4 pattern pieces.



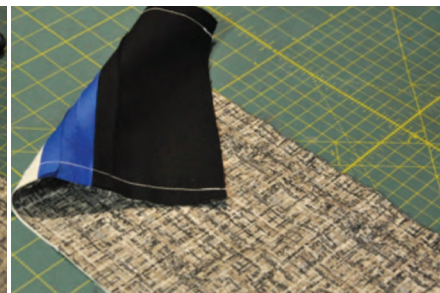
With right sides together, pin pieces "1" and "2" at joining seam. Sew together and press open with hot iron.



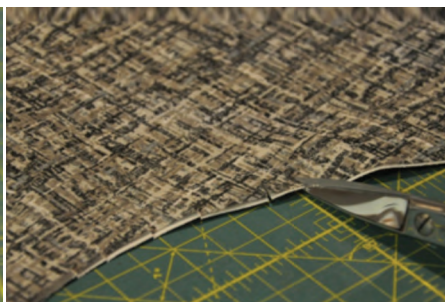
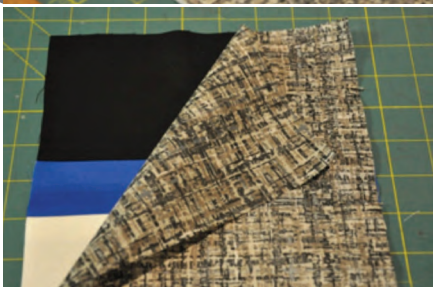
With right sides together, pin pieces "2" and "3" at joining seam. Sew together and press open with hot iron.
(Continued on next page)



You should be left with three contrasting fabrics that make up the silhouette of your stocking.



With right sides together, take the front side of your stocking sewn from steps 9 and 10 and the back of your stocking, and pin together at joining seams. Sew together and press open.



Clip all curves of your stocking, making sure not to go past the stitching line. After doing so, trim half of the excess fabric from your seam allowances.



13

Turn stocking right side out and press sharply.



14

Sew a stay stitch $\frac{1}{2}$ inch from the top of your stocking. Next, fold under $\frac{1}{2}$ inch on the stay stitch line and press. Next, fold another $\frac{1}{2}$ inch under, encasing the first half inch into the second half inch. The top of your stocking should now be clean finished. Top stitch $\frac{1}{2}$ inch from the top portion of your stocking. I am stitching three equal rows of top stitching for decorative purposes. This is optional.





15

With a trim of your choice, measure 3 inches and cut. Pin both sides together and pin 1/2 inch into the inner edge of your stocking. Sew a 45-degree angle from the edges of your stocking, creating a reinforced triangle. You may want to double back for extra support.



16

Press your stocking crisply and fill with presents!



(This project was created from the designer's perspective.)

done