

projects from the runway

brother®

project
RUNWAY
©2012 Brother International Corporation. All Rights Reserved. projectrunway.com



Christopher Palu

Canvas & Leather Bag

Today, I will be making “The Perfect Beach Tote” for those of you who go on vacation during this time and need a tote bag. For those of you who miss the summer and want to make a fun bag for the upcoming summer, this is the perfect tote! Why? Because it is oversized and includes leather straps, and is able to carry a lot of things.

MATERIALS: (1) yard of canvas measuring 35" in height x 54" in width, (2) 2" strips of leather measuring 54" each, (for the straps), (1) strip of leather measuring 1.5" x 23", (1) roll of double stick tape

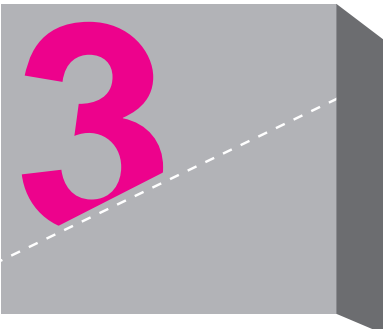
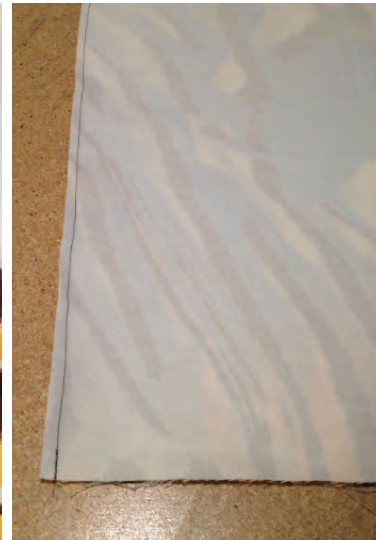


Take the canvas and fold it on the length, keeping the width of 35" with the print facing in so it measures 35" x 25". Cut from the bottom so the new size is 35" (on the fold) x 23" (sides).





Sew down both sides with 1/4" seam allowance.



Turn inside out and press the seam.



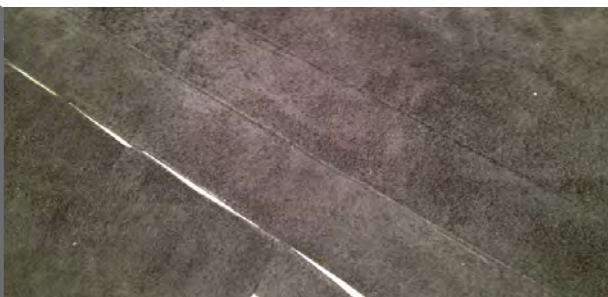


For the open end, press with seam allowance in so we can top stitch clean.



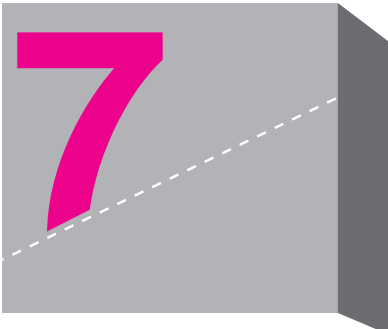
Take the leather and cut out 3 strips: 2 measuring 2" x 54" for the 2 straps and 1 measuring 1.5" x 23" for the bottom piece. Position the straps of leather on the canvas with roughly 6" of canvas between each strap.

Tip: I used little pieces of double stick tape to keep them in place.

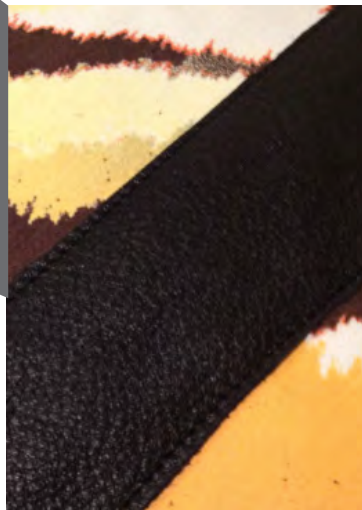


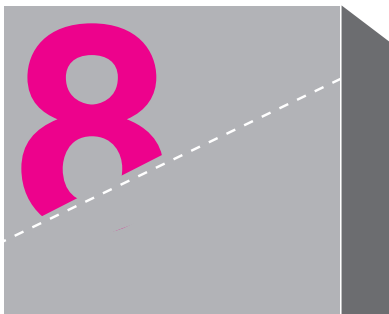


Sew the straps down like so.



Edge stitch the entire strap and when you get to the handle, mirror the other side of straps touching, and stitch down as we just did on the first side.





Measuring evenly, place the third strap of leather over both straps using the double stick tape and sew down.

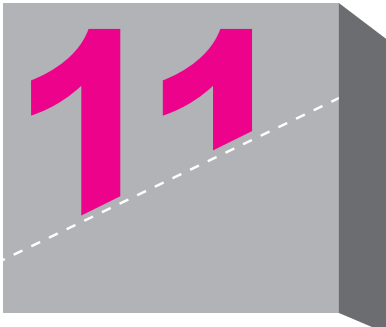


Take the handles and put some double stick tape on the edges like so and sew down, giving you a more professional and comfortable handle.





Turn the bag inside out, match up the sides and stitch the side seams, leaving 1/4" seam allowance.



We are now working on the bottom corners. Take the corners, position like so, drawing a 2" line from the corner and stitch down.





12

Cut off the corner, leaving 1/4" seam allowance. Do this to both sides.



13

Turn the bag right side out and you are now finished! Congratulations on your new tote and have a fabulous time at the beach! Hope you had fun!



(This project was created from the designer's perspective.)

done