

Woodland Wonder

Designed by Lynn Bérubé
this heart-warming ted will
make a delightful addition to
any hug

Chestnut is the perfect companion to cuddle up to on a cold

Autumn night. His sculptured face and inset eyes add to his traditional charm. Created from distressed brown mohair this cuddly ted is fully posable and looks stunning sitting or standing. When complete Chestnut stands at 33cm (13") tall and will complement any collection. With a little care and patience this bruin is simple enough for a beginner to make. So why not dig out your sewing box today?

You Will Need

- 1/4 metre short pile mohair
- Felt or ultrasuede for paws and pads
- Black perle cotton
- Extra strong thread
- 9mm black glass eyes
- Two 45mm cotter pin hardboard joints for the arms
- Two 50mm cotter pin hardboard joints for the legs
- One 50mm cotter pin hardboard joint for the neck
- Polyester filling
- Stuffing tool

Step by Step

1 Begin by tracing the pattern pieces onto thin card and cut out the templates. Ensure that you transfer the directional arrows, joint positions and openings. Remember to cut out the reverse templates. Place your templates on the reverse side of your chosen fabric, and trace. Ensure that you position the arrows on the pattern pieces in line with the pile direction. Mark the joint positions and openings as required. Trace the paws and foot pads onto the felt or ultrasuede. Cut out the pattern pieces using small sharp pointed scissors, taking care to avoid the pile. When finished, trim .5cm (1/4") of mohair around the edge of all your pattern pieces, this will give a neater sewing seam.

2 Pin your pattern pieces together. Start with the two head pieces and pin from





care as the nose and the foot pads are the most difficult pieces to sew. Next pin the right body piece to the left and pin together the corresponding inner arms and outer arms. Pin the foot pads to the legs. Sew them together and turn the pieces inside out.

5 Run your finger on the reverse of the seams to check that they are smooth. Push the seams out with your fingers and

paying particular attention to the nose and pad areas. Once this task is complete you are ready to stuff your ted. You can purchase a stuffing tool from a fabric shop or alternatively you could use the handle of a wooden cooking spoon. Use small pieces of filling at a time to avoid creating hard lumps or hollows. Be prepared to spend a considerable amount of time on this task. Don't despair if you have to pull out some stuffing and start all over again.

Stuff the arms by using small pieces of filling and your chosen stuffing tool. Push the filling into the bottom of the limb, and follow with your stuffing tool. You will need to stuff the pads so that they are firm and smooth. Stuff up to 5cm (2") from the top of the arm insert the cotter pin joint. Use a knitting needle and part the weave in the fabric at the joint position, prior to inserting the cotter pin. This prevents breaking any fabric strands which can weaken the fabric. With the joint in

place finish stuffing to the top and close with ladder stitch. Repeat this procedure for the remaining limbs.

6 Next stuff the head. This is likely to prove your biggest challenge. Not only will you have to avoid making any lumps and hollows, you must also ensure that it remains symmetrical. Pay extra care with the tip of the nose and the forehead seams. Fill up to 1.5cm (1/2") below the neck opening and insert the neck joint. With a generous length of extra strong thread, gather the neck with a large running stitch, tie and secure. Sew the ears using ladder stitch. I tend to pin the ears on prior to sewing, this lets me experiment with their position and helps to keep them even.

7 Trim the mohair down to the fabric under the intended nose area. I usually pin various different shaped templates on to the nose before I decide upon a specific style. Glue your chosen template in place and embroider over the top.

8 The size and positioning of the eyes can dramatically change the look of your bruin. Be daring and experiment. Once you have chosen Chestnut's eyes thread a 5" needle with a double strand of extra strong thread. Insert the needle at the position you have marked for the eye. Run the needle through the head and exit at the back, near the base of the neck. Pull the needle completely out, leaving the thread behind. You should be left with 25.5cm (10") of thread protruding at the front of the head and 12.5cm (5") at the base of the neck.

Next thread the eye loop with the thread at the front of the

head followed by the 5" needle. Re-insert the needle in the first entry hole, run through and exit about .5cm (1/4") away from your previous exit point. Pull the needle out and set it aside. You will now be able to place the eye into position by pulling the thread from both exit points. Repeat this procedure for the other eye. Pull both eyes into position, ensuring they are even and the same depth. Once you are satisfied with their appearance secure them with a reef knot.

9 Now you are ready to assemble your bear. Use a knitting needle to part the fabric weave at the location marked for the right leg. Push the right cotter pin through the hole you've just made. Follow with the correct-sized joint disc and metal washer. With a pair of needle nose pliers, grab hold of the longer cotter pin half. Try to grab the pin with the very tip of the pliers. Twist the cotter pin until the fabric is pinched together between the disc joints. Once you have finished twisting one side of the cotter pin repeat this process with the other side. Next grab and pull the fabric from around the joint. This should free up any fabric, which may be folded or wrinkled underneath the disc joint. Tighten the joint and adjust the tension, by twisting the cotterpin further, as necessary. Repeat this procedure for the remaining limbs and head. To complete Chestnut stuff his body and close with ladder stitch.

point A to B. Next pin the inner arms to the paw pads, ensuring that you match the right arm to its corresponding pad and do the same with the left. Pin the right front body piece to the right back body and then the left front body to the left back body. Fold the right leg in half and pin from the tip of the toe up to the opening mark at the top of the leg. Repeat this process for the left leg. Next pin the ears pieces together.

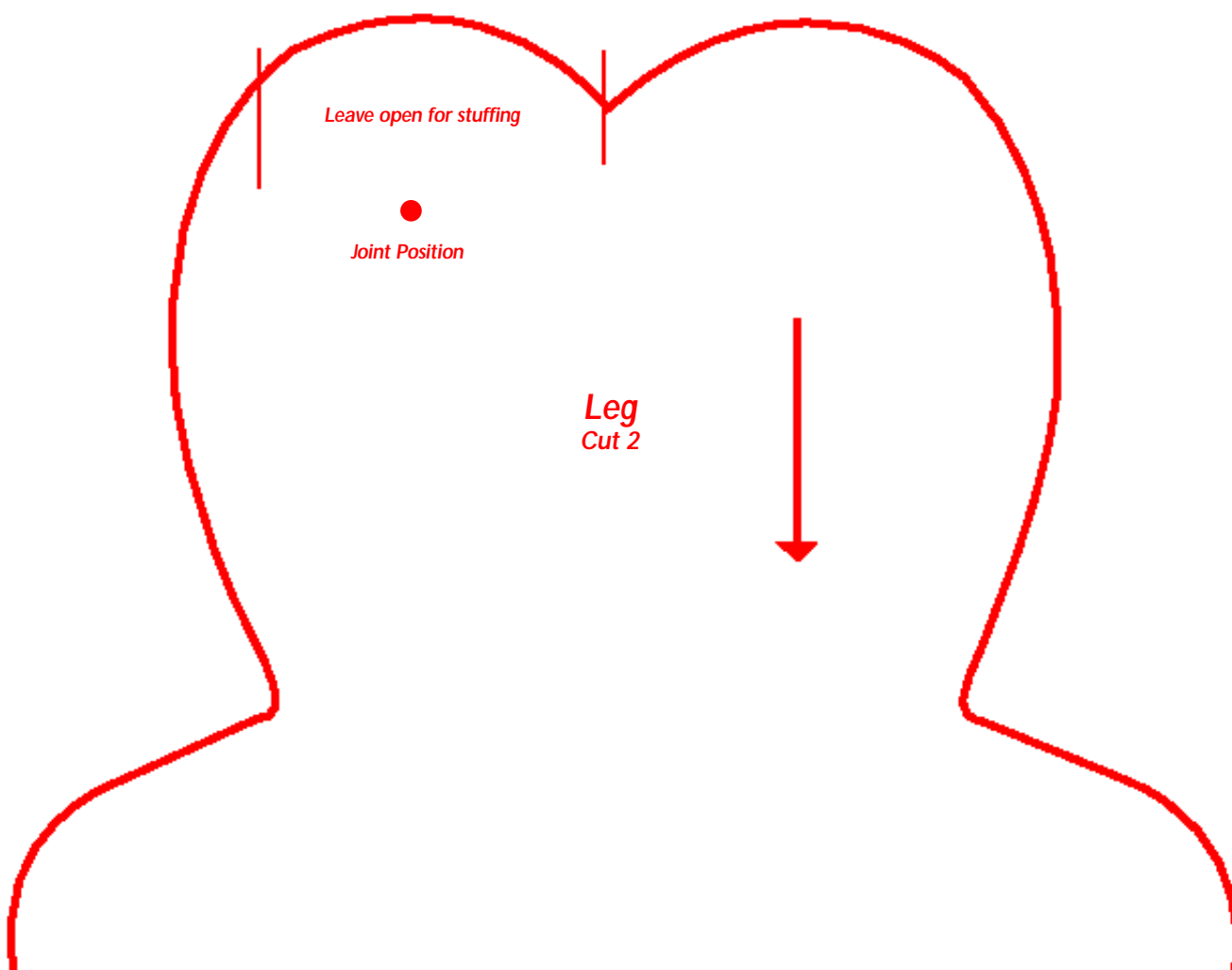
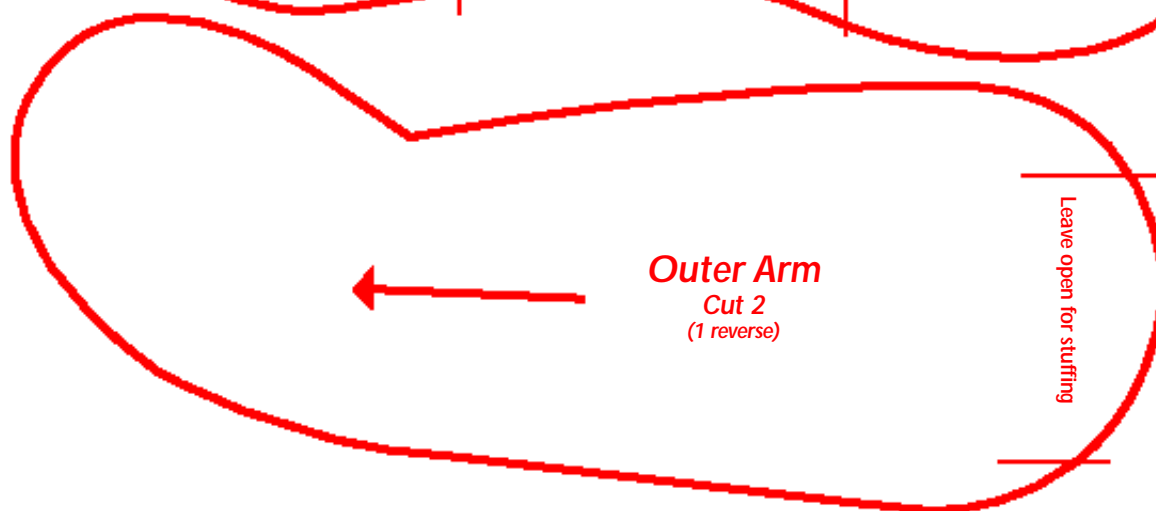
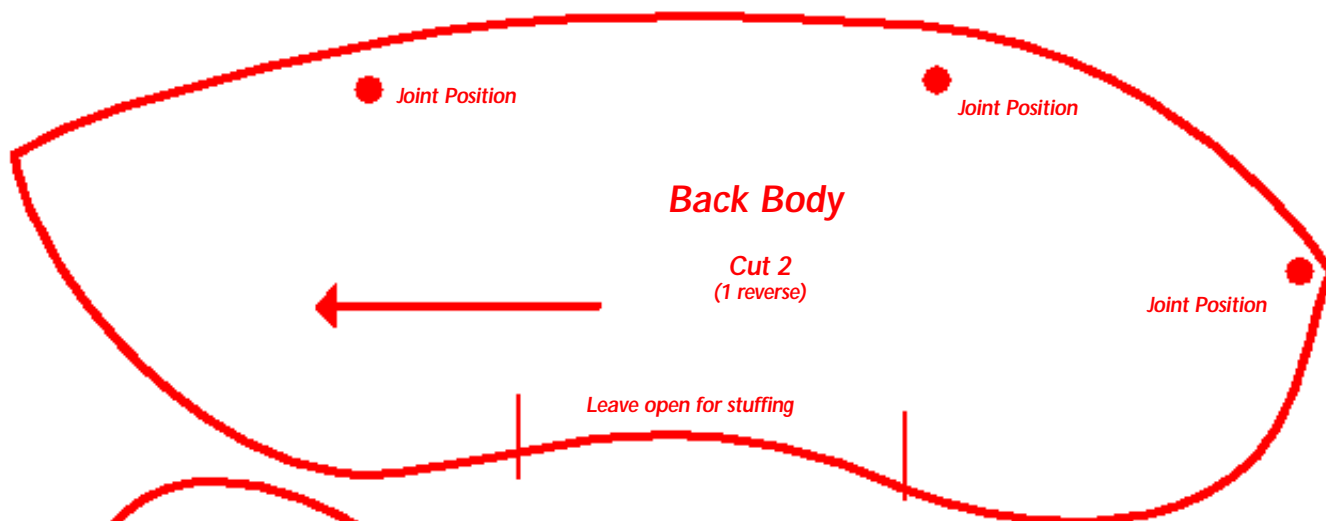
3 Sew all of the pinned pattern pieces together leaving a .5cm (1/4") seam allowance. Ensure to leave an opening where required. I always use a fine machine stitch and double stitch each seam to give added strength. If your sewing is a bit rusty, or you're in need of practice, try sewing scrap pieces of fabric together first.

4 Pin the head gusset into the head pieces. Begin at the tip of the nose and work to the back of the head as you go. Take extra



Bear Facts

● If you'd like to know more about Bérubears call 01842 828 452.



Your Templates
Enlarge by 120%

