

*Embroider
&
Shine
Pillow*



The specially designed "Embroider & Shine" collection is made of 5 units in various shapes to give you unlimited variety! You can find them, plus 3 ready-made combinations, as free downloads at husqvarnaviking.com/shine.

You need:

- HUSQVARNA VIKING® sewing and embroidery machine
- HUSQVARNA VIKING® Embroider & Shine designs
- Clear Invisible Zipper Foot #413286545
- Single Welt Cord Foot #412627045
- Inspira Light & Tacky stabilizer #620115396
- White velvet fabric 38x42cm (½ yard)
- Silk fabric 50cm, 110cm wide (1 yard)
- Cotton fabric 13x42cm (¼ yard)
- Contrasting silk for piping 30cm, 110cm wide
- 6mm Cord for welting 2.30m (2½ yards)
- Invisible Zipper 60cm (24") long matching the silk fabric on the back of the pillow
- Embroidery thread of your choice. We used Robison Anton Rayon 40: 2224, 2296, 2331, 2380, 2430, 2521, 2582

Cut:

Velvet fabric 42x38cm (16 ½" x 15")

Silk fabric 42x13cm (16 ½" x 5")

Silk fabric for pillow back 1 piece 9x74cm (3½" x 29"), 1 piece 35x74cm (14" x 29")

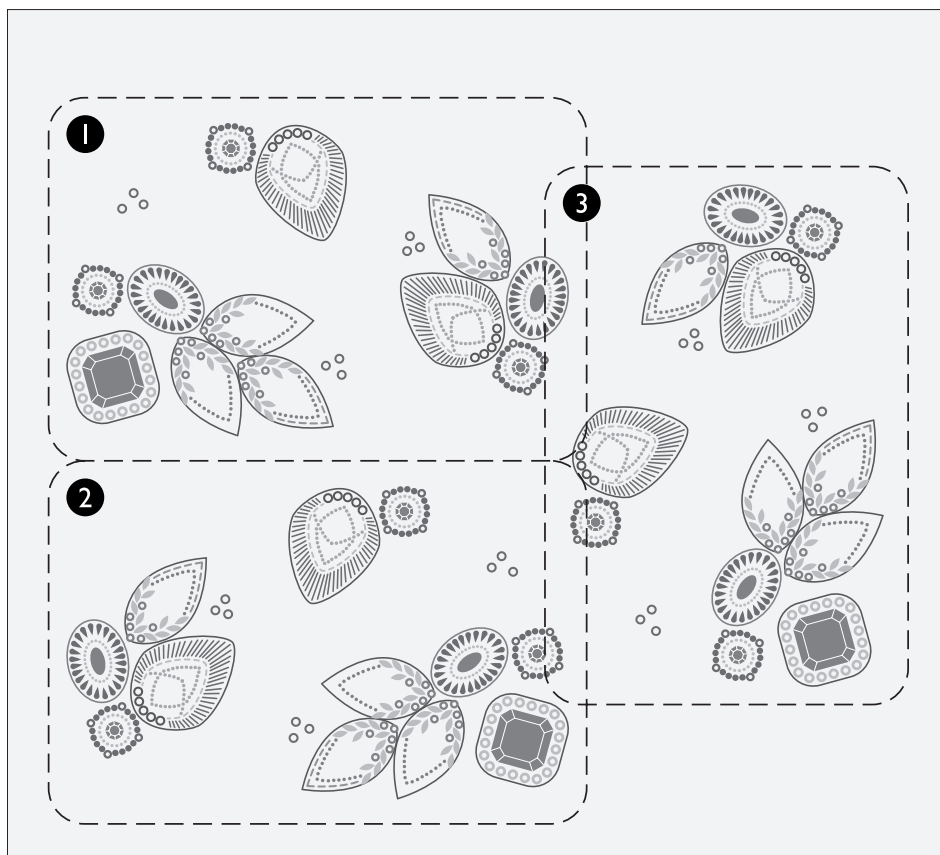
Contrasting Silk: Cut enough 5cm (2") wide pieces on the bias to cover the 2.30m (2 ½ yards) cord.

Cotton fabric 42x13cm (16 ½" x 5")

Use a regular Zig-Zag stitch to cover all the raw edges on all cut pieces before you start to sew.

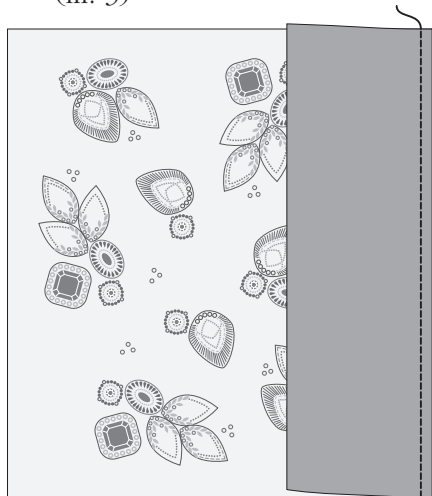
Embroider:

1. Hoop the stabilizer in the HUSQVARNA VIKING® Large Embroidery Hoop 240x150mm (9.6" x 6") with the sticky side up.
2. Place the velvet on the stabilizer as shown on illustration. This stabilizer is perfect for materials that you do not want to hoop because it might leave marks on it. Place the velvet on top, making sure it sticks to the stabilizer.
3. Embroider the design combination three times on the velvet fabric (as shown in ill. 1). No.1 is the original embroidery, No.2 is mirrored vertically, no.3 is rotated 180 degrees.
4. Embroider the design. Re-hoop three times (as shown in ill.1)

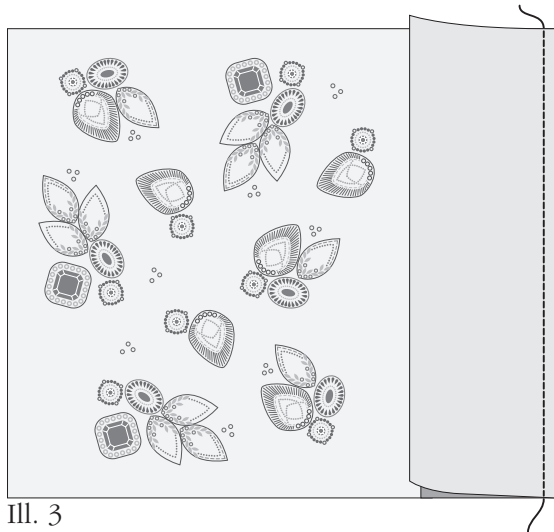


Sew:

1. Place the edge of the velvet and the silk right sides together and sew the long edge with a straight stitch, 1cm ($\frac{5}{8}$ "") seam allowance. (ill. 2)
2. Add the cotton next to the silk in the same way (ill. 3)



Ill. 2



Ill. 3



Ill. Finished front

Back piece with invisible zipper:

The seam allowance is 1cm ($\frac{5}{8}$ "")

1. An invisible zipper is always inserted before stitching the garment seam.
2. Mark the length of the zipper opening on the seam allowances and on the zipper. The excess length should be at the bottom of the zipper.
3. Snap on the Clear Invisible Zipper Foot
4. Select center needle position straight stitch. Length 2.5-3.0.
5. Place the right part of the zipper on the right side of the seam, right sides together. The coil should be placed on the seam line, starting about 2cm ($\frac{3}{4}$ "") below the cut edge of the fabric.
6. Carefully press the zipper teeth slightly to the right and lower the presser foot, so that the coil lies in the groove to the right of the needle.
7. Starting at the top, sew the zipper in place. Stop at the mark on the zipper and seam allowance and tie-off.
8. Place the second zipper tape on the left side of the opening, right sides together. Make sure both coils are level.
9. Pin the zipper in place. Open the zipper.
10. Lower the presser foot with the left groove over the zipper teeth. Sew in the same way as the first guide.
11. Close the zipper. Place the fabric with the zipper right sides together. Pin the rest of the fabric below the zipper right sides together.
12. Snap on the regular Zipper Foot E to the left of the needle. Adjust the needle position as needed.
13. Sew the seam from the lower edge and up to the zipper overlapping the backstitched seam.
14. Press the seam open

Note: Buy an invisible zipper that is at least 3cm ($1\frac{1}{4}$ "") longer than the zipper opening.

A clip on how to sew with the clear Invisible zipper foot and several other accessories can be found on husqvarnaviking.com

Welting:

Sew the strips of silk for the welting together to create a long strip.

To cover welt cording:

1. Use 6mm (¼") Cotton Filler Cord. Cut strips of bias or cross grain fabric wide enough to cover the cord plus seam allowance.
2. Snap on the Single Welt Cord Foot. Select center needle straight stitch, stitch length 3.
3. Place the cording on the wrong side of the fabric strip and wrap the fabric strip around the cord.
4. Place the fabric and cord under the Single Welt Cord Foot with the cording in the groove on the underside of the foot.
5. Sew to cover the cording with the fabric.

To stitch covered welt cord into a seam :

1. Snap on the Single Welt Cord Foot. Select center needle position straight stitch, stitch length 3.
2. Place the covered welt cord on the right side of the fabric along the seam line. Place it under the Single Welt Cord Foot with the welt cord in the groove of the foot. Stitch the welt cord to the fabric. Clip the seam allowance of the welt cord at curves and corners.
3. Place the second piece of fabric right sides together with the first. The welt cord will be between the two layers. Place the welt cord in the groove and stitch with the first stitching line up. Touch the width to adjust the needle position slightly to the right to cover the first stitching.

See a detailed clip on how to sew with the Single Welt Cord Foot and several other accessories on husqvarnaviking.com.

